

V 68949

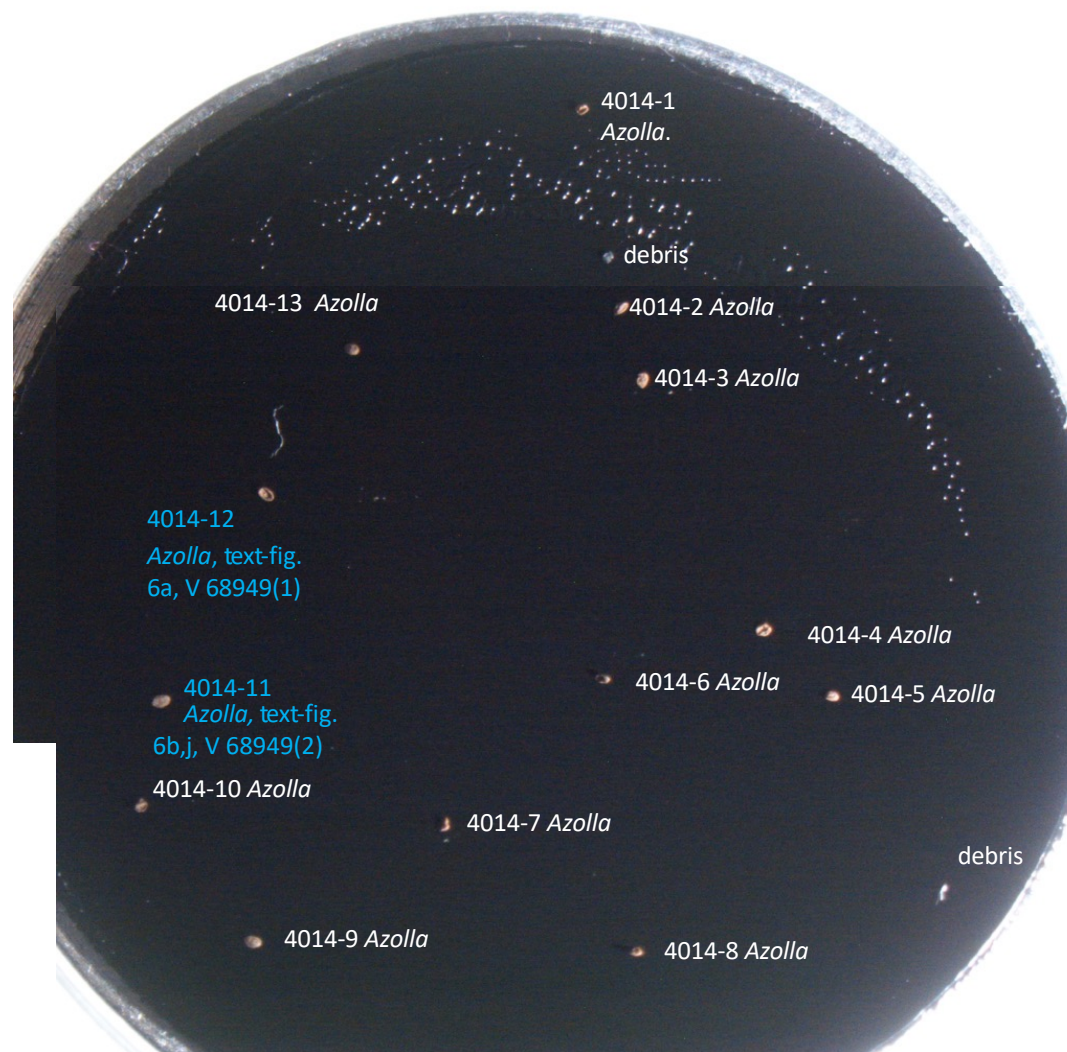
SEM Stub 4014

Mesofossils from TB33 Unit 2.
Mesofossil fraction resieved
through 125 microns and the
material passing through that
sieve was then sieved again
through 15 microns. Material
retained on 15 microns was
picked.

Mount - Carbon pad.

[Blue text specimens
illustrated in text figures]

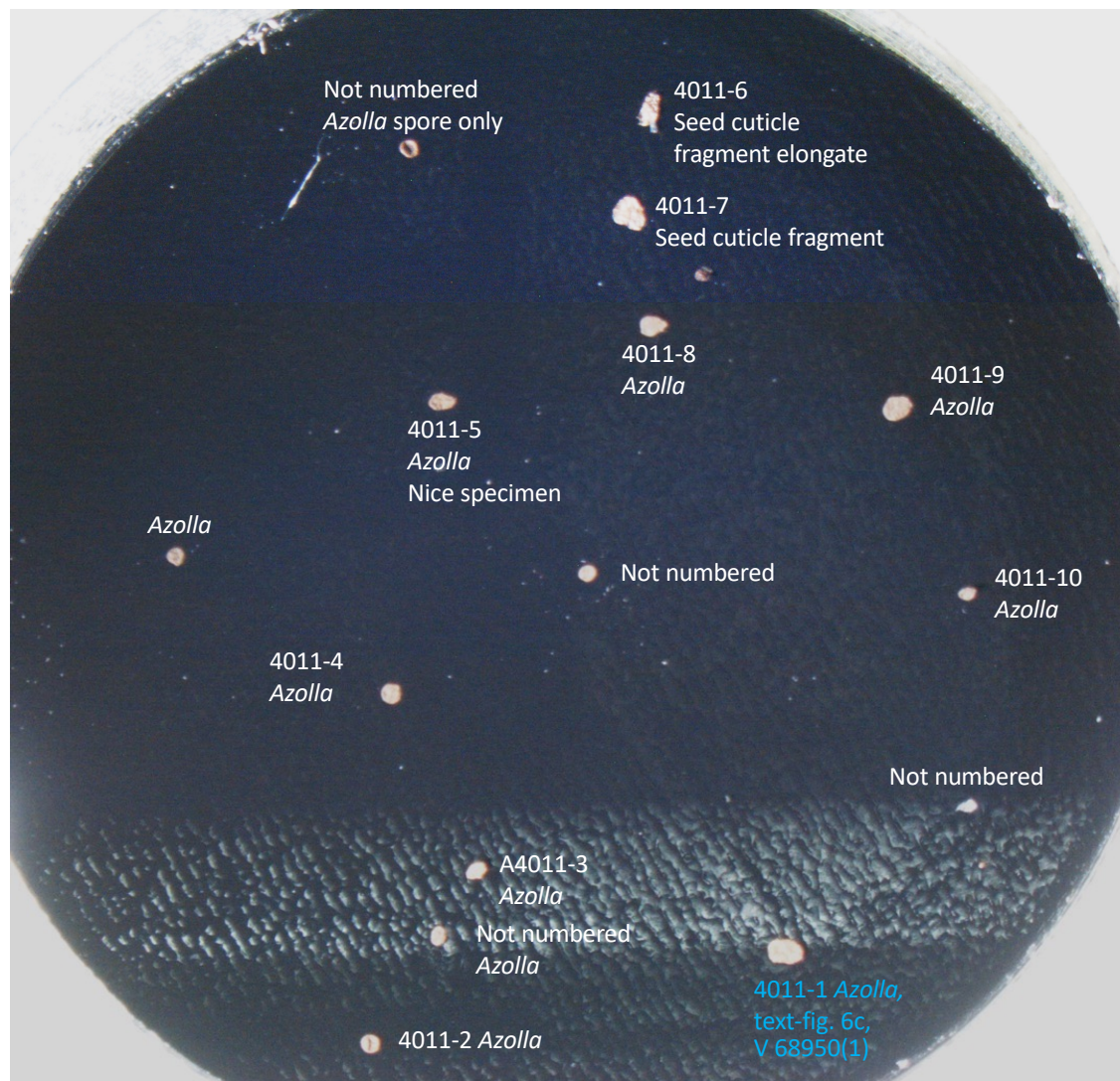
Unfigured specimens are
interpreted as *Azolla* based on
presence of filosum. Some are
broken, some probably
immature, some are distorted
through compression.



V 68950

SEM Stub 4011
Mesofossils from TB33 unit 2
Mount - Carbon pad

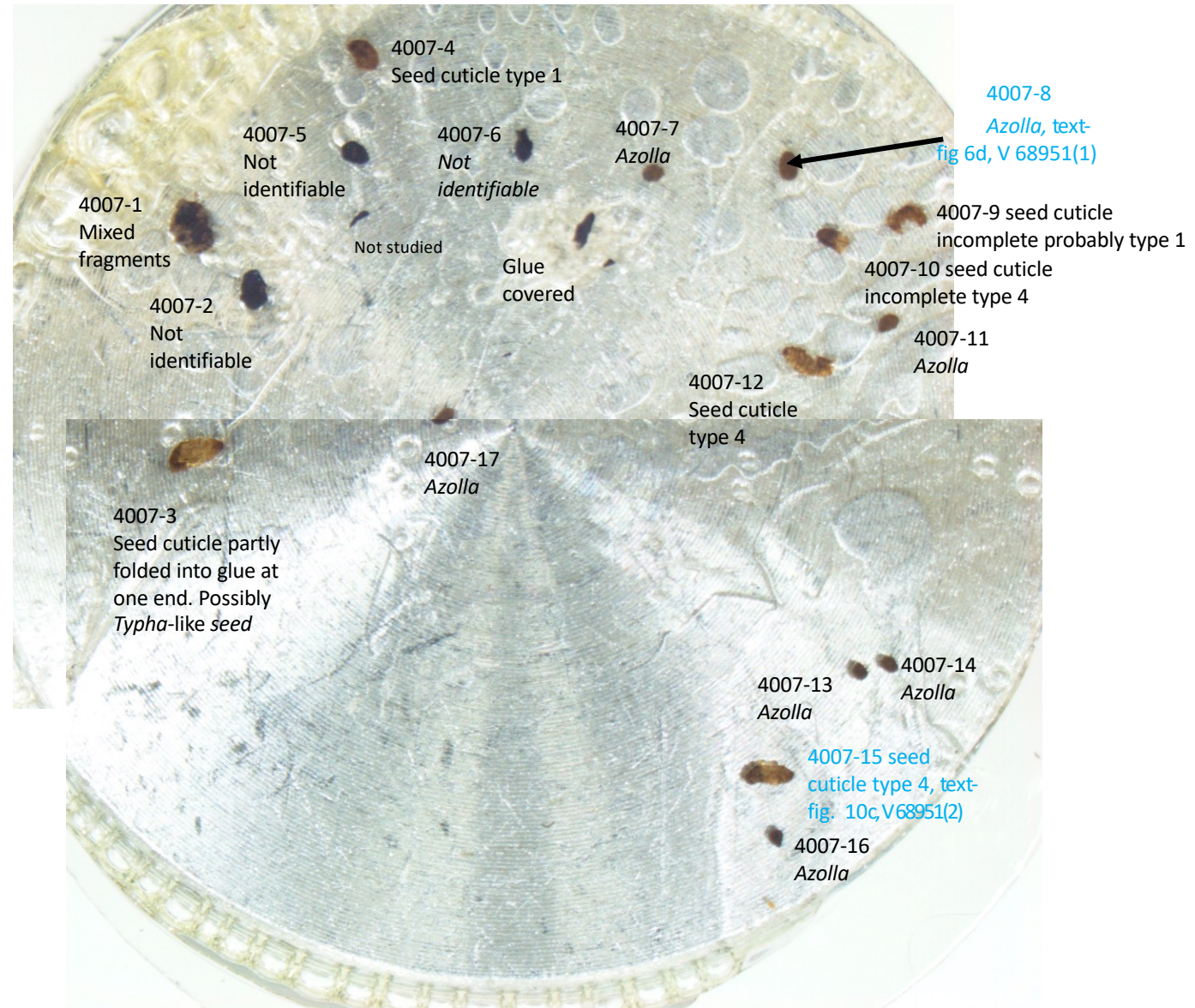
[Blue text specimens
illustrated in text figures]



V 68951

SEM Stub 4007 Mesofossils
from TB33 unit 2 Mount -
Bostik, coverglass, bostik

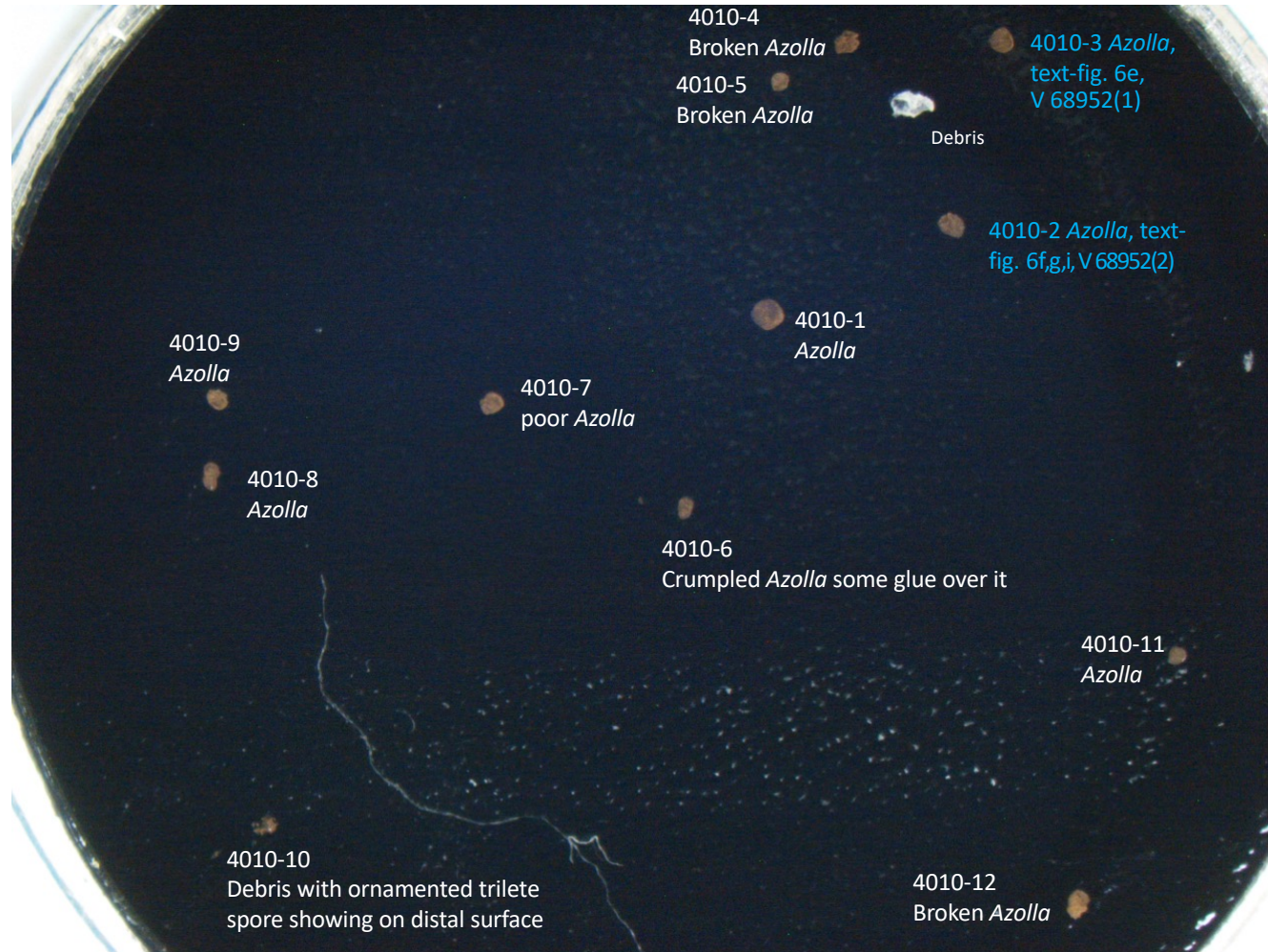
[Blue text specimens
illustrated in text figures]



V 68952

SEM Stub 4010
Mesofossils from
TB33 unit 2 Mount -
Carbon pad

[Blue text specimens
illustrated in text figures]



V 68953

Stub 4006

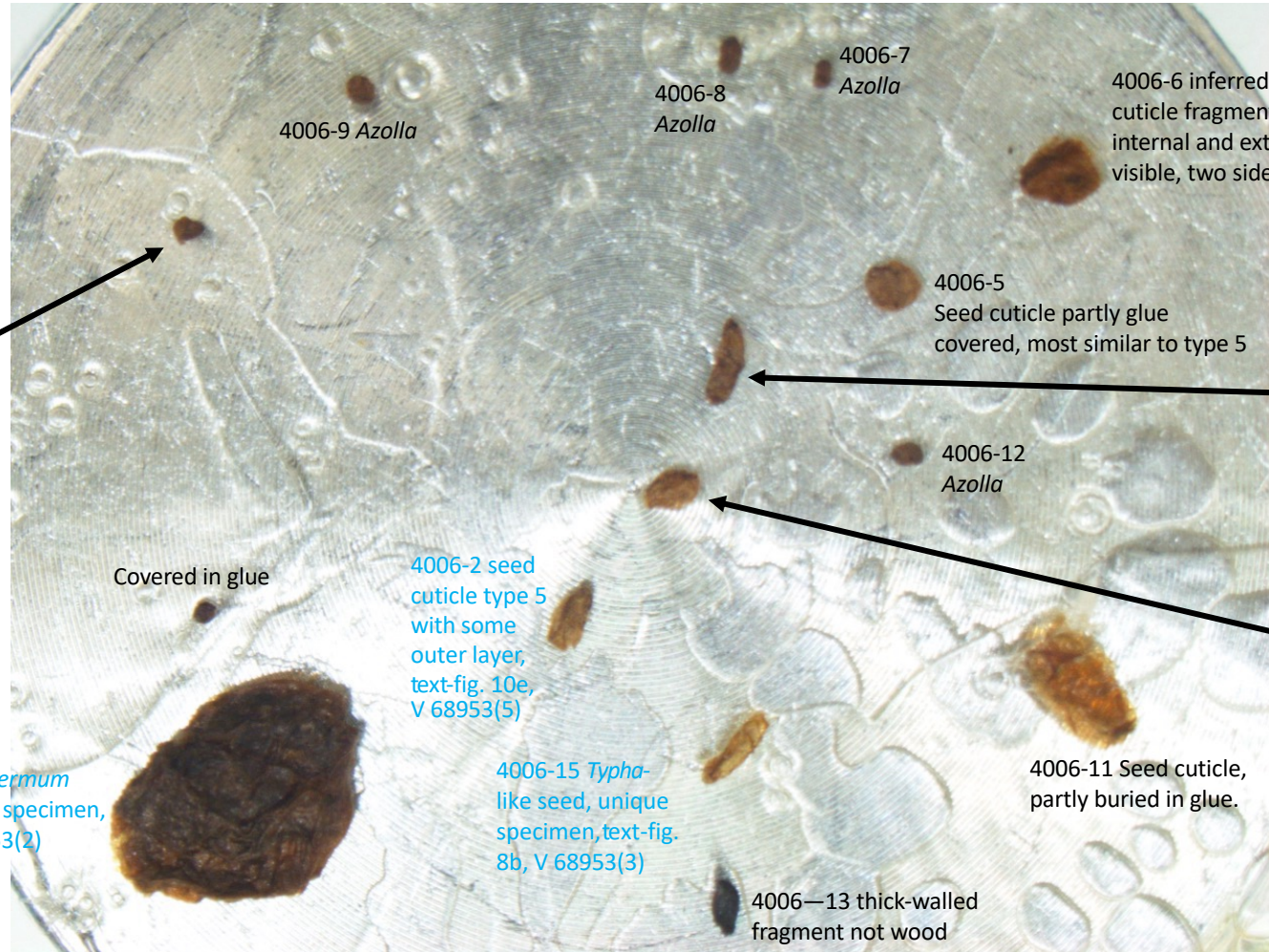
Mesofossils from
TB33 unit 2

Mount - Bostik,
coverglass, bostik

[Blue text specimens
illustrated in text figures]

4006-10, *Azolla*
megaspore with
microspore massula
attached, unique
example, text-fig. 6h,k,l,
V 68953(1)

4006-1 *Rhamnospermum*
bilobatum, unique specimen,
text-fig. 8a, V 68953(2)



4006-6 inferred seed
cuticle fragment
internal and external
visible, two sides visible

4006-5
Seed cuticle partly glue
covered, most similar to type 5

4006-4
seed cuticle
type 4,
text-fig. 10d,
V 68953(4)

4006-12
Azolla

4006-3
seed cuticle
type 5 with
some outer
layer,
text-fig. 10f,
V 68953(6)

Covered in glue

4006-2 seed
cuticle type 5
with some
outer layer,
text-fig. 10e,
V 68953(5)

4006-15 *Typha*-
like seed, unique
specimen, text-fig.
8b, V 68953(3)

4006-11 Seed cuticle,
partly buried in glue.

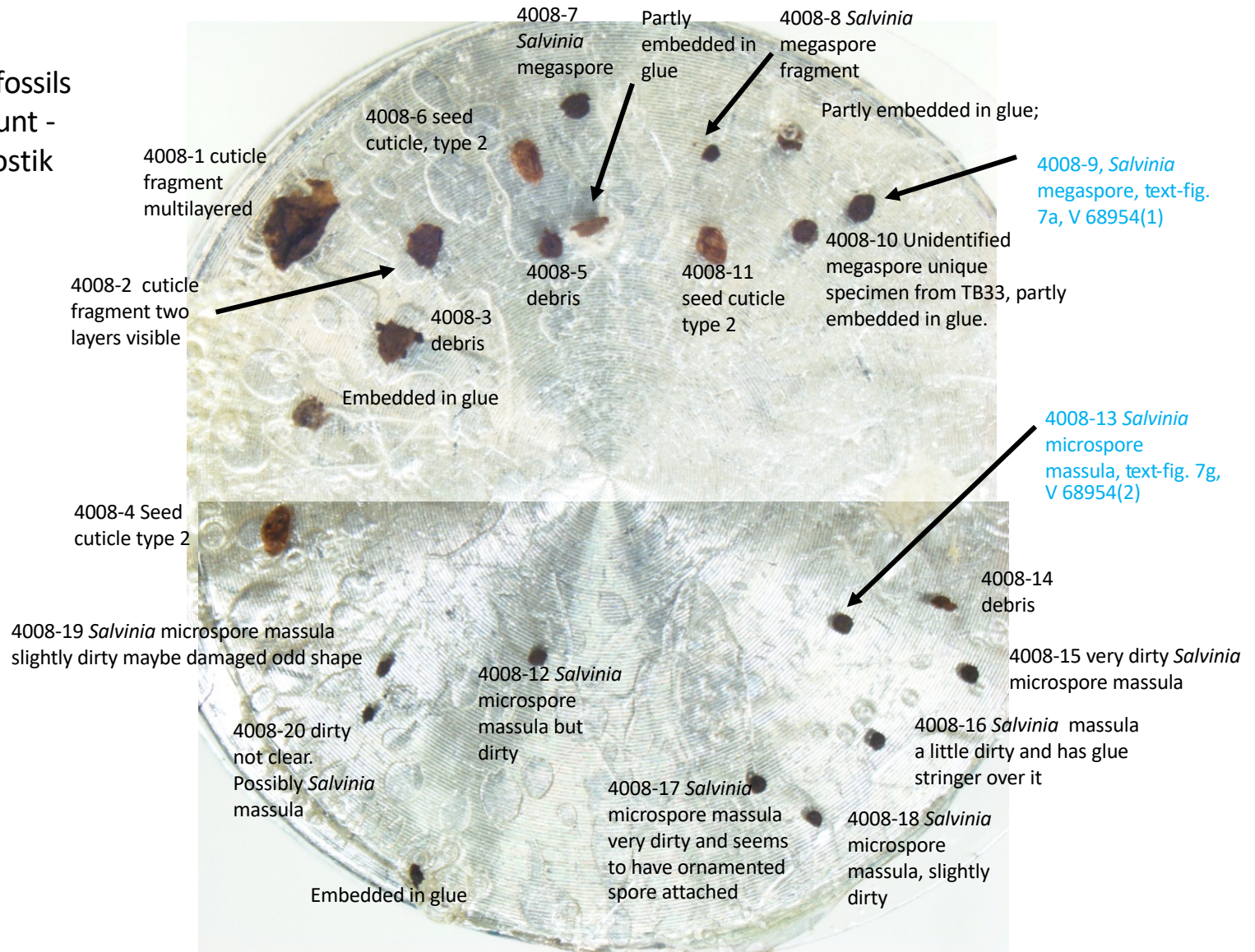
4006-13 thick-walled
fragment not wood

4006-14 Just off this stub photo *Azolla* broken at spore end

V 68954

SEM Stub 4008 Mesofossils
from TB33 Unit 3 Mount -
Bostick, coverglass, bostik

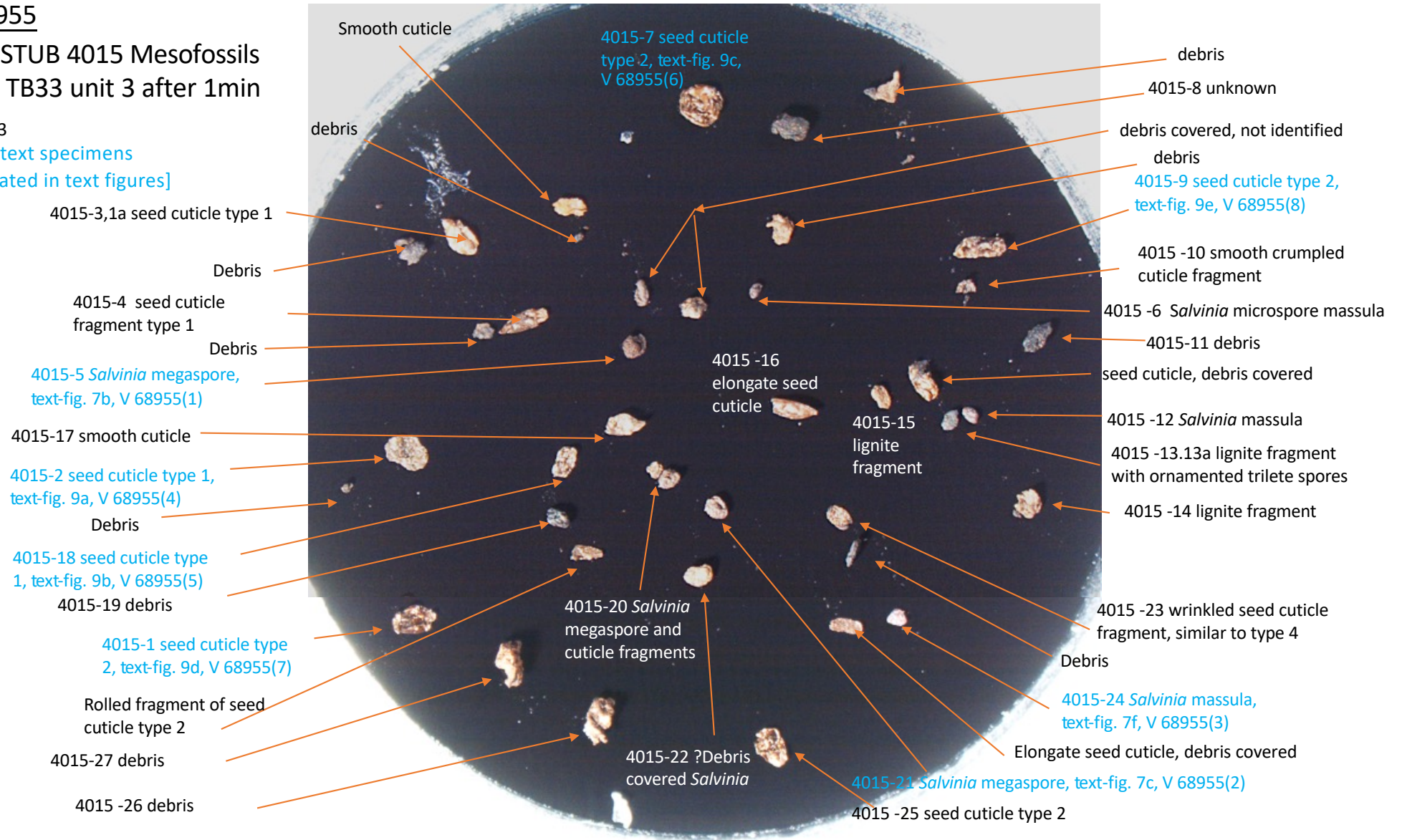
[Blue text specimens
illustrated in text figures]



V 68955

SEM STUB 4015 Mesofossils
from TB33 unit 3 after 1min
HNO₃

[Blue text specimens
illustrated in text figures]



V 68956

SEM STUB 4016

Mesofossils from TB33 Unit 3
(after 1 min HNO₃)

specimens in central area next page

[Blue text specimens

illustrated in text figures]

4016-21 seed cuticle
type 3, text-fig. 10b,
V 68956(6)

4016-22 *Salvinia* microspore massula

4016-23 *Salvinia* microspore massula

4016-24 debris

4016-25 *Salvinia* microspore
massula, text-fig. 7h, V 68956(3)

Debris

4016-26 *Salvinia* microspore massula

4016-27 *Salvinia* microspore
massula and seed cuticle type 3

Debris

4016-28 *Salvinia*
microspore massula,
text-fig. 7i, V 68956(4)

crumpled cuticle

4016-11 seed cuticle type 3

4016-12 *Salvinia*
microspore massula

4016-10 possible *Salvinia*
microspore massula, debris covered

unidentified

4016-9 seed cuticle type 3,
text-fig. 10a, V 68956(5)

crumpled cuticle

smooth cuticle fragment

4016-8 wrinkled smooth cuticle

4016-7 *Salvinia* microspore
massula, text-fig 7e, V 68956(2)

4016-5 *Salvinia* microspore massula

4016-6 crumpled seed cuticle some similarity
to type 3

4016-16 *Salvinia* fragment distal view megaspore

4016-17 *Salvinia* microspore massula

4016-4 *Salvinia*
microspore massula

4016-3 possible *Salvinia* massula

4016-2 unidentified

4016-1 curled seed cuticle type 1

Debris

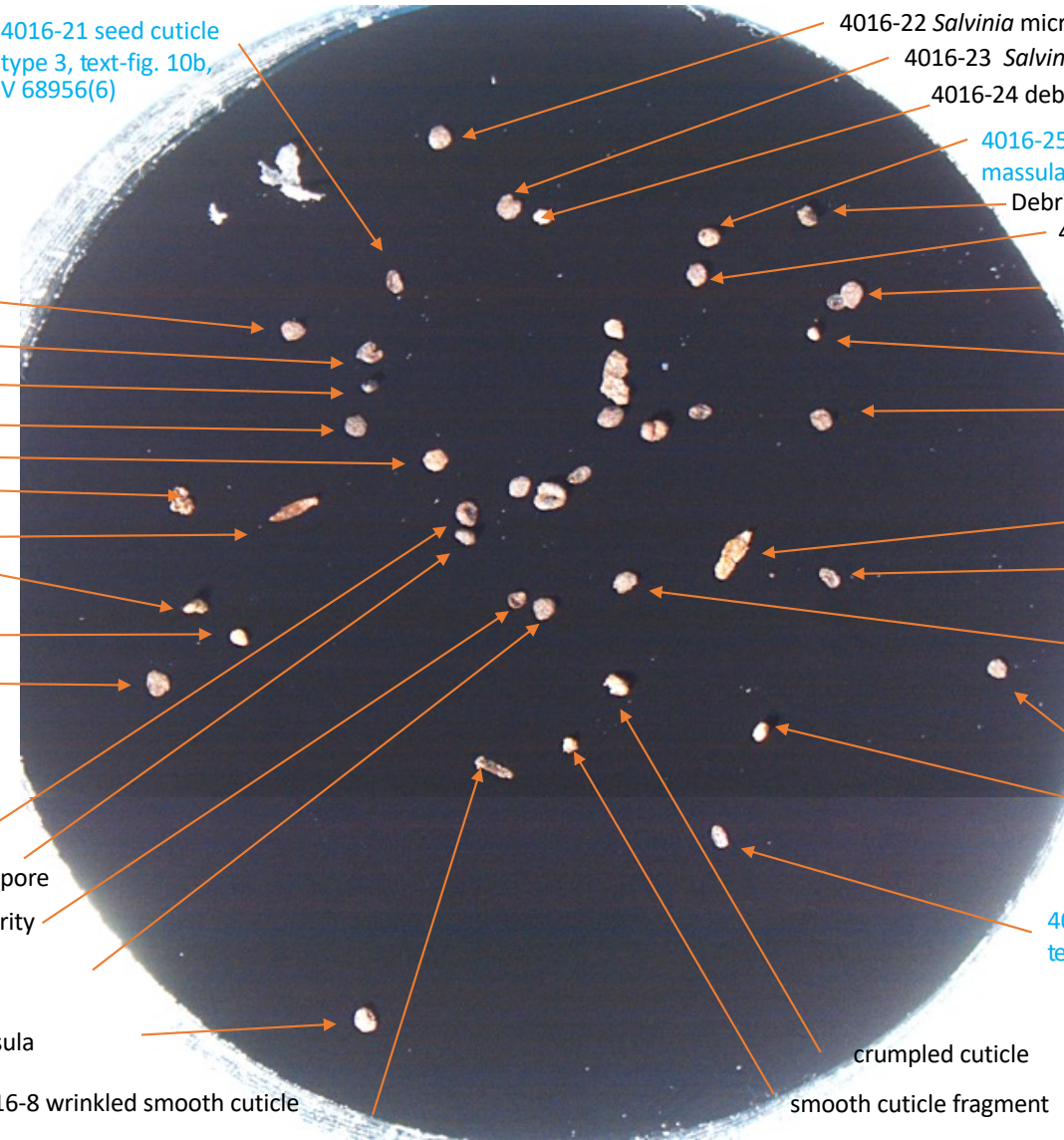
crumpled cuticle

4016-18 *Salvinia* massula

Salvinia microspore massula fragment

4016-19 seed cuticle type 3 split open

4016-20 *Salvinia* microspore massula



V 68956

SEM STUB 4016

Mesofossils from

TB33 unit 3 (after 1 min HNO₃)

Detail of central part of stub

[Blue text specimens
illustrated in text figures]

