



JAPANESE STENCILS
IN THE NÁPRSTEK MUSEUM COLLECTION

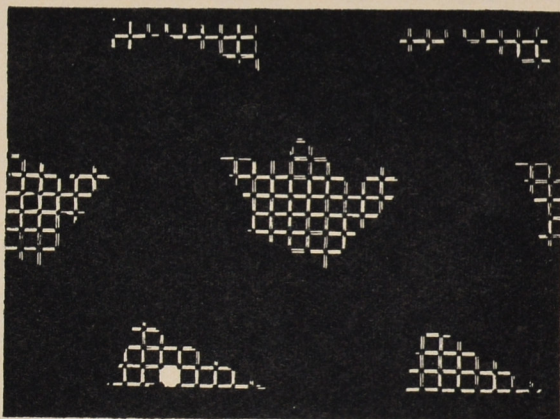
LIBUŠE BOHÁČKOVÁ

Part III. Chūgata Patterns of *jizomari* Type (I)*

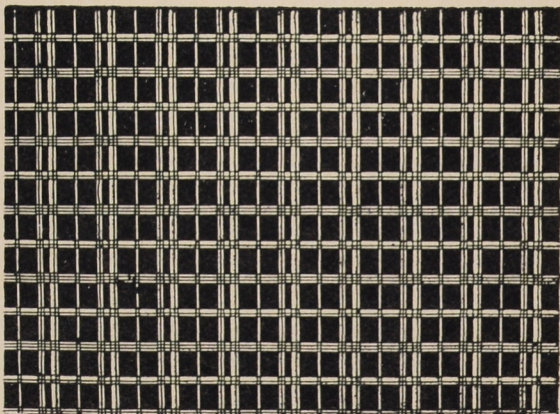
1. Geometric Patterns

a) of linear character

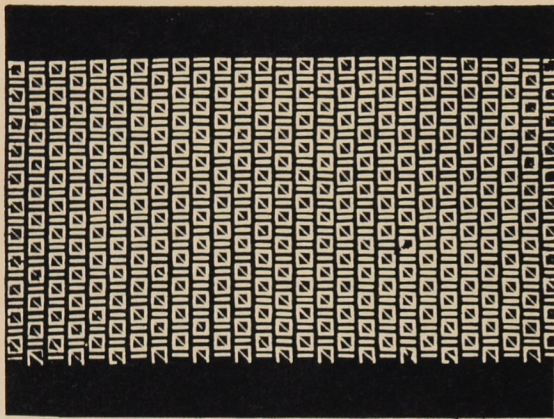
- 295 Type: *jizomari*
Fragmentary lattice
Technique: *ichimaizuki*
31 X 40,5 cm (22,2 cm)
Character "ryo"
Inv. No. A 10.350



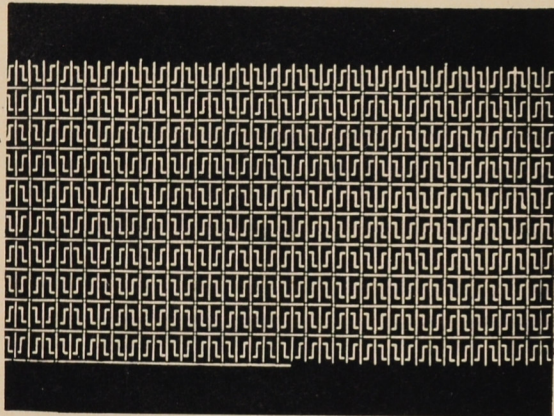
- 296 Type: *jizomari*
Chequer
Technique: *tsukibori, kiribori*
30,6 X 40,6 cm (21,8 cm)
Inv. No. A 10.082



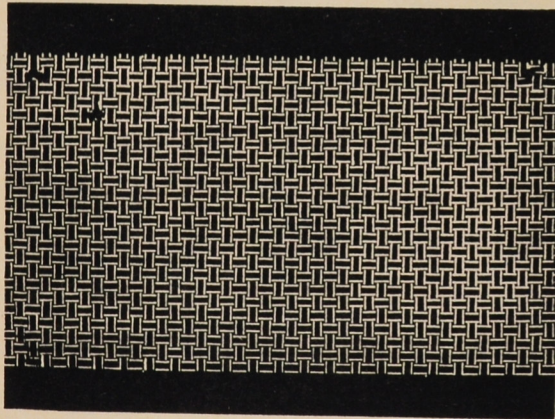
* For the introductory essay, bibliography and the first part of the catalogue (*komon* patterns) see Annals of the Náprstek Museum XI/1983, pp. 9—75, for the second part (*jishiro* type) and index of Japanese terms see Annals of the Náprstek Museum XII/1984, pp. 9—69.



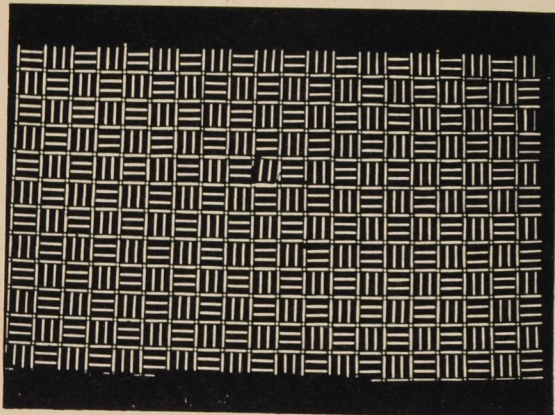
297 Type: *jizomari*
 Crossed *masugata* (*masu*: box-shaped
 measure) pattern
 Technique: *tsukibori*
 32,2 × 42,4 cm (18,7 cm)
 Inv. No. A 10.427



298 Type: *jizomari*
 Lattice combined with alternately
 arranged "hooks"
 Technique: *tsukibori*, *ichimaizuki*,
kiribori
 29,8 × 41,7 cm (18,3 cm)
 Inv. No. A 10.361

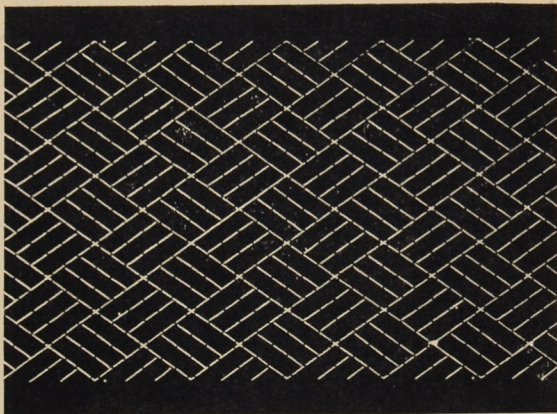


299 Type: *jizomari*
ajiro pattern
 Technique: *ichimaizuki*
 29,9 × 42 cm (19,1 cm)
 Inv. No. A 10.360

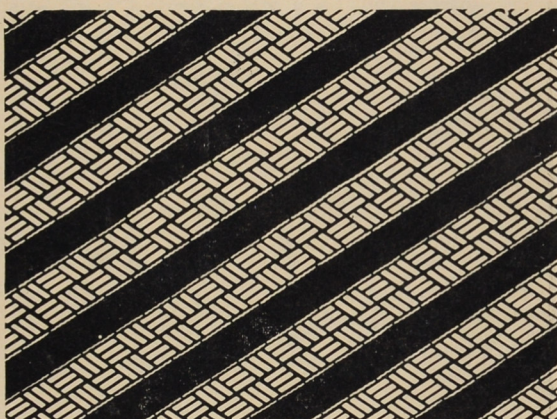


300 Type: *jizomari*
ajiro pattern
 Technique: *ichimaizuki*, *kiribori*
 29,7 × 39,7 cm (19,9 cm)
 Inv. No. A 10.368

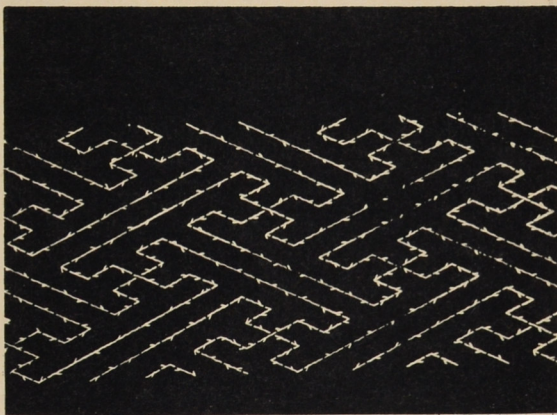
- 301 Type: *jizomari*
ajiro pattern in oblique orientation
 Technique: *ichimaizuki*, *dōgubori*
 40,1 × 29,4 cm [20,3 cm]
 Inv. No. A 3.694



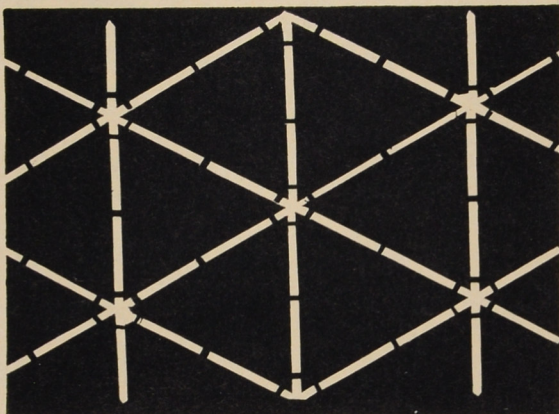
- 302 Type: *jizomari*
 Stripes of *ajiro* pattern
 Technique: *tsukibori*, *ichimaizuki*
 27,4 × 41,3 cm [18,7 cm]
 Inv. No. A 10.276

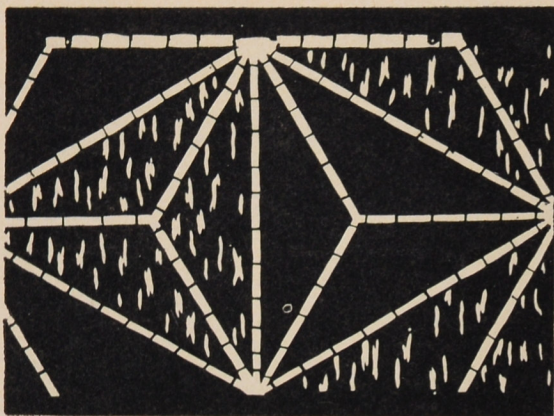


- 303 Type: *jizomari*
 Key fret composed of twigs
 Technique: *tsukibori*, *dōgubori*
 41 × 24,4 cm [14,5 cm]
 Inv. No. A 3.687

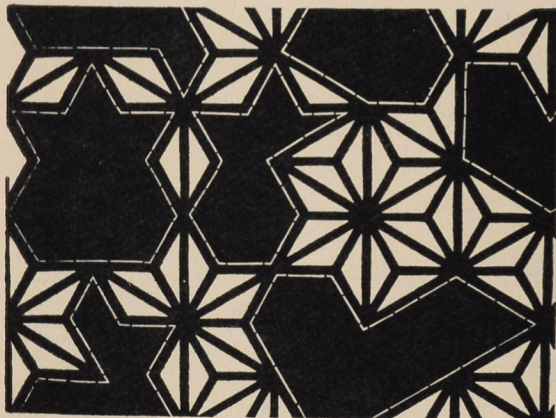


- 304 Type: *jizomari*
 Lozenge diaper crossed by vertical lines
 Technique: *tsukibori*
 28,9 × 42 cm [18,8 cm]
 Inv. No. A 10.420

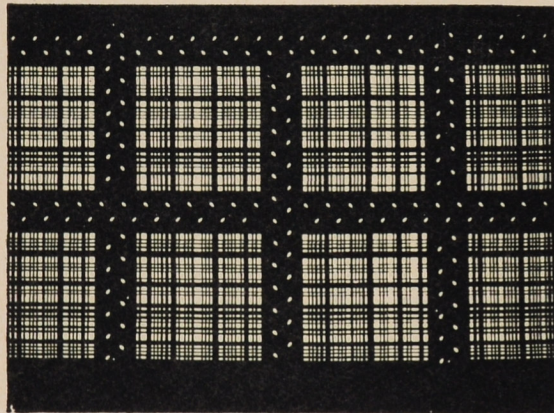




305 Type: *jizomari*
asanoha pattern
 Technique: *tsukibori*, *ichimaizuki*
 31,2 × 42,3 cm (19,5 cm)
 Inv. No. A 10.627



306 Type: *jizomari*
 Fragmentary *asanoha* pattern
 Technique: *tsukibori*
 32 × 42,3 cm (20,7 cm)
 Inv. No. A 10.421

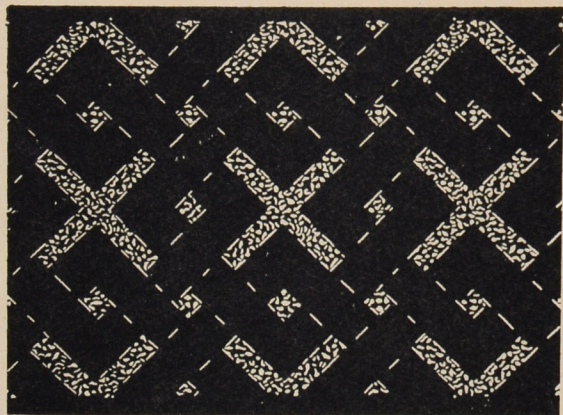


307 Type: *jizomari*
 Large lattice with rice grains enclosing
 fine chequer
 Technique: *ichimaizuki*, *dōgubori*
 31,3 × 39,3 cm (19,9 cm)
 Inv. No. A 10.346



308 Type: *jizomari*
 Stripes of patterns composed of small
 lozenges, crosses etc.
 Technique: *ichimaizuki*, *dōgubori*
 25,8 × 41,6 cm (14,2 cm)
 Inv. No. A 10.274

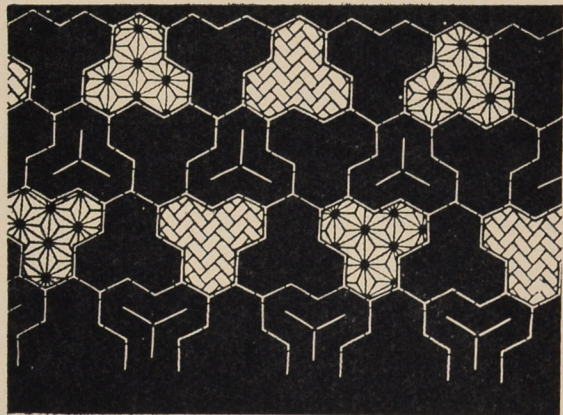
- 309 Type: *jizomari*
 Crosses
 Technique: *ichimaizuki, tsukibori*
 41,5 × 33 cm (22,5 cm)
 Inv. No. A 3.695



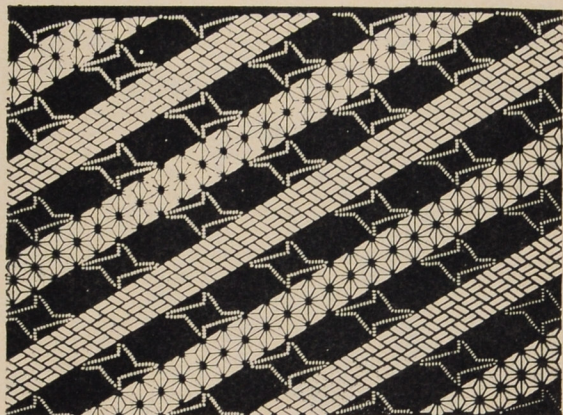
- 310 Type: *jizomari*
 Squares, *asanoha* and *ajiro* patterns,
 floral motifs
 Technique: *ichimaizuki, kiribori, dōgubori*
 30,5 × 40,9 cm (21,9 cm)
 Inv. No. A 10.089

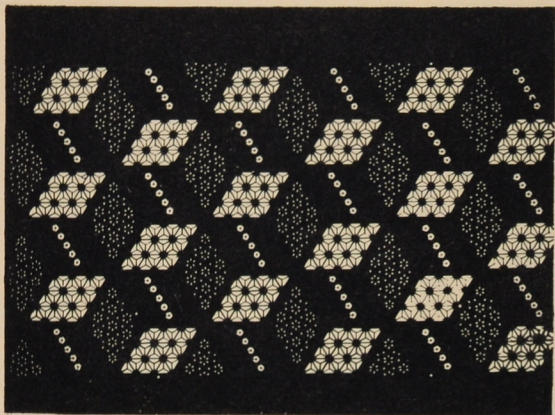


- 311 Type: *jizomari*
Bishamon-kikkō, higaki and *asanoha*
 patterns
 Technique: *tsukibori*
 31,7 × 41,6 cm (19,3 cm)
 Inv. No. A 10.630

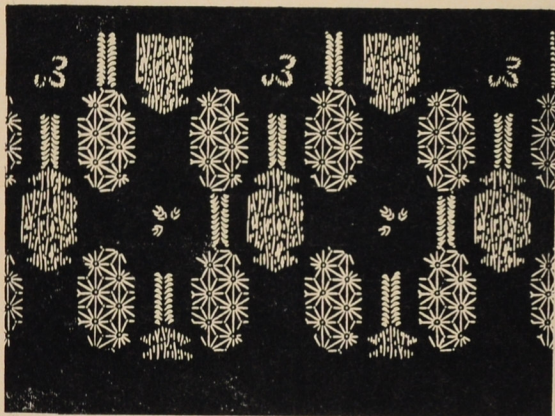


- 312 Type: *jizomari*
asanoha and *ajiro* stripes in positive
 and "stars" in negative
 Technique: *ichimaizuki, dōgubori*
 29,3 × 40,6 cm (20,3 cm)
 Inv. No. A 10.479

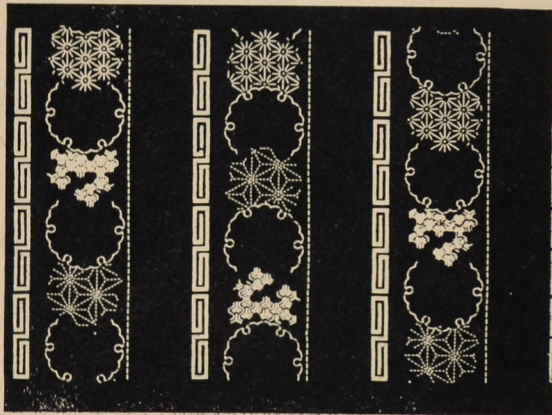




313 Type: *jizomari*
asanoha and floral lozenges
 Technique: *ichimaizuki*, *dōgubori*, *kiribori*
 28,6 × 40,3 cm (18,9 cm)
 Inv. No. A 10.366



314 Type: *jizomari*
asanoha, *matsukawabishi*, lines
 composed of leaves
 Technique: *ichimaizuki*, *dōgubori*,
tsukibori
 29,7 × 41,8 cm (18,8 cm)
 Inv. No. A 10.362



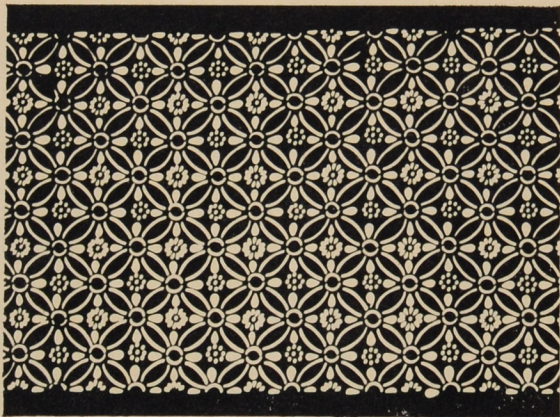
315 Type: *jizomari*
 Snow crystals with *asanoha*,
Bishamon-kikkō, stripes of *raimon*
 pattern
 Technique: *tsukibori*, *ichimaizuki*,
dōgubori
 32,3 × 41,3 cm (21 cm)
 Inv. No. A 10.473



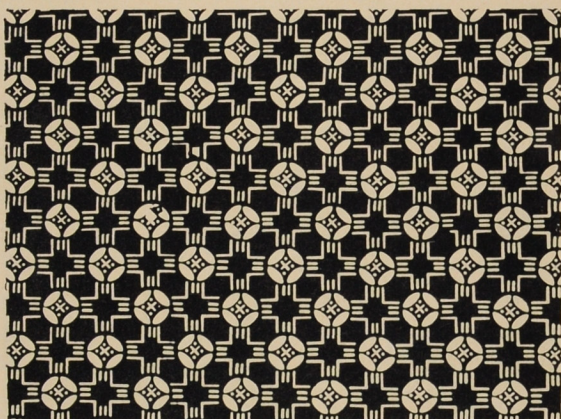
316 Type: *jizomari*
asanoha, *ajiro* patterns, blooming plum
 Technique: *tsukibori*
 31,1 × 41 cm (21 cm)
 Inv. No. A 10.500

b) patterns of curvilinear character

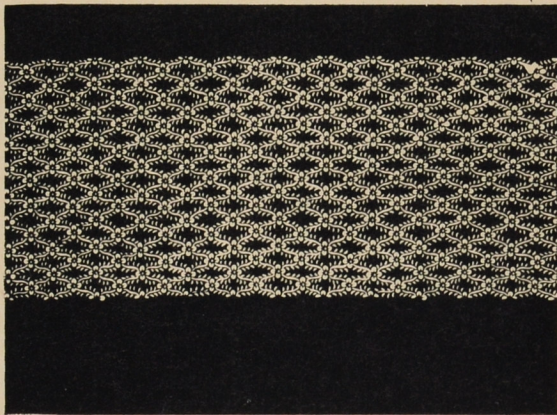
- 317 Type: *jizomari*
shippō and conventionalized flower,
of two types
Technique: *tsukibori*, *ichimaizuki*,
ichimaiwa, *dōgubori*, *kiribori*
24,6 × 40,4 cm (13,4 cm)
Inv. No. A 10.256



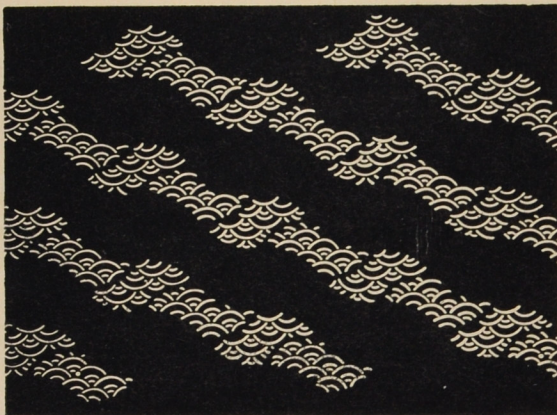
- 318 Type: *jizomari*
Diaper of small crosses and
shippō pattern
Technique: *ichimaizuki*, *kiribori*, *tsukibori*
24 × 40,5 cm (14,2 cm)
Inv. No. A 10.173

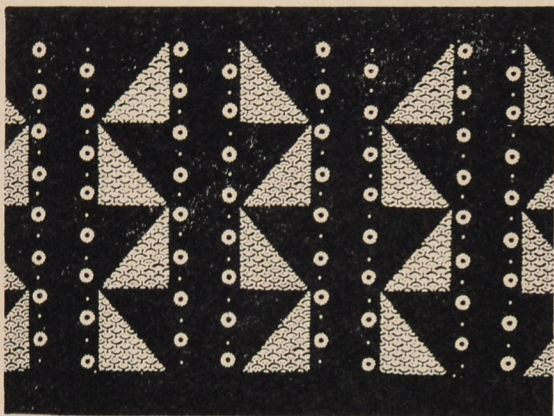


- 319 Type: *jizomari*
tatewaku lattice composed of leaves
and flowers
Technique: *tsukibori*, *dōgubori*, *kiribori*
24,3 × 39,3 cm (13,8 cm)
Inv. No. A 10.172

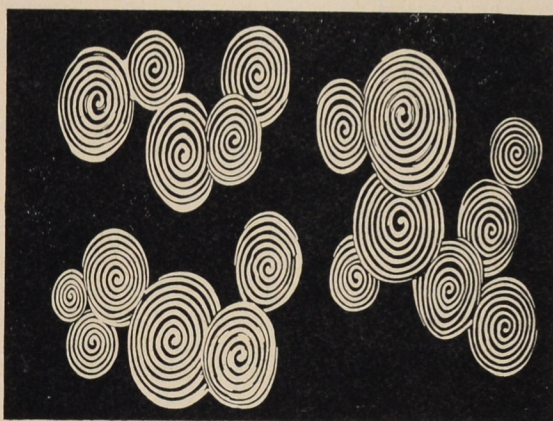


- 320 Type: *jizomari*
seigaiha pattern in *tatewaku* frame
Technique: *ichimaiwa*, *tsukibori*
41,4 × 25,1 cm (13,8 cm)
Inv. No. A 3.6.96

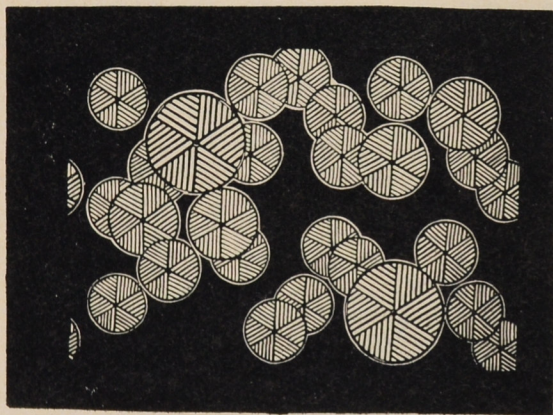




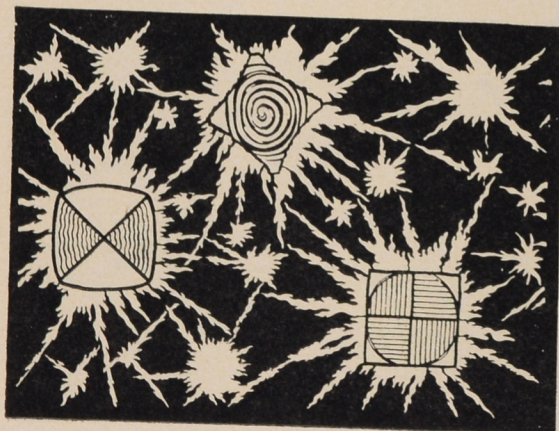
321 Type: *jizomari*
seigaiha pattern and
 chrysanthemum flowers
 Technique: *dōgubori*, *kiribori*, *ichimaiwa*
 28,5 × 40,3 cm [20,2 cm]
 Inv. No. A 10.367



322 Type: *jizomari*
 Whirlpool
 Technique: *tsukibori*, *itoire*
 40,3 × 57,9 cm [32,2 cm]
 Inv. No. A 10.748



323 Type: *jizomari*
 Balls (rotating *ajiro* pattern)
 Technique: *tsukibori*, *ichimaizuki*, *itoire*
 41,5 × 58,2 cm [32,6 cm]
 Inv. No. A 10.649



324a Type: *jizomari*
 Irregular stars enclosing geometrical
 motifs
 Technique: *tsukibori*, *itoire*
 40,3 × 57,6 cm [33 cm]
 Inv. No. A 10.762

324b Type: *jizomari*
 The same design as 324a and 324c
 40,3 × 58,2 cm [32,7 cm]
 Inv. No. A 10.656

324c Type: *jizomari*
 The same design as 324a and 324b
 41,1 × 59,5 cm [33,3 cm]
 Inv. No. 3.904

c) chequer, zigzag patterns
combined with flower- and
other motifs

325 Type: *jizomari*

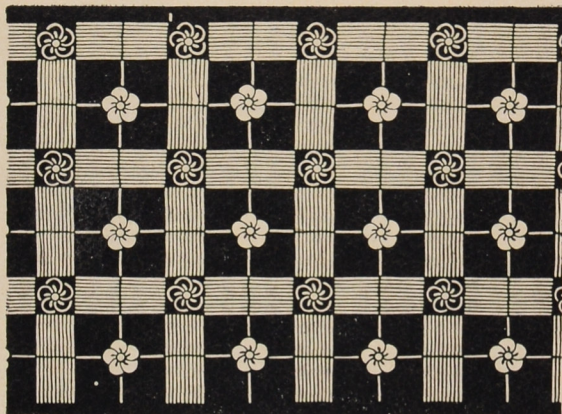
Double lattice with flowers at crossings

(*hana-iri okina kōshi*)

Technique: *ichimaizuki, ichimaiwa,*
tsukibori

24,6 × 41 cm (15 cm)

Inv. No. A 10.201



326 Type: *jizomari*

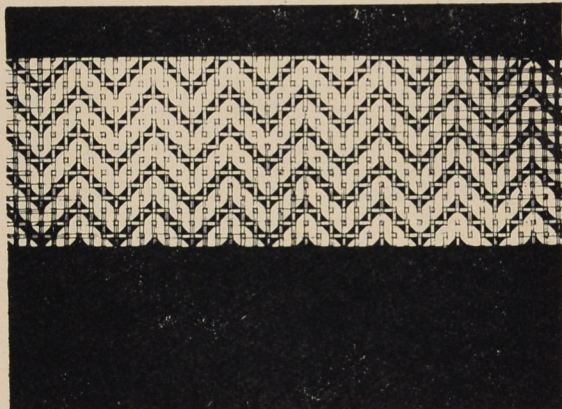
zigzag pattern against fine square lattice

(*sansuji kōshi ni yamamichi*)

Technique: *ichimaizuki, tsukibori, kiribori*

24,9 × 41,2 cm (11,4 cm)

Inv. No. A 10.297



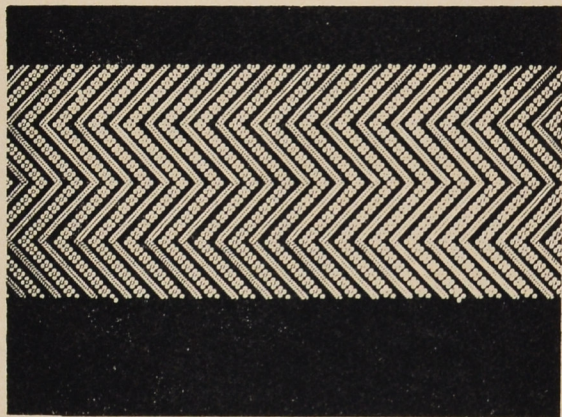
327 Type: *jizomari*

Zigzag lines composed of leaves
and flowers

Technique: *dōgubori, kiribori*

26 × 41,5 cm (13,7 cm)

Inv. No. A 10.458



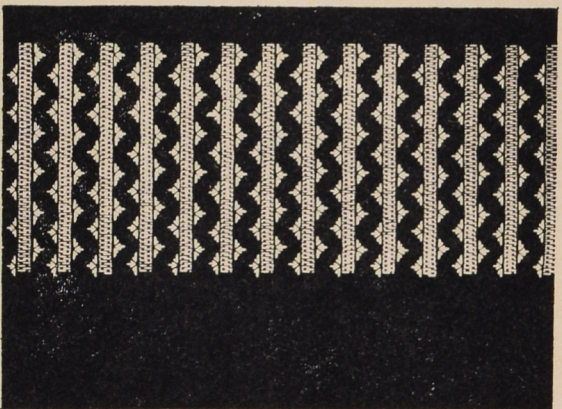
328 Type: *jizomari*

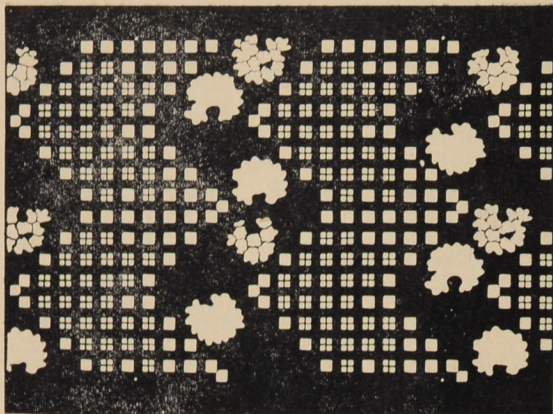
Stripes of chains and conventionalized
flowers in zigzag arrangement

Technique: *kiribori, ichimaizuki, tsukibori*

24,5 × 41,2 cm (13,8 cm)

Inv. No. A 10.299



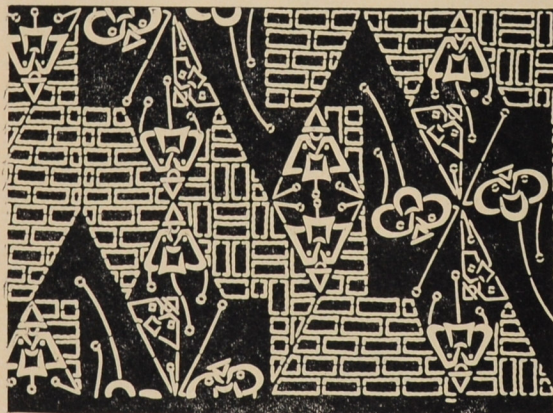


- 329 Type: *jizomari*
 Zigzag stripes composed of small squares
 Technique: *ichimaizuki, tsukibori*
 33,5 × 43,2 cm (21 cm)
 Inv. No. A 10.309

d) Regular geometric patterns combined with flower and other motifs



- 330 Type: *jizomari*
ajiro stripes and chrysanthemum medallions
 Technique: *ichimaizuki, tsukibori, kiribori*
 31,9 × 40,3 cm (21,1 cm)
 Inv. No. A 10.442

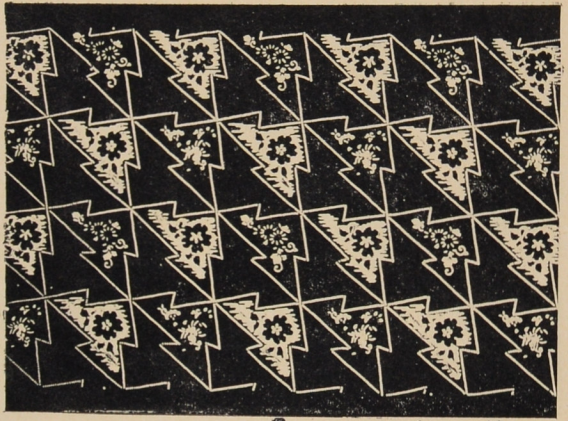


- 331 Type: *jizomari*
ajiro, ichinomoyō patterns and Yajirōbei doll in double conventionalization
 Technique: *tsukibori, dōgubori*
 25,3 × 41,4 cm (14,6 cm)
 Inv. No. A 10.245

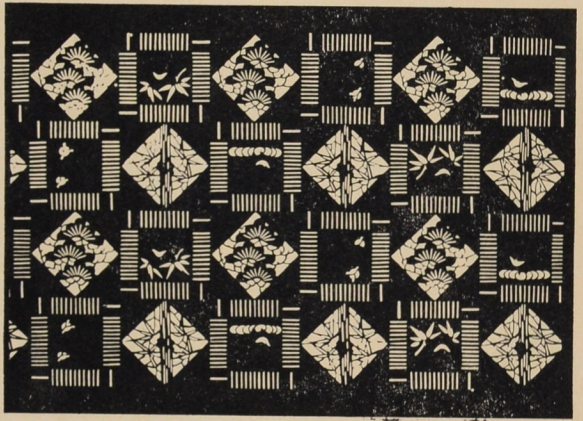


- 332 Type: *jizomari*
 Lozenge diaper, pine and maple leaves in water (*Tatsutagawa* motif)
 Technique: *tsukibori*
 30,1 × 41,3 cm (20 cm)
 Inv. No. A 10.483

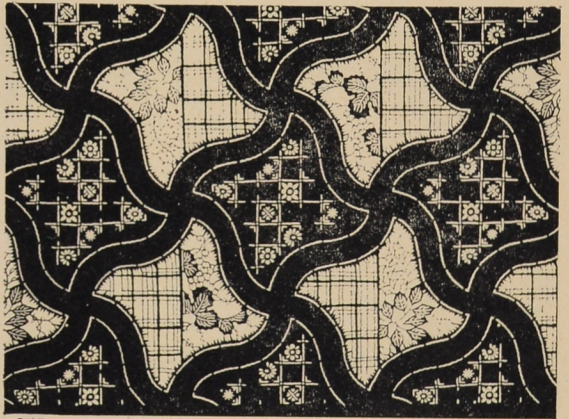
- 333 Type: *jizomari*
 Zigzag lattice enclosing *sakura*
 blossoms in positive, *hōō* birds and
 chrysanthemum in negative;
kasuri effect
 Technique: *dōgubori*, *tsukibori*
 32,3 × 41,8 cm (22,2 cm)
 Inv. No. A 10.430



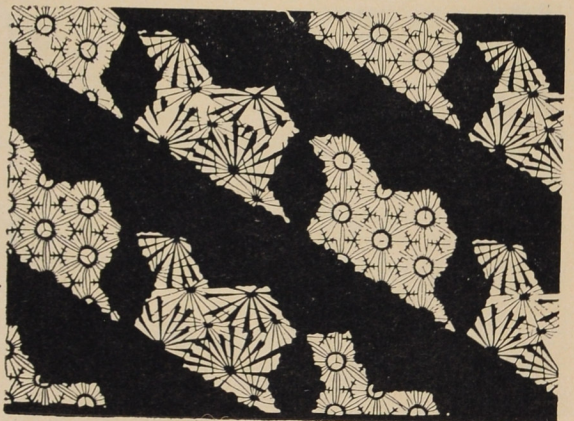
- 334 Type: *jizomari*
 Square lattice enclosing bamboo and
 pine in positive, bamboo, plum buds,
 bat (?) and clouds
 Technique: *ichimaizuki*, *tsukibori*
 29,6 × 40,7 cm (20,2 cm)
 Inv. No. A 10.638

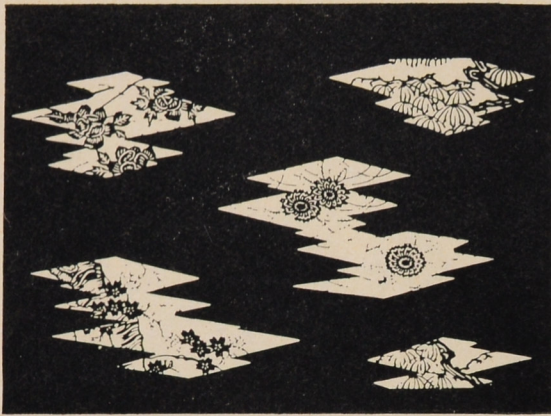


- 335 Type: *jizomari*
 Wavy lozenge diaper enclosing vine
 and wistaria scrolls, lattice enclosing
 conventionalized flowers
 Technique: *tsukibori*, *kiribori*, *dōgubori*
 30,7 × 41,5 cm (20,6 cm)
 Inv. No. A 10.600



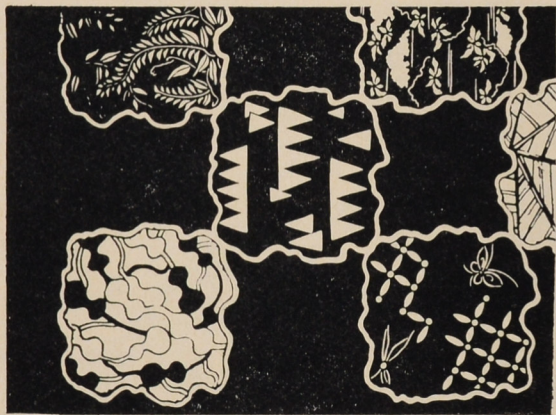
- 336 Type: *jizomari*
 Pine, *kikkō* pattern, chrysanthemum
 flower
 Technique: *tsukibori*
 30,6 × 41 cm (20,7 cm)
 Inv. No. A 10.599



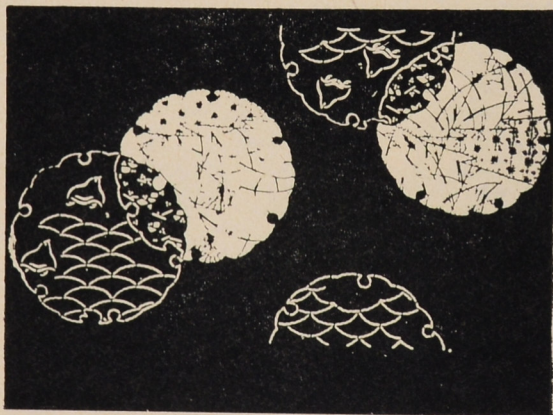


e) Natural motifs
in geometric medallions

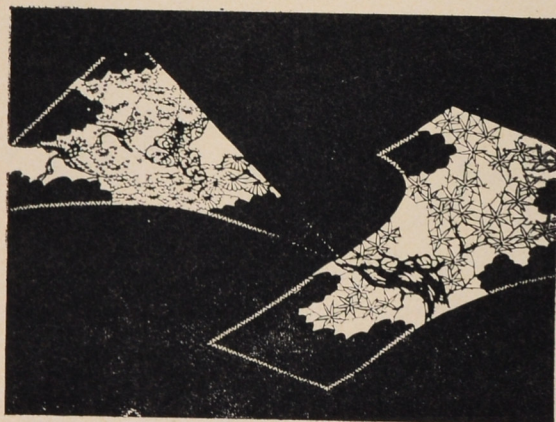
- 337 Type: *jizomari*
Chrysanthemum, pine, peony, *sakura*
enclosed in *matsukawabishi* medallions
Technique: *tsukibori*; *itoire*
30,3 × 40 cm (20,3 cm)
Inv. No. A 10.443



- 338 Type: *jizomari*
Gourd, wistaria, *shippō*, butterflies,
cobweb etc. in irregular squares
Technique: *tsukibori*; *itoire*
41,6 × 60,6 cm (33,2 cm)
Inv. No. 3.905



- 339 Type: *jizomari*
susuki grass, *asanoha* pattern, plovers
and waves in snow-crystal medallions
Technique: *tsukibori*
31,8 × 42 cm (18,8 cm)
Inv. No. A 10.338



- 340 Type: *jizomari*
Maple, pine and cranes in irregular
medallions; *kasuri* effect
Technique: *tsukibori*, *dōgubori*
30,5 × 40 cm (18 cm)
Inv. No. A 10.539

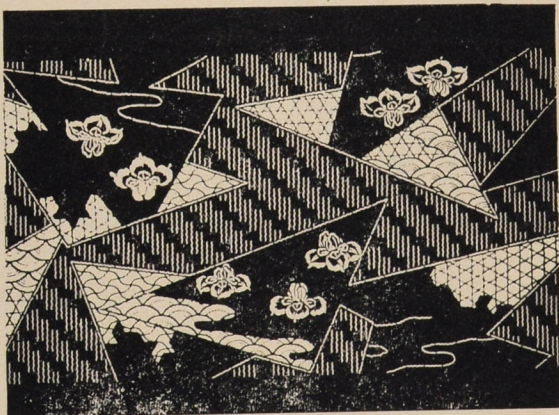
- 341 Type: *jizomari*
seigaiha pattern enclosing
 chrysanthemum flowers and butterflies
 Technique: *tsukibori*, *dōgubori*
 31 × 40,5 cm (21,7 cm)
 Inv. No. A 10.484



- 342 Type: *jizomari*
ajiro, *higaki*, *asanoha* patterns, bamboo
 fence and peonies
 Technique: *tsukibori*, *ichimaizuki*, *kiribori*
 30 × 41,6 cm (18,2 cm)
 Inv. No. A 10.463

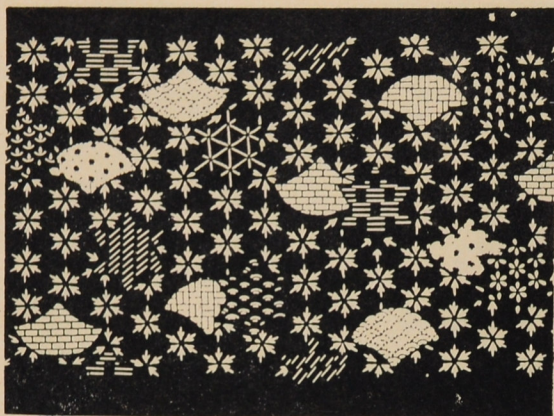


- 343 Type: *jizomari*
Yatsubashi: irises and "broken" bridge,
jundō pattern, bamboo basket-work;
kasuri effect
 Technique: *tsukibori*
 30,2 × 41,8 cm (20,2 cm)
 Inv. No. A 10.425



- 344 Type: *jizomari*
 Zigzag stripes, *higaki* pattern,
 chrysanthemum flowers, *asanoha*
 Technique: *tsukibori*, *kiribori*
 30,7 × 41,5 cm (18,1 cm)
 Inv. No. A 10.485



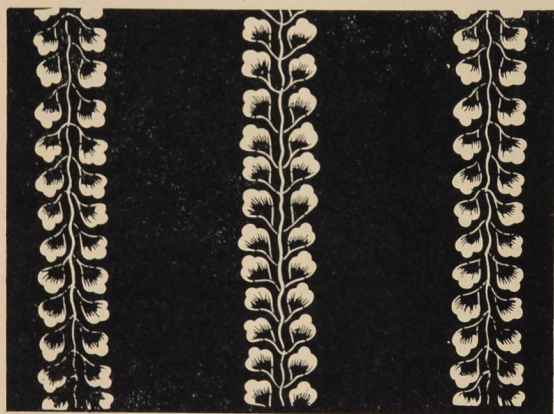


- 345 Type: *jizomari*
 Geometrical and flower motifs against
 regular flower design
 Technique: *tsukibori, dōgubori,*
ichimaizuki
 29,4 × 40 cm (20 cm)
 Inv. No. A 10.337

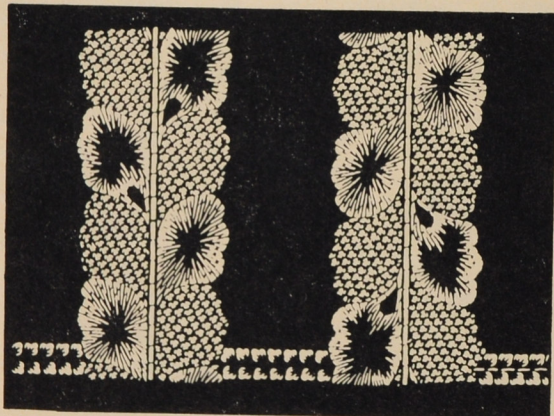


- 346 Type: *jizomari*
kikkō pattern enclosing flowers,
 snow crystals
 Technique: *tsukibori, ichimaizuki*
 31 × 41 cm (21 cm)
 Inv. No. A 10.636

f) Geometrical patterns
 composed of wistaria
 flowers



- 347 Type: *jizomari*
 Stripes of wistaria flowers
 Technique: *tsukibori; itoire*
 32,6 × 40,3 cm (22,2 cm)
 Inv. No. A 10.342

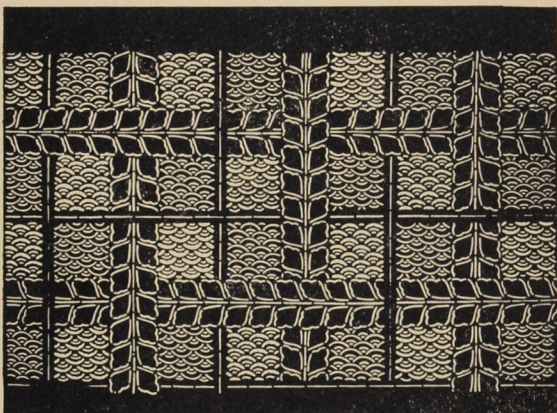


- 348 Type: *jizomari*
 Stripes of pine cones and needles
 and wistaria flowers
 Technique: *tsukibori, dōgubori*
 32 × 41 cm (22,5 cm)
 Inv. No. A 10.311

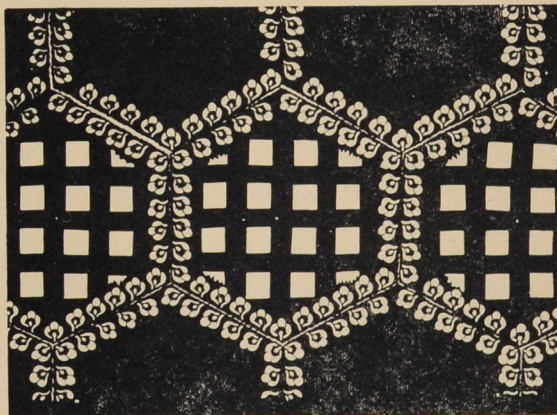
- 349 Type: *jizomari*
 Stripes and wistaria flowers, gourd
 Technique: *tsukibori*, *hikibori*; *itoire*
 22,3 X 40 cm (19,9 cm)
 Inv. No. A 10.475



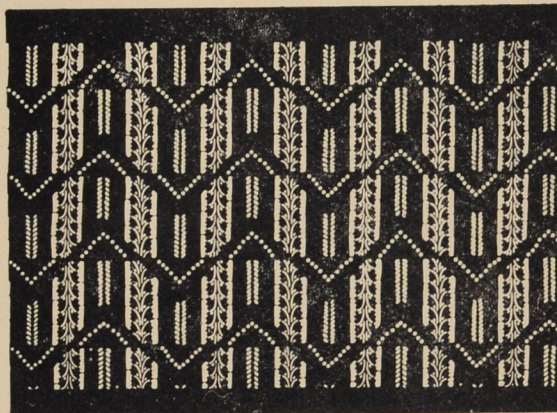
- 350 Type: *jizomari*
 Chequer of wistaria flowers,
seigaiha waves
 Technique: *tsukibori*, *ichimaiwa*
 32 X 41 cm (20,8 cm)
 Inv. No. A 10.406



- 351 Type: *jizomari*
 Wistaria flower in *kikkō* arrangement
 Technique: *tsukibori*, *ichimaizuki*
 30 X 40 cm (20,2 cm)
 Inv. No. A 10.480

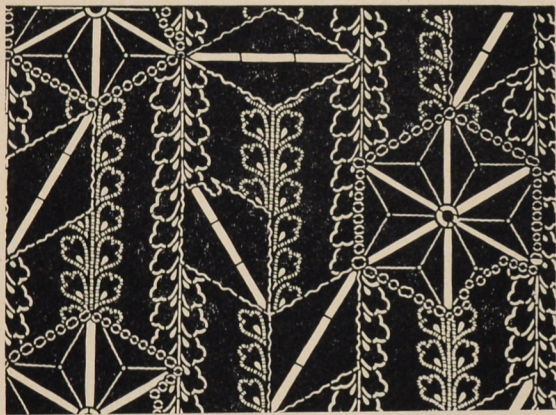


- 352 Type: *jizomari*
 Stripes of wistaria flowers, zigzag lines
 Technique: *dōgubori*, *kiribori*, *tsukibori*
 30,5 X 40,2 cm (21,3 cm)
 Inv. No. A 10.353

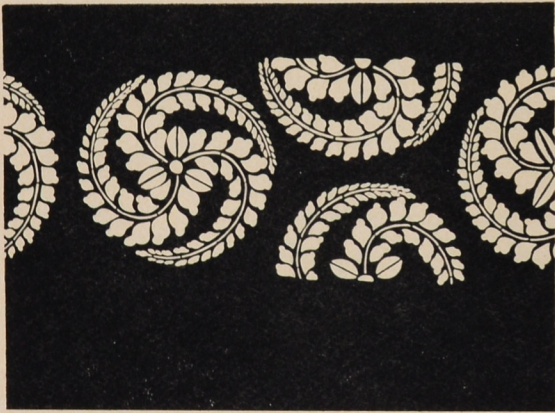




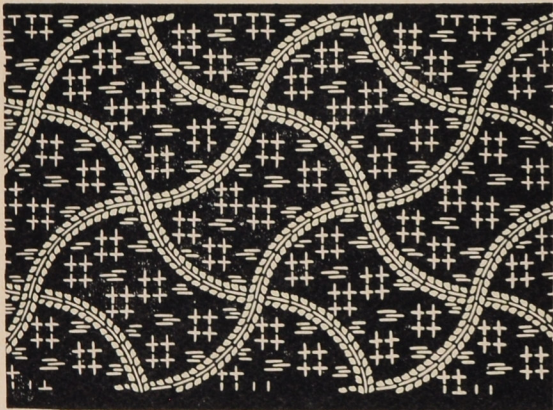
353 Type: *jizomari*
Bishamon-kikkō, wistaria flower
 Technique: *tsukibori*, *ichimaizuki*
 31,1 × 40,3 cm (21,6 cm)
 Inv. No. A 10.387



354 Type: *jizomari*
 Stripes of wistaria flower, *kikkō*
 enclosing *asanoha* pattern
 Technique: *tsukibori*, *dōgubori*
 31,3 × 40,6 cm (21,1 cm)
 Inv. No. A 10.491



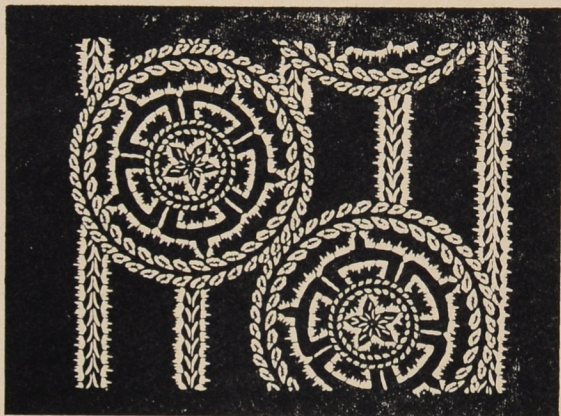
355 Type: *jizomari*
 Wistaria flower in *mitsutomoe*
 arrangement
 Technique: *tsukibori*
 26,3 × 41,4 cm (14,2 cm)
 Inv. No. A 10.404



356 Type: *jizomari*
 Wistaria in *fundō* pattern arrangement;
kasuri effect
 Technique: *tsukibori*, *ichimaizuki*
 31,2 × 42 cm (19,5 cm)
 Inv. No. A 10.498

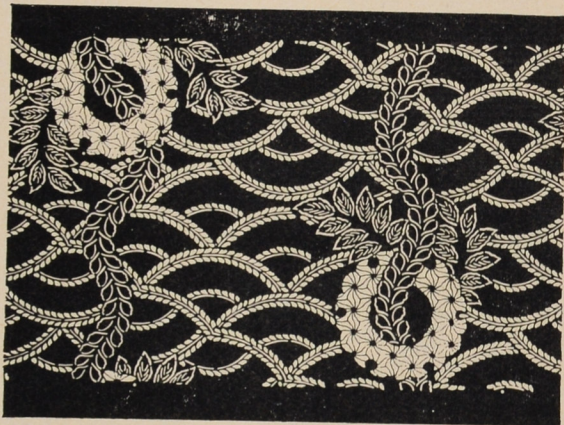
357 Type: *jizomari*

Wistaria-flower circles against
wistaria stripes, conventionalized
flower; *kasuri* effect
Technique: *tsukibori*, *dōgubori*
30,5 × 39,4 cm (21,2 cm)
Inv. No. A 10.468



358 Type: *jizomari*

Wistaria flower in *seigaiha* arrangement
and in realistic representation,
snow flakes with asanoha motif
Technique: *tsukibori*, *dōgubori*
29,7 × 41,5 cm (17,4 cm)
Inv. No. A 10.587



359 Type: *jizomari*

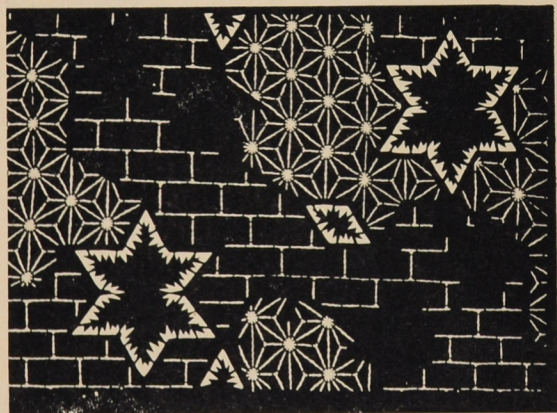
Wistaria flower in realistic
representation against wistaria
in *seigaiha* arrangement
Technique: *tsukibori*, *dōgubori*
29 × 40,5 cm (17,8 cm)
Inv. No. A 10.439



2. Patterns with geometric background



360 Type: *jizomari*
Sparrows and pine against square lattice
Technique: *tsukibori*
32 × 41 cm (21,3 cm)
Inv. No. A 10.629



361 Type: *jizomari*
asanoha against *ichinomoyō* pattern
Technique: *tsukibori*
31,7 × 40,4 cm (20,8 cm)
Inv. No. A 10.385



362 Type: *jizomari*
tachibana against *ichinomoyō*, *seigaiha*
Technique: *ichimaiwa*, *tsukibori*
30,8 × 40,4 cm (20,3 cm)
Inv. No. A 10.345

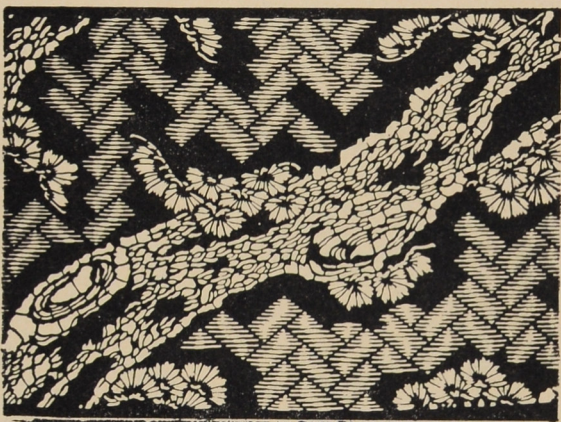
- 363 Type: *jizomari*
Genjikō and irregular medallions
 enclosing wistaria and wild carnation,
 against *higaki* pattern
 Technique: *tsukibori*, *dōgubori*
 29,5 X 39,8 cm (20,8 cm)
 Inv. No. A 10.383



- 364 Type: *jizomari*
ichō (Gingko biloba) leaves enclosing
karahana and squares against *higaki*
 pattern
 Technique: *tsukibori*, *ichimaizuki*
 31 X 40,6 cm (19 cm)
 Inv. No. A 10.487

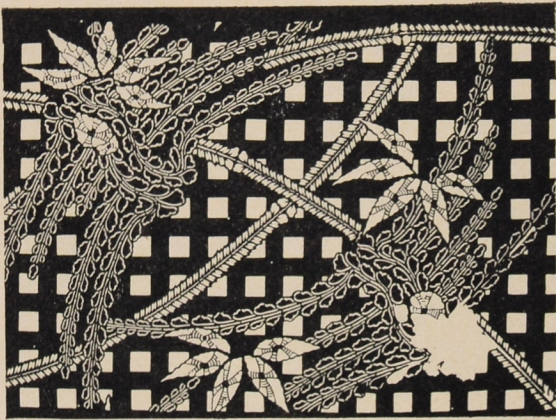


- 365 Type: *jizomari*
 Pine against *higaki*; *kasuri* effect
 Technique: *tsukibori*
 28,9 X 40,7 cm (20,1 cm)
 Inv. No. A 10.482

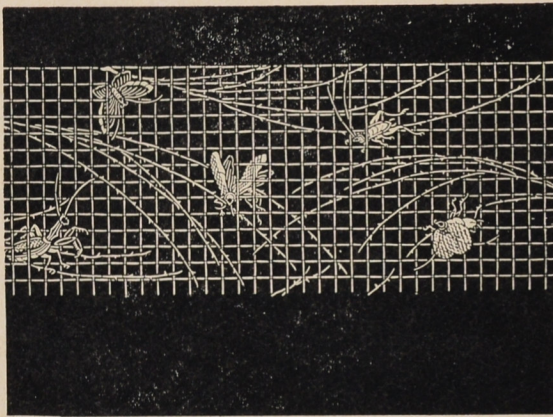


- 366 Type: *jizomari*
 Bamboo against lattice; *kasuri* effect
 Technique: *dōgubori*, *ichimaizuki*
 30,8 X 40,8 cm (21,3 cm)
 Inv. No. A 10.329

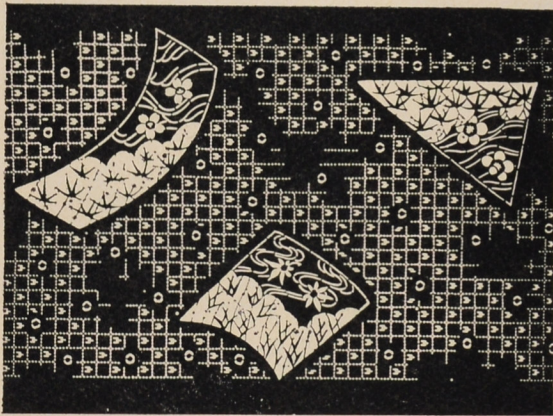




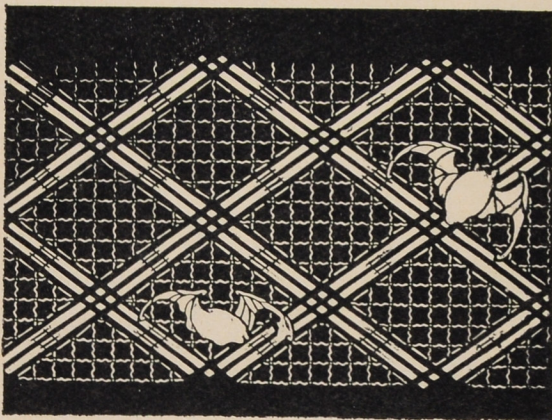
367 Type: *jizomari*
 Wistaria and bamboo against square
 lattice
 Technique: *dōgubori, ichimaizuki,*
tsukibori
 31 × 39,7 cm (21,1 cm)
 Inv. No. A 10.633



368 Type: *jizomari*
 Grass and insect against lattice
 Technique: *tsukibori, ichimaizuki, kiribori*
 25,8 × 41,3 cm (13,2 cm)
 Inv. No. A 10.122

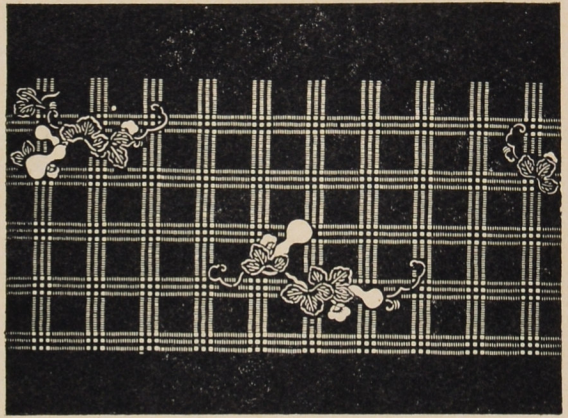


369 Type: *jizomari*
 Paper leaves with *sakura*, bamboo, plum,
momiji, against fine chequer
 Technique: *dōgubori, tsukibori*
 32 × 42 cm (21 cm)
 Inv. No. A 10.351

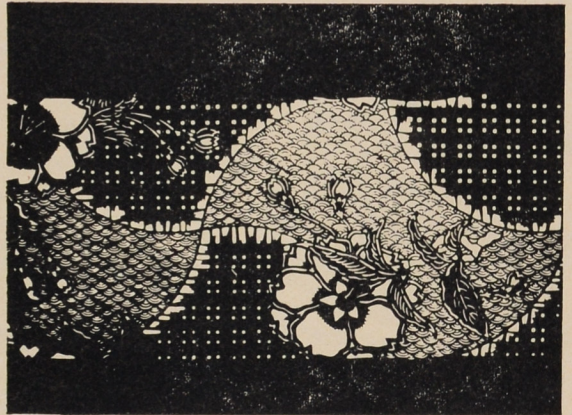


370 Type: *jizomari*
 Lozenge diaper and bats against
 fine lattice
 Technique: *tsukibori, ichimaizuki*
 24,9 × 41,1 cm (14,6 cm)
 Inv. No. A 10.164

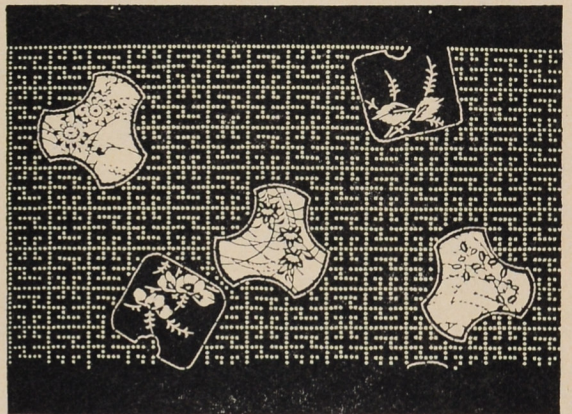
- 371 Type: *jizomari*
 Gourd against triple square lattice
 (*sansuji kōshi*)
 Technique: *ichimaizuki, tsukibori*
 25,8 × 41,3 cm (12,3 cm)
 Inv. No. A 10.127



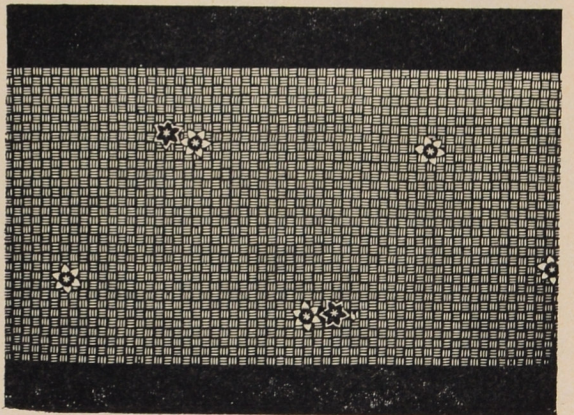
- 372 Type: *jizomari*
 Large *fundō* pattern enclosing *sakura*
 and *seigaiha* pattern against fine
 chequer
 Technique: *tsukibori, ichimaiwa,*
dōgubori
 23,5 × 21,1 cm (12,2 cm)
 Inv. No. A 10.141

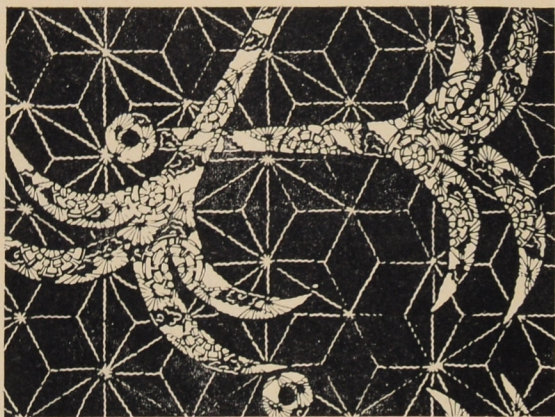


- 373 Type: *jizomari*
 Plaques enclosing flower motifs
 against lattice
 Technique: *dōgubori, tsukibori*
 29,8 × 41,5 cm (18,9 cm)
 Inv. No. A 10.340

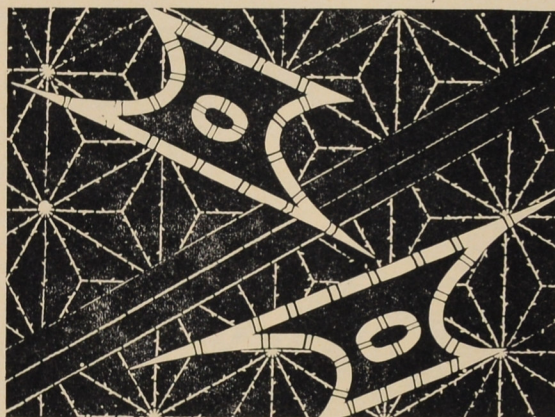


- 374 Type: *jizomari*
 Clematis flower against fine *ajiro*
 pattern
 Technique: *ichimaizuki, tsukibori*
 25,3 × 40,8 cm (14,2 cm)
 Inv. No. A 10.151

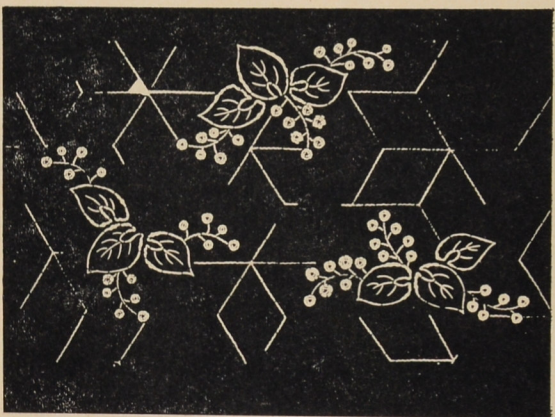




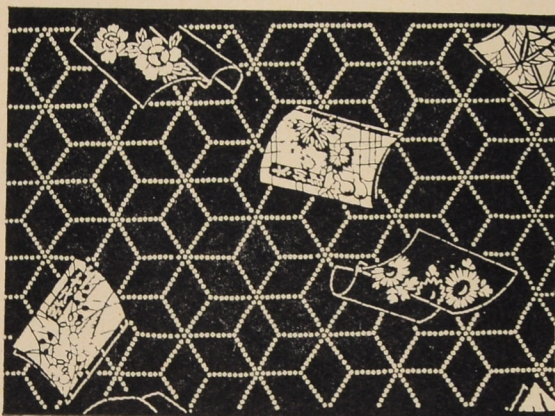
- 375 Type: *jizomari*
 Anchors enclosing wheels, pines, clouds,
 against *asanoha* pattern
 Technique: *tsukibori*
 30,6 × 40,7 cm (21,5 cm)
 Inv. No. A 10.589



- 376 Type: *jizomari*
shamisen bridges against *asanoha*
 pattern
 Technique: *tsukibori*, *dōgubori*,
ichimaizuki
 31 × 40,3 cm (21,3 cm)
 Inv. No. A 10.602

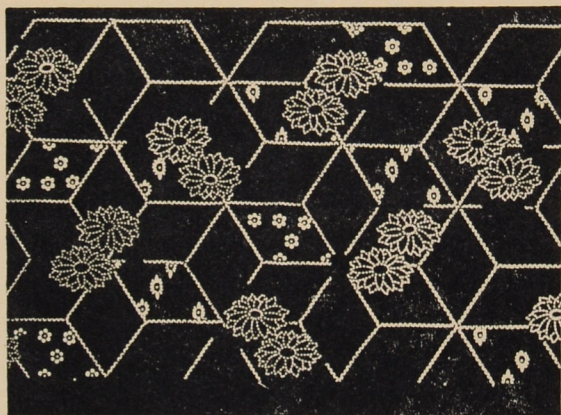


- 377 Type: *jizomari*
kiri against fragmentary *asanoha* pattern
 Technique: *dōgubori*, *tsukibori*
 30,6 × 41,3 cm (20,1 cm)
 Inv. No. A 10.416



- 378 Type: *jizomari*
 Books enclosing flowers, gourd, bamboo,
 against *asanoha* pattern
 Technique: *dōgubori*, *tsukibori*
 30,2 × 41,2 cm (19,2 cm)
 Inv. No. A 10.086

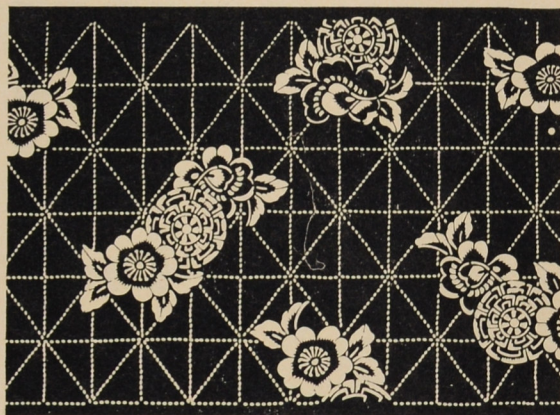
- 379 Type: *jizomari*
 Chrysanthemum flowers and small
 flowers against *asanoha* pattern
 Technique: *dōgubori*, *kiribori*
 30,6 × 42,3 cm (21,1 cm)
 Inv. No. A 10.323



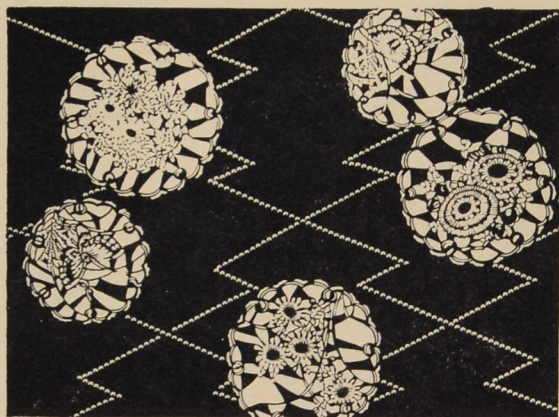
- 380 Type: *jizomari*
 Wistaria against lozenge diaper
 Technique: *tsukibori*
 30,6 × 41,2 cm (20,3 cm)
 Inv. No. A 10.495

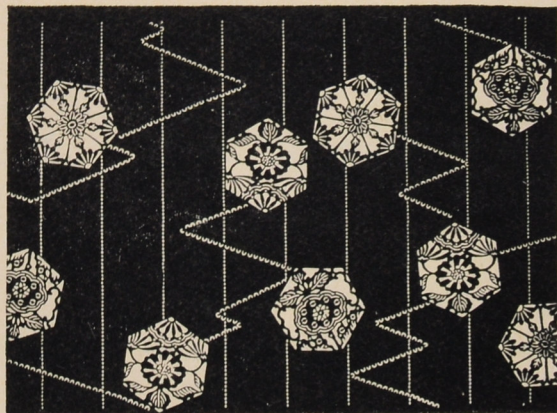


- 381 Type: *jizomari*
 Plum blossoms and wheels against
 lozenge diaper
 Technique: *dōgubori*, *tsukibori*
 25,5 × 41,2 cm (13,8 cm)
 Inv. No. A 10.271

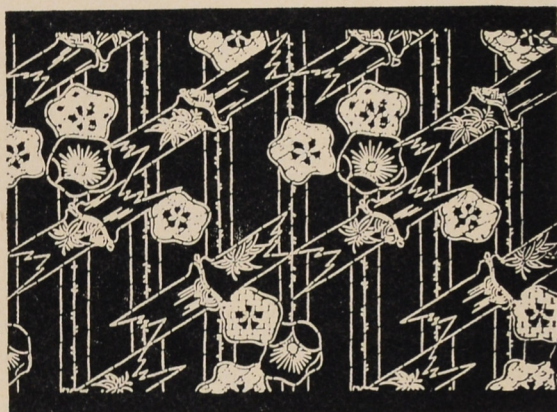


- 382 Type: *jizomari*
 Medallions enclosing chrysanthemum
 flowers and butterflies against
matsukawabishi pattern
 Technique: *dōgubori*, *tsukibori*
 33,7 × 41,3 cm (22,2 cm)
 Inv. No. A 10.050

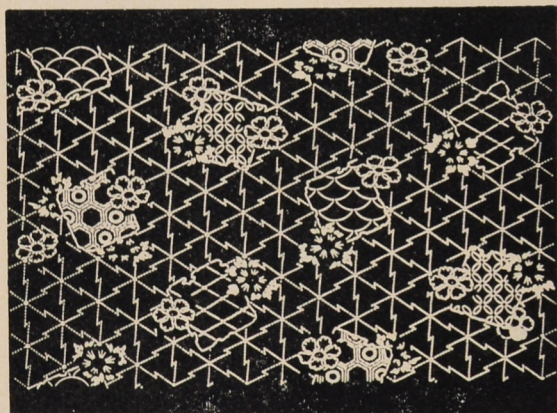




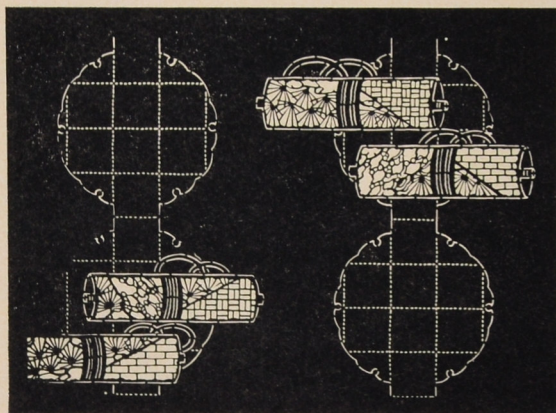
383 Type: *jizomari*
kikkō pattern enclosing conventionalized
 flowers against stripes
 Technique: *dōgubori*, *tsukibori*, *kiribori*
 30,5 × 42,2 cm (21 cm)
 Inv. No. A 10.390



384 Type: *jizomari*
shōchikubai (bamboo and plum blossoms
 enclosing pine needles); *shibori* effect
 Technique: *tsukibori*, *dōgubori*,
ichimaizuki
 30,6 × 40,7 cm (21,5 cm)
 Inv. No. A 10.321



385 Type: *jizomari*
 Plaques containing geometric motifs
 and flowers against lattice of zigzag
 lines
 Technique: *dōgubori*, *ichimaizuki*,
tsukibori
 32,8 × 40,8 cm (21,4 cm)
 Inv. No. A 10.325



386 Type: *jizomari*
 Scrolls with *ajiro*, *ichinomoyō* pattern
 and pines against snow crystals
 Technique: *dōgubori*, *ichimaizuki*,
tsukibori
 30,2 × 41,2 cm (20,8 cm)
 Inv. No. A 10.391

387 Type: *jizomari*

Conventionalized plum blossoms against linear pattern; *kasuri* and *shibori* effect
Technique: *kiribori*, *dōgubori*, *tsukibori*
31 X 40,7 cm (21 cm)
Inv. No. A 10.333



388 Type: *jizomari*

tachibana against *kikkō* and *karahana* design
Technique: *ichimaizuki*, *kiribori*,
dōgubori, *tsukibori*
30,8 X 41,5 cm (19 cm)
Inv. No. A 10.073



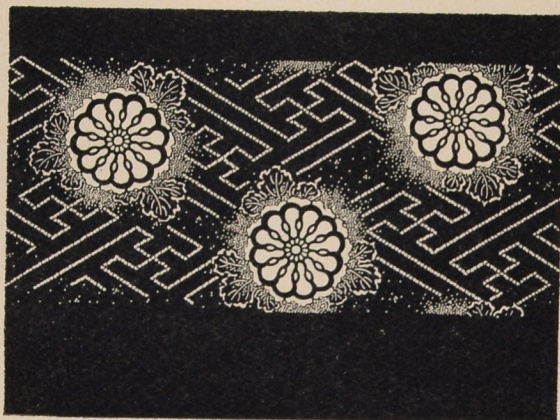
389 Type: *jizomari*

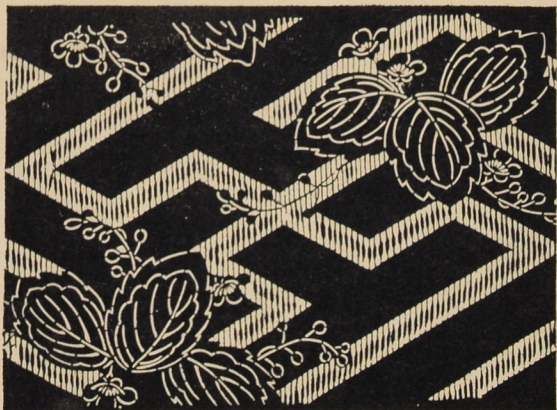
Paper leaves with geometric and floral motifs against key fret (*manji-tsunagi*)
Technique: *kiribori*, *ichimaizuki*,
tsukibori
30,0 X 41,3 cm (19,8 cm)
Inv. No. A 10.322



390 Type: *jizomari*

Gourds in *mon*-like arrangement against key fret
Technique: *dōgubori*, *kiribori*, *tsukibori*
25,4 X 41 cm (14,1 cm)
Inv. No. A 8.610

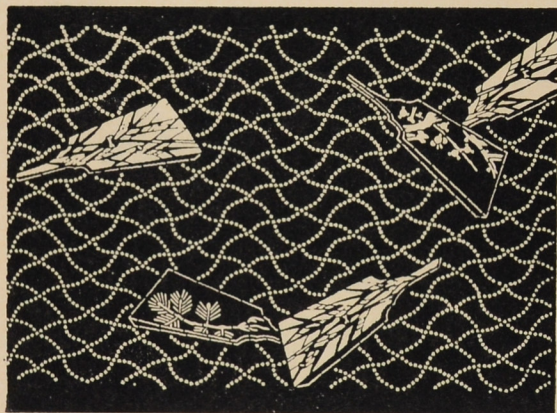




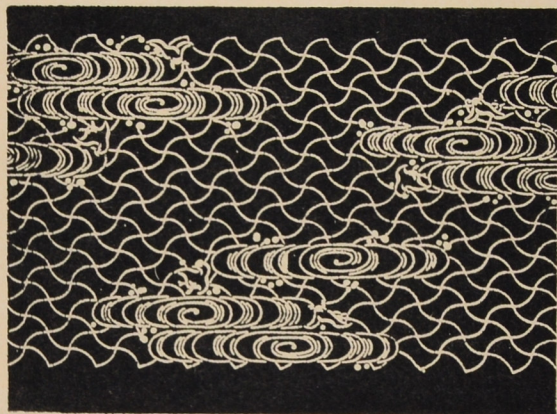
391 Type: *jizomari*
kiri against key fret in *moyō keman*
 representation
 Technique: *tsukibori*
 30,4 × 41,7 cm (19,6 cm)
 Inv. No. A 10.094



392 Type: *jizomari*
 Flowering scrolls against key fret design
 Technique: *tsukibori*
 28 × 40 cm (19 cm)
 Inv. No. A 10.959



393 Type: *jizomari*
hagoita (battledore) with *shōchikubai*
 design against *tōyama* ("far-away
 mountains") design
 Technique: *dōgubori*, *tsukibori*
 30 × 41,9 cm (19 cm)
 Inv. No. A 10.080

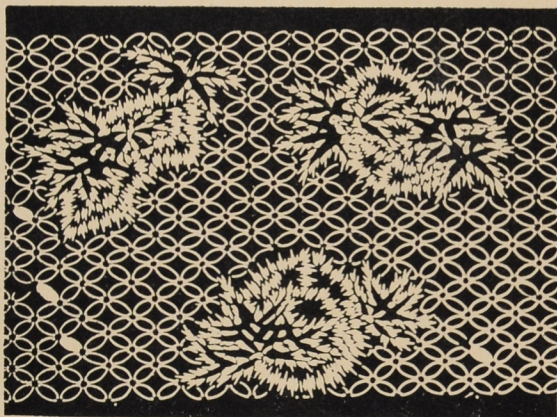


394 Type: *jizomari*
 Plovers against waves (*nami ni chidori*)
 against *fundō* design
 Technique: *tsukibori*, *kiribori*
 30,4 × 40,5 cm (20 cm)
 Inv. No. A 10.341

395 Type: *jizomari*
Plovers against *shippō* pattern
Technique: *tsukibori*, *kiribori*,
ichimaizuki
30,3 × 41,5 cm (19,7 cm)
Inv. No. 35.524



396 Type: *jizomari*
Bamboo against *shippō*
Technique: *tsukibori*
31,2 × 41 cm (21,7 cm)
Inv. No. A 10.327

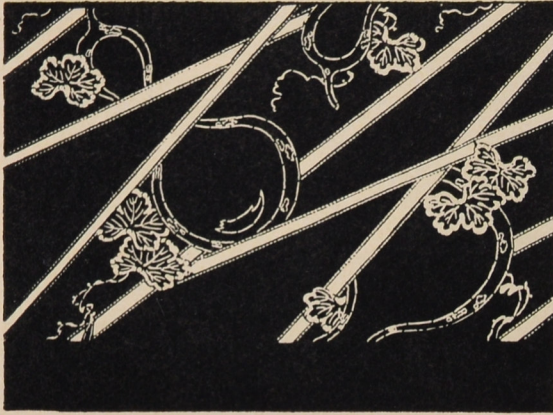


397 Type: *jizomari*
Bamboo against zigzag lines
Technique: *ichimaizuki*, *dōgubori*,
tsukibori
31,4 × 39,8 cm (20,9 cm)
Inv. No. A 10.617



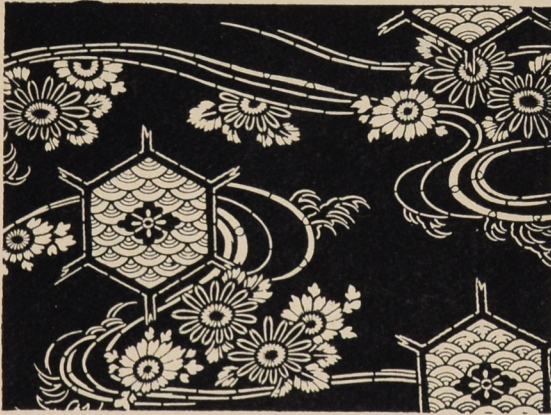
398 Type: *jizomari*
Irregular medallions enclosing wistaria
flowers against oblique stripes
Technique: *tsukibori*
30 × 41,7 cm (19,5 cm)
Inv. No. A 10.343



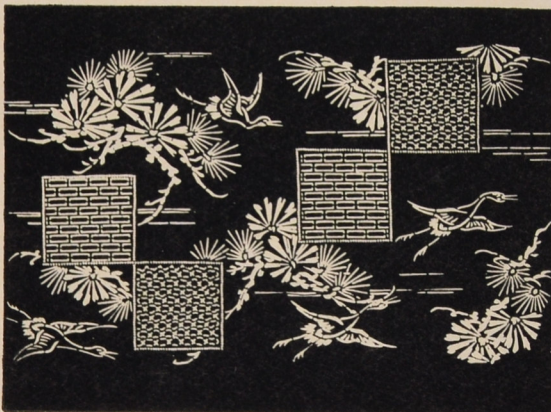


399 Type: *jizomari*
 Gourd and crossing lines
 Technique: *dōgubori, tsukibori; itoire*
 30,7 × 40,6 cm (21,1 cm)
 Inv. No. A 10.415

3. Geometric patterns against motifs in realistic representation



400 Type: *jizomari*
kikkō, seigaiha, karakusa against water
 stream and chrysanthemum flowers
 Technique: *tsukibori*
 30,7 × 41,6 cm (20,5 cm)
 Inv. No. A 10.091



401 Type: *jizomari*
 Squares with *ichinomoyō* and "chain"
 against pines and cranes
 Technique: *tsukibori, ichimaizuki*
 30,1 × 40,5 cm (20,4 cm)
 Inv. No. A 10.317

- 402 Type: *jizomari*
 Fragmentary *shippō* pattern against
 flowering scrolls
 Technique: *tsukibori*, *kiribori*
 33,6 × 40,3 cm (14,7 cm)
 Inv. No. A 3.691



- 403 Type: *jizomari*
fuji roundels encircling *karahana*
 against *susuki* grass
 Technique: *tsukibori*
 25 × 41,2 cm (16,7 cm)
 Inv. No. A 10.304



- 404 Type: *jizomari*
 Medallions enclosing irises
 against willow
 Technique: *tsukibori*
 31,5 × 40,3 cm (21,5 cm)
 Inv. No. A 10.586



4. Various patterns against conventionalized clouds



405 Type: *jizomari*
Leaves against clouds
Technique: *tsukibori*
29,1 × 40,3 cm (19 cm)
Inv. No. A 10.640



406 Type: *jizomari*
Chinese bellflower (*kikyō*) and
Pampas grass (*susuki*) against clouds
Technique: *tsukibori*
28,9 × 40,6 cm (19 cm)
Inv. No. A 10.492



407 Type: *jizomari*
Irises against clouds
Technique: *tsukibori*
30 × 41,7 cm (19,3 cm)
Inv. No. A 10.471

408 Type: *jizomari*
ominaeshi (*Patrinia scabiosaefolia*)
against clouds
Technique: *tsukibori*, *kiribori*
28,8 × 40,3 cm (18,6 cm)
Inv. No. A 10.445



409 Type: *jizomari*
Old plum tree against clouds
Technique: *tsukibori*
29,3 × 40,4 cm (19 cm)
Inv. No. A 10.356



410 Type: *jizomari*
hagi (*Lespedeza bicolor*) against clouds
Technique: *tsukibori*, *kiribori*
29,6 × 41,5 cm (19,2 cm)
Inv. No. A 10.332



411 Type: *jizomari*
Maple against clouds
Technique: *tsukibori*
30,3 × 40,7 cm (20 cm)
Inv. No. A 10.331





412 Type: *jizomari*
Chrysanthemum enclosed in medallions
against clouds
Technique: *tsukibori*, *kiribori*
30 X 41,3 cm (19,2 cm)
Inv. No. A 10.330



413 Type: *jizomari*
Irises against clouds
Technique: *tsukibori*
28,3 X 40,3 cm (18,3 cm)
Inv. No. A 10.326

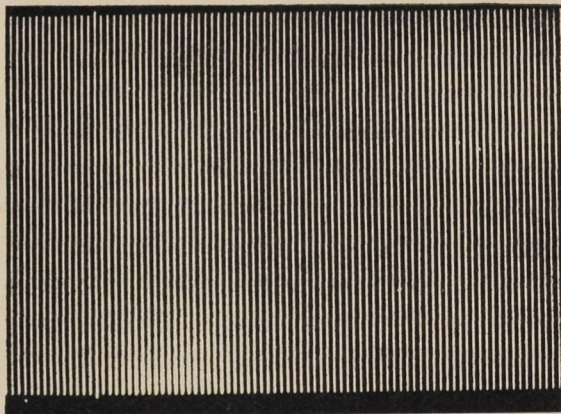


414 Type: *jizomari*
susuki grass against clouds
Technique: *tsukibori*
29 X 40,2 cm (19,2 cm)
Inv. No. A 10.045

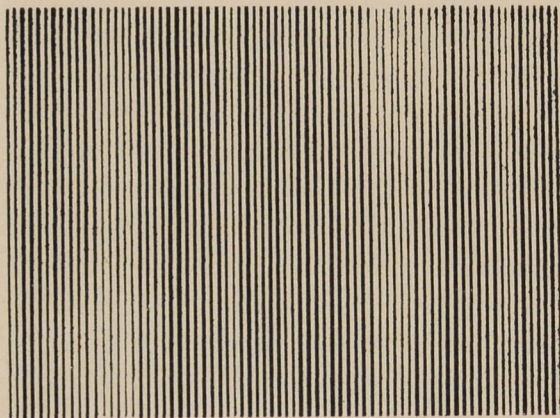
5. Stripes

a) Simple stripes or patterns of striped character

415 Type: *shima* (stripe)
Regular vertical stripes (*tateshima*)
Technique: *hikibori*; *itoire*
30,8 × 47,1 cm (17,3 cm)
Inv. No. A 10.766

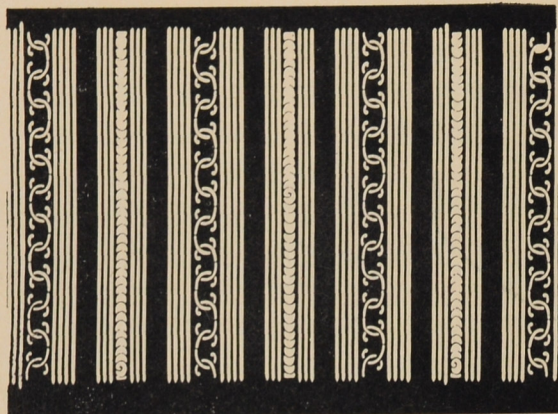


416 Type: *shima*
Stripes of *kawari-suji* type
Technique: *hikibori*; *itoire*
44,1 × 45 cm (28,7 cm)
Inv. No. A 10.767



417 Type: *shima*
Stripes (*kawari-suji*) and zigzag lines
Technique: *hikibori*, *tsukibori*; *itoire*
24,8 × 41,6 cm (14,4 cm)
Inv. No. A 10.252

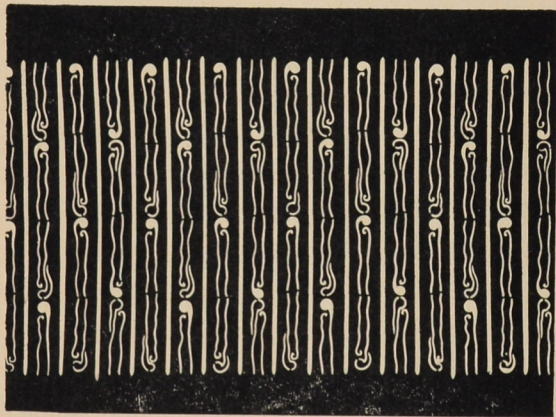




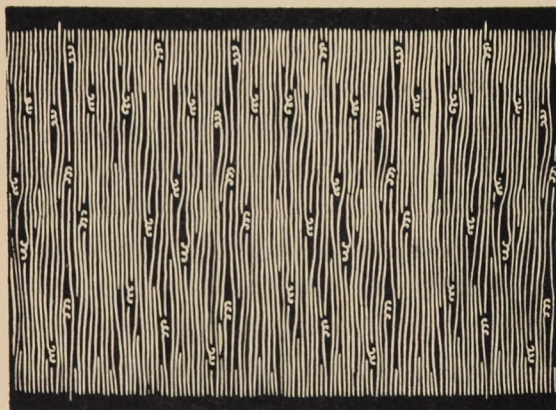
- 418 Type: *shima*
 Stripes composed of lines, chains
 (*kan-tsunagi*) and semicircles
 (conventionalized waves?)
 Technique: *hikibori*, *tsukibori*; *itoire*
 24,8 × 41,7 cm [14,3 cm]
 Inv. No. A 10.236



- 419 Type: *shima*
 Stripes composed of "string", bamboo
 blind, flowers
 Technique: *tsukibori*
 25 × 41 cm [13 cm]
 Inv. No. A 10.275



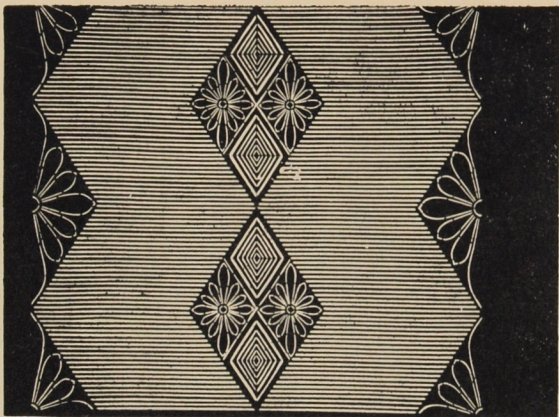
- 420 Type: *shima*, *yōrō*
 Bracken (*warabide*) alternating
 with lines
 Technique: *hikibori*, *tsukibori*
 31,2 × 42,5 cm [19,5 cm]
 Inv. No. A 10.349



- 421 Type: *shima*, *yōrō*
 Bracken (*warabide*)
 Technique: *tsukibori*
 33,4 × 37,5 cm [19,7 cm]
 Inv. No. A 10.083

b) Stripes form part or background of the pattern

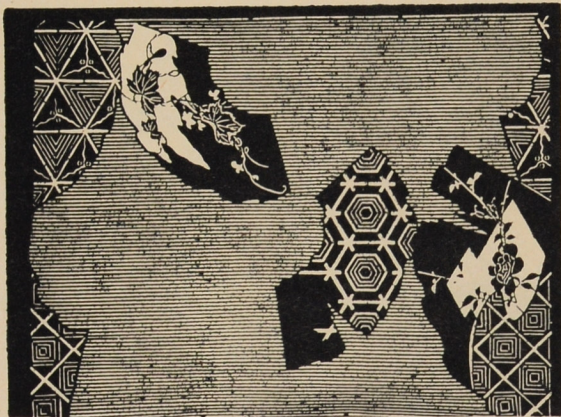
- 422 Type: *jizomari*
Lozenges enclosing chrysanthemum flowers and *inazuma* pattern against fine stripes
Technique: *hikibori, tsukibori; itoire*
41,6 × 51,2 cm (34,2 cm)
Inv. No. A 10.721



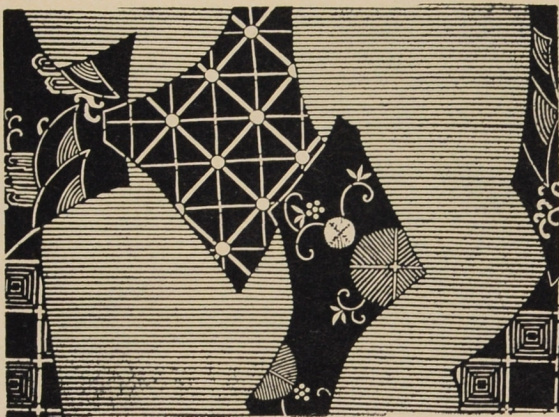
- 423 Type: *jizomari*
Swallows in rain against fine stripes
Technique: *hikibori, tsukibori*
42,2 × 52,2 cm (34 cm)
Inv. No. A 10.735

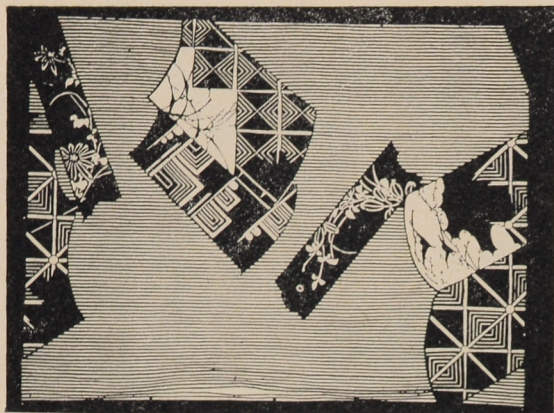


- 424 Type: *jizomari*
Old fan papers enclosing *kikkō* and *raimon* pattern, gourd and peony against fine stripes
Technique: *hikibori, tsukibori; itoire*
41 × 55,2 cm (34,3 cm)
Inv. No. A 10.706

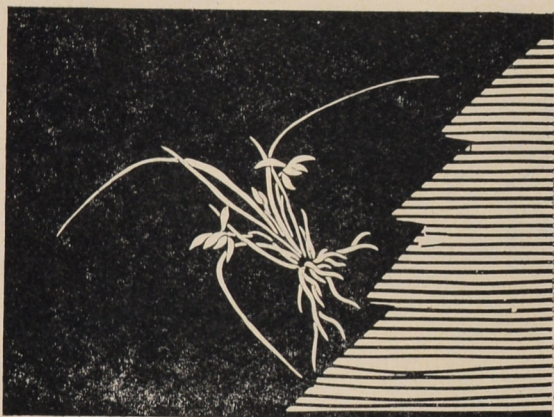


- 425 Type: *jizomari*
Geometric motifs, *karakusa*, Chinese rock against fine stripes
Technique: *hikibori, tsukibori, kiribori; itoire*
41,3 × 56,5 cm (35 cm)
Inv. No. 3.913

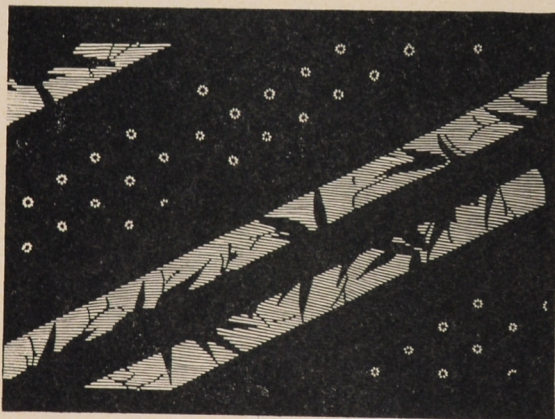




426 Type: *jizomari*
 Bamboo plaque with *hagi* motif,
 books (?) with geometric and other
 motifs against finely striped ground
 Technique: *hikibori*, *tsukibori*; *itoire*
 41,3 × 56,5 cm (35 cm)
 Inv. No. 3.913



427 Type: *jizomari*
 Irises with roots and stripes
 Technique: *tsukibori*
 38,5 × 54 cm (31 cm)
 Inv. No. A 10.720



428 Type: *jizomari*
 Stripes of chrysanthemum flowers,
 bamboo against stripes
 Technique: *tsukibori*, *dōgubori*
 29,3 × 40,8 cm (22 cm)
 Inv. No. A 3.688

c) Patterns against stripes
 with beads of various
 forms



429 Type: *jizomari*
uchiwa (round fans) with Chinese and
 Japanese motifs: irises and tortoises,
 gourd and *kikkō*, *karakusa*, against
 stripes with small lozenges
 Technique: *hikibori*, *tsukibori*; *itoire*
 41,8 × 63,5 cm (33 cm)
 Inv. No. 3.941

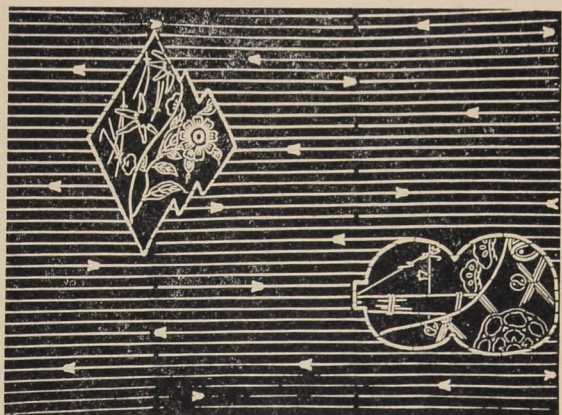
- 430 Type: *jizomari*
fundō medallions enclosing various
 natural motifs against stripes with beads
 Technique: *hikibori*, *tsukibori*; *itoire*
 41,7 X 63 cm (33,2 cm)
 Inv. No. 3.934



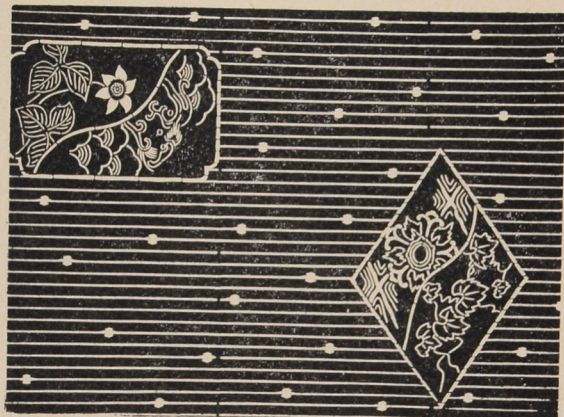
- 431 Type: *jizomari*
 Medallions enclosing Chinese and
 Japanese motifs against stripes with
 small squares
 Technique: *tsukibori*; *itoire*
 42,5 X 62,7 cm (34,3 cm)
 Inv. No. 3.931



- 432 Type: *jizomari*
matsukawabishi and gourd enclosing
 various motifs, against stripes with
 bell-like beads
 Technique: *tsukibori*; *itoire*
 41,8 X 62,5 cm (33 cm)
 Character "two" in ink
 Inv. No. 3.930



- 433 Type: *jizomari*
 Plaques with Chinese and Japanese
 motifs against stripes with small
matsukawabishi
 Technique: *tsukibori*; *itoire*
 42,2 X 64 cm (34,4 cm)
 Inv. No. 3.926

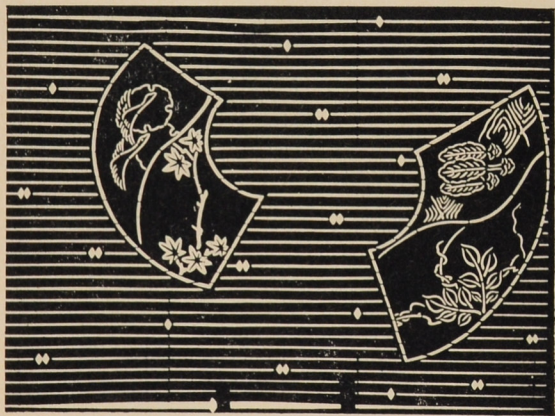




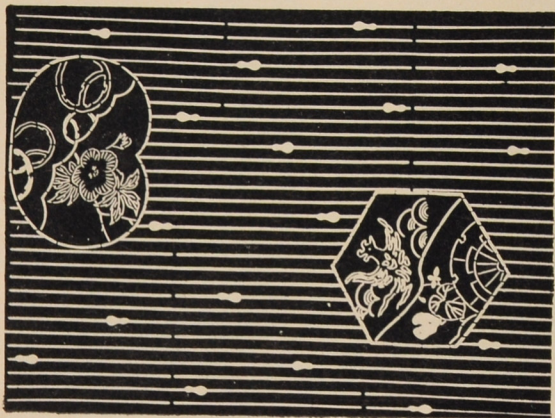
- 434 Type: *jizomari*
 Plovers enclosing pine, *mizuguruma*,
 chrysanthemum and reed against stripes
 with small tassels
 Technique: *tsukibori*; *itoire*
 42,3 × 63,8 cm (34 cm)
 Inv. No. 3.923



- 435 Type: *jizomari*
 European umbrellas enclosing Chinese
 and Japanese motifs against stripes
 with small balls
 Technique: *tsukibori*; *itoire*
 41,2 × 62,3 cm (33,2 cm)
 Inv. No. 3.921



- 436 Type: *jizomari*
 Fan papers enclosing various motifs,
 against stripes with small lozenges
 Technique: *tsukibori*; *itoire*
 41,7 × 60,5 cm (32,4 cm)
 Inv. No. 3.920



- 437 Type: *jizomari*
kikkō and lotus leaf medallions
 enclosing various motifs against stripes
 with small gourds
 Technique: *tsukibori*; *itoire*
 42,2 × 62 cm (33,8 cm)
 Inv. No. 3.919

- 438 Type: *jizomari*
 Floral medallions enclosing various motifs against stripes with conventionalized clouds
 Technique: *tsukibori*; *itoire*
 40,5 X 62,2 cm (32 cm)
 Inv. No. 3.918



- 439 Type: *jizomari*
 Plaque and vessel enclosing various motifs against stripes with lozenges
 Technique: *tsukibori*; *itoire*
 42 X 62 cm (33 cm)
 Character "two" in lozenge
 Inv. No. 3.915

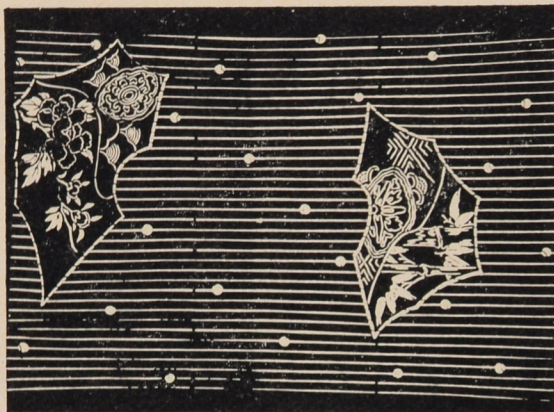


- 440 Type: *jizomari*
 Gourd-shaped medallions enclosing *kiri* and peonies against stripes with small bells
 Technique: *tsukibori*; *itoire*
 39,5 X 63,2 cm (32 cm)
 Inv. No. 3.907



- 441 Type: *jizomari*
 Shell-shaped medallions enclosing various motifs against stripes with small *fundō*
 Technique: *tsukibori*; *itoire*
 41,6 X 63,2 cm (34 cm)
 Inv. No. 31903





- 442 Type: *jizomari*
 Irregular medallions enclosing various motifs against stripes with small pearls
 Technique: *tsukibori*; *itoire*
 41,3 × 63,1 cm [33,3 cm]
 Inv. No. 3.902

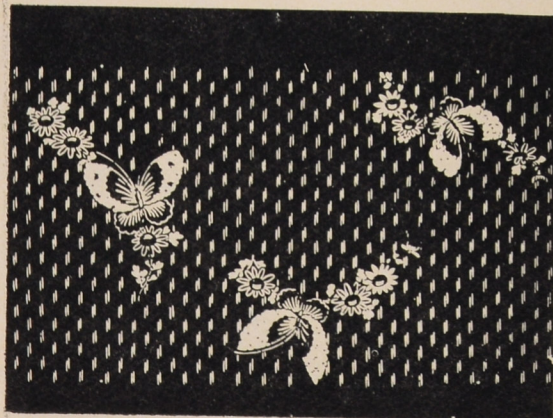


- 443 Type: *jizomari*
 Lotus leaf medallions enclosing various motifs against stripes with small arrow-heads
 Technique: *tsukibori*; *itoire*
 39,8 × 62,7 cm [31,5 cm]
 Inv. No. 3.901



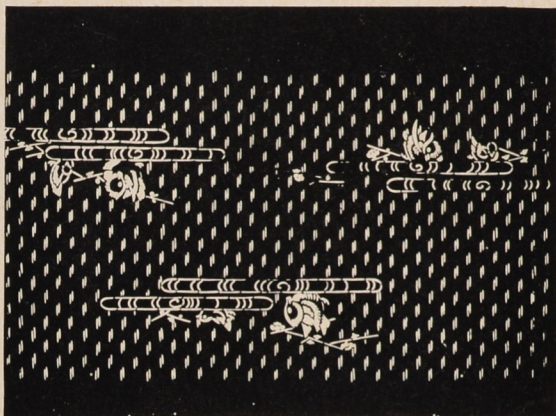
- 444 Type: *jizomari*
 Plaques and gourds enclosing various motifs against stripes with small arrow-heads
 Technique: *tsukibori*; *itoire*
 41,5 × 73,8 cm [35 cm]
 Inv. No. 3.900

d) patterns on ground
 covered by short strokes

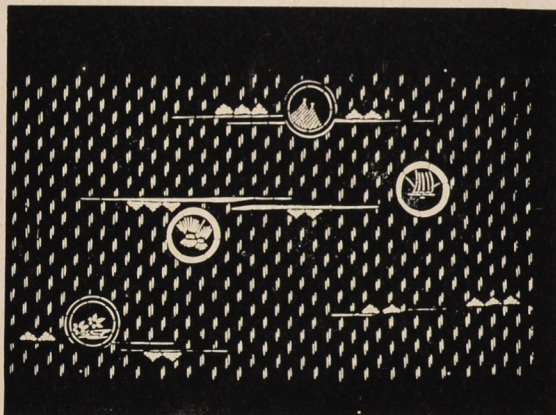


- 445 Type: *jizomari*
 Chrysanthemum and butterflies
 Technique: *tsukibori*, *ichimaizuki*
 29 × 40,8 cm [19 cm]
 Inv. No. A 10.469

- 446 Type: *jizomari*
 Mandarin ducks and blooming twigs
 Technique: *tsukibori, ichimaizuki*
 28,8 × 41 cm [18,7 cm]
 Inv. No. A 10.432



- 447 Type: *jizomari*
 Grass and family crests
 Technique: *tsukibori, ichimaizuki*
 28,4 × 40,8 cm [19 cm]
 Inv. No. A 10.413

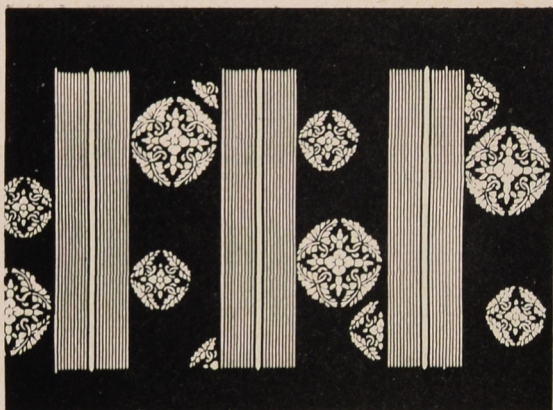


- 448 Type: *jizomari*
 Bamboo in *kasuri* effect and fan papers
 with *asanoha* pattern
 Technique: *tsukibori*
 31,5 × 41,6 cm [22 cm]
 Inv. No. A 10.436



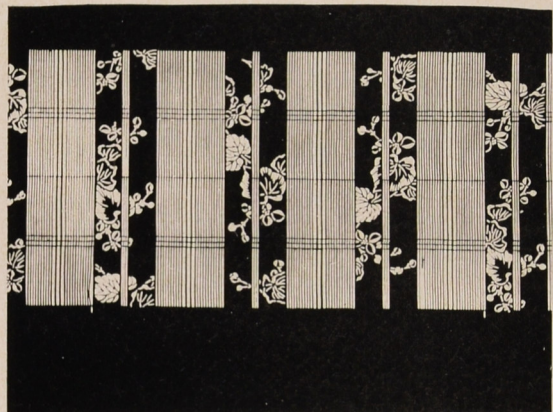
- 449 Type: *jizomari*
 sakura blossoms and pine needles
 Technique: *tsukibori*
 31,8 × 41,6 cm [19,7 cm]
 Inv. No. A 10.436



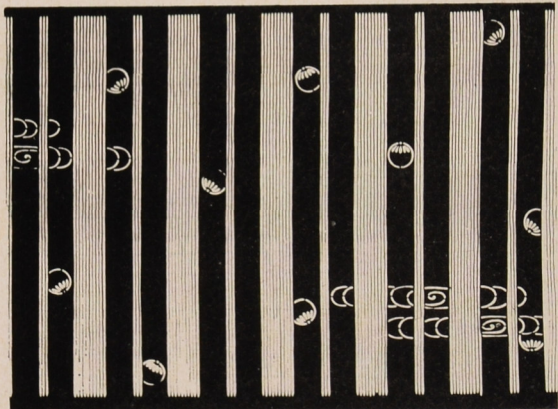


e) stripes representing
bamboo blind

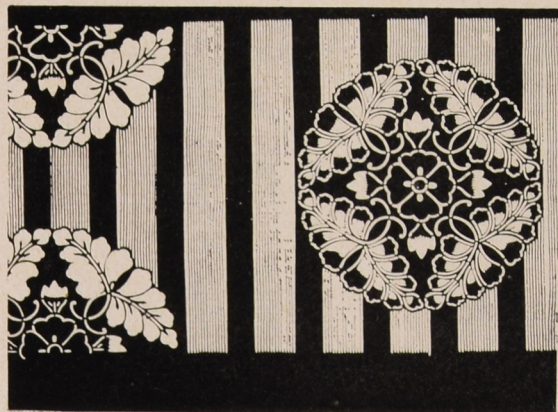
- 450 Type: *jizomari*
Bamboo blind and floral roundels
Technique: *hikibori, tsukibori; itoire*
23,8 × 41,1 cm (14 cm)
Inv. No. A 10.096



- 451 Type: *jizomari*
Begonia behind bamboo blind
Technique: *hikibori, tsukibori; itoire*
22,3 × 40 cm (12,7 cm)
Inv. No. A 10.954

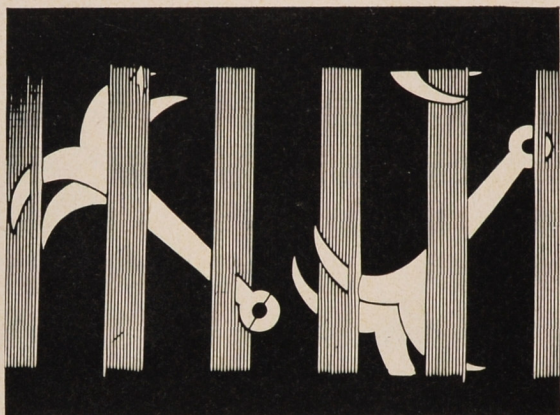


- 452 Type: *jizomari*
Balls and waves behind bamboo blind
Technique: *hikibori, tsukibori; itoire*
24,7 × 41,2 cm (15 cm)
Inv. No. A 10.202

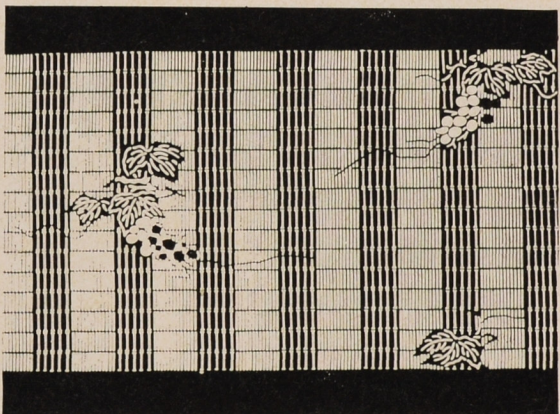


- 453 Type: *jizomari*
Floral medallions against stripes
Technique: *hikibori, tsukibori; itoire*
24,2 × 40,6 cm (15 cm)
Inv. No. A 10.128

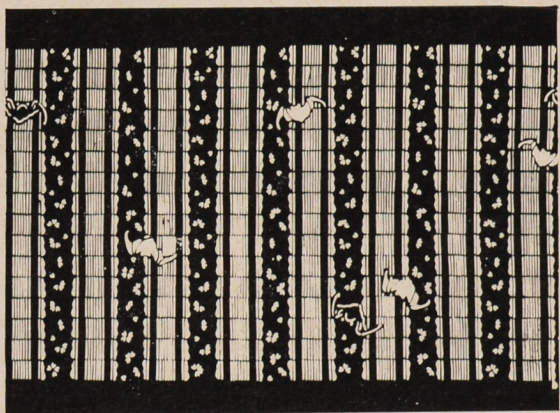
- 454 Type: *jizomari*
 Anchors and bamboo blind
 Technique: *hikibori, tsukibori; itoire*
 25,5 × 41 cm (14,6 cm)
 Inv. No. A 10.154



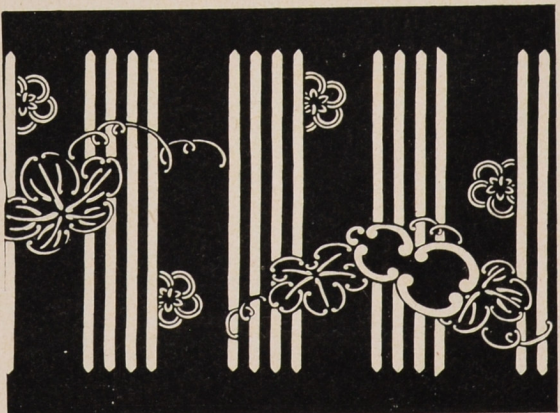
- 455 Type: *jizomari*
 Vine against bamboo blind
 Technique: *tsukibori, ichimaizuki, dōgubori*
 25,7 × 41 cm (12 cm)
 Inv. No. A 10.054

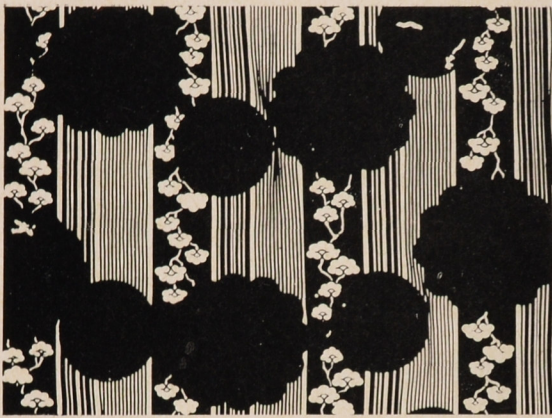


- 456 Type: *jizomari*
 Bats against bamboo blind and sakura blossoms
 Technique: *ichimaizuki, dōgubori, tsukibori*
 16,1 × 41,9 cm (13,2 cm)
 Inv. No. A 10.203



- 457 Type: *jizomari*
 Gourd composed of handles (*kan*)
 Technique: *hikibori, tsukibori; itoire*
 24,6 × 41 cm (14,1 cm)
 Inv. No. A 10.167

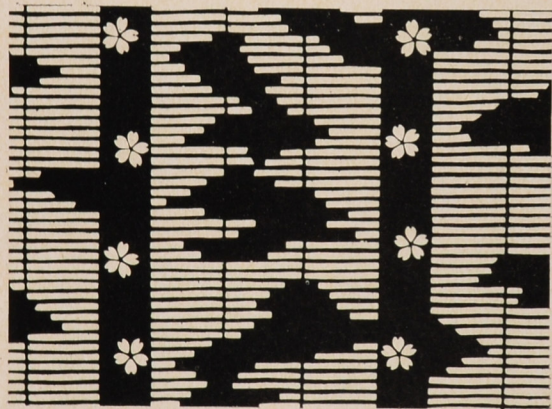




458 Type: *jizomari*
 Silhouettes of flowers against bamboo
 blind and pine
 Technique: *tsukibori*
 32 X 40,8 cm (22 cm)
 Inv. No. A 10.493



459 Type: *jizomari*
 Silhouettes of fruits (?) against
 bamboo blind
 Technique: *tsukibori*
 30,9 X 41,7 cm (21 cm)
 Inv. No. A 10.364



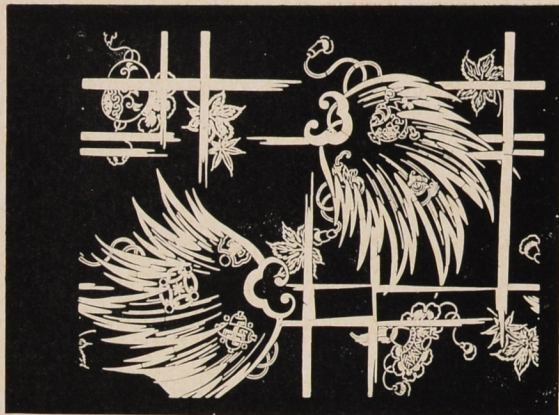
460 Type: *jizomari*
 Bamboo blind, clouds, *sakura* blossoms
 Technique: *tsukibori, dōgubori*
 14 X 19,5 cm (11,2 cm)
 Inv. No. 35.502

f) "fence" patterns

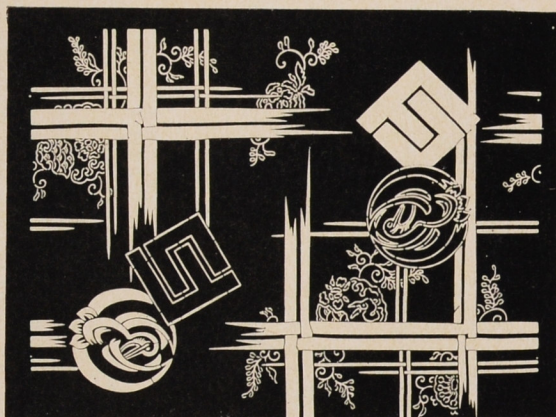


461 Type: *jizomari*
 Weeping willow and bats against fence
 Technique: *tsukibori; itoire*
 40,7 X 54,3 cm (33,2 cm)
 Inv. No. A 10.626

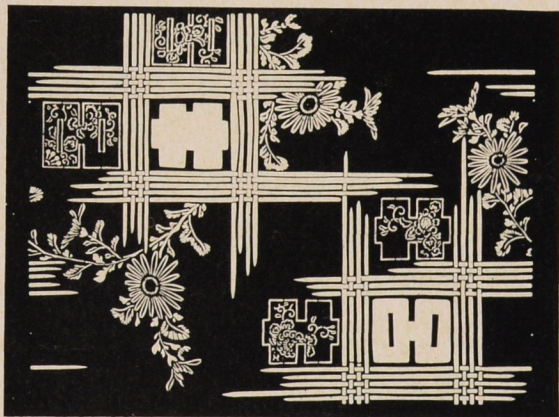
- 462 Type: *jizomari*
 Good omen symbols and maple leaves
 against fence
 Technique: *tsukibori*; *itoire*
 40 × 54 cm (33,3 cm)
 Inv. No. A 10.613



- 463 Type: *jizomari*
 Fence, *mon*, *genjikō*, *karakusa*, *karahana*,
seigaiha, *fujī*, peonies
 Technique: *tsukibori*; *itoire*
 40,2 × 54,3 cm (31,8 cm)
 Inv. No. A 10.693

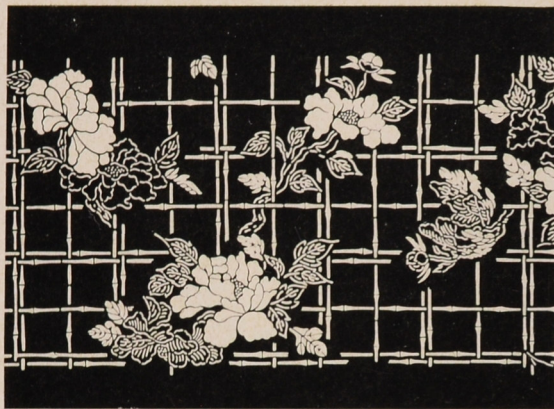


- 464 Type: *jizomari*
Kikugorō pattern: chrysanthemum
 (*kiku*) at a fence, syllable "ki",
 character "ro" (4 and 5 bamboo stalks
 correspond to the syllable "ku" /9/ and
 "go" /5/) which gives the name of the
 actor Onoe Kikugorō
 Technique: *tsukibori*, *dōgubori*,
ichimaizuki
 40,3 × 54,1 cm (32,3 cm)
 Inv. No. A 10.688

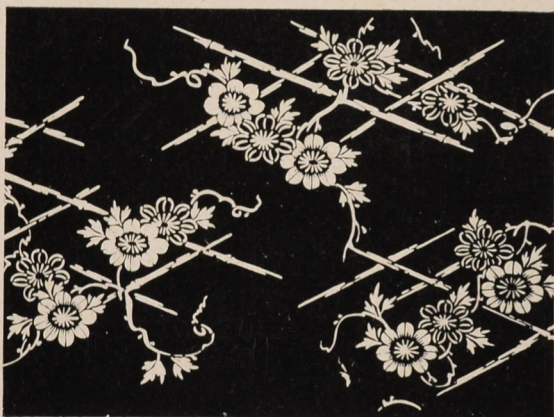


- 465 Type: *jizomari*
 Fence, blooming plum (*ume*), snow
 crystals enclosing *karahana* and
 key fret motif
 Technique: *tsukibori*; *itoire*
 41 × 54,5 cm (33 cm)
 Inv. No. A 10.686





466 Type: *jizomari*
 Bamboo fence and peony
 Technique: *tsukibori*; *itoire*
 25,1 × 41,3 cm [13,8 cm]
 Inv. No. A 10.161



467 Type: *jizomari*
 Bamboo fence and clematis
 Technique: *tsukibori*
 30,2 × 40,7 cm [19,4 cm]
 Inv. No. A 10.488

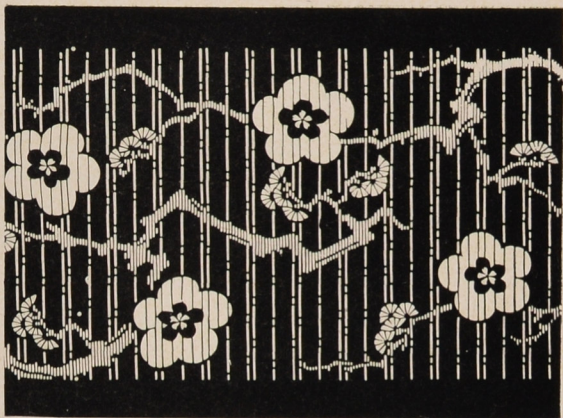


468 Type: *jizomari*
kikkō medallions enclosing *karahana*
 and wisteria against bamboo fence
 Technique: *tsukibori*, *ichimaizuki*; *itoire*
 25,8 × 43 cm [16,9 cm]
 Inv. No. A 10.239



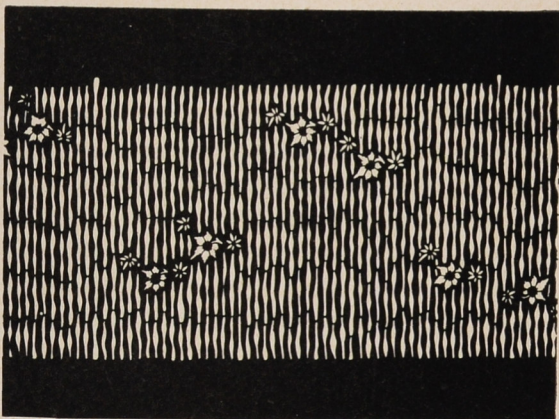
469 Type: *jizomari*
 Clematis against bamboo fence;
kasuri effect
 Technique: *tsukibori*, *dōgubori*
 25,5 × 41,3 cm [14,2 cm]
 Inv. No. A 10.192

470 Type: *jizomari*
shōchikubai: plum and pine against
 bamboo fence
 Technique: *tsukibori*, *ichimaizuki*
 25,2 × 41 cm [14,3 cm]
 Inv. No. A 10.288

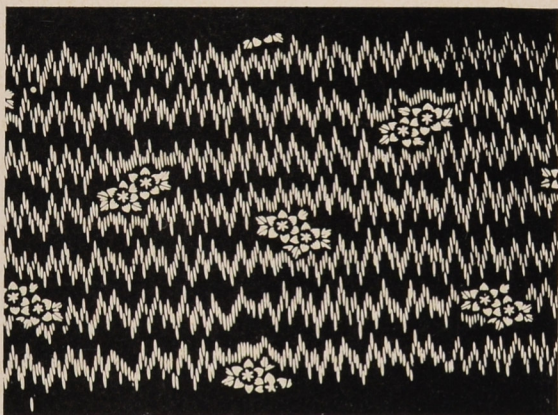


g) background composed
 of irregular stripes
 (*yōrō suji*), special optical
 effects

471 Type: *jizomari*
 Maple leaves against *yōrō* stripes
 Technique: *tsukibori*
 24,1 × 41 cm [13,1 cm]
 Inv. No. A 10.143

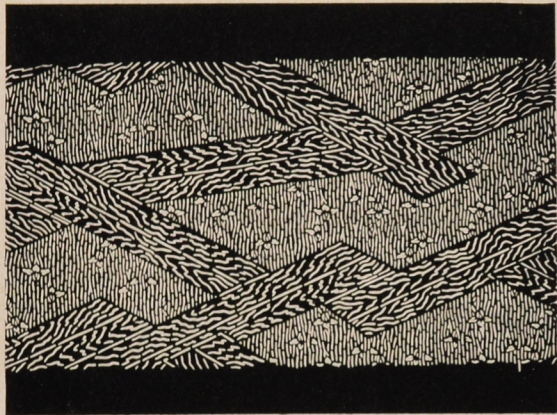


472 Type: *jizomari*
 Clematis against irregular zigzag
 stripes; *kasuri* effect
 Technique: *tsukibori*
 25,6 × 42,2 cm [13,4 cm]
 Inv. No. A 10.303



473 Type: *jizomari*
 Twigs against fine "notched" stripes
 Technique: *tsukibori*
 30,8 × 39,3 cm [21,3 cm]
 Inv. No. A 10.489

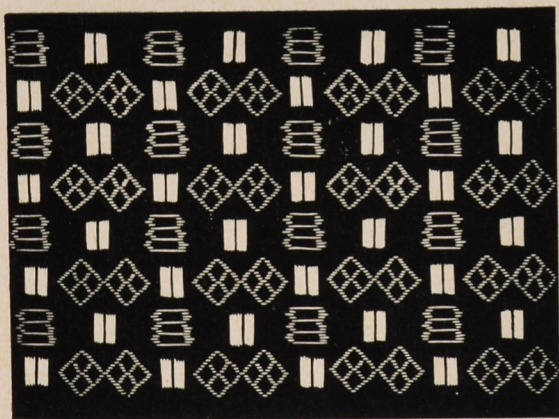




474 Type: *jizomari*
Yatsunashi pattern ("broken" bridge
 over shallow water and irises)
 Technique: *tsukibori*
 24,7 × 41,5 cm (11,8 cm)
 Inv. No. A 10.305

6. Patterns imitating other textile techniques,
 especially *kasuri* and *shibori* techniques

a) blurred outlines

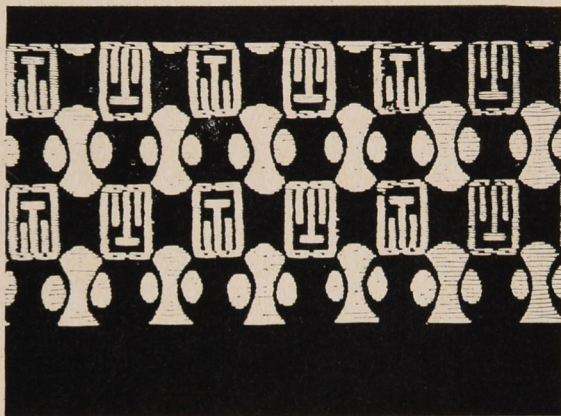


475 Type: *jizomari*
waribishi (divided lozenges) and
 "bricks"; *kasuri* effect
 Technique: *tsukibori*, *ichimaizuki*
 33 × 41,5 cm (23 cm)
 Inv. No. A 10.412



476 Type: *jizomari*
 Double *matsukawabishi* and crosses;
kasuri effect
 Technique: *tsukibori*, *ichimaizuki*
 35,6 × 41,3 cm (13 cm)
 Inv. No. A 10.302

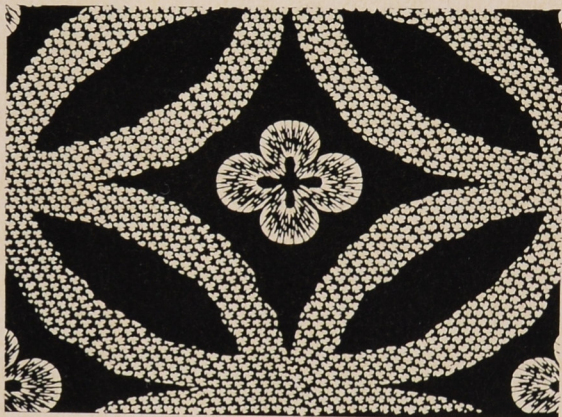
- 477 Type: *jizomari*
fundō and character ?; *kasuri* effect
 Technique: *tsukibori*, *ichimaizuki*
 39,8 × 24,2 cm (14,3 cm)
 Inv. No. A 3.698



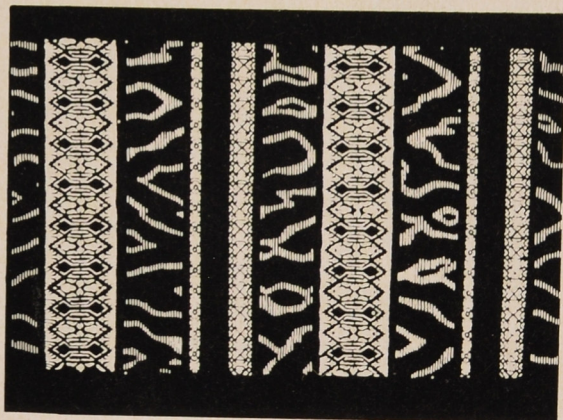
- 478 Type: *jizomari*
 Cobweb pattern in *shibori* effect against
 "bubbles" composed of handles (*kan*)
 Technique: *tsukibori*, *dōgubori*
 24,4 × 40,9 cm (14,3 cm)
 Inv. No. A 10.255



- 479 Type: *jizomari*
 Large *shippō* enclosing *karahana*
 pattern; *shibori* effect
 Technique: *dōgubori*, *tsukibori*
 32 × 40,7 cm (21,8 cm)
 Inv. No. A 10.380

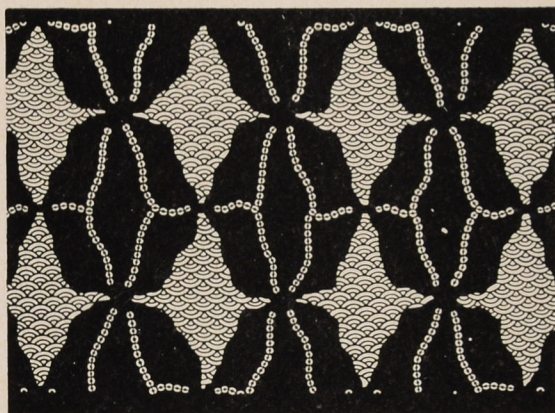


- 480 Type: *jizomari*
 Stripes composed of regular geometric
 and floral motifs. Imitation of woven
 fabric?
 Technique: *ichimaizuki*, *tsukibori*,
kiribori
 29,2 × 38,2 cm (20,1 cm)
 Inv. No. A 10.454





- 481 Type: *jizomari*
 "Lightning" pattern in positive and negative representation; *kasuri* effect
 Technique: *tsukibori, dōgubori*
 31,3 X 41 cm (17,4 cm)
 Inv. No. A 10.494



- 482 Type: *jizomari*
 Deformed *kikkō* pattern enclosing lozenges with *seigaiha* motif; *shibori* effect
 Technique: *ichimaiwa, dōgubori*
 30,4 X 41,5 cm (20,3 cm)
 Inv. No. A 10.381

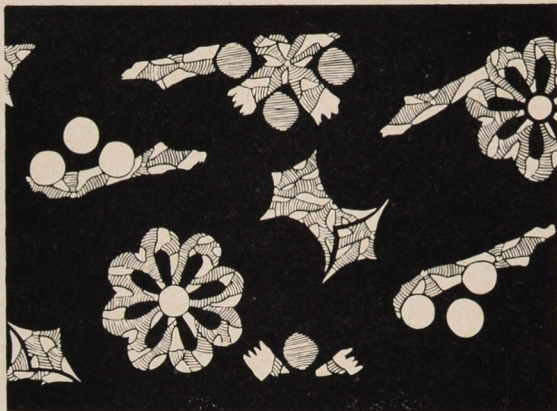


- 483 Type: *jizomari*
 Imitation of woven or embroidered pattern
 Technique: *kiribori, ichimaizuki, dōgubori*
 26,2 X 41,5 cm (13,6 cm)
 Inv. No. A 10.307



- 484 Type: *jizomari*
 Plum blossoms: outlines formed by fine twigs, centres in the shape of snow crystals
 Technique: *tsukibori, dōgubori*
 32,9 X 40,3 cm (22 cm)
 Inv. No. A 10.584

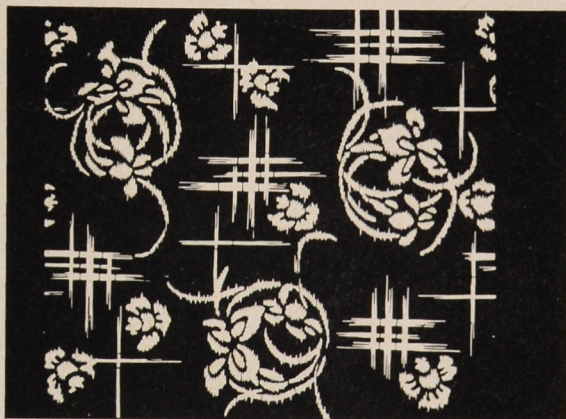
485 Type: *jizomari*
Flowers, crosses, circles, in *shibori* effect
Technique: *tsukibori*
24,7 × 40,7 cm (13,5 cm)
Inv. No. A 10.206



486 Type: *jizomari*
Bamboo in *shibori* effect
Technique: *tsukibori*, *ichimaizuki*
32,1 × 40,8 cm (21,7 cm)
Inv. No. A 10.095



487 Type: *jizomari*
Roundels of irises, sparrows and
bamboo fence; *kasuri* effect
Technique: *tsukibori*
41,3 × 50,7 cm (34 cm)
Inv. No. A 10.562

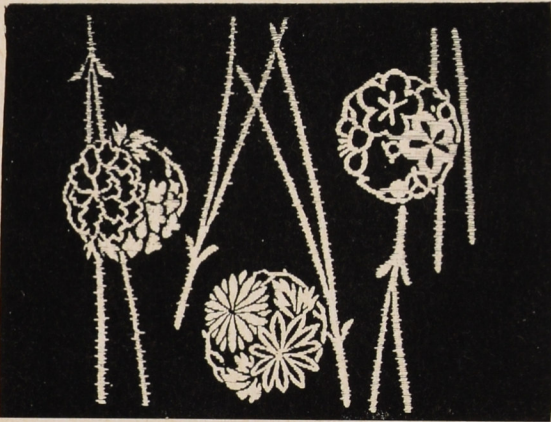


488 Type: *jizomari*
Wild carnations (*nadeshiko*) and
haze in *kasuri* effect
Technique: *tsukibori*
41,6 × 51,5 cm (35 cm)
Inv. No. A 10.680





- 489 Type: *jizomari*
 Chrysanthemum, pampas grass and
 Chinese bellflower (*kikyō*) in *kasuri*
 effect
 Technique: *tsukibori*, *hikibori*
 "Bizenya" — trader's mark
 41,7 × 51,5 cm [33,3 cm]
 Inv. No. A 10.674



- 490 Type: *jizomari*
 Roundels of chrysanthemum flowers,
 plum blossoms and peonies, pine
 needles; *kasuri* effect
 Technique: *tsukibori*
 40,7 × 47,1 cm [31,8 cm]
 Inv. No. A 10.717



- 491 Type: *jizomari*
 Carps in waves; *kasuri* effect
 Technique: *tsukibori*; *itoire*
 40,8 × 50,3 cm [31,3 cm]
 Inv. No. A 10.732

b) blurred outlines formed
 by "notched chains"

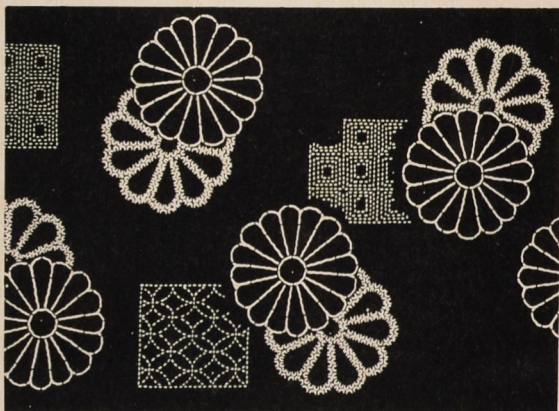


- 492 Type: *jizomari*
 Symbols of good luck enclosing
 geometrical and natural motifs;
kasuri effect
 Technique: *dōgubori*, *tsukibori*,
ichimaizuki
 30,3 × 38,6 cm [20,4 cm]
 Inv. No. A 10.462

- 493 Type: *jizomari*
 Carps in waves; *kasuri* effect
 Technique: *tsukibori*, *dōgubori*
 31 × 41 cm (20,8 cm)
 Inv. No. A 10.634



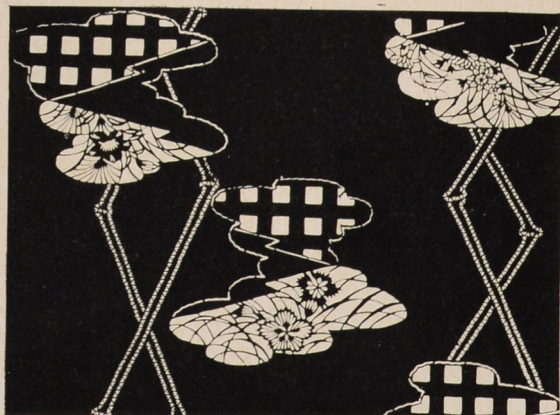
- 494 Type: *jizomari*
 Conventionalized chrysanthemum
 flowers, squares with *inazuma* and
shippō pattern
 Technique: *tsukibori*, *dōgubori*
 26,7 × 41,7 cm (17,5 cm)
 Inv. No. A 10.185

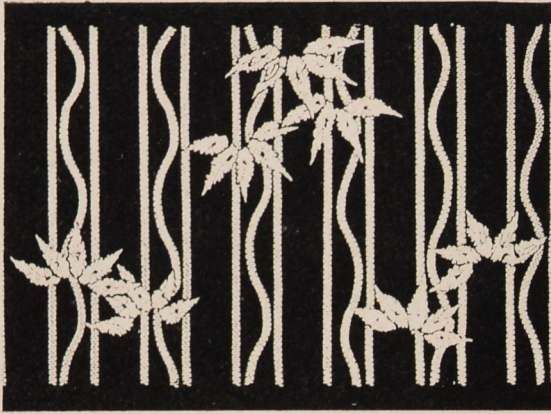


- 495 Type: *jizomari*
 Poles (?) and stripes of drying fabric;
kasuri effect
 Technique: *tsukibori*, *dōgubori*
 30,2 × 41,3 cm (20,2 cm)
 Inv. No. A 10.417



- 496 Type: *jizomari*
 Bamboo imitating bird's feet and clouds
 enclosing flowers and square lattice;
kasuri effect
 Technique: *dōgubori*, *tsukibori*,
ichimaizuki
 30 × 40,2 cm (21 cm)
 Inv. No. A 10.585

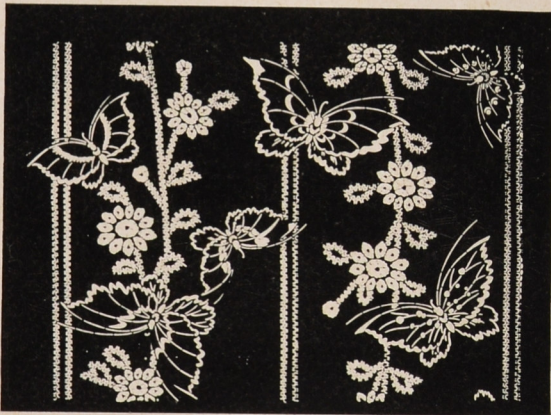




497 Type: *jizomari*
 Bamboo leaves against straight and wavy lines; *kasuri* and *shibori* effect
 Technique: *dōgubori*, *tsukibori*
 31,4 × 42,8 cm [21,2 cm]
 Inv. No. A 10.335



498 Type: *jizomari*
 Flowers and scrolls; *kasuri* and *shibori* effect
 Technique: *dōgubori*, *tsukibori*
 30,1 × 42,1 cm [22,2 cm]
 Inv. No. A 10.603



499 Type: *jizomari*
 Stripes, twigs and butterflies; *kasuri* and *shibori* effect
 Technique: *tsukibori*, *dōgubori*
 31,4 × 40,2 cm [22,3 cm]
 Inv. No. A 10.405



500 Type: *jizomari*
 Roundels and squares enclosing lobster and waves against *jundō*; *kasuri* effect
 Technique: *dōgubori*, *tsukibori*
 29,8 × 41,6 cm [22,2 cm]
 Inv. No. A 10.631

- 501 Type: *jizomari*
sakura and *kikkō*, *karahana*; *kasuri*
 and *shibori* effect
 Technique: *dōgubori*, *tsukibori*
 32 × 40,3 cm (20,3 cm)
 Inv. No. A 10.388



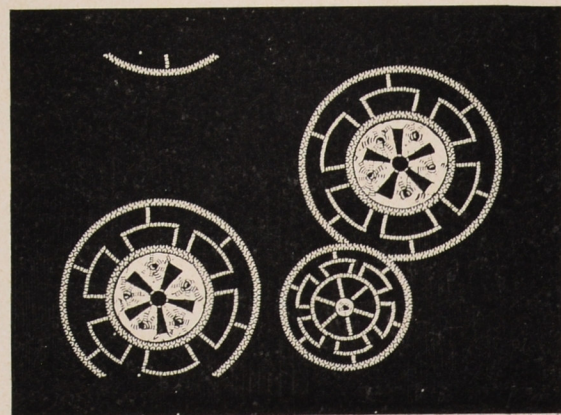
- 502 Type: *jizomari*
 Wild geese and *matsukawabishi*
 enclosing flowers, crosses; *kasuri* and
shibori effect
 Technique: *dōgubori*, *tsukibori*, *kiribori*
 31,6 × 41,2 cm (21,3 cm)
 Inv. No. A 10.071

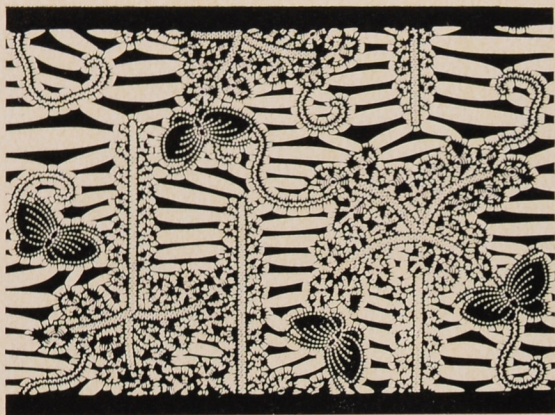


- 503 Type: *jizomari*
seigaiha pattern and Chinese bellflower
 in *kasuri* and *shibori* effect
 Technique: *tsukibori*, *dōgubori*
 40,8 × 46,1 cm (35,2 cm)
 Inv. No. A 10.021



- 504 Type: *jizomari*
Genji wheels in *kasuri* and *shibori* effect
 Technique: *dōgubori*, *tsukibori*
 30 × 40,2 cm (20,4 cm)
 Inv. No. A 10.409

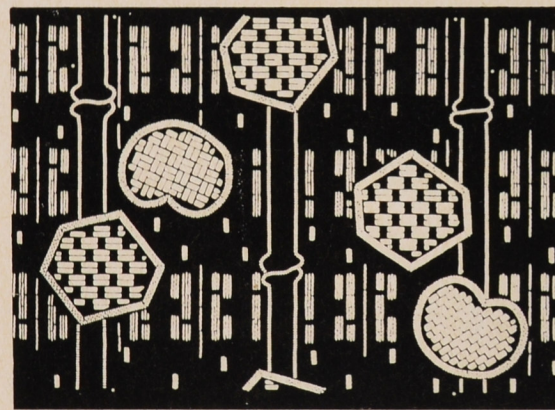




- 505 Type: *jizomari*
 Blooming tree and butterflies on striped
 ground; *kasuri* and *shibori* effect
 Technique: *dōgubori*, *tsukibori*, *kiribori*
 33 × 41 cm [22 cm]
 Inv. No. A 10.623



- 506 Type: *jizomari*
jukurasuzume (sparrows) in *kasuri* and
shibori effect
 Technique: *dōgubori*, *tsukibori*
 32,3 × 41,7 cm [22,1 cm]
 Inv. No. A 10.478

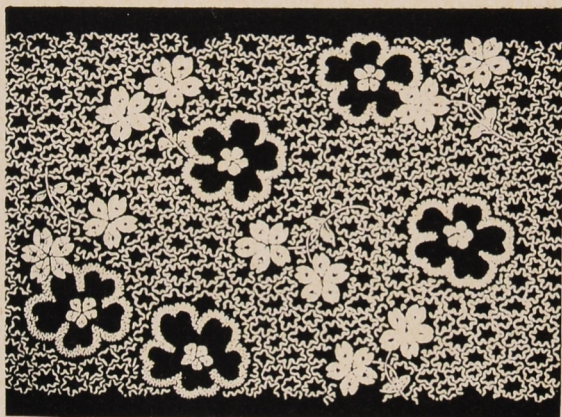


- 507 Type: *jizomari*
 Bamboo and medallions with geometrical
 patterns on striped ground; *kasuri* effect
 Technique: *tsukibori*, *dōgubori*
 32 × 41,5 cm [22,3 cm]
 Inv. No. A 10.452



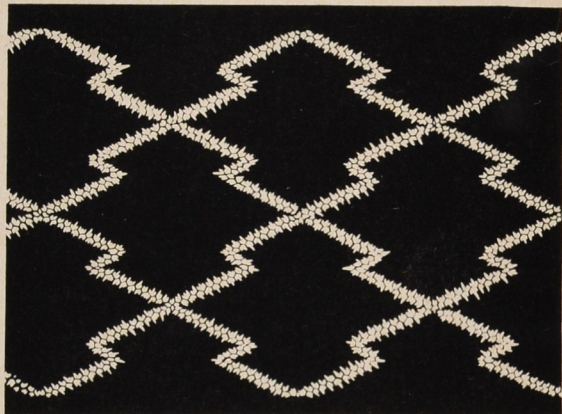
- 508 Type: *jizomari*
 Conventionalized flower on striped
 ground
 Technique: *dōgubori*, *tsukibori*
 32 × 40 cm [22,2 cm]
 Inv. No. A 10.318

509 Type: *jizomari*
sakura flowers and twigs in *kasuri* and
shibori effect
 Technique: *dōgubori*, *tsukibori*
 31,3 × 40,3 cm (21,3 cm)
 Inv. No. A 10.466

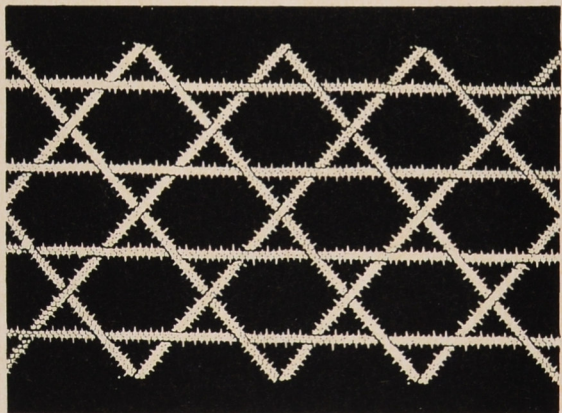


c) blurred outlines produced
 by small "icicles"

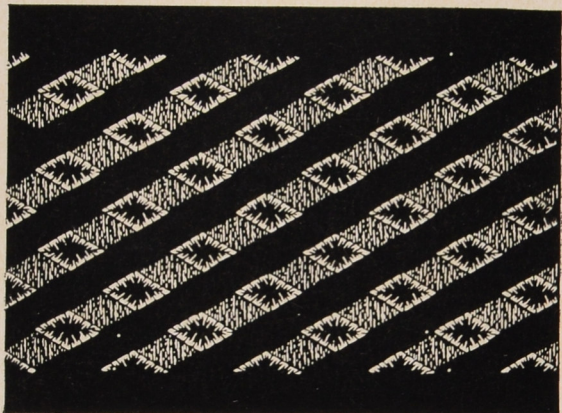
510 Type: *jizomari*
matsukawabishi in *kasuri* effect
 Technique: *tsukibori*
 29,1 × 40,5 cm (18,5 cm)
 Inv. No. A 10.582

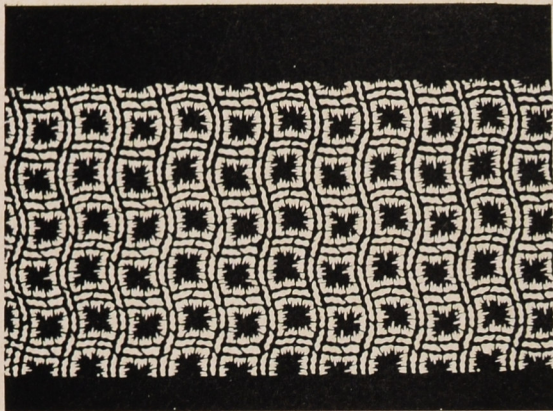


511 Type: *jizomari*
 Basketwork (*kagome*) in *kasuri* effect
 Technique: *tsukibori*, *dōgubori* (?)
 29 × 40 cm (20,2 cm)
 Inv. No. A 10.461

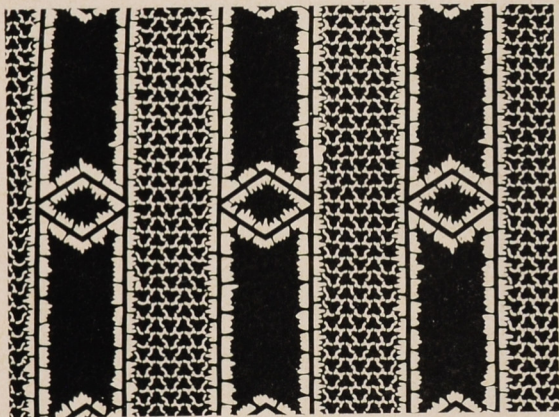


512 Type: *jizomari*
 Lozenge stripes and blotches
 in *kasuri* effect
 Technique: *tsukibori*
 30,2 × 41,1 cm (19,5 cm)
 Inv. No. A 10.437

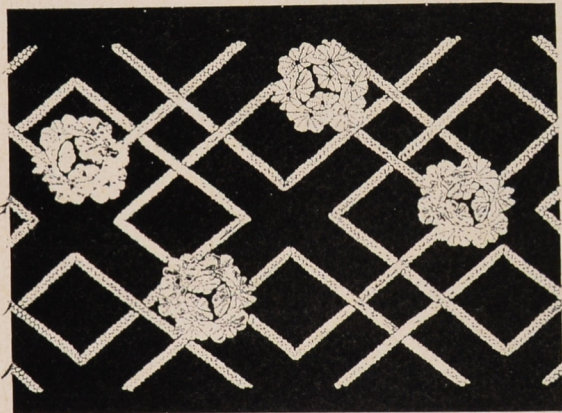




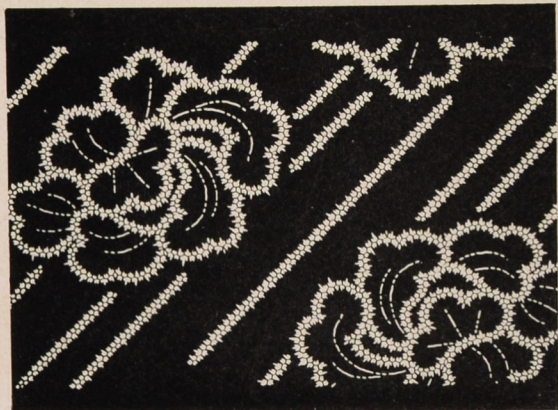
513 Type: *jizomari*
 Wavy lattice enclosing blotches
 in *shibori* effect
 Technique: *tsukibori*
 27,8 × 43 cm (17,5 cm)
 Inv. No. A 10.125



514 Type: *jizomari*
 Bamboo stripes and tiny
Bishamon-kikkō pattern
 Technique: *tsukibori*
 33,2 × 39,6 cm (21,4 cm)
 Inv. No. A 10.622



515 Type: *jizomari*
 Floral medallions against lozenge
 diaper; *kasuri* and *shibori* effect
 Technique: *tsukibori*, *dōgubori*
 30,3 × 41,2 cm (21,3 cm)
 Inv. No. A 10.371

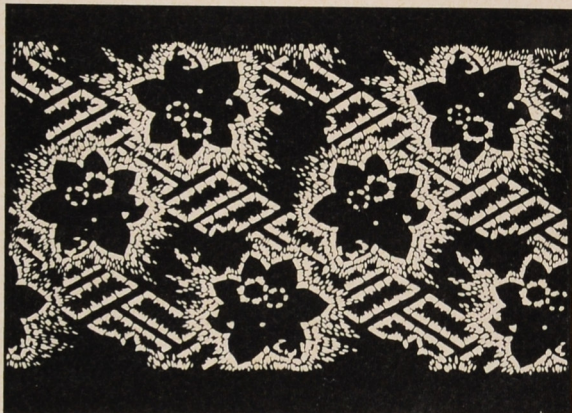


516 Type: *jizomari*
 Peonies against oblong lines;
kasuri effect
 Technique: *dōgubori*, *tsukibori*
 28,6 × 40,7 cm (19,1 cm)
 Inv. No. A 10.389

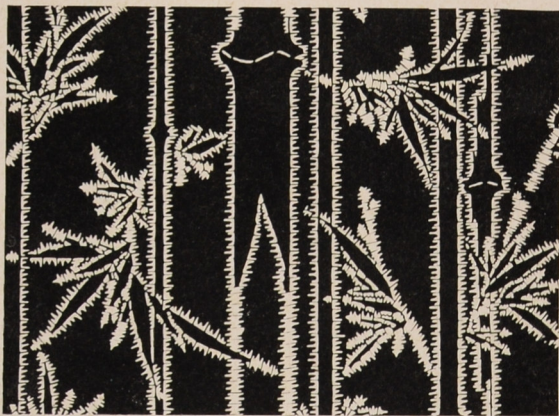
- 517 Type: *jizomari*
 Plum blossoms and tiny flowers against
 oblong stripes; *kasuri* effect
 Technique: *tsukibori*, *dōgubori*
 28,2 × 40,3 cm (18,4 cm)
 Inv. No. A 10.358



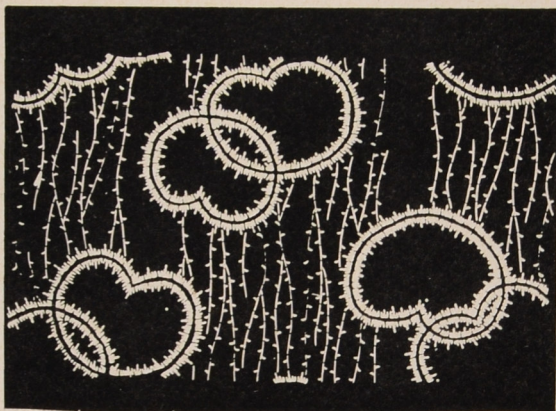
- 518 Type: *jizomari*
 Floral medallions with small flowers
 on partial *ajiro* ground; *kasuri* effect
 Technique: *tsukibori*
 31 × 41,3 cm (20,7 cm)
 Inv. No. A 10.477



- 519 Type: *jizomari*
 Bamboo in *kasuri* effect
 Technique: *tsukibori*
 33 × 41,5 cm (23,7 cm)
 Inv. No. A 10.078

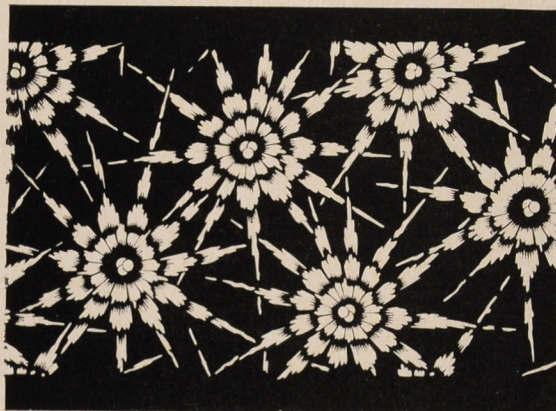


- 520 Type: *jizomari*
 Lotus leaves and algae; *kasuri* effect
 Technique: *tsukibori*, *dōgubori*
 29,7 × 40,3 cm (20,4 cm)
 Inv. No. A 10.314





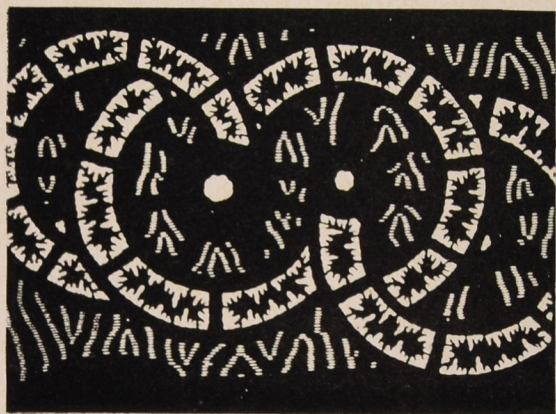
521 Type: *jizomari*
 Conventionalized flower; *kasuri* effect
 Technique: *tsukibori*
 29,5 × 39,7 cm [22,4 cm]
 Inv. No. A 10.598



522 Type: *jizomari*
 Pine needles arranged in star-like
 patterns; *kasuri* effect
 Technique: *tsukibori*
 24,6 × 41 cm [15 cm]
 Inv. No. A 10.130



523 Type: *jizomari*
 Genji wheels against tiny floral design
 in *kasuri* effect
 Technique: *tsukibori*
 31,1 × 37,8 cm [21,7 cm]
 Inv. No. A 10.601

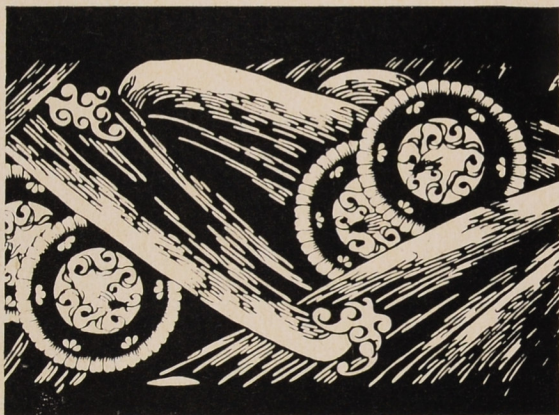


524 Type: *jizomari*
 Interlocking circles against wood-grain
 ground; *kasuri* effect
 Technique: *tsukibori*, *ichimaizuki*
 32 × 40,7 cm [20,5 cm]
 Inv. No. A 10.354

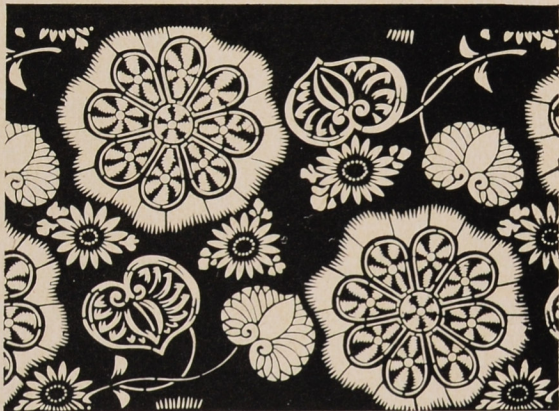
- 525 Type: *jizomari*
 Medallions with pine needles against
ichinomoyō design
 Technique: *tsukibori*
 31,2 × 40,8 cm (21 cm)
 Inv. No. A 10.604



- 526 Type: *jizomari*
 Drums with dragon motif in waves
 Technique: *tsukibori*; *itoire*
 23 × 39,7 cm (13 cm)
 Inv. No. A 10.224



- 527 Type: *jizomari*
 Conventionalized flowers,
 chrysanthemums, *aoi* leaves;
shibori effect
 Technique: *tsukibori*
 24,6 × 40 cm (14,3 cm)
 Inv. No. A 10.247



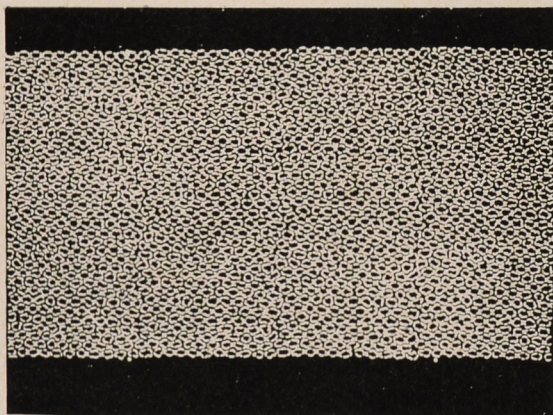
- 528 Type: *jizomari*
 Fan papers with floral motifs,
 butterflies and *sakura* blossoms;
kasuri and *shibori* effect
 Technique: *tsukibori*, *dōgubori*; *itoire*
 25,5 × 40,8 cm (14,5 cm)
 Inv. No. A 10.165



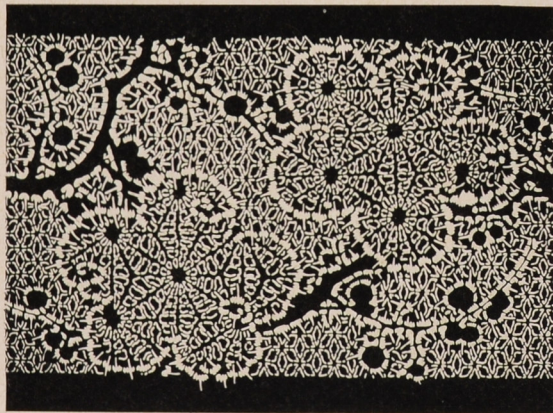


- 529 Type: *jizomari*
 Shells against "bubbles" composed
 of handles (*kan*)
 Technique: *ichimaiwa*, *tsukibori*
 25,6 × 41,1 cm (14,4 cm)
 Inv. No. A 10.268

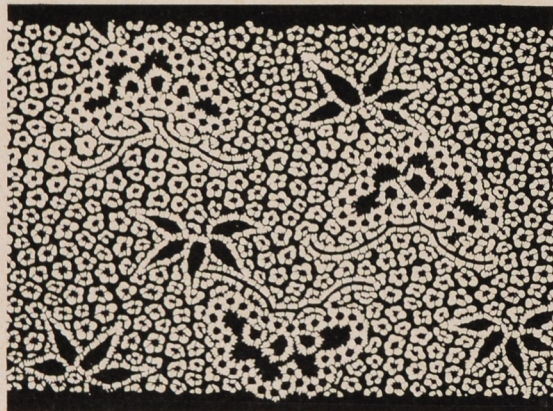
d) "chain" pattern forming
 part or background of the
 design



- 530 Type: *jizomari*
 Irregular "chain" pattern
 Technique: *tsukibori*
 29,3 × 39,3 cm (18,6 cm)
 Inv. No. A 10.444



- 531 Type: *jizomari*
 Large plum blossoms and plum twigs
 against *asanoha* pattern
 Technique: *tsukibori*
 31 × 40,9 cm (21 cm)
 Inv. No. A 10.435



- 532 Type: *jizomari*
shōchikubai design (bamboo, pine and
 plum blossoms)
 Technique: *tsukibori*
 32 × 40,3 cm (22,1 cm)
 Inv. No. A 10.328

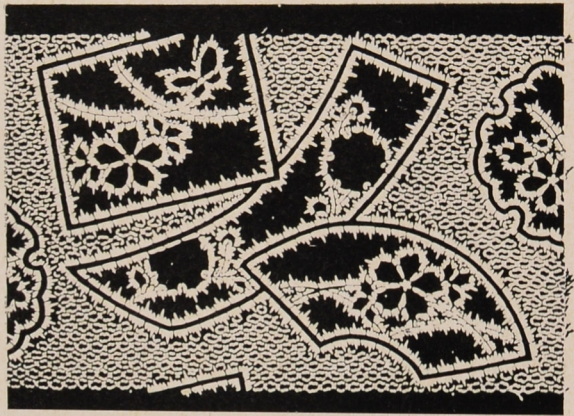
533a Type: *jizomari*

Fan papers and papers for writing
poems, snow crystal medallions
enclosing floral motifs

Technique: *tsukibori*

31 × 40,6 cm (20,8 cm)

Inv. No. A 10.339

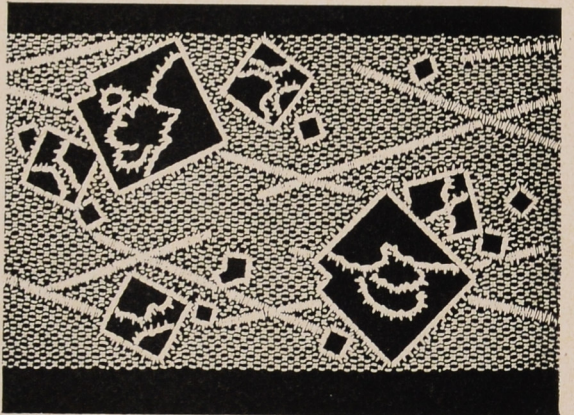


533b Type: *jizomari*

The same pattern as 533a

29 × 41,2 cm (21,3 cm)

Inv. No. A 10.470



534 Type: *jizomari*

Straight lines and squares with abstract
pattern; *kasuri* effect

Technique: *tsukibori*

30,2 × 41,3 cm (20,1 cm)

Inv. No. A 10.369

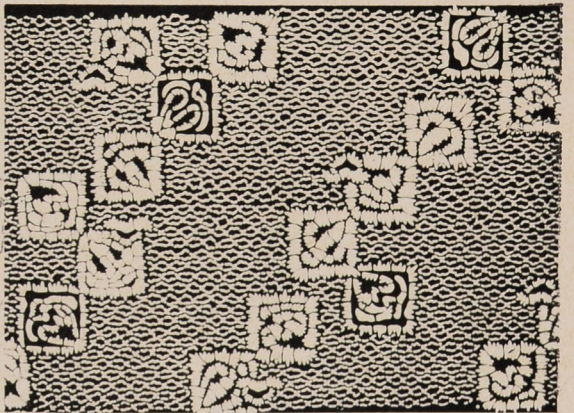
535 Type: *jizomari*

Squares enclosing shells (?);
kasuri effect

Technique: *tsukibori*

30,3 × 41,3 cm (19,8 cm)

Inv. No. 35.517



536 Type: *jizomari*

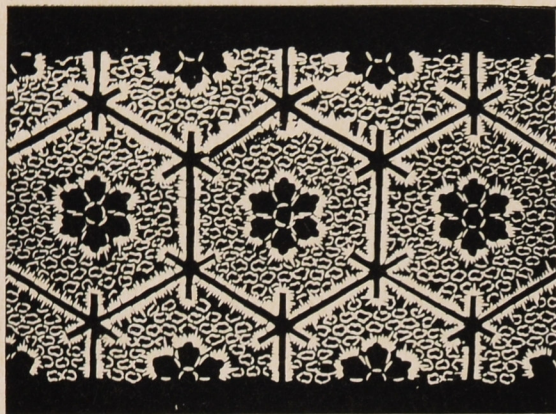
futatsu-tomoe crests, sparrow, bamboo
leaves; *kasuri* effect

Technique: *tsukibori*

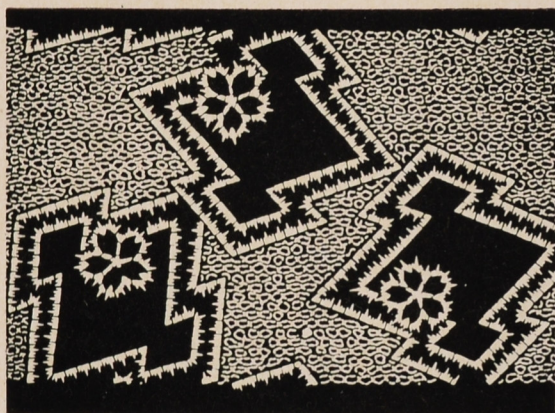
30,6 × 42,3 cm (19,4 cm)

Inv. No. A 10.104





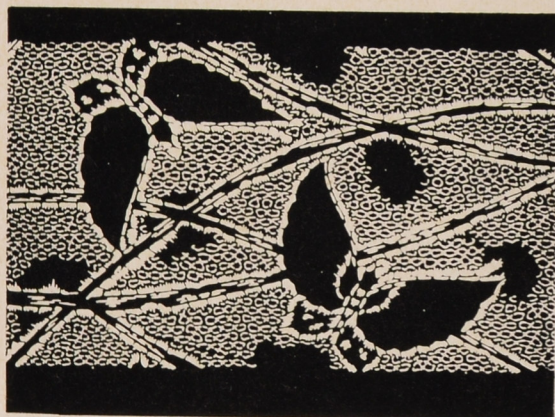
537 Type: *jizomari*
kikkō pattern enclosing flower;
kasuri effect
 Technique: *tsukibori*
 28,7 × 39,6 cm (29,2 cm)
 Inv. No. A 10.465



538 Type: *jizomari*
matsukawabishi and *sakura* blossom;
kasuri effect
 Technique: *tsukibori*
 31,8 × 41 cm (21,2 cm)
 Inv. No. A 10.450

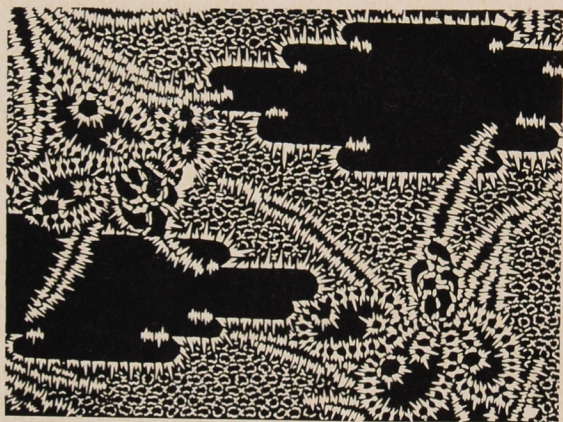


539 Type: *jizomari*
 Plovers over waves and *sakura* blossoms;
kasuri effect
 Technique: *tsukibori*
 31,2 × 41,6 cm (21,2 cm)
 Inv. No. A 10.449



540 Type: *jizomari*
 Stalks (?) and butterflies in *kasuri* effect
 Technique: *tsukibori*
 29 × 41,2 cm (19,3 cm)
 Inv. No. A 10.334

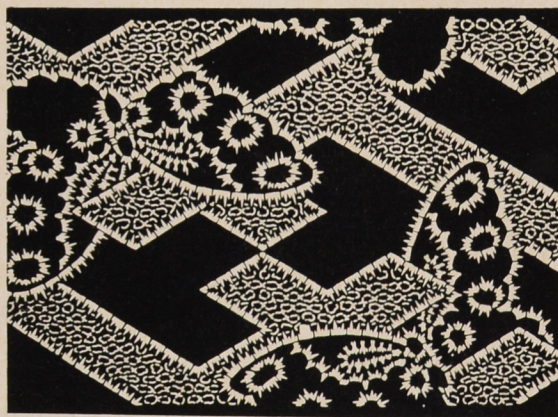
- 541 Type: *jizomari*
 Irises and clouds in *kasuri* effect
 Technique: *tsukibori*
 31,2 × 40,2 cm (20,8 cm)
 Inv. No. A 10.581



- 542 Type: *jizomari*
 Fence and conventionalized flowers;
kasuri effect
 Technique: *tsukibori*
 34 × 41,5 cm (21,5 cm)
 Inv. No. A 10.400



- 543 Type: *jizomari*
 Key fret and butterflies in *kasuri* effect
 Technique: *tsukibori*
 31,5 × 40,5 cm (21,3 cm)
 Inv. No. A 10.398

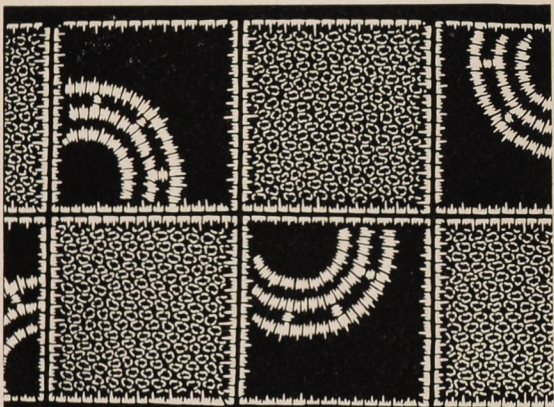


- 544 Type: *jizomari*
Yajirōbei doll and gourd
 Technique: *tsukibori*, *kiribori*, *dōgubori*
 30,6 × 40,2 cm (19,8 cm)
 Inv. No. 35.516





- 545 Type: *jizomari*
matsukawabishi against *ichinomoyō*
 and *Bishamon-kikkō* patterns
 Technique: *tsukibori*, *kiribori*,
ichimaizuki
 30,3 × 40,6 cm [20,6 cm]
 Inv. No. A 10.365

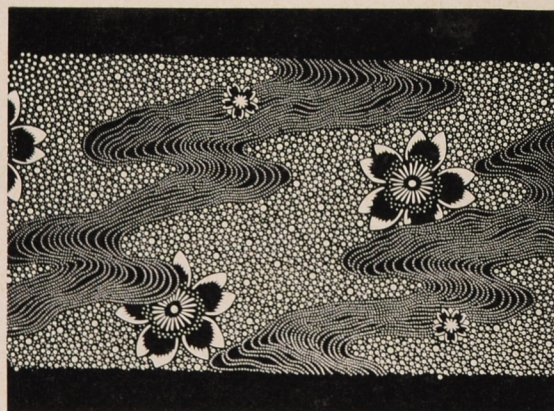


- 546 Type: *jizomari*
 Chequer in *kasuri* effect
 Technique: *tsukibori*
 30,3 × 40,6 cm [20,6 cm]
 Inv. No. A 10.376



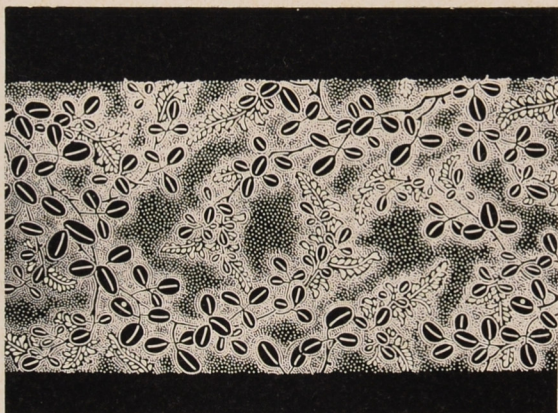
- 547 Type: *jizomari*
 Cranes and pampas grass
 Technique: *tsukibori*, *kiribori*
 31 × 41,2 cm [20,3 cm]
 Inv. No. 35.518

e) patterns on dotted ground

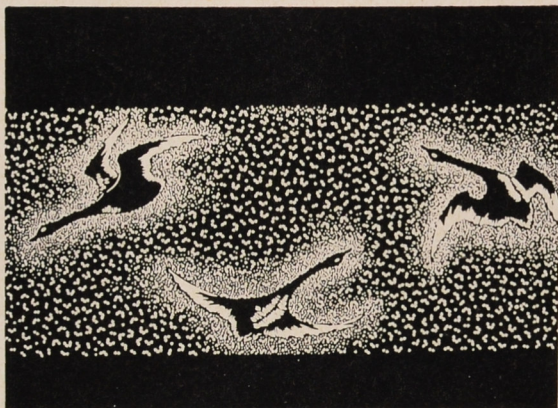


- 548 Type: *jizomari*
Yoshinogawa design: *sakura* blossoms
 and water stream
 Technique: *kiribori*, *tsukibori*, *dōgubori*
 25,7 × 41 cm [14,1 cm]
 Inv. No. A 10.126

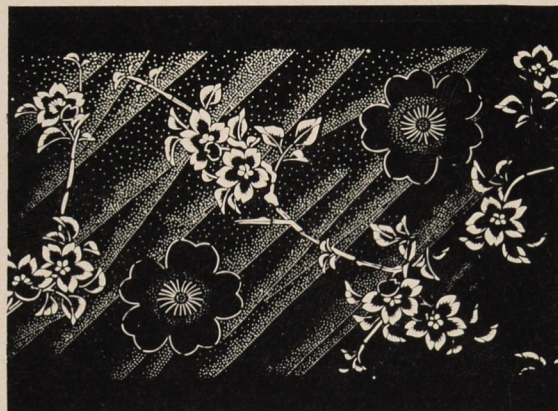
- 549 Type: *jizomari*
hagi on dotted ground
 Technique: *kiribori*, *tsukibori*
 25,6 X 41,1 cm (16,1 cm)
 Inv. No. A 10.064



- 550 Type: *jizomari*
 Flying wild geese against *sakura*
 blossoms
 Technique: *kiribori*, *dōgubori*, *tsukibori*
 25,3 X 41,3 cm (13,8 cm)
 Inv. No. A 10.063

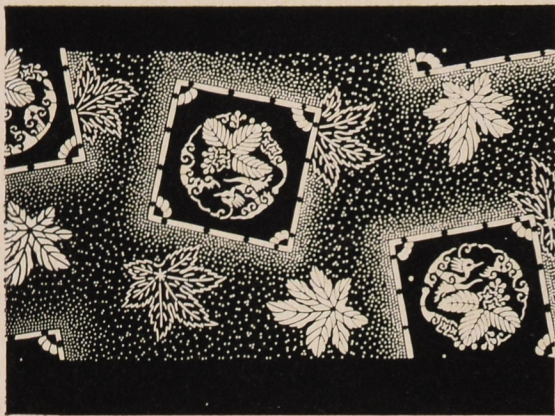


- 551 Type: *jizomari*
sakura blossoms and twigs
 Technique: *kiribori*, *tsukibori*
 24,1 X 41,2 cm (15 cm)
 Inv. No. A 10.140

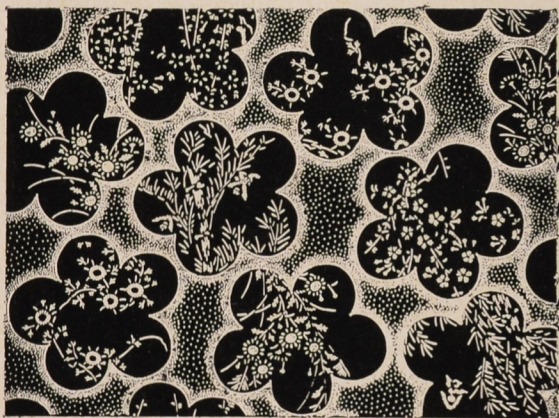


- 552 Type: *jizomari*
shōchikubai, paper cranes and *shippō*
 pattern against dotted ground
 Technique: *kiribori*, *dōgubori*
 28,4 X 40,3 cm (19,6 cm)
 Inv. No. A 10.426





553 Type: *jizomari*
 Plaques with *hōō* and *kiri* roundels
 against maple leaves
 Technique: *tsukibori*, *kiribori*
 25,3 × 41,4 cm (14 cm)
 Inv. No. A 10.168



554 Type: *jizomari*
 Plum-blossom medallions with flower
 and sparrow-and-bamboo motifs
 Technique: *kiribori*, *tsukibori*
 32,3 × 40,3 cm (21,7 cm)
 Inv. No. A 10.085

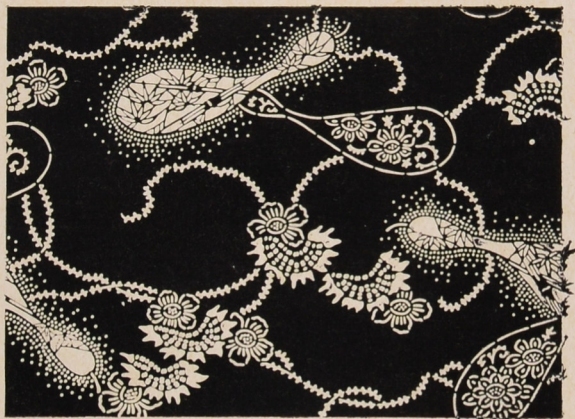


555 Type: *jizomari*
 Chrysanthemum-crane crests
 against "haze"
 Technique: *kiribori*, *tsukibori*; *itoire*
 24,1 × 41 cm (13,3 cm)
 Inv. No. A 10.110



556 Type: *jizomari*
 Large floral medallions in waves with
kiri, *karakusa*, chrysanthemum motifs
 Technique: *kiribori*, *tsukibori*; *itoire*
 25,1 × 40,6 cm (14,8 cm)
 Inv. No. A 10.241

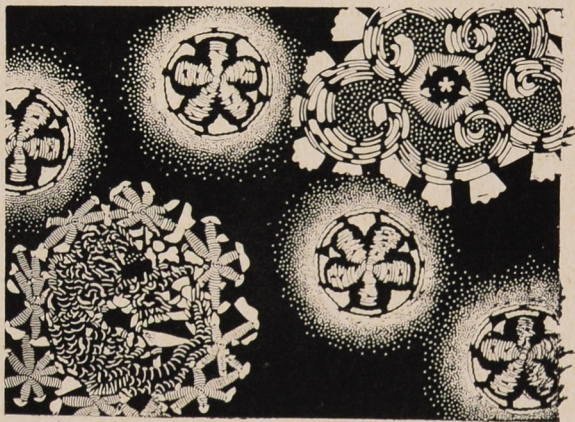
- 557 Type: *jizomari*
 Gourd with bamboo and *karakusa* motifs,
 conventionalized flowers
 Technique: *kiribori*, *tsukibori*, *dōgubori*
 25,8 × 41,3 cm (15,1 cm)
 Inv. No. A 10.272



- 558 Type: *jizomari*
 Maple leaves and papers enclosing grass
 and net motifs
 Technique: *kiribori*, *tsukibori*
 30,2 × 41,5 cm (19 cm)
 Inv. No. A 10.374



- 559 Type: *jizomari*
 Conventionalized flowers and dragon;
shibori effect
 Technique: *kiribori*, *tsukibori*,
ichimaizuki
 33 × 41 cm (22,2 cm)
 Inv. No. A 10.590



- 560 Type: *jizomari*
 sakura blossoms
 Technique: *kiribori*, *tsukibori*, *dōgubori*
 31,5 × 39 cm (23,4 cm)
 Inv. No. A 10.093





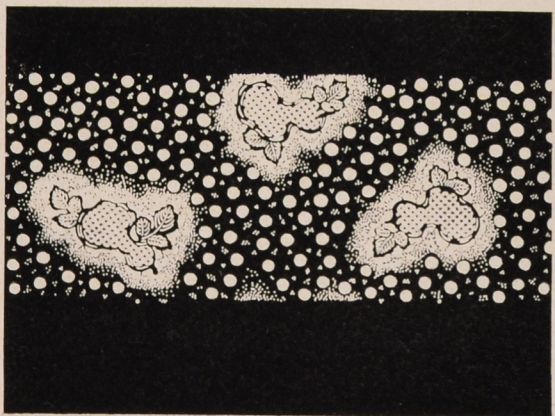
561 Type: *jizomari*
 Sparrows and bamboo
 Technique: *kiribori*, *tsukibori*
 25,4 × 40,8 cm [15,4 cm]
 Inv. No. A 10.032



562 Type: *jizomari*
 Gourd, *yarigasumi* ("haze")
 Technique: *kiribori*, *tsukibori*
 24,6 × 41 cm [14,2 cm]
 Inv. No. A 10.039

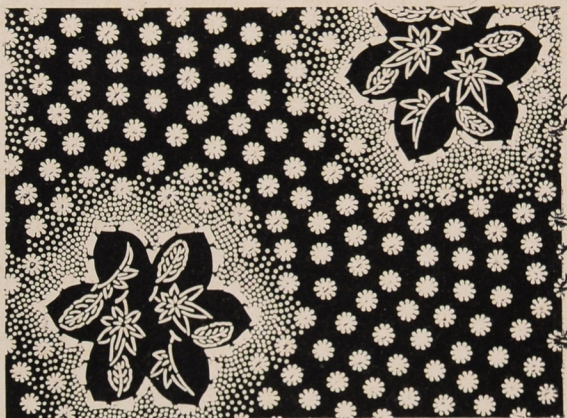


563 Type: *jizomari*
 Large plum blossoms with *yarigasumi*
 against "bubbles" composed of double
 handles (*kan*)
 Technique: *kiribori*, *dōgubori*, *tsukibori*,
ichimaizuki
 25 × 41 cm [12,7 cm]
 Inv. No. A 10.155

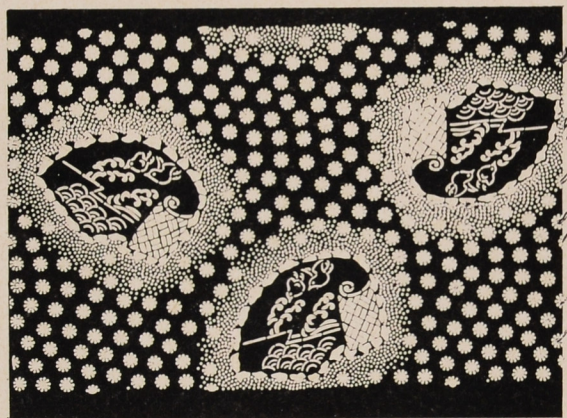


564 Type: *jizomari*
 Gourd against large "stars" [cobweb?]
 Technique: *kiribori*, *tsukibori*
 25,2 × 41,3 cm [13,3 cm]
 Inv. No. A 10.124

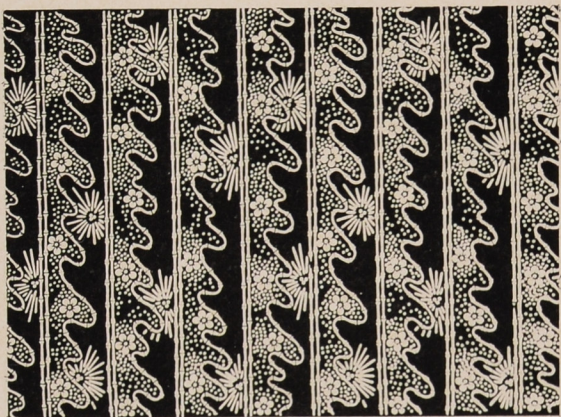
- 565 Type: *jizomari*
 Large flowers with leaf pattern against
 snow crystals
 Technique: *dōgubori, kiribori, tsukibori*
 30,7 × 40,8 cm [20,4 cm]
 Inv. No. A 10.386



- 566 Type: *jizomari*
 Scrolls with plovers-and-waves motifs
 and *ajiro* against snow crystals
 Technique: *kiribori, dōgubori, tsukibori*
 30,8 × 41 cm [19,8 cm]
 Inv. No. A 10.058



- 567 Type: *jizomari*
shōchikubai design
 Technique: *kiribori, dōgubori, tsukibori,*
ichimaizuki
 20,8 × 41,3 cm [13,3 cm]
 Inv. No. A 10.158



- 568 Type: *jizomari*
 Regular design composed of geometrical
 and floral motifs
 Technique: *kiribori, tsukibori*
 31,1 × 40,7 cm [20 cm]
 Inv. No. A 10.003

