



JAPANESE STENCILS
IN THE NÁPRSTEK MUSEUM COLLECTION

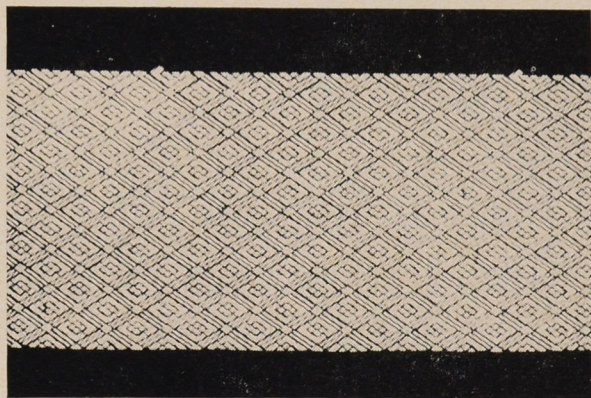
Part II.
CHŪGATA PATTERNS OF JISHIRO TYPE

LIBUŠE BOHÁČKOVÁ

Part I consisting of an introductory essay, bibliography and catalogue of *komon* stencils was published in Annals of the Náprstek Museum 1983, Vol. 11, pp. 9—22.

1. Geometric Patterns

a) Patterns of Linear Character



90

Type: *jishiro* *

Split lozenges in triple diaper

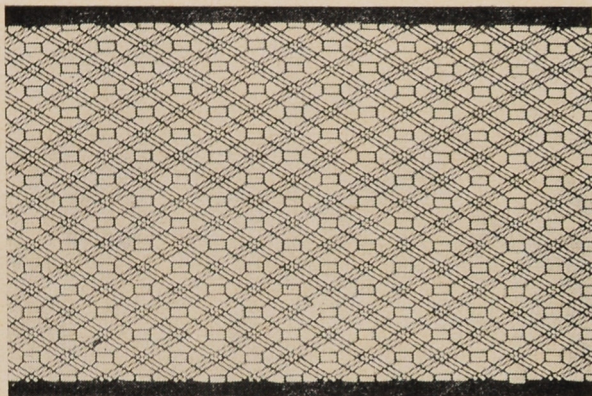
Technique: *tsukibori*, *dōgubori*; *itoire*

24,7 × 41,1 cm (14 cm)**

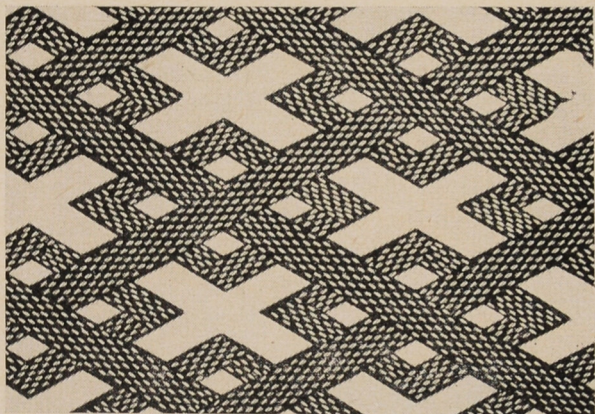
Inv. No. A 10.117

*For the explanation of Japanese terms see Index on pp. 68—69.

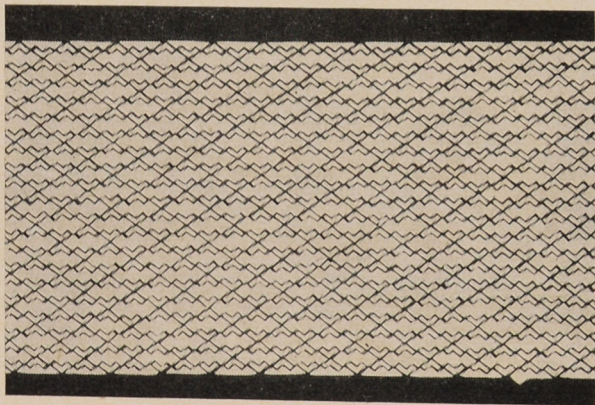
** The bracketed numbers indicate width of the perforated part of the stencil.



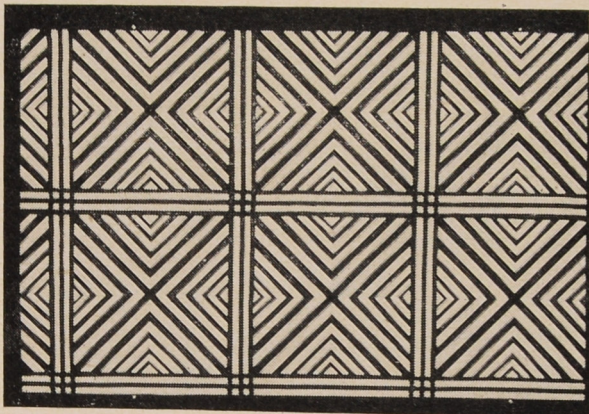
91
 Type: *jishiro*
 Triple lozenge diaper crossed by
shokkō pattern
 Technique: *tsukibori*, *kiribori*
 23,7 × 40,3 cm (13 cm)
 Inv. No. A 10.263



92
 Type: *jishiro*
 Large lozenge diaper crossing
 smaller lozenges
 Technique: *tsukibori*, *ichimaizuki*;
itoire
 30,6 × 40,3 cm (19 cm)
 Inv. No. A 10.592



93
 Type: *jishiro*
 Lozenge diaper crossed by zigzag
 stripes
 Technique: *tsukibori*; *itoire*
 24,8 × 41 cm (12,6 cm)
 Inv. No. A 10.281

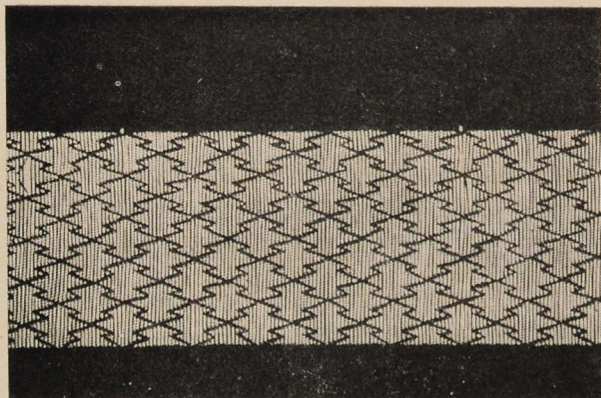


94a
 Type: *jishiro*
 Triple lattice crossing *irekobishi*
 pattern
 Technique: *tsukibori*; *itoire*
 32,3 × 40,2 cm (20 cm)
 Inv. No. A 10.408

94b
 Type: *jishiro*
 The same pattern as 94a
 32 × 40,3 cm (20,1 cm)
 Inv. No. A 10.837

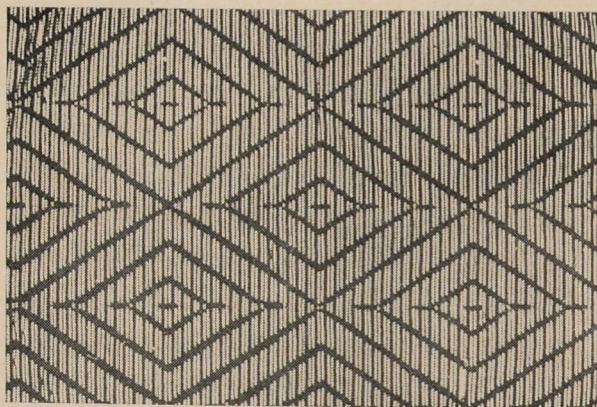
95

Type: *jishiro*
matsukawabishi pattern on striped
background
Technique: *tsukibori*; *itoire*
24,6 × 40,7 cm [11,8 cm]
Inv. No. A 10.298



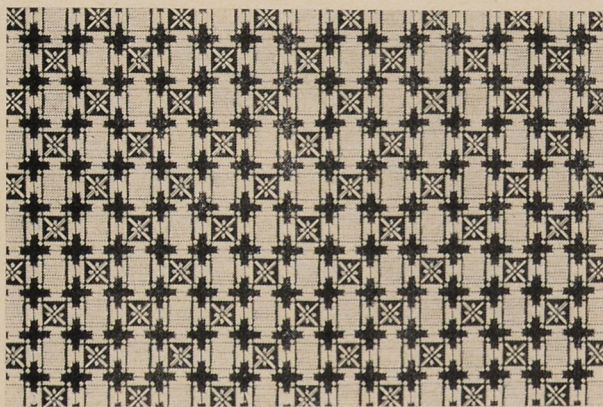
96

Type: *jishiro* ?
irekobishi pattern on striped back-
ground
Technique: *tsukibori*
31,1 × 39,5 cm [21,1 cm]
Inv. No. A 10.363



97

Type: *jishiro*
Diaper consisting of small crosses,
stripes, stylized flowers
Technique: *tsukibori*, *kiribori*,
ichimaizuki
25,5 × 41,3 cm [15,2 cm]
Inv. No. A 10.175

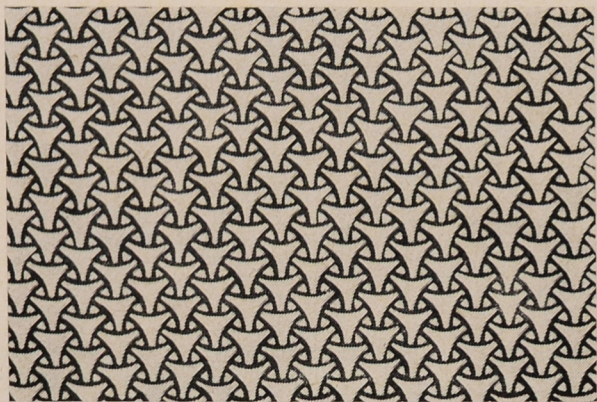


b) Patterns of Curvilinear
Character

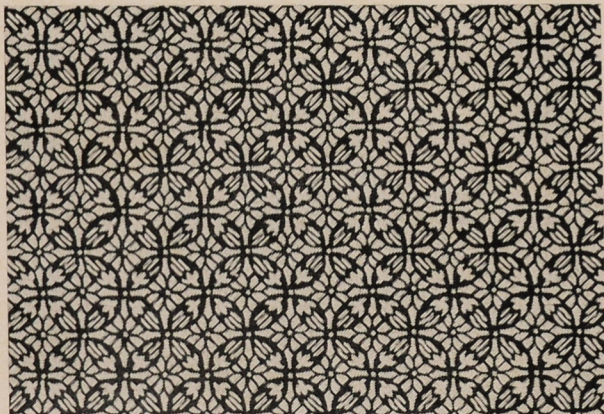
98

Type: *shima*
Irregular *tatewaku* (*kawari tatewaku*)
Technique: *tsukibori*; *itoire*
34 × 29,6 cm [19,6 cm]
Inv. No. A 3.692

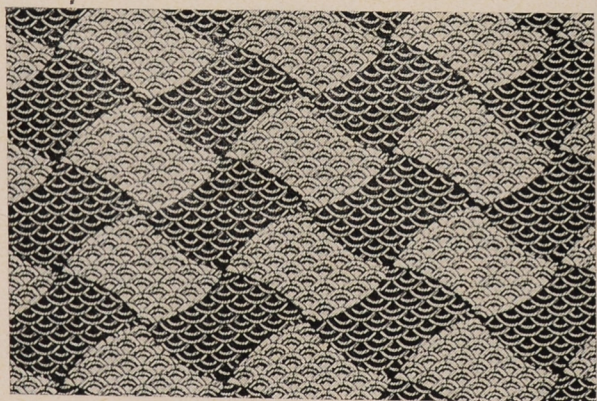




99
 Type: *jishiro*
 Interlocking rings (*yaburewa chigai*)
 Technique: *tsukibori*
 24,9 × 40,5 cm (14,2 cm)
 Inv. No. A 10.200

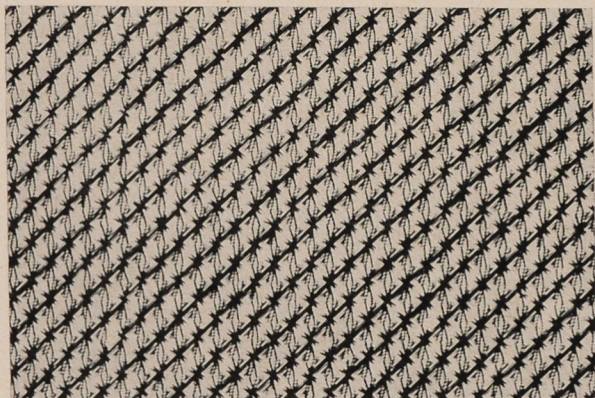


100
 Type: *jishiro*
Shippō pattern composed of miniature
hōō, against flowers
 Technique: *tsukibori*
 14,8 × 41,6 cm (12,2 cm)
 Inv. No. A 10.294



101
 Type: *jishiro/jizomari*
fundō pattern bearing *seigaiha*
 waves in positive and negative
 Technique: *tsukibori, ichimaiwa*
 32 × 41,2 cm (22,5 cm)
 Inv. No. A 10.056

c) Patterns Composed of
 Linear and Curvilinear
 Elements



102
 Type: *jishiro*
 Rope curtain crossed by stripes
 Technique: *tsukibori, ichimaizuki;*
itoire
 29,3 × 41,5 cm (17,3 cm)
 Inv. No. A 10.030

103

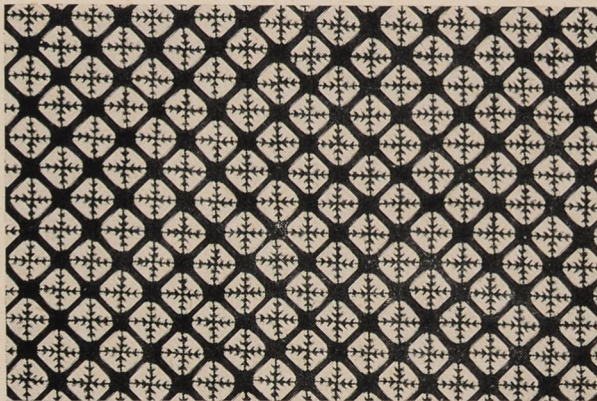
Type: *jishiro*

Diaper of squares with rounded corners against tendril lattice

Technique: *tsukibori*; *itoire*

24,7 × 40,3 cm (13,3 cm)

Inv. No. A 10.171



104

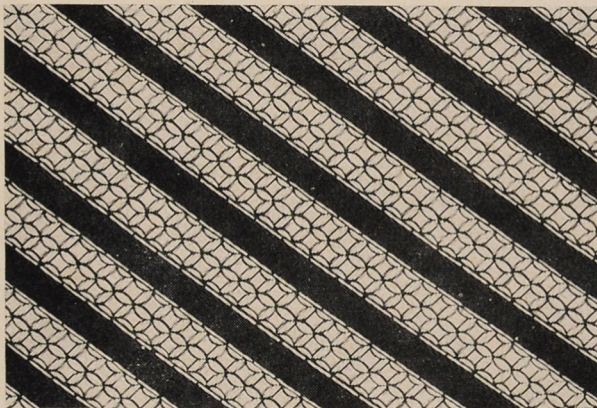
Type: *jishiro*

Oblique stripes of *shippō* pattern

Technique: *tsukibori*

28 × 40,2 cm (19 cm)

Inv. No. A 10.499



105

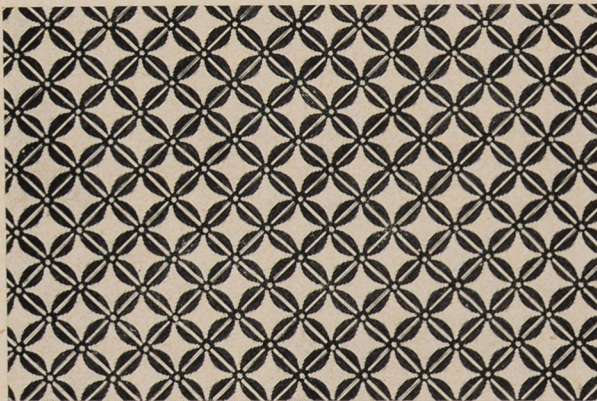
Type: *jishiro*

shippō

Technique: *tsukibori*, *kiribori*

24,6 × 40,9 cm (15,8 cm)

Inv. No. A 10.265



106

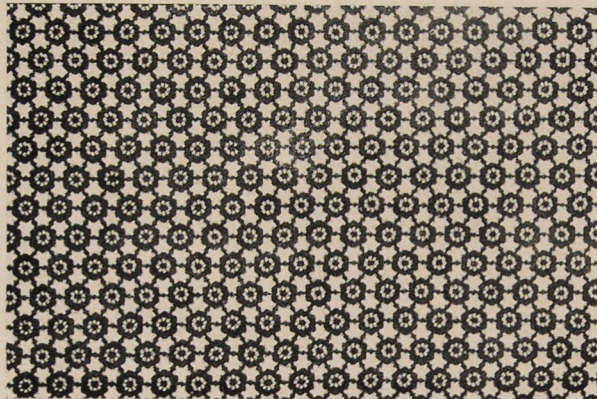
Type: *jishiro*

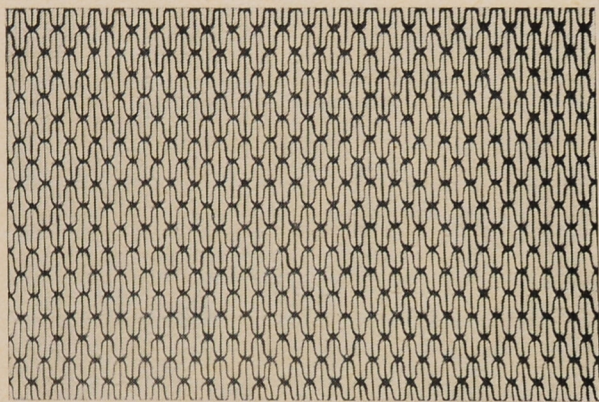
Interlocking "wheels of Teaching"
(*rimbō*)

Technique: *tsukibori*, *kiribori*

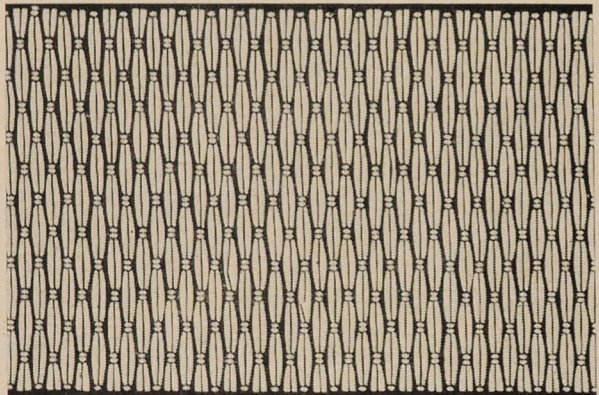
24,6 × 40,9 cm (17,8 cm)

Inv. No. A 10.289

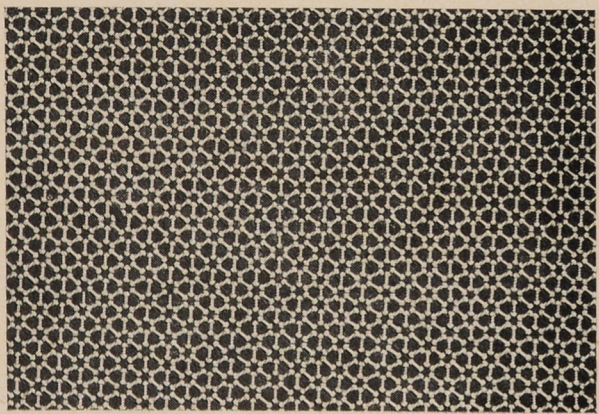




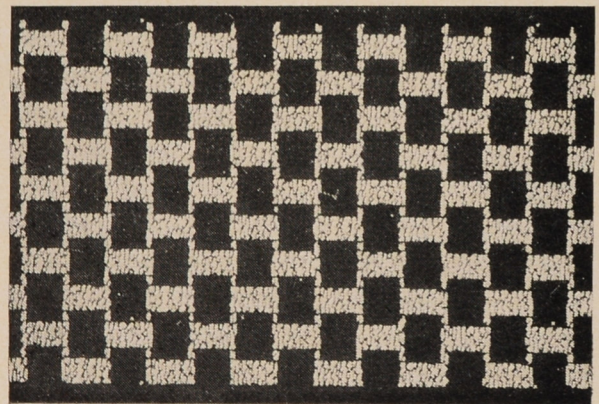
107
Type: *jishiro*
amime pattern crossed by vertical
lines
Technique: *tsukibori; itoire*
24,7 × 41,1 cm [14,5 cm]
Inv. No. A 10.261



108
Type: *jishiro*
Rope curtain
Technique: *tsukibori, dōgubori; itoire*
24,5 × 41,1 cm [12,8 cm]
Inv. No. A 10.181



109
Type: *jishiro*
Interlocking flowers
Technique: *dōgubori, ichimaizuki?*
29,5 × 40,4 cm [20,8 cm]
Inv. No. A 10.460



110
Type: *jishiro*
tarekaku (vertically elongated rect-
angles) on irregular background
Technique: *tsukibori*
29,1 × 40,6 cm [18,8 cm]
Inv. No. A 10.429

111

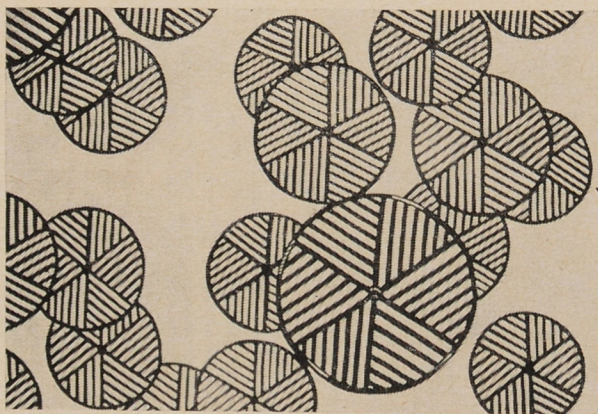
Type: *jishiro*

Balls

Technique: *tsukibori*; *itoire*

41,5 × 57,3 cm (32,1 cm)

Inv. No. A 10.755



d) Various Motifs in Geometrical Arrangement

112

Type: *jishiro*

Bamboo stems in *ajiro* arrangement

Technique: *tsukibori*

32,2 × 40,3 cm (22,1 cm)

Inv. No. A 10.370



113

Type: *jishiro*

tatewaku composed of flowers, leaves and conventionalized clouds (*unju*)

Technique: *tsukibori*; *itoire*

24 × 40,6 cm (12,5 cm)

Inv. No. A 10.004



114

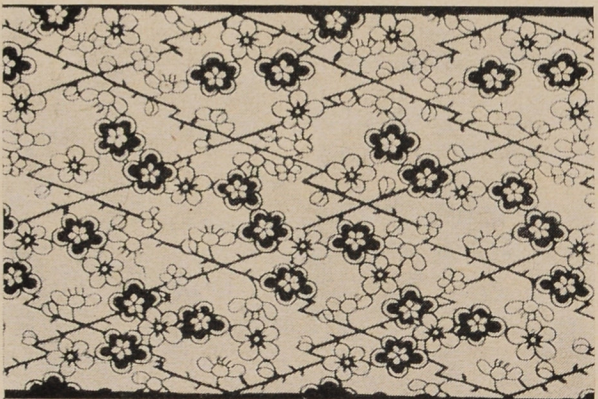
Type: *jishiro*

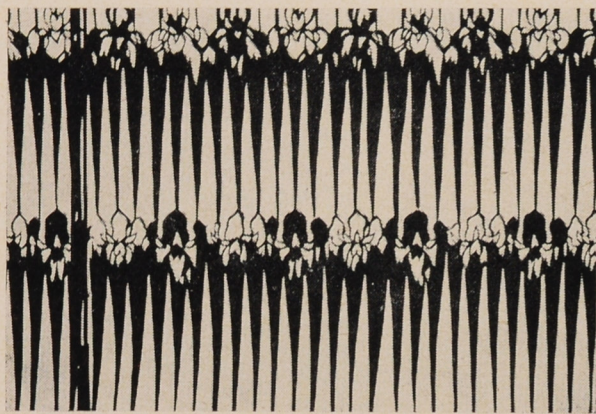
Plum branches arranged in *matsukawabishi* lozenges

Technique: *tsukibori*; *itoire*

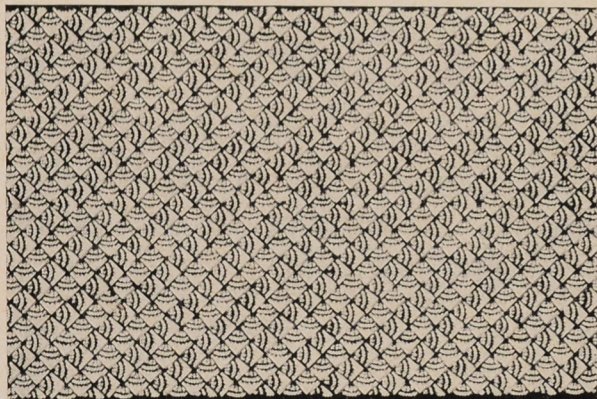
22,7 × 40,3 cm (12 cm)

Inv. No. A 10.057





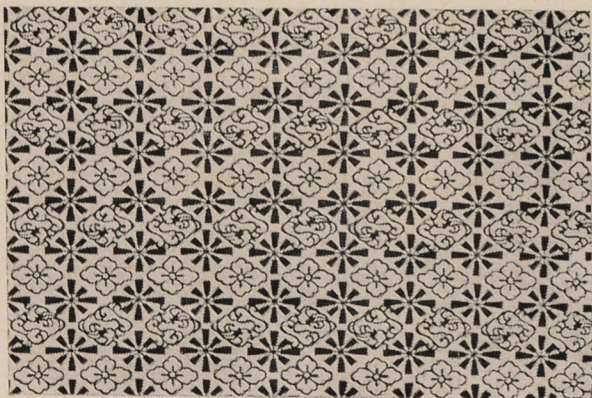
115
 Type: *jishiro*
 Irises
 Technique: *tsukibori; itoire*
 31,7 × 40,7 cm (20,1 cm)
 Inv. No. A 10.628



116
 Type: *jishiro*
kawari masugata of small fans
 Technique: *tsukibori, dōgubori*
 24,2 × 40,6 cm (13 cm)
 Inv. No. A 10.177



117
 Type: *jishirō*
 Rows of alternately arranged closed
 umbrellas
 Technique: *tsukibori; itoire*
 24,6 × 40,3 cm (13,7 cm)
 Inv. No. A 10.279



118
 Type: *jishiro*
 Diaper of dragons, *karahana* and
 rosettes composed of closed fans
 Technique: *tsukibori; itoire*
 29,2 × 41,3 cm (17,2 cm)
 Inv. No. A 10.036

119

Type: *jishiro*

Wavy stripes of wistaria flowers and chains with syllables of "hito" and "shimu" at crossings

Technique: *tsukibori*; *itoire*

31,3 × 43,2 cm (19,1 cm)

Inv. No. A 10.074



120

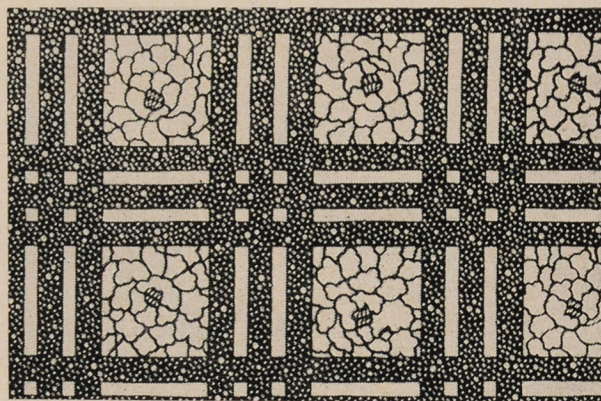
Type: *jishiro*

Triple lattice and peony flowers

Technique: *kiribori*, *tsukibori*

30,7 × 40,3 cm (17,2 cm)

Inv. No. A 10.012



121

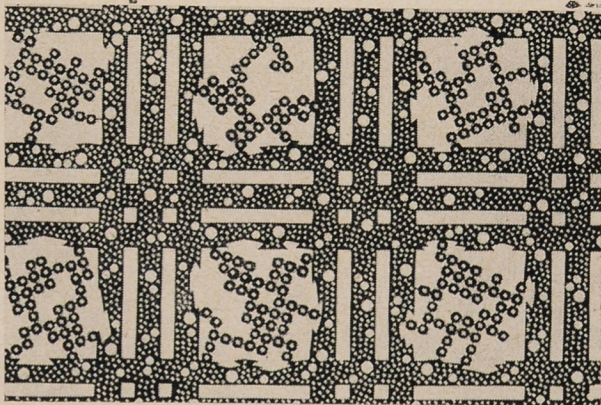
Type: *jishiro*

Triple lattice and fragments of irregular pattern

Technique: *kiribori*, *tsukibori*; *itoire*

31,5 × 42,3 cm (18,5 cm)

Inv. No. A 10.009



e) Geometrical Patterns
Containing Characters

122a

Type: *jishiro*

Seal-script characters against stripes of wistaria flowers

Technique: *tsukibori*; *itoire*

31,4 × 41,2 cm (18,6 cm)

Inv. No. A 10.472



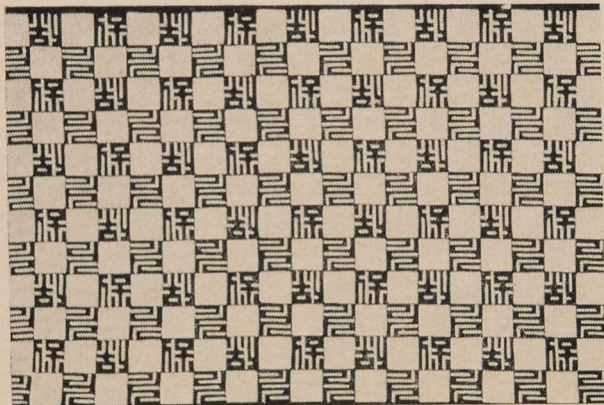
122b

Type: *jishiro*

The same pattern as 122a

32,1 × 42 cm (18,4 cm)

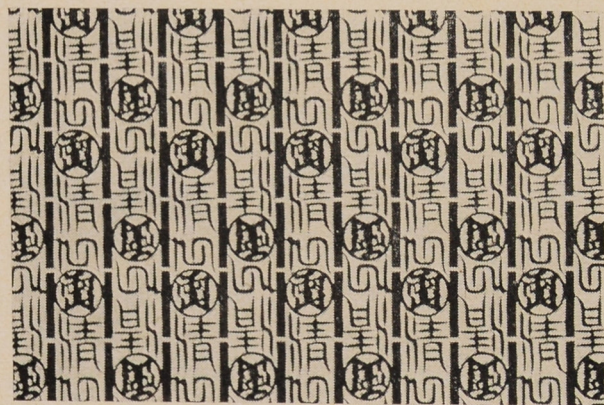
Inv. No. A 10.490



123
 Type: *jishiro*
 Checker of alternately arranged
 characters "ho" and ?
 Technique: *tsukibori; itoire*
 30,8 × 41,2 cm (16,5 cm)
 Inv. No. A 10.411



124
 Type: *jishiro*
 Checker of the character "ko" and
 conventionalized plum blossom (?)
 Technique: *tsukibori; itoire*
 24,3 × 41,2 cm (18 cm)
 Inv. No. A 10.174



125
 Type: *jishiro*
 Design composed of four characters:
 "pure heart" and "rainy mountains"
 Technique: *tsukibori; itoire*
 32,4 × 41,5 cm (18 cm)
 Inv. No. A 10.428



126
 Type: *jishiro*
 Inscriptions, mon, stripes in *higaki*
 arrangement
 Technique: *tsukibori, dogubori,*
kiribori
 30,7 × 40,2 cm (20 cm)
 Inv. No. A 10.072

f) Patterns with Geometric Background

127

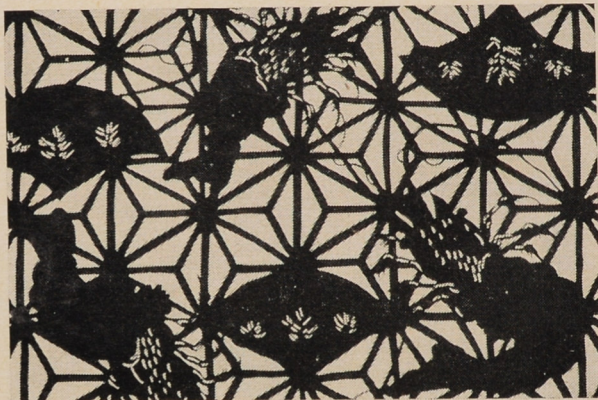
Type: *jishiro*

Lobsters and fans against *asanoha* pattern

Technique: *tsukibori*

30,7 × 40,5 cm (20,3 cm)

Inv. No. A 10.076



128

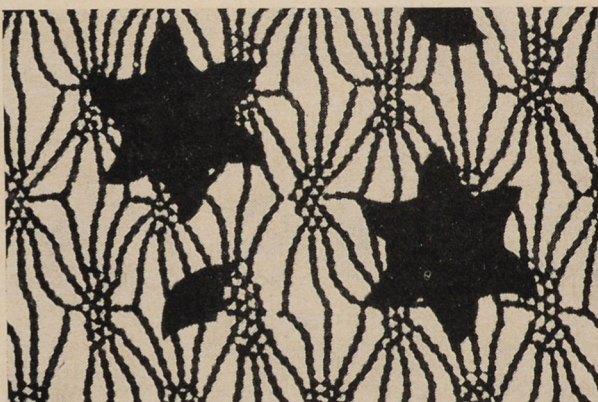
Type: *jishiro*

Stars (pasted) on distorted *asanoha* ground

Technique: *tsukibori*

29,5 × 40,5 cm (20,7 cm)

Inv. No. A 10.384



129

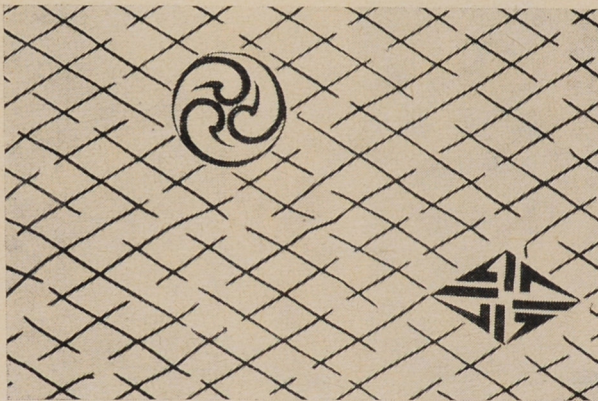
Type: *jishiro*

Two family crests (*mon*) against fragmentary lozenge diaper

Technique: *tsukibori*; *itoire*

33 × 40,4cm (19,2 cm)

Inv. No. A 10.092



130

Type: *jishiro*

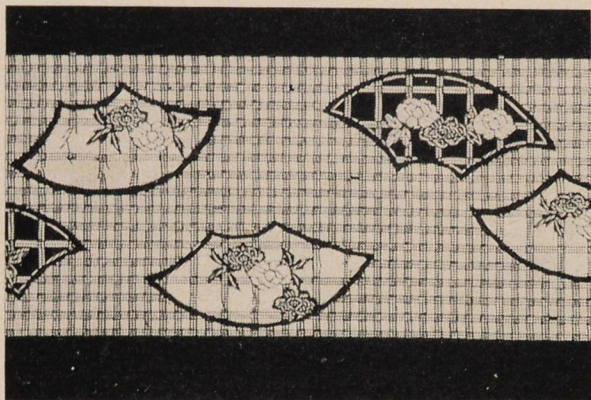
sakura blossoms, large *shippō* against *ajiro* and *kawari bishamon-kikko*

Technique: *tsukibori*

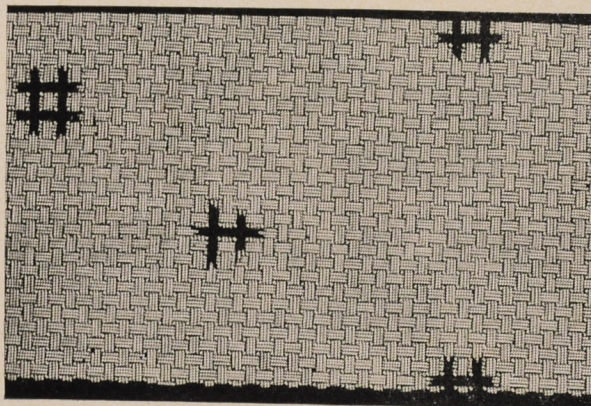
30,7 × 40,5 cm (20,6 cm)

Inv. No. A 10.591

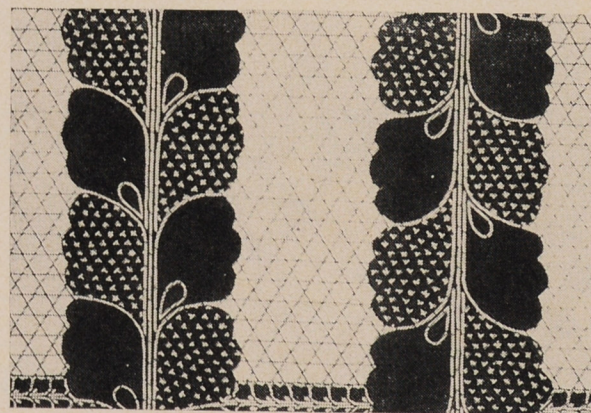




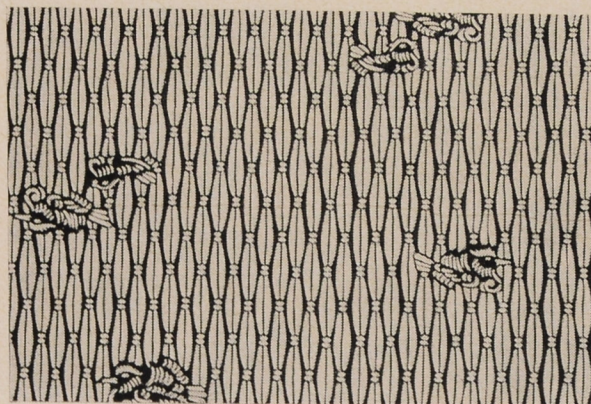
131
 Type: *jishiro*
 Peonies and bamboo in fan-papers
 medallions against fine triple checker
 (*sansuji-kōshi*)
 Technique: *tsukibori*, *kiribori*,
ichimaizuki
 24,5 × 40,4 cm (13,2 cm)
 Inv. No. A 10.121



132
 Type: *jishiro*
 Complete and fragmentary *igeta*
 pattern against *ajiro* matwork
 Technique: *tsukibori*, *kiribori*
 25,5 × 41,3 cm (12,3 cm)
 Inv. No. A 10.184



133
 Type: *jishiro*
 Wistaria flowers against basketwork
 pattern (*kagome*)
 Technique: *tsukibori*, *dōgubori*
 32 × 41 cm (22,7 cm)
 Inv. No. A 10.467



134
 Type: *jishiro*
 Mandarin ducks against rope curtain
 Technique: *tsukibori*, *dōgubori*
 24,6 × 41,2 cm (12,8 cm)
 Inv. No. A 10.212

135

Type: *jishiro*

kaji (paper mulberry)

leaves against triple lozenge diaper
and *fundō*

Technique: *tsukibori*

23 × 41,6 cm (13 cm)

Inv. No. A 10.300



2. Patterns with Stripes

a) Bands of Stripes
on Background

136

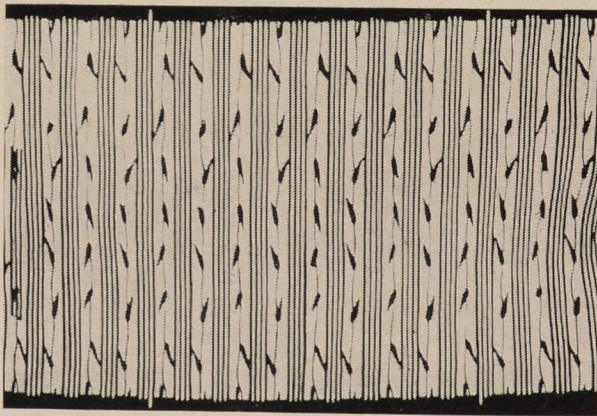
Type: *jishiro*

Stripes of four lines alternating with
a leafy stalk

Technique: *hikibori*, *tsukibori*; *itoire*

30,2 × 38,7 cm (19 cm)

Inv. No. A 10.451



137

Type: *jishiro*

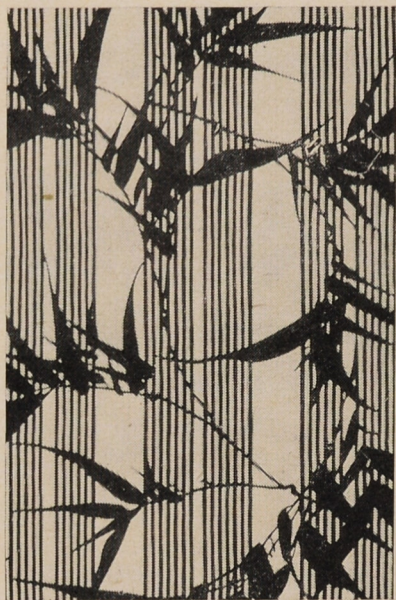
Bamboo blind and *sakura* blossoms

Technique: *hikibori*, *tsukibori*; *itoire*

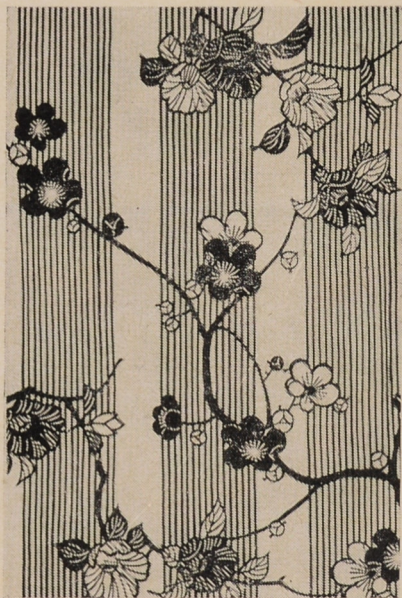
24 × 40,5 cm (15,2 cm)

Inv. No. A 10.306



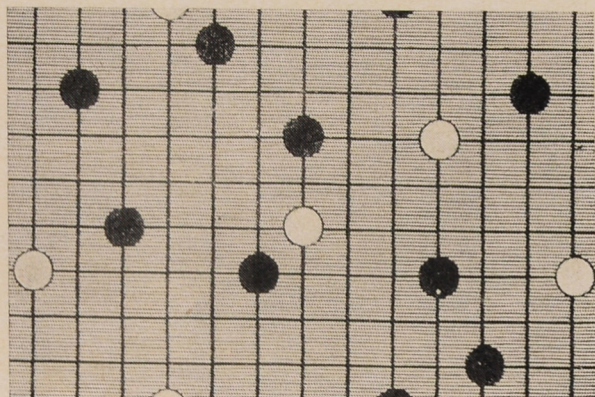


138
 Type: *jishiro*
 Silhouette of bamboo against bamboo
 blind
 Technique: *hikibori*, *tsukibori*; *itoire*
 34,5 × 50,3 cm (28,8 cm)
 Inv. No. A 10.014



139
 Type: *jishiro*
 Camellia stalk and plum branch
 against bamboo blind
 Technique: *hikibori*, *tsukibori*; *itoire*
 34,8 × 50,4 cm (28,9 cm)
 Inv. No. A 10.015

b) Regularly Striped Back-
 ground



140
 Type: *jishiro*
 Beads in positive and negative against
 square lattice;
 finely striped background
 Technique: *tsukibori*
 26,5 × 42 cm (12,2 cm)
 Inv. No. A 10.131

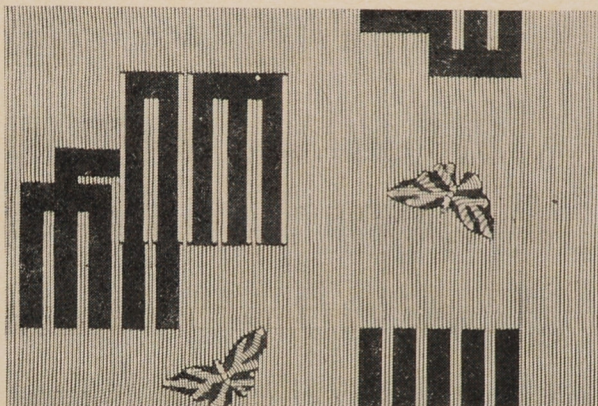
141

Type: *jishiro*

Genjikō marks and butterflies against finely striped ground

Technique: hikibori, tsukibori; itojre
25,2 × 41,1 cm (16,1 cm)

Inv. No. A 10.148



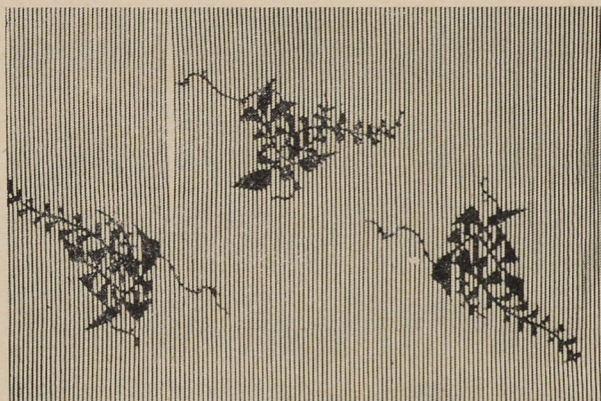
142

Type: *jishiro*

Wistaria flowers on finely striped ground

Technique: hikibori, tsukibori; itoire
31,2 × 40,9 cm (21,1 cm)

Inv. No. A 10.090



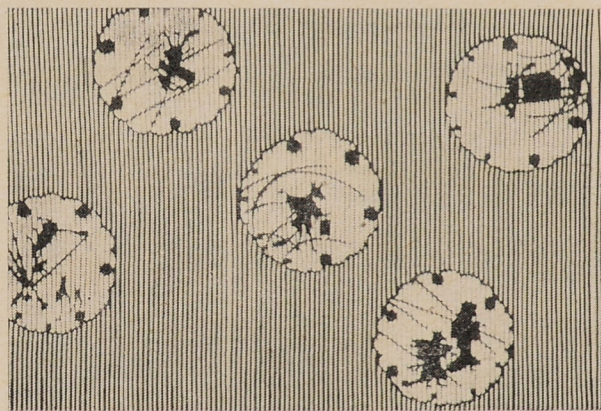
143

Type: *jishiro*

Medallions in the shape of snow crystals enclosing scenes from the "fox's wedding", finely striped ground

Technique: hikibori, tsukibori; itoire
31 × 40,5 cm (20,3 cm)

Inv. No. A 10.476



144

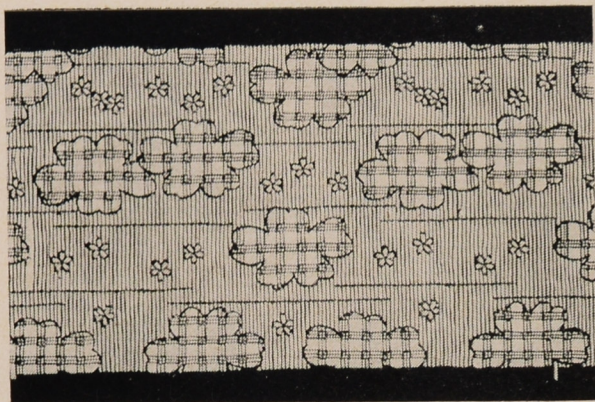
Type: *jishiro*

shōchikubai: bamboo stalks, plum branches and pine needles on fine tottering (*yōrō*) stripes

Technique: *tsukibori*; *itoire*
30,7 × 40,2 cm (20,4 cm)

Inv. No. A 10.620





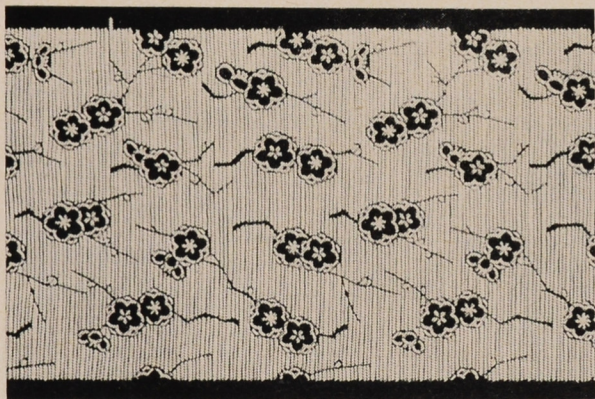
145

Type: *jishiro*

sakura blossoms and triple square
lattice on striped ground

Technique: *tsukibori, dōgubori, kiribori*
23,9 × 41,2 cm (11,5 cm)

Inv. No. A 10.108



146

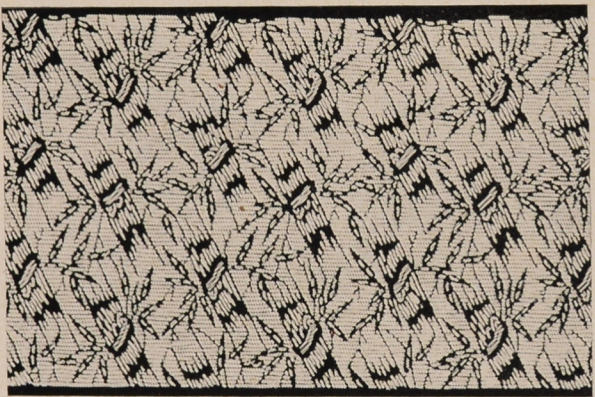
Type: *jishiro*

Plum twigs on striped ground

Technique: *tsukibori, dōgubori,*
ichimaiwa; itoire

25,2 × 40,3 cm (13 cm)

Inv. No. A 10.259



147

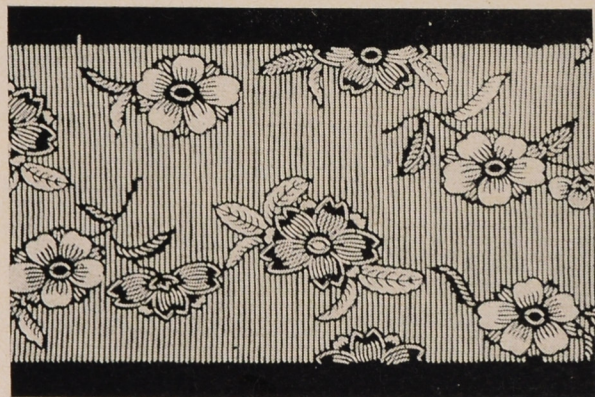
Type: *jishiro*

Bamboo on striped ground

Technique: *tsukibori*

24,4 × 40,8 cm (12,2 cm)

Inv. No. A 10.178



148

Type: *jishiro*

sakura sprays against stripes

Technique: *tsukibori; itoire*

24,3 × 40,5 cm (12,2 cm)

Inv. No. A 10.222

149

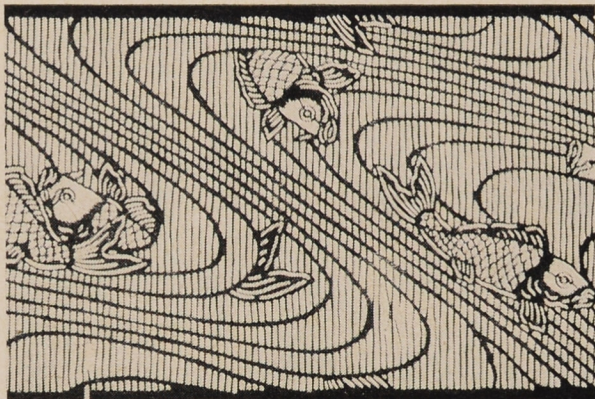
Type: *jishiro*

Carp in waves

Technique: *tsukibori*; *itoire*

23,2 × 40,3 cm (13,1 cm)

Inv. No. A 10.038



150

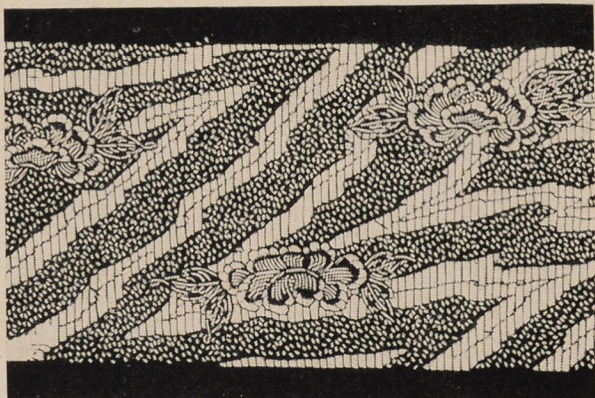
Type: *jishiro*

Peonies against striped and granulated sections (water stream in garden?)

Technique: *tsukibori*, *dōgubori*

25,8 × 41,7 cm (11,7 cm)

Inv. No. A 10.286



c) Patterns with Very
Finely Striped Ground

151

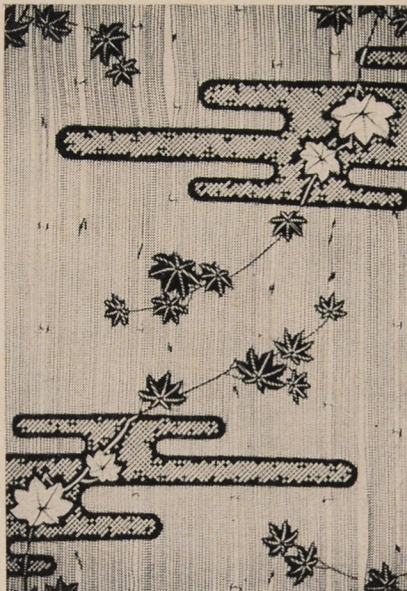
Type: *jishiro*

Maple leaves and trailing haze against
bamboo stems and stripes

Technique: *tsukibori*, *kiribori* (details
in *gyōgi*); *itoire*

42,1 × 54,1 cm (35 cm)

Inv. No. 35.011



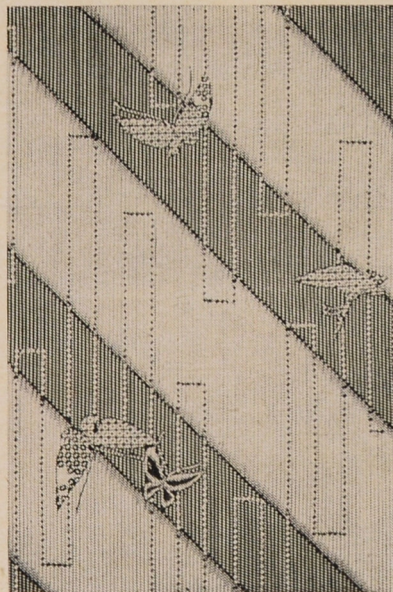


152
 Type: *jishiro*
 Irises against bamboo blind (?).
kasuri effect
 Technique: *tsukibori*, *hikibori*; *itoire*
 42,4 × 65 cm (34,7 cm)
 Inv. No. A 10.025



153
 Type: *jishiro*
 Plovers and flower clusters, maple(?)
 leaves. *kasuri* effect
 Technique: *tsukibori*, *hikibori*, *kiribori*
 (details in *gyōgi*); *itoire*
 43,3 × 63,2 cm (36,2 cm)
 Inv. No. A 10.028

154
 Type: *jishiro*
 Butterflies and haze? against stripes.
 Positive-negative contrast effect
 Technique: *hikibori*, *tsukibori*; *itoire*
 43,2 × 64,7 cm (36,3 cm)
 Inv. No. A 10.027



155
 Type: *jishiro*
Yoshinogawa (cherry blossoms and
 waves) against extremely fine mesh
 Technique: *tsukibori*, *kiribori* (details
 in *gyōgi*), *dōgubori*
 42 × 62,5 cm (35,4 cm)
 Inv. No. A 10.026





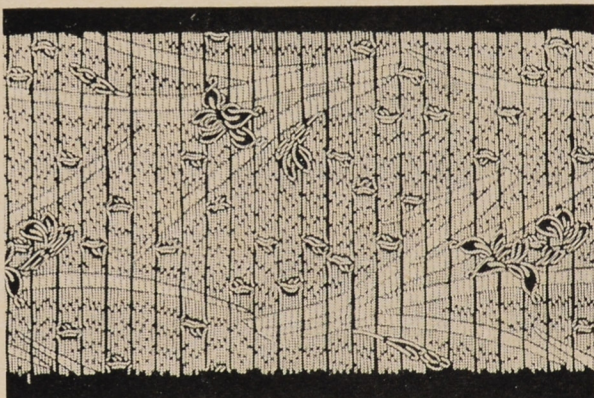
156
 Type: *jishiro*
 Maple leaves against fine mesh with
 zigzag lines of miniature circles
 Technique: *tsukibori*, *kiribori*, *dōgubori*
 (details in *kōshi*); *itoire*
 41 × 60,8 cm (39 cm)
 Inv. No. A 10.024



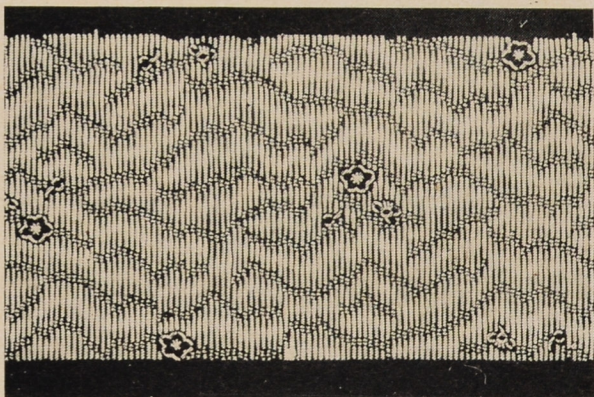
157
 Type: *jishiro*
 Bamboo against rectangular mesh
 (*kawari kōshi*). *kasuri* effect
 Technique: *tsukibori*; *itoire*
 43,3 × 54,5 cm (35,8 cm)
 Inv. No. 34.956

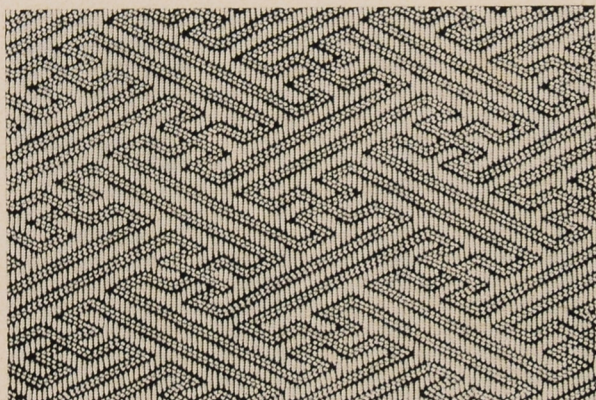
d) Patterns with
 Irregularly Striped Ground

158
 Type: *jishiro* ?
 Irises and bamboo stems
 Technique: *tsukibori*
 Seal: "Kei-gon"
 24,4 × 40,5 cm (11,7 cm)
 Inv. No. A 10.047

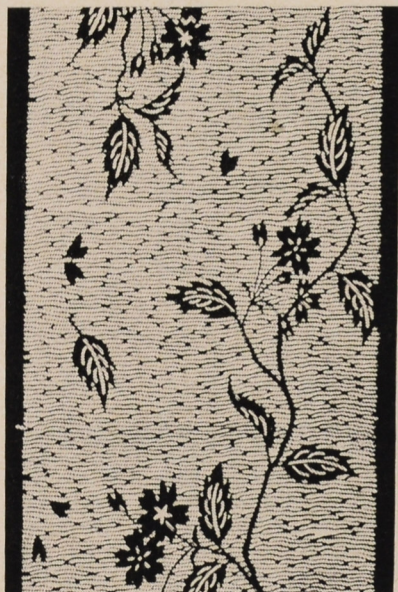


159
 Type: *jishiro* ?
 Plum blossoms against clouds?
kasuri effect
 Technique: *tsukibori*, *dōgubori*; *itoire*
 22,1 × 40,7 cm (12,6 cm)
 Inv. No. A 10.221





160
 Type: *jishiro*
 Key fret (*sayagata, manjitsunagi*)
 Technique: *tsukibori, kiribori*
 (*dōgubori?*)
 25,7 × 41,4 cm (14,2 cm)
 Inv. No. A 10.046



161
 Type: *jishiro*
 Cherry branches against irregular
 knotted stripes
 Technique: *tsukibori; itoire*
 21,9 × 41,1 cm (13 cm)
 Inv. No. A 10.287



162
 Type: *jishiro*
 Silhouette of bamboo against
 granulated ground
 Technique: *tsukibori*
 31,5 × 42,8 cm (19,7 cm)
 Inv. No. A 10.037

163

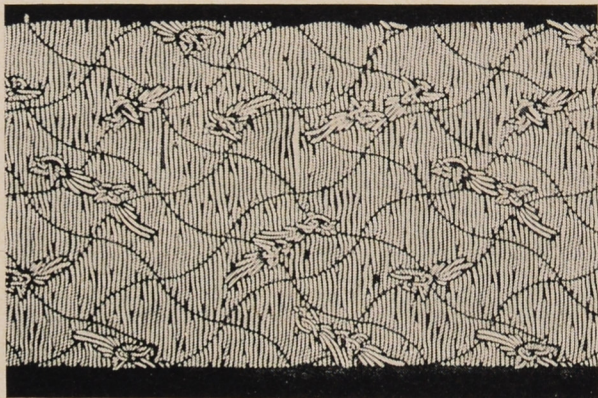
Type: *jishiro*

Long-tailed birds and *fundō* pattern,
irreguar stripes (*yōrō suji*)

Technique: *tsukibori*; *itoire*

23,1 × 41,2 cm (12,7 cm)

Inv. No. A 10.257



164

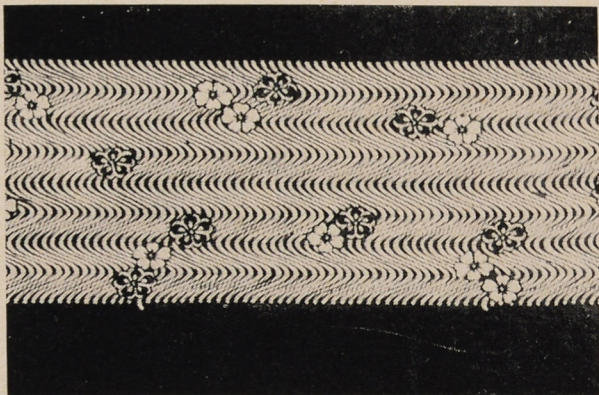
Type: *jishiro* ?

Yoshinogawa (cherry blossoms and
waves)

Technique: *tsukibori*, *dōgubori*; *itoire*

24,2 × 40,1 cm (11,8 cm)

Inv. No. A 8.612



165

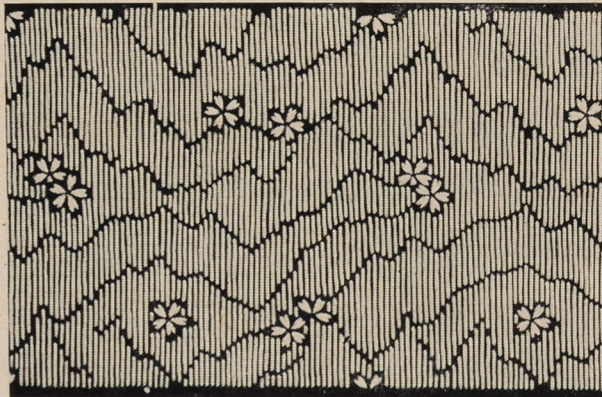
Type: *jishiro* ?

sakura blossoms and waves?

Technique: *tsukibori*, *dōgubori*; *itoire*

24 × 40,8 cm (11,5 cm)

Inv. No. A 10.218



166

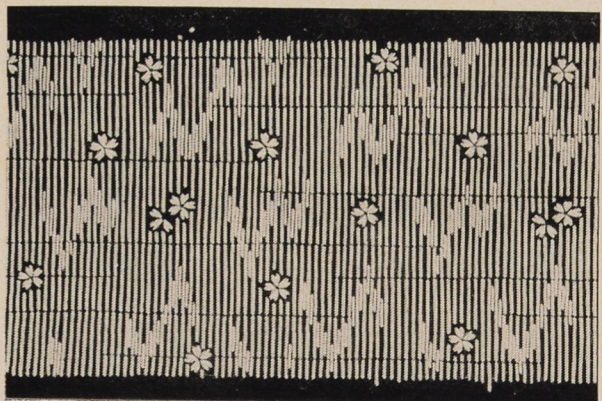
Type: *jishiro* ?

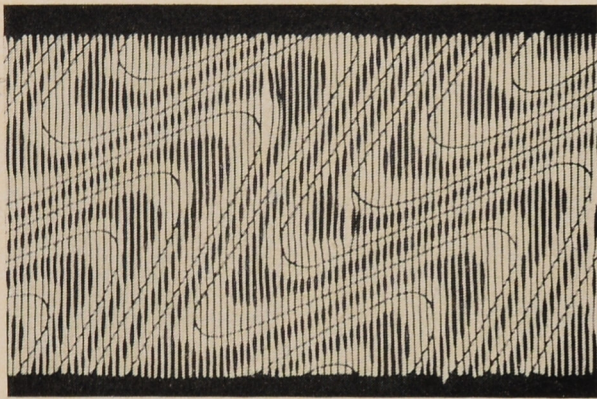
sakura blossoms and waves? in
kasuri effect

Technique: *tsukibori*, *dōgubori*; *itoire*

24 × 41 cm (13,1 cm)

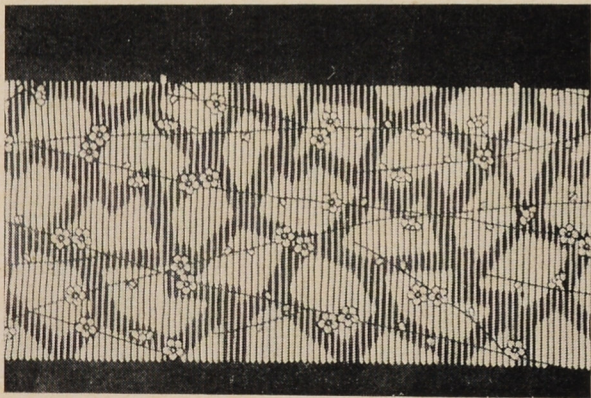
Inv. No. A 10.237



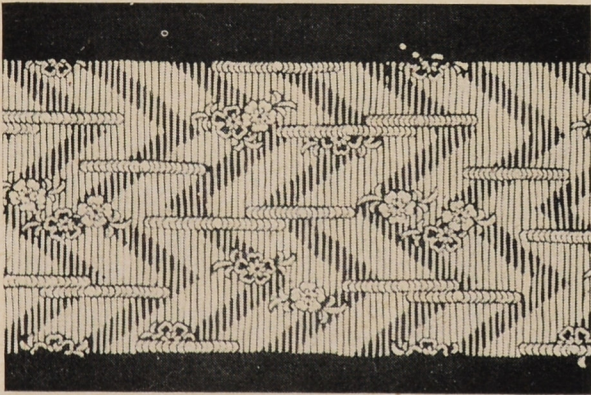


e) Patterns of *moyō kewan*
 Type { motifs or whole
 design formed by *gama-*
suji or bulrush-ear lines }

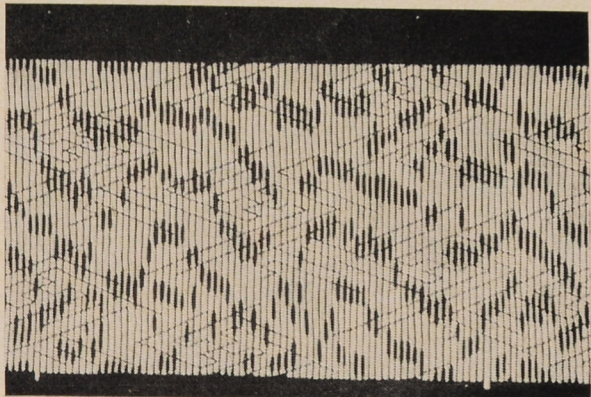
167
 Type: *moyō kewan*
 Waves
 Technique: *tsukibori*
 13,8 × 40,3 cm [12,5 cm]
 Inv. No. A 10.283



168
 Type: *moyō kewan*
 Plum branches against irregular net-
 work
 Technique: *tsukibori, dōgubori,*
kiribori
 22,5 × 40,3 cm [13,5 cm]
 Inv. No. A 8.611



169
 Type: *moyō kewan*
 sakura sprays and clouds against
 zigzag lines
 Technique: *tsukibori, dōgubori*
 23 × 41,1 cm [11 cm]
 Inv. No. A 10.258



170
 Type: *moyō kewan*
 Abstract design against key fret
 Technique: *tsukibori; itoire*
 22,7 × 40,7 cm [12,4 cm]
 Inv. No. A 10.246

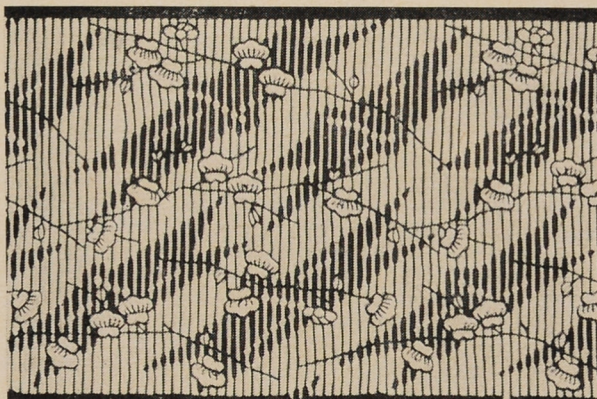
171

Type: *moyō kaman*
shōchikubai: bamboo, plum twigs and
pine needles
Technique: *tsukibori*; *itoire*
31 × 40,8 cm (21 cm)
Inv. No. A 10.635
See Cat. No. 144



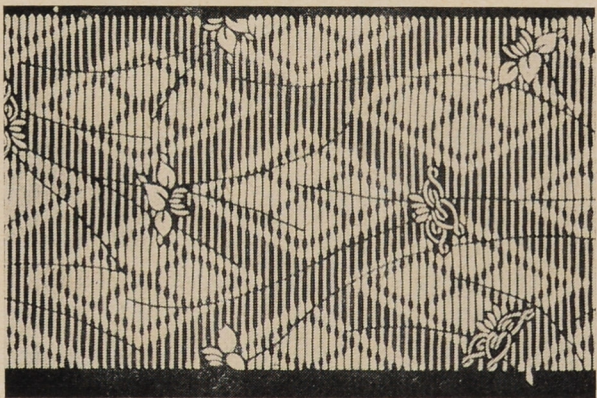
172

Type: *moyō kaman*
shōchikubai: plum branches with
blossoms stylized in pine form against
bamboo stems
Technique: *tsukibori*; *itoire*
13,9 × 40,8 cm (11,2 cm)
Inv. No. A 10.219



173

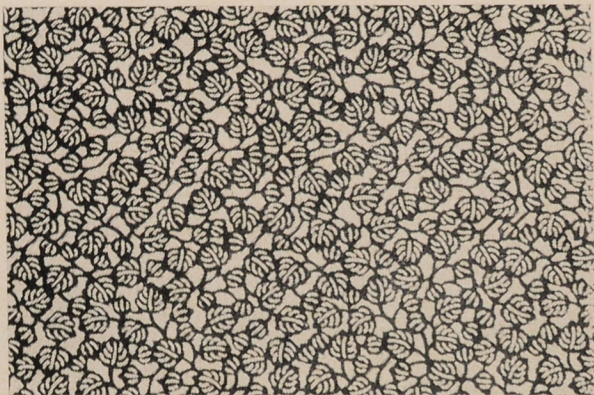
Type: *moyō kaman*
Irises against *waribishi* diaper
Technique: *tsukibori*; *itoire*
22,3 × 40 cm (11,1 cm)
Inv. No. A 10.055



174

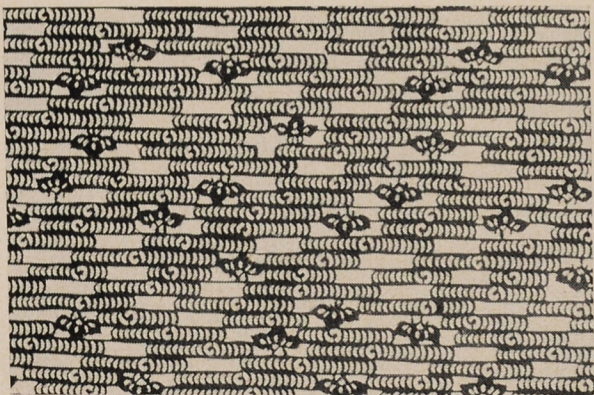
Type: *moyō kaman*
shōchikubai: plum blossoms, bamboo
leaves and pine needles
Technique: *tsukibori*; *itoire*
24,4 × 40,7 cm (11,7 cm)
Inv. No. A 10.109



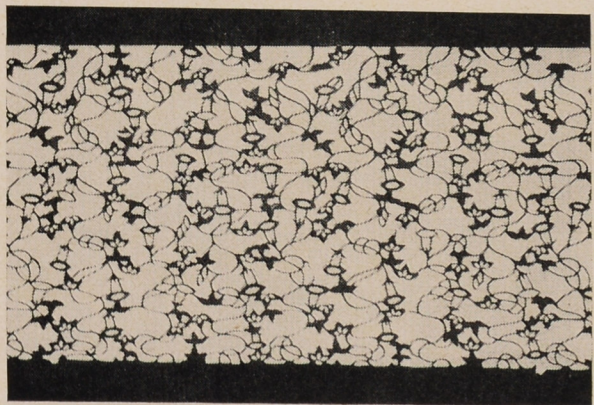


3. *kojishiro* and Other Smaller
Patterns

175
Type: *kojishiro*
Leaves
Technique: *tsukibori*
24,5 × 40,2 cm (13,8 cm)
Inv. No. A 10.105



176
Type: *kojishiro*
Irises and waves
Technique: *tsukibori*, *dōgubori*
23,9 × 40,2 cm (13 cm)
Inv. No. A 10.166



177
Type: *kojishiro*
Convolvulus (*asagao*)
Technique: *tsukibori*; *itoire*
24,1 × 41,3 cm (12,3 cm)
Inv. No. A 10.240



178
Type: *kojishiro*
Bamboo (? bulrush)
Technique: *tsukibori*
31,3 × 40,8 cm (18,5 cm)
Inv. No. A 8.688

179

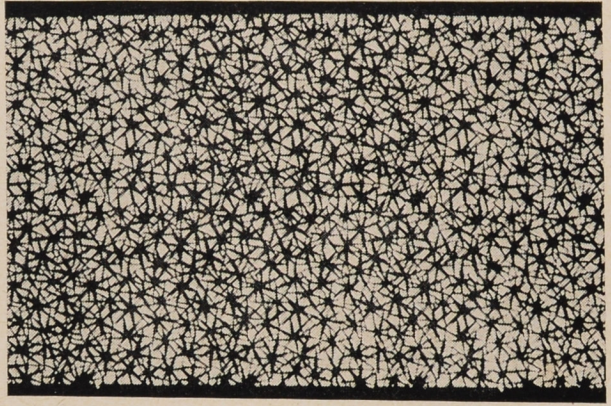
Type: *kojishiro*

Flowers ?

Technique: *tsukibori*

30 × 41,4 cm (18,8 cm)

Inv. No. A 10.002



180

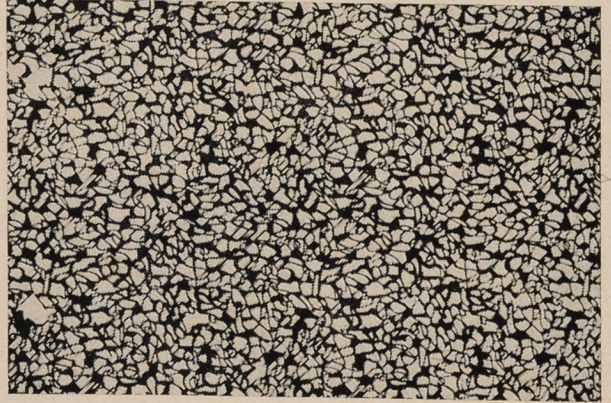
Type: *kojishiro*

Abstract pattern?

Technique: *tsukibori*

30,3 × 40,8 cm (19,8 cm)

Inv. No. A 10.382



181

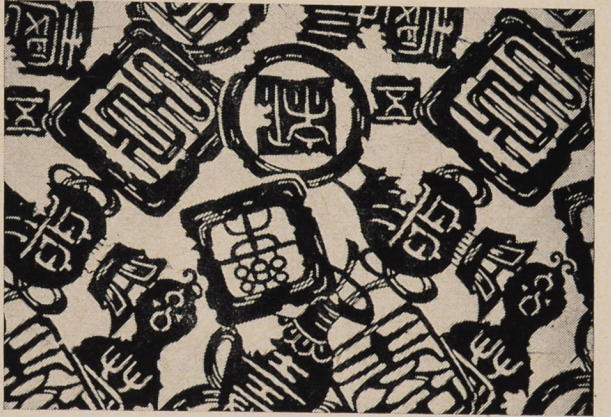
Type: *jishiro*

Bronze vessels and plaquettes
enclosing characters

Technique: *tsukibori*; *itokake*

32 × 40,3 cm (21,5 cm)

Inv. No. A 10.419



182

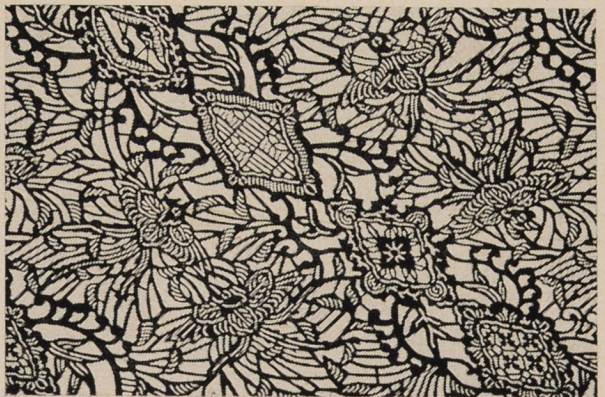
Type: *jishiro*

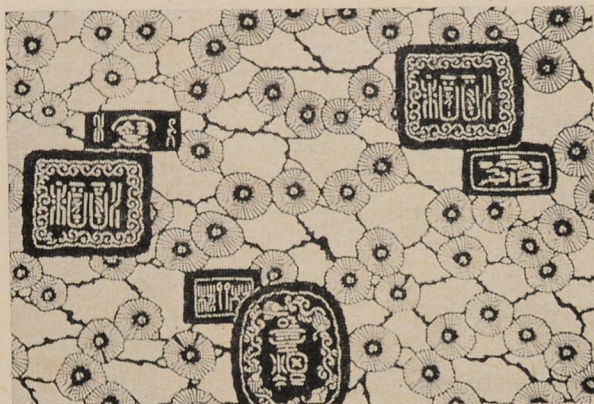
hōō birds, plaquettes, waves

Technique: *tsukibori*

25,1 × 41,2 cm (14,8 cm)

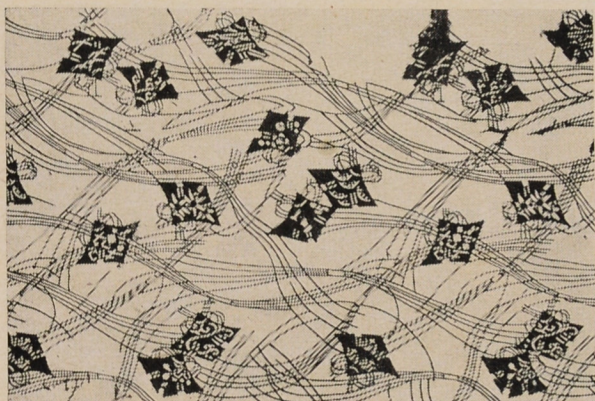
Inv. No. A 10.153



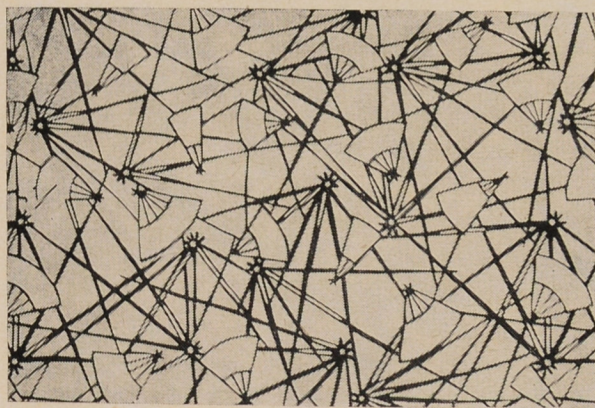


183a
 Type: *jishiro*
 Bronze plaquettes with characters
 and dragons against pine
 Technique: *tsukibori, kiribori*
 30,3 × 40,9 cm (22,3 cm)
 Inv. No. A 10.395

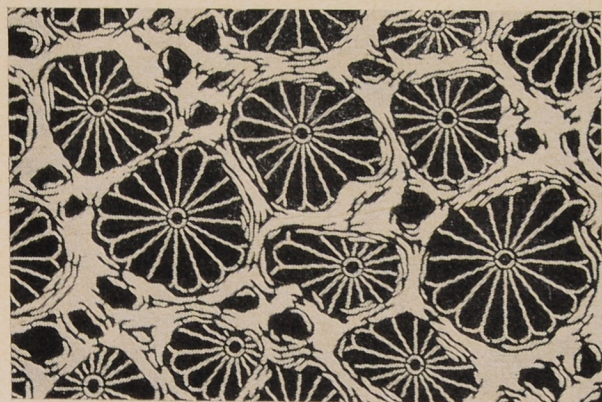
183b
 Type: *jishiro*
 The same design as 183a
 29,7 × 40,4 cm (22,2 cm)
 Inv. No. A 10.051



184
 Type: *jishiro*
 Butterflies in the shape of *noshi*
 enclosing various ornamental motifs,
 bundles of *mizuhiki* paper strings
 Technique: *tsukibori*
 30,8 × 415 cm (20,2 cm)
 Inv. No. A 10.031
 Type: *jishiro*



185
 Type: *jishiro*
 Folding fans and fan frames
 Technique: *tsukibori, kiribori; itoire*
 29,6 × 41,8 cm (19 cm)
 Inv. No. 35.527



186
 Type: *jishiro*
 Fragmentary chrysanthemum flowers
 Technique: *tsukibori; itoire*
 24,5 × 40,6 cm (15 cm)
 Inv. No. A 10.179

187

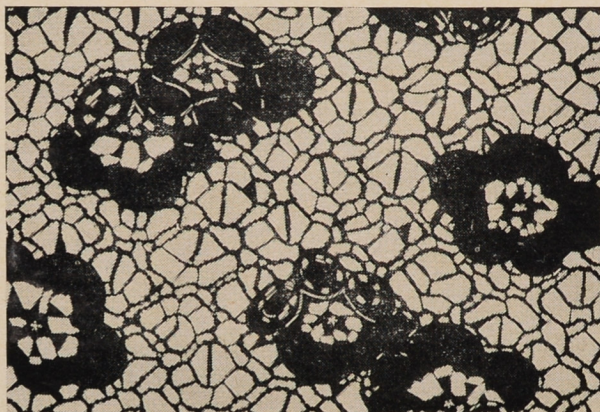
Type: *keshigata* from the *nimai kojishiro*

Plum blossoms

Technique: *tsukibori*

34,3 × 41 cm [22 cm]

Inv. No. A 10.399



4. Patterns with *karakusa* Scrolls

188a

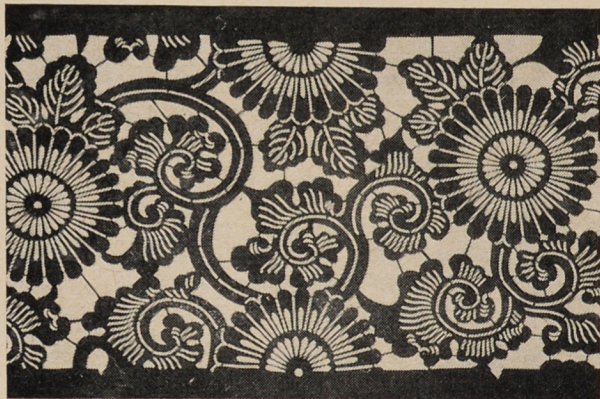
Type: *jishiro*

Chrysanthemum flowers and *karakusa*

Technique: *tsukibori, kiribori; itokake*

30,2 × 42,4 cm [18,7 cm]

Inv. No. A 8.609



188b

Type: *jishiro*

The same pattern as 188a

41,6 × 26 cm [15,7 cm]

Inv. No. A 8.696

188c

Type: *jishiro*

The same pattern as 188a

25,2 × 41,6 cm [16 cm]

Inv. No. A 8.695



189

Type: *jishiro*

Chrysanthemum flowers and *karakusa*

Technique: *tsukibori*

25,7 × 41,3 cm [14,5 cm]

Inv. No. A 10.209



190
Type: *jishiro*
Chrysanthemum flowers and *karakusa*
Technique: *tsukibori*, *kiribori*
23,6 × 41 cm [14,3 cm]
Inv. No. A 10.393



191
Type: *jishiro*
Peony flowers and *karakusa*
Technique: *tsukibori*
25,2 × 41,5 cm [14,7 cm]
Inv. No. A 10.210



192
Type: *jishiro*
Triple oak leaf and vine tendrils,
karakusa
Technique: *tsukibori*
25,2 × 40,8 cm [14,6 cm]
Inv. No. A 10.394



193a
Type: *jishiro*
Clematis and *karakusa*
Technique: *tsukibori*
25,5 × 41,2 cm [13,8 cm]
Inv. No. A 10.396

193b
Type: *jishiro*
The same pattern as 193a
25,1 × 41,3 cm [14,2 cm]
Inv. No. A 10.308

194

Type: *jishiro*

Karakusa

Technique: *tsukibori*

25,1 × 41,2 cm (16,2 cm)

Inv. No. A 10.392



5. Patterns with Motifs Derived from Nature

a) Silhouettes

195

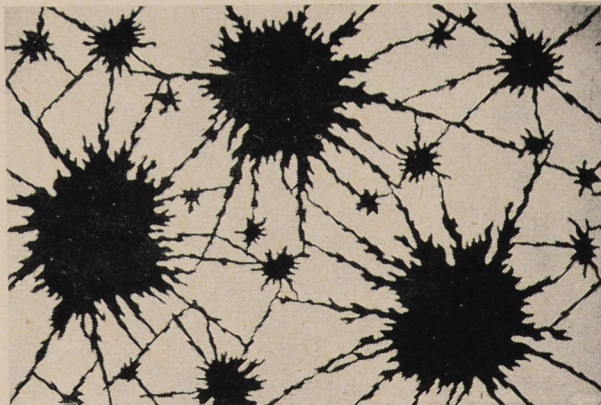
Type: *jishiro*

Blotches ?

Technique: *tsukibori; itoire*

41,2 × 57,9 cm (34 cm)

Inv. No. 3.899





196
Type: *jishiro*
Frutti di mare
Technique: *tsukibori; itoire*
43 × 55,8 cm [33,3 cm]
Inv. No. A 10.618



197
Type: *jishiro*
Grasses, flowers and butterflies
Technique: *tsukibori; itoire*
29,4 × 41 cm [20,3 cm]
Inv. No. 35.525



198
Type: *jishiro*
Leaves and grass
Technique: *tsukibori; itoire*
41,8 × 50,8 cm [33,1 cm]
Inv. No. A 10.605

199
Type: *jishiro*
Maple
Technique: *tsukibori*; *itoire*
42,5 × 53,2 cm (34,3 cm)
Inv. No. A 10.727



200
Type: *jishiro*
susuki (*Miscanthus sinensis*) and
hagi (*Lespedeza bicolor*)
Technique: *tsukibori*; *itoire*
42,7 × 53 cm (34,4 cm)
Inv. No. A 10.703

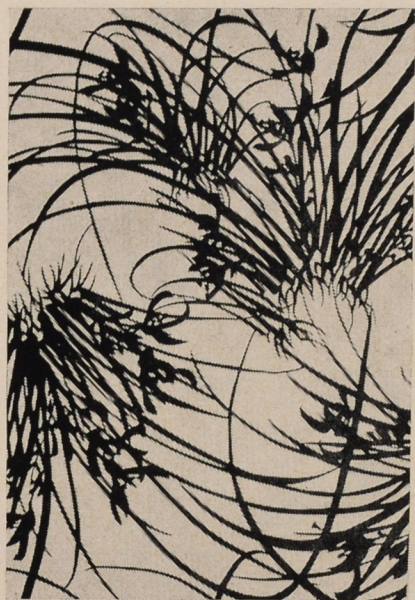


201
Type: *jishiro*
Chrysanthemum flowers
Technique: *tsukibori*; *itoire*
41,4 × 54,6 cm (34,2 cm)
Inv. No. A 10.020



202
Type: *jishiro*
Chrysanthemum flowers
Technique: *tsukibori*; *itoire*
36,3 × 47 cm (34 cm)
Inv. No. A 10.023





203
Type: *jishiro*
Bunches of irises
Technique: *tsukibori; itoire*
41,6 × 53,8 cm (35,1 cm)
Inv. No. A 10.609



204
Type: *jishiro*
Pines
Technique: *tsukibori; itoire*
42,2 × 54,7 cm (35 cm)
Inv. No. A 10.006

b) Silhouettes with More
or Less Pronounced Three-
Dimensional Effect



205
Type: *jishiro*
Rice plant
Technique: *tsukibori; itoire*
32,5 × 48, cm (28,5 cm)
Inv. No. A 10.007

206

Type: *jishiro*

Chrysanthemum flowers

Technique: *tsukibori; itoire*

31,7 × 42,2 cm (23,4 cm)

Inv. No. A. 10.100



207

Type: *jishiro*

susuki and *hagi*

Technique: *tsukibori; itoire*

30,7 × 40,6 cm (21,2 cm)

Inv. No. A. 10.098



208

Type: *jishiro*

"Seven autumnal herbs"

(*aki no nanagusa*)

Technique: *tsukibori; itoire*

33,9 × 47,4 cm (34,5 cm)

Inv. No. A. 10.107





209
Type: *jishiro*
Autumnal herbs and flowers
Technique: *tsukibori*; *itoire*
33,9 × 47,3 cm (30 cm)
Inv. No. A 10.008



210
Type: *jishiro*
Autumnal herbs
Technique: *tsukibori*; *itoire*
42,6 × 51 cm (34,5 cm)
Inv. No. A 10.658



211
Type: *jishiro*
Wistaria
Technique: *tsukibori*; *itoire*
43 × 53,8 cm (35 cm)
Inv. No. A 10.606

212

Type: *jishiro*

Chrysanthemum flowers in usual and
the so-called *kōrin* conventionalization

Technique: *tsukibori*; *itoire*

42 × 54,5 cm (33,6 cm)

Inv. No. A 10.035



213

Type: *jishiro*

susuki and *kuzu* (*Pueraria hirsuta*)

Technique: *tsukibori*; *itoire*

41,4 × 50,8 cm (34,2 cm)

Inv. No. A 10.753



214

Type: *jishiro*

Begonia?

Technique: *tsukibori*; *itoire*

40,5 × 49 cm (33 cm)

Inv. No. A 10.710





215
Type: *jishiro*
Peonies
Technique: *tsukibori*; *itoire*
41,2 × 52,7 cm (34,2 cm)
Inv. No. A 10.698



216
Type: *jishiro*
Peony, iris, bamboo, pine?
Technique: *tsukibori*; *itoire*
40,7 × 53,2 cm (33,5 cm)
Inv. No. A 10.700



217
Type: *jishiro*
Peonies seen through waves
Technique: *tsukibori*; *itoire*
32,6 × 42,9 cm (22,9 cm)
Inv. No. A 8.693

218

Type: *jishiro*

fuji (wistaria)

Technique: *tsukibori; itoire*

36,3 × 49,5 cm [32,3 cm]

Inv. No. A 8.698



219

Type: *jishiō*

Cucumber

Technique: *tsukibori; itoire*

33 × 46,6 cm [30,5 cm]

Inv. No. A 10.010



220

Type: *jishiro*

Chrysanthemum flowers

Technique: *tsukibori, kiribori; itoire*

42,5 × 63,8 cm [35 cm]

Inv. No. 3.888





221
Type: *jishiro*
Wormeaten oak (?) leaves
Technique: *tsukibori; itoire*
39,5 × 60 cm (33,4 cm)
Inv. No. 3.909



222
Type: *jishiro*
Vine
Technique: *tsukibori; itoire*
39,6 × 63,5 cm (33,5 cm)
Inv. No. 3.917



223
Type: *jishiro*
Vine
Technique: *tsukibori; itoire*
41,3 × 69,2 cm (34,2 cm)
Inv. No. A 8.699

224

Type: *jishiro*

Ivy (? vine) on a fence

Technique: *tsukibori; itoire*

41,8 × 53,2 cm (34,4 cm)

Inv. No. A 10.704



225

Type: *jishiro*

tachiaoi (*Althaea rosea*) at a fence

Technique: *tsukibori; itoire*

40,9 × 62,1 cm (32,5 cm)

Inv. No. 3.894



226

Type: *jishiro*

Pine

Technique: *tsukibori; itoire*

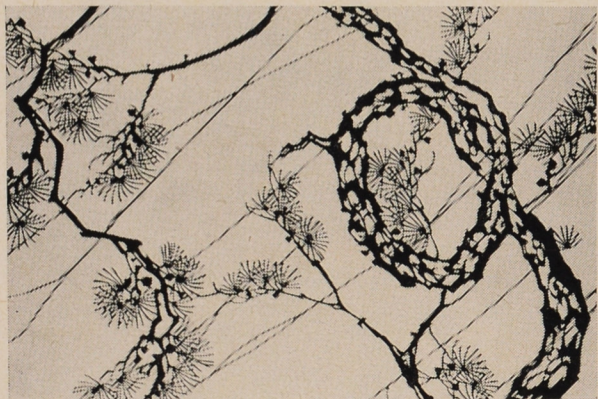
41,8 × 51,7 cm (34,1 cm)

Inv. No. A 10.692

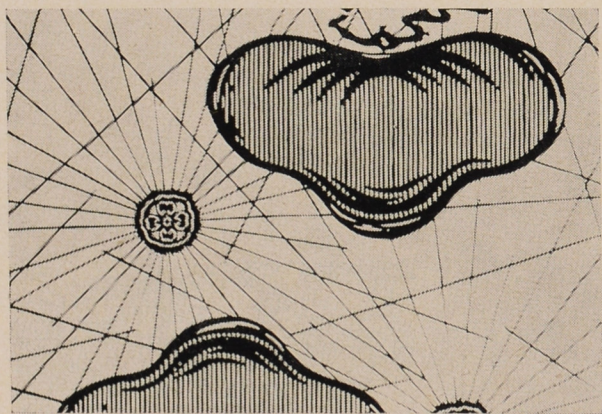




227
Type: *jishiro*
Pines and stone pavement
Technique: *tsukibori*; *itoire*
43,3 × 60,3 cm (32,5 cm)
Inv. No. A 8.700



228
Type: *jishiro*
Twisted pine in rain
Technique: *tsukibori*; *itoire*
50,6 × 34,4 cm (31,2 cm)
Inv. No. A 10.011



229
Type: *jishiro*
Pines against broken halos ?
Technique: *tsukibori*. *ichimaiwa*;
itoire
43,2 × 47,5 cm (34,6 cm)
Inv. No. A 10.746



230
Type: *jishiro*
Young pines
Technique: *tsukibori*; *itoire*
31,3 × 43,6 cm (21 cm)
Inv. No. A 10.464

231

Type: *jishiro*

Bamboo

Technique: *tsukibori; itoire*

43,3 × 63,8 cm (35,1 cm)

Inv. No. 16.441



232

Type: *jishiro*

Bamboo

Technique: *tsukibori; itoire*

41,3 × 43,6 cm (30,1 cm)

Inv. No. A 10.729



233

Type: *jishiro*

Bamboo

Technique: *tsukibori; itoire*

41,8 × 62,6 cm (34,8 cm)

Inv. No. 3.911

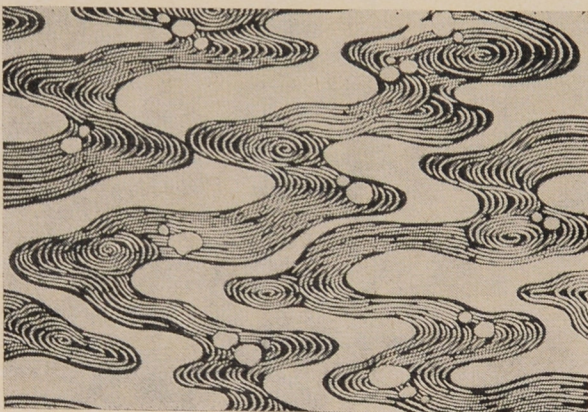




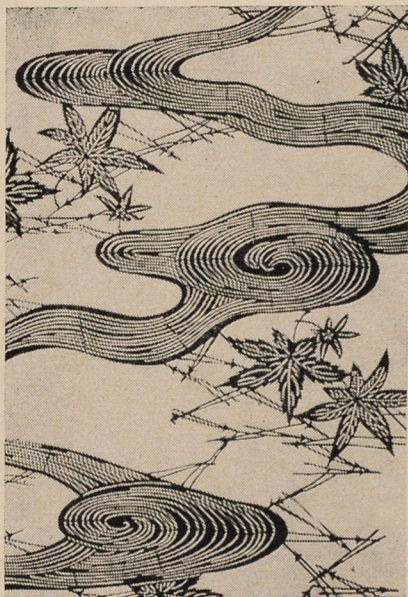
234
Type: *jishiro*
Old plum-tree
Technique: *tsukibori; itoire*
39,5 × 47,3 cm (34,7 cm)
Inv. No. A 8.697



235
Type: *jishiro*
Whirlpool
Technique: *tsukibori; itoire*
41,2 × 58,3 cm (32,9 cm)
Inv. No. A 10.747



236
Type: *jishiro*
Kōrin-style waves
Technique: *tsukibori; itoire*
40,4 × 41 cm (29 cm)
Inv. No. A 10.741

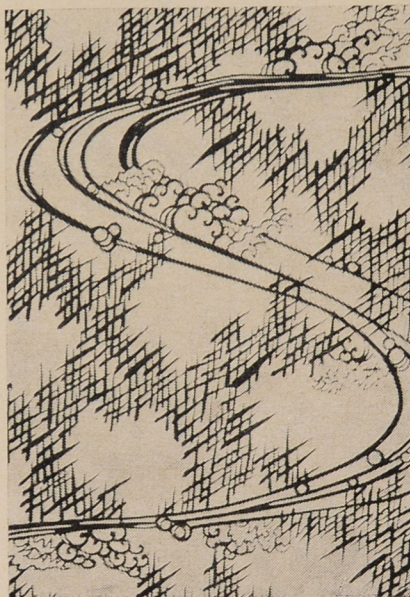


237
 Type: *jishiro*
Tatsutagawa (maple leaves in waves)
 and pine needles
 Technique: *tsukibori*; *itoire*
 41,8 × 49,4 cm (34,1 cm)
 Inv. No. A 10.740



238
 Type: *jishiro*
 Irises and water stream
 Technique: *tsukibori*; *itoire*
 41,8 × 49,4 cm (34,1 cm)
 Inv. No. A 10.687

239
 Type: *jishiro*
 Wave
 Technique: *tsukibori*; *itoire*
 41,6 × 51,5 cm (34,3 cm)
 Inv. No. A 10.743





240
Type: *jishiro*
Waves
Technique: *tsukibori; itoire*
41,3 × 59,5 cm (33,8 cm)
Inv. No. A 8.689



241
Type: *jishiro*
Tatsutagawa (maple leaves in a stream)
Technique: *tsukibori; itoire*
41,6 × 51,7 cm (34,2 cm)
Inv. No. A 10.067



242
Type: *jishiro*
Anchor and ropes in waves
Technique: *tsukibori, kiribori, dōgubori; itoire*
42 × 50,8 cm (34,7 cm)
Inv. No. A 10.612



243
 Type: *jishiro*
 Peonies and waves
 Technique: *tsukibori*; *itoire*
 41,8 × 65,8 cm (34 cm)
 Inv. No. 3.908



244
 Type: *jishiro*
 Carps in waves
 Technique: *tsukibori*; *itoire*
 43,1 × 53,1 cm (34,7 cm)
 Inv. No. A 10.718

245
 Type: *jishiro*
 Carps in waves, *tatewaku* pattern,
 crane-crests
 Technique: *tsukibori*, *ichimaiwa*;
itoire
 41,6 × 61,5 cm (33,8 cm)
 Inv. No. 31.051



246
 Type: *jishiro*
Yatsubashi (eightfold bridge and
 irises)
 Technique: *tsukibori*; *itoire*
 44 × 41,5 cm (27,8 cm)
 Inv. No. A 10.676





247

Type: *jishiro*

Fan papers and butterflies with
Chinese-bell design against *Kōrin*-style
waves

Technique: *tsukibori*; *itoire*

40 × 52 cm (33,2 cm)

Inv. No. A 10.736



248

Type: *jishiro*

Round fans (*uchiwa*) with various
designs against waves

Technique: *tsukibori*; *itoire*

29,1 × 42 cm (19,5 cm)

Inv. No. 3.884



249

Type: *jishiro*

Mandarin ducks in waves

Technique: *tsukibori*; *itoire*

29,1 × 42 cm (19,5 cm)

Inv. No. 35.528

250

Type: *jishiro*

Lobsters

Technique: *tsukibori; itoire*

41 × 43 cm (30 cm)

Inv. No. A 10.730



251

Type: *jishiro*

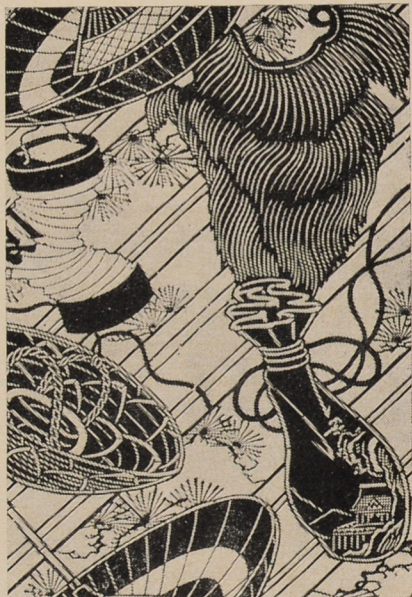
Straw coat, hat, umbrella, bag and lantern against pine in rain

Technique: *tsukibori; itoire*

41 × 50,2 cm (34,4 cm)

Inv. No. A 10.675

Inscription "Bizenya" in ink



252

Maple, clouds, tents

Technique: *tsukibori, kiribori; itoire*

41,6 × 44,2 cm (34,5 cm)

Inv. No. A 10.683





253

Type: *jishiro*

Fans and bamboo plaquette with calligraphy and scenes from nature

Technique: *tsukibori*; *itoire*

42,5 × 64 cm (36 cm)

Inv. No. 3.947



254

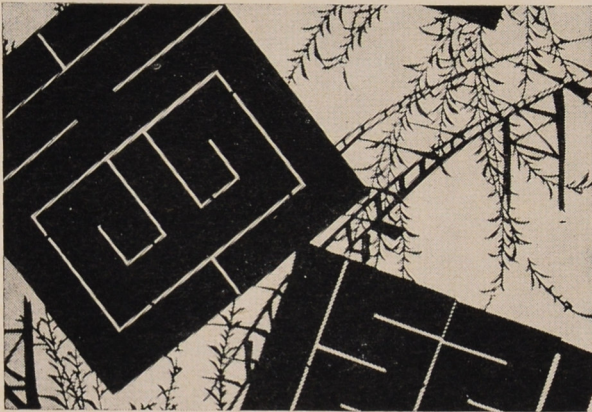
Type: *jishiro*

Fan papers enclosing natural motifs

Technique: *tsukibori*; *itoire*

42,5 × 64 cm (36 cm)

Inv. No. A 10.722



255

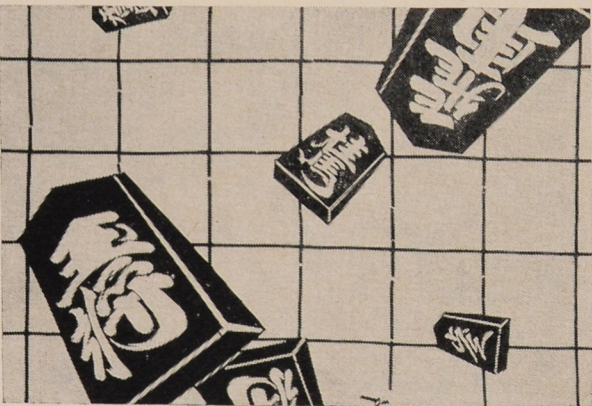
Type: *jishiro*

Large seal-script characters, bridge and willow

Technique: *tsukibori*; *itoire*

40 × 41,1 cm (30,2 cm)

Inv. No. A 10.731



256

Type: *jishiro*

Chess-board and chess-pieces

Technique: *tsukibori*; *itoire*

40 × 42,5 cm (32,5 cm)

Inv. No. A 10.619

257

Type: *jishiro*

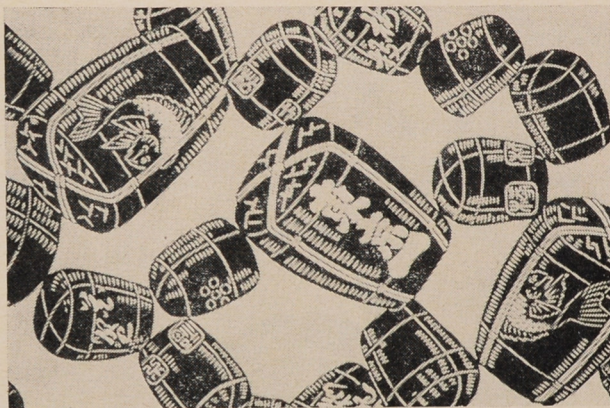
Straw bags with various goods

Technique: *tsukibori, dōgubori; itoire*

41,3 × 62,6 cm (34,6 cm)

Inv. No. 3.940

Meiji period



258

Type: *jishiro*

Fragments of tiles and clouds

Technique: *tsukibori, dōgubori; itoire*

41,1 × 54,6 cm (34,2 cm)

Inv. No. A 10.737



259

Type: *jishiro*

Old screens, family crest enclosing picture scroll, wooing sparrow (*fukura-suzume*) composed of door-handles

Technique: *tsukibori; itoire*

40,1 × 54,7 cm (33,4 cm)

Inv. No. A 10.756





260

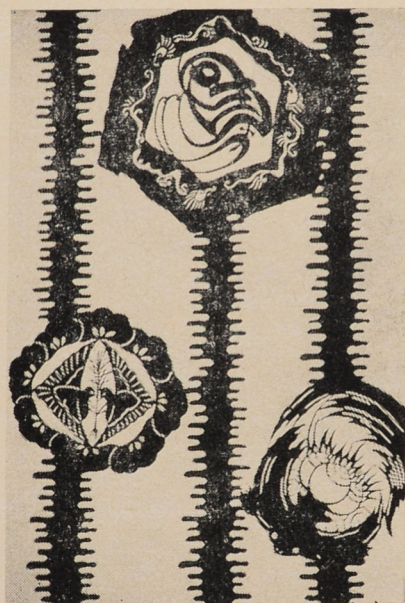
Type: *jishiro*

Two *mon*, fan with oak leaves,
matsukawabishi enclosing ivy leaf

Technique: *tsukibori*; *itoire*

41,1 × 61,7 cm [33, cm]

Inv. No. 3.895



261

Type: *jishiro*

Medallions with symbols of long-
evity, dragons etc. against
trailing-haze stripes

Technique: *tsukibori*; *itoire*

42 × 63 cm [34 cm]

Inv. No. 3.949

262

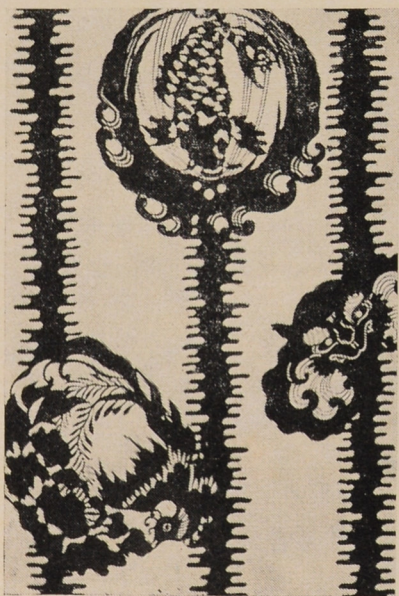
Type: *jishiro*

Medallions with *hōō*, carp in waves,
lion mask against trailing-haze stripes

Technique: *tsukibori*; *itoire*

42 × 62,1 cm [33,9 cm]

Inv. No. 3.890



263

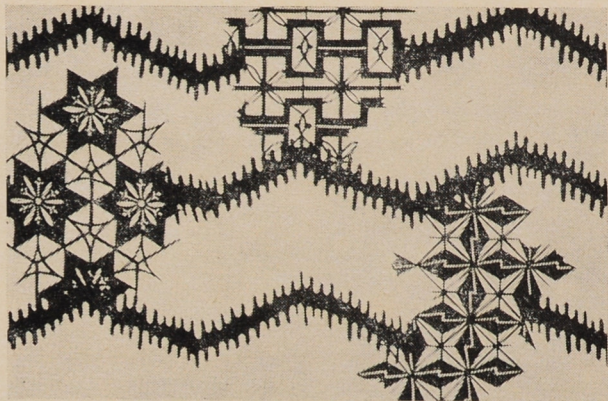
Type: *jishiro*

Fragments of geometric patterns
against trailing-haze zigzag lines

Technique: *tsukibori; itoire*

42,2 × 63,3 cm (34 cm)

Inv. No. 3.914



6. Designs Based on Contrast of Positive and Negative Parts

264a

Type: *jishiro*

Whirlpool

Technique: *tsukibori, kiribori; itoire*

41,8 × 51,8 cm (34,2 cm)

Inv. No. A 10.742

264b

Type: *jishiro*

The same design as 264a

41,8 × 51,8 cm (34,2 cm)

Inv. No. A 10.745



265

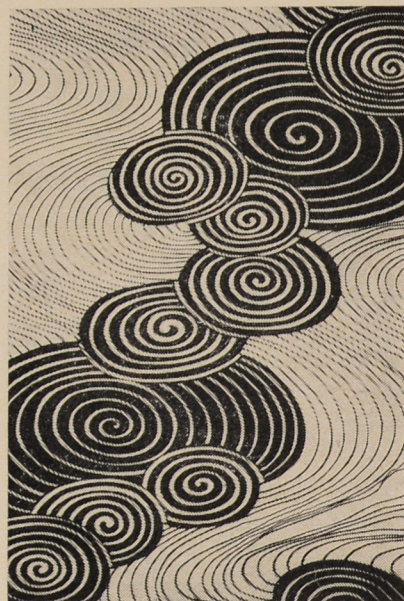
Type: *jishiro*

Whirlpool

Technique: *tsukibori; itoire*

41 × 51,6 cm (33,9 cm)

Inv. No. A 10.005



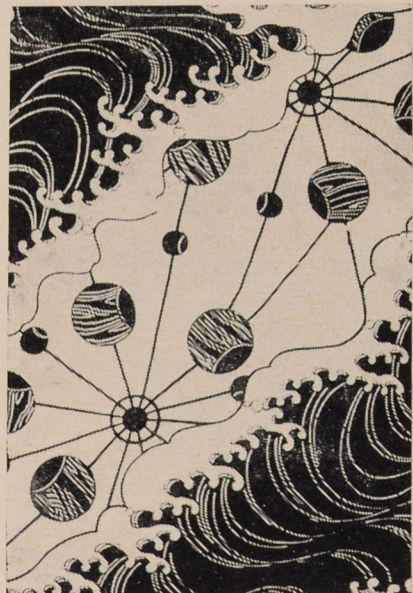


266
 Type: *jishiro / jizomari*
 Waves
 Technique: *tsukibori; itoire*
 38,9 × 41,1 cm (27,7 cm)
 Inv. No. A 10.069



267
 Type: *jishiro*
 Water stream and sea-side scenery
 Technique: *tsukibori; itoire*
 40,7 × 50,1 cm (34,1 cm)
 Inv. No. A 10.070

268
 Type: *jishiro / jizomari*
 Water-wheels (*mizuguruma*) and waves
 Technique: *tsukibori; itoire*
 41,1 × 54,5 cm (34,2 cm)
 Inv. No. A 10.739



269
 Type: *jishiro / jizomari*
 Water-wheels, plovers and waves
 Technique: *tsukibori; itoire*
 41,5 × 51,3 cm (34,5 cm)
 Inv. No. A 10.040
 Inscription "*Bizenya*", "*Kyū*"





270
 Type: *jishiro / jizomari*
 Water-wheels, carps and waves
 Technique: *tsukibori, kiribori; itoire*
 42,3 × 61,3 cm (34,5 cm)
 Inv. No. 3.892



271
 Type: *jishiro / jizomari*
 Blooming plum, court cap, scroll,
 letter, spear
 Technique: *tsukibori; itoire*
 40,7 × 51,2 cm (34,1 cm)
 Inscription "Bizenya" in ink, trade
 mark "Kyū"
 Inv. No. A 10.066

272
 Type: *jishiro / jizomari*
 Pine, straw sandal, camellia, lacquer
 box, wooden lantern, umbrella, scroll
 of calligraphy
 Technique: *tsukibori; itoire*
 40,3 × 50,2 cm (34,1 cm)
 Inv. No. A 10.650



273
 Type: *jishiro*
 Umbrellas and weeping willow
 Technique: *tsukibori; itoire*
 41,3 × 55 cm (34,7 cm)
 Inv. No. A 10.708





274
 Type: *jishiro / jizomari*
 Pine and cobweb
 Technique: *tsukibori; itoire*
 40,7 × 54,3 cm (34,6 cm)
 Inv. No. A 10.608



275a
 Type: *jishiro*
 Old fans, pines, trailing haze
 Technique: *tsukibori; itoire*
 50,9 × 54 cm (33,8 cm)
 Inv. No. A 10.725

275b
 Type: *jishiro*
 The same design as 275a
 413 × 54,6 cm (34,7 cm)
 Inv. No. A 10.690

276
 Type: *jishiro*
 Pines seen through haze
 Technique: *tsukibori; itoire*
 40,8 × 51,4 cm (34,2 cm)
 Inv. No. A 10.672



277
 Type: *jishiro*
 Irregular cloud-shaped medallions
 enclosing various motifs against
 weeping willow
 Technique: *tsukibori; itoire*
 42,2 × 50,2 cm (34,8 cm)
 Inv. No. A 10.659





278
 Type: *jishiro / jizomari*
 Cock, hen and cages, fishing nets
 and pines
 Technique: *tsukibori; itoire*
 41,2 × 51,2 cm (34,4 cm)
 Inv. No. A 10.685
 Inscription "Bizenya" in ink



279
 Type: *jishiro / jizomari*
 Pine
 Technique: *tsukibori; itoire*
 41,1 × 54 cm (34,9 cm)
 Inv. No. A 10.684

280
 Type: *jishiro / jizomari*
 Chrysanthemum flowers, maple leaves,
 pine
 Technique: *tsukibori; itoire*
 40 × 50,5 cm (33,7 cm)
 Inv. No. A 10.660



281
 Type: *jishiro*
 Kites, hanks, pine
 Technique: *tsukibori; itoire*
 41,3 × 55 cm (34,2 cm)
 Inv. No. A 10.682



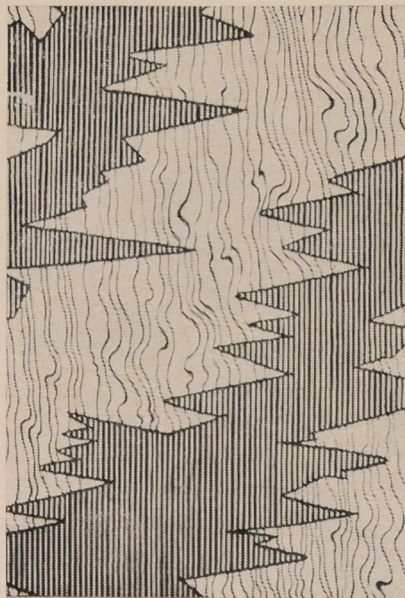


282
 Type: *jishiro*
 Pine and stripes of zigzag lines
 Technique: *tsukibori*; *itoire*
 42 × 61,8 cm (34,9 cm)
 Inv. No. A 8.691



283
 Type: *jishiro* / *jizomari*
susuki and *hagi* and stripes of *ajiro*
 pattern delineated by irregular zigzag
 lines
 Technique: *tsukibori*; *itoire*
 31,3 × 41,8 cm (19,2 cm)
 Inv. No. A 8.694

284
 Type: *jishiro* (*shima*?)
 Areas of fine stripes and irregular
 wavy lines imitating wood
 Technique: *tsukibori*, *hikibori*; *itoire*
 43 × 47,3 cm (34,2 cm)
 Inv. No. A 10.657



285
 Type: *jishiro* / *jizomari*
 Chrysanthemum against bamboo stems.
kasuri effect
 Technique: *tsukibori*; *itoire*
 41 × 62 cm (33,5 cm)
 Inv. No. 3.935



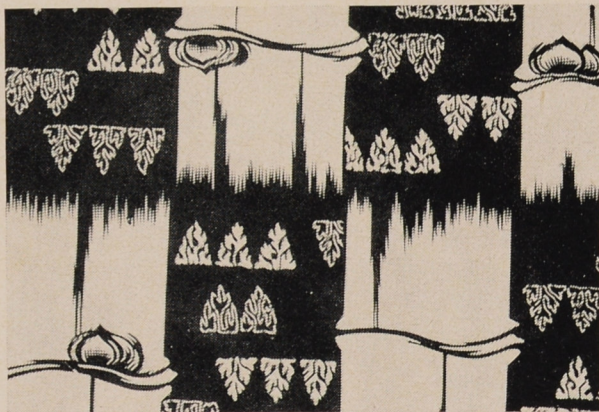
286

Type: *jishiro / jizomari*
Bamboo and fragmentary *kikkō*
pattern; *kasuri* effect
Technique: *tsukibori; itoire*
40,7 × 62,8 cm (33,5 cm)
Inv. No. 3.910



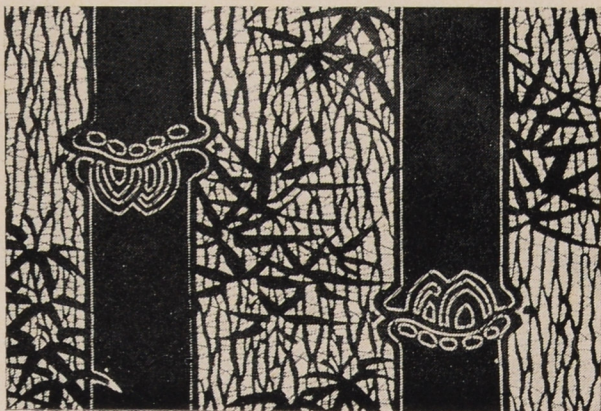
287

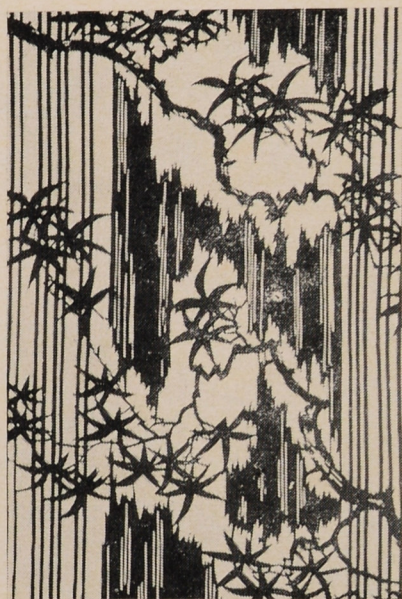
Type: *jishiro / jizomari*
Seaweed against bamboo stems
Technique: *tsukibori; itoire*
37,3 × 41 cm (25,5 cm)
Inv. No. A 10.667



288

Type: *jishiro*
Bamboo
Technique: *tsukibori; itoire*
31,2 × 39,8 cm (21,4 cm)
Inv. No. A 10.621





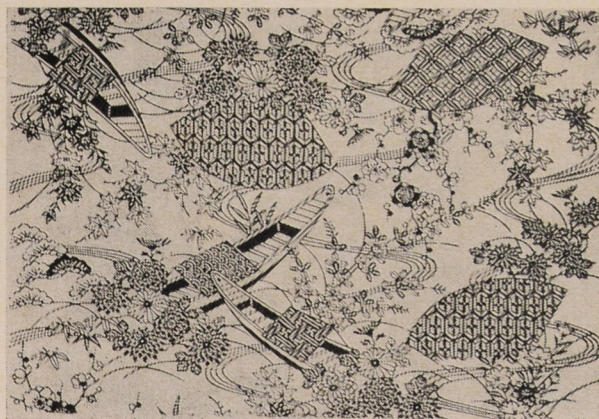
289a
 Type: *jishiro*
 Maple against tree trunk and stripes;
kasuri effect
 Technique: *tsukibori*; *itoire*
 36,6 × 49,8 cm (31,1 cm)
 Inv. No. A 10.016

289b
 Type: *jishiro*
 The same design as 289a
 345,7 × 49,8 cm (28,7 cm)
 Inv. No. A 10.013



290
 Type: *jishiro*
 Bamboo stalks bearing various motifs
 Technique: *tsukibori*; *itoire*
 41,5 × 61,8 cm (35,2 cm)
 Inv. No. 3.889

7. Modern Stencils



291
 Type: *jishiro*
 Boats, water stream, chrysanthemum,
 plum, maple, bamboo, Chinese bell-
 flower, *hagi*, fans, geometrical patterns
 Technique: *tsukibori*, *kiribori*,
dōgubori; *shabari*
 50,9 × 49,5 cm (36 cm)
 Inv. No. A 11.267
 Author: Nambu Yoshimatsu, Jike



292

Type: *jishiro*

Country houses, *shōchikubai*, *sakura*,
water stream, *aoi*, irises; *bingata* style
Technique: *tsukibori*, *kiribori*,
ichimaizuki; *shabari*

54 × 85,5 cm (35,3 cm)

Inv. No. A 10.115



293

Type: *jishiro*

sakura, trailing haze bearing *asanoha*
pattern, *shōchikubai* medallions
Technique: *tsukibori*, *kiribori*,
dōgubori; *shabari*

53,8 × 69 cm (35,8 cm)

Inv. No. A 10.113

294

Type: *jishiro*

Peony and fence, *shōchikubai*, snow-
laden bamboo leaves, *matsukawabishi*,
plum blossom

Technique: *tsukibori*, *kiribori*; *shabari*

57,3 × 53,2 cm (35 cm)

Inv. No. A 10.112



Index of Japanese Terms

- ajiro* — pattern resembling the texture of matwork woven in linen weave
- amime* — network pattern
- aoi* — more precisely *futaba-aoi*, wild ginger, *Asarum caulescens*
- asanoha* — star-like pattern resembling hemp-leaf
- bingata* — colourful dyed fabric of Okinawa
- bishamon-kikkō* — pattern consisting of three hexagons
- chūgata* — stencil used mainly for dyeing *yukata* (unlined summer-wear) cloth
- dōgubori* — method of stencil carving using tools with points in shape of small ornamental units
- fuji* — wistaria
- fundō* — balance weight, one of the “precious things”
- genjikō* — marks indicating various kinds of incense wood
- gyōgi* — dots arranged regularly in oblique lines
- hagi* — Japanese bush clover, *Lespedeza bicolor*
- higaki* — pattern resembling the texture of diagonally woven matwork
- hikibori* — method of carving stripes in *katagami*
- hōō* — mythical bird, phoenix
- ichimaiwa* — *ichimaizuki* technique using tools with rounded blade
- ichimaizuki* — blade-width thrusting method of *katagami* carving
- igeta* — a well kerb pattern, parallel crosses
- inazuma* — “lightning” design, lozenge-shaped angular spirals
- irekobishi* — concentric lozenges
- itoire* — method of reinforcing *katagami* with a mesh of silk threads
- itokake* — reinforcing *katagami* by sewing with silk thread
- jishiro* — a type of *chūgata*, positive design on white background
- jizomari* — a type of *chūgata*, negative design on coloured background
- kagome* — basketwork pattern
- karahana* — “Chinese flower”, conventionalized flower consisting of four petals
- karakusa* — “Chinese grass”, conventionalized tendril pattern
- kasuri* — Indonesian ikat, reserve dyeing method resulting in design with blurred outlines
- katagami* — paper stencil

kawari masugata — interchanging *masugata* (squares divided into triangles) diaper
keshigata — one of two stencils necessary for dyeing of complicated patterns of (mainly) *kojishiro* type
kikkō — “tortoise shell”, regular hexagon pattern
kiri — *Paulonia imperialis*
kiribori — awl-cutting technique
kojishiro — small patterns on white background
kōshi — lattice
manjitsunagi — key fret diaper
matsukawabishi — pine-bark lozenges
mizuguruma — drawing water-wheel
mizuhiki — fine ornamental paper strings
mon — family crest
moyō kewan — patterns formed of elements resembling cane stalks
nimai jishiro — pattern dyed by combination of two *jishiro* stencils
noshi — congratulatory paper-strips bundles accompanying gifts
raimon — “lightning” pattern
sakura — cherry
seigaiha — conventionalized waves made up of concentric semi-circles
shabari — strengthening of the *katagami* by gauze
shima — stripe, stencil with striped pattern
shippō — “seven precious things”, pattern of interlocking circles
shōchikubai — pine, bamboo and plum, “three friends of the cold season”
shokkō — regular “brocade” pattern composed of octagons and squares
susuki — Japanese pampas grass, *Miscanthus sinensis*, one of the “seven autumnal herbs”
tatewaku — pattern of parallel, alternately arranged wavy lines
Tatsutagawa — river in Yamashiro province, celebrated by a poem of Ariwara no Narihira
tōshi — dots arranged in vertical lines
tsukibori — thrust-cutting technique
Yatsunashi — “eightfold” bridge, famous spot in Mikawa province celebrated in Ise monogatari
yōrō shima — tottering stripes, pattern very difficult to carve and dye
Yoshinogawa — river in Yoshino region of the Yamato province famous for sakura blossoms