

# SBORNÍK NÁRODNÍHO MUSEA V PRAZE

ACTA MUSEI NATIONALIS PRAGAE

Vol. XI. B (1955) No. 2.

Botanica No. 1.

---

---

REDAKTOR IVAN KLÁŠTERSKÝ

ALBERT PILÁT:

HYMENOMYCETES NOVI VEL MINUS COGNITI ČECHOSLOVAKIAE III.

PRAHA 1955

NÁKLADEM NÁRODNÍHO MUSEA V PRAZE

V GENERÁLNÍ KOMISI MATICE ČESKÉ, PRAHA II-1700, VÁCLAVSKÉ NÁM.

# Sborník Národního musea v Praze - Acta Musei Nationalis Pragae

řada B, přírodovědecká

Series B, Historia Naturalis

byl založen r. 1938. První tři ročníky, I. 1938, II. 1940 a III. 1947, vyšly jako souborné svazky (jednotlivé práce lze však koupiti také separátně) a obsahují následující práce vesměs v cizích jazycích s českou předmluvou:

was founded in 1938. The first three volumes I-1938, II-1940, and III-1947 have been published each comprising several papers which may be obtained also separately. The three volumes contain the following papers, each in a foreign language and with a Czech preface:

- I. (1938): 1. O. Štěpánek: Nová geografická rasa *Ablepharus pannonicus* Fitzinger. (Tab. I.) — Eine neue geographische Rasse von *Ablepharus pannonicus* Fitzinger (Tab. I.) (Kčs 0.70). 2. F. Němejc: Příspěvek k poznání vrchnokarbonických *Archaeopteridů* středních Čech. (Tab. II.—III.) — Contribution to the knowledge of the *Archaeopterides* of the Upper Carboniferous in Central Bohemia. (Tab. II.—III.) (Kčs 0.86). 3. M. Deyl: Československé druhy rodu *Sesleria*. — Die čechoslovakischen *Sesleria*-Arten. (Kčs 1.56). 4. J. Mařan: O geografickém rozšíření a rasách druhů *Nebria taygetana* Rottb. a *aetolica* Apf. — De *Nebriae taygetanae* Rottb. et *aetolicae* Apf. variatione et distributione geographica. (Coleoptera - Carabidae.) (Kčs 0.60). 5. I. Klášterský: Růže z černohorského herbáře Jos. Rohleny. — *Rosae montenegrinae* ex herbario Jos. Rohlena. (Kčs 0.84). 6. F. Prantl: Revize českých Fytoproteridů Reptariidů (Mechovky). (Tab. IV.) — Revision of the Bohemian Paleozoic Reptariidae (Bryozoa). (Tab. IV.) (Kčs 0.82). 7. K. Tuček: Dva zajímavé typy phillipsitu z žedíků v severovýchodních Čechách. — Two interesting Types of Phillipsite from the Basalts of N.-E. Bohemia. (Kčs 0.36). 8. K. Táborský: Monografická studie bulharských Embioidů. (Tab. V.) — Monographische Studien über die bulgarischen Embioiden. (Tab. V.) (Kčs 2.02). 9. Vl. Zázvorka: *Trogontherium cuvieri* Fischer od Přezletic (Střední Čechy) a porovnání s ostatními známými nalezišti *Trogontherií* v Evropě. (Tab. VI.) — *Trogontherium cuvieri* Fischer from Přezletice (Central Bohemia) and a comparison with the other known localities of *Trogontherium* in Europe. (Tab. VI.) (Kčs 1.98). 10. A. Pilát: Seznam druhů hub, popsaných A. C. J. Cordou s udáním originálních exemplářů, které jsou uloženy v herbáři Národního musea v Praze. — Liste der von A. C. J. Corda beschriebenen Pilzarten, mit Angabe der Original-exemplare, die im Herbarium d. Nationalmuseums in Prag aufbewahrt sind. (Kčs 0.94). 11. J. Obenberger: Studie o druzích rodu *Anthaxia* Eschsch. (Col. Bupr.). — Etudes sur les espèces du genre *Anthaxia* Eschsch. (Col. Bupr.). (Kčs 4.80).
- II. (1940): 1. F. Němejc: The *Pecopterides* of the coal districts of Bohemia. (Kčs 1.68). 2. Jos. Mařan: Příspěvek k poznání geografického rozšíření a rasového cyklu *Zabrus aetolus* Schaum. — Beitrag zur Kenntnis der geografischen Verbreitung und Rassebildung bei *Zabrus aetolus* Schaum. (Coleoptera, Carabidae.) (Kčs 0.42). 3. Alb. Pilát: *Hymenomyces Carpatum orientaliolum*. (Kčs 2.64). 4. Ferd. Prantl: Ordovické a silurské mechovky z Montagne Noire (Languedock). — Some Ordovician and Silurian Bryozoa from Montagne Noire (Languedock). (Kčs 1.76). 5. O. Štěpánek: Herpetologie ostrovů *Gaudos* a *Dia*. — *Materiae herpetologicae in insulis Gaudos et Dia collectae*. (Kčs 0.24). 6. J. Obenberger: Ad regionis palaearticae *Buprestidarum* cognitionem additamenta. — Studie o palaeartických krasech (Col. Bupr.). (Kčs 4.74). 7. Vl. Zázvorka: *Deinotherium levius* Jourdan a jeho stratigrafický význam. (Kčs 1.74). 8. R. Rost: O českých copiapitech. (Kčs 0.64).
- III. (1947): 1. F. Prantl a Alois Příbyl: Rozřídění některých českých *Cheiruridů* (*Trilobitae*). — Classification of some Bohemian *Cheiruridae* (*Trilobitae*). (Kčs 16.40). 2. F. Němejc: *Lepidodendraceae* středoevropských uhelných pánví. — The *Lepidodendraceae* of the coal-districts of Central Bohemia. (Kčs 6.40). 3. J. Bechyně: Příspěvek k poznání rodu *Phytodecta* Kirby. — Additamenta ad cognitionem specierum generis *Phytodecta* Kirby (Col. Phytoph. Chrysomelidae). (Kčs 10.—). 4. J. Mařan: O geografickém rozšíření a rasách druhu *Procrustes banoni* Dej. — De distributione et variatione geographica speciei *Procrustes banoni* Dej. (Kčs 1.—). 5. J. Mařan: Rasový cyklus geografického druhu *Zabrus oertzeni* Rtt. — De variatione et distributione geographica speciei *Zabrus oertzeni* Rtt. (Kčs 1,60).

Cena celých svazků je: I (1938) Kčs 14.—, II (1940) Kčs 14.—, III (1947) Kčs 25.—.

Price per volume: I (1938) Kčs 14.—, II (1940) Kčs 14.—, III (1947) Kčs 25.—.

# SBORNÍK NÁRODNÍHO MUSEA V PRAZE

ACTA MUSEI NATIONALIS PRAGAE

Vol. XI. B (1955) No. 2.

Botanica No. 1.

---

REDAKTOR IVAN KLÁŠTERSKÝ

ALBERT PILÁT:

HYMENOMYCETES NOVI VEL MINUS COGNITI ČECHOSLOVAKIAE III.

PRAHA 1955

NÁKLADEM NÁRODNÍHO MUSEA V PRAZE

V GENERÁLNÍ KOMISI MATICE ČESKÉ, PRAHA II-1700, VÁCLAVSKÉ NÁM.

ALBERT PILÁT:

## Hymenomycetes novi vel minus cogniti Čechoslovakiae III.

(Allatum 29. XII. 1954)

In tractatu hodierno seriem tertiam adnotationum ad fungos, quos ipse anno 1954 legi vel quos ab amicis meis e diversis regionibus Čechoslovakiae obtinui, promo\*.)

Collecta pulchra praesertim amicus meus Dr. Wichanský e horto publico „Kinského sady“ dicto, Pragae, attulit. Haec localitas Pragensis admodum opulenta est. Praecipue species copiosae generis *Lepiota* ibi quotannis apparent.

### *Lepiota acutesquamosa* Weinm. ex. Fr. f. *gigantea* n. f.

A cel. Eberle e vicinitate urbis Nový Bydžov, Bohemiae, formam conspectam maximamque obtinui. Specimen unum pileum 18 cm diam. habuit, superficie brunneum, pulchre squamosum, areolis hexagonis irregularibus, pallidius marginatis ornatum. Lamellae confertissimae, angustae, solum 4 mm altae. Stipes 150 mm longus et 35 mm crassus, pallide brunneus, irregulariter gossypino-arachnoideus, anulo irregulari, obliquo, gossypino-membranaceo ornatus. Sporae majores quam in typo, subconico-cylindraceo-ellipsoideae, apicem versus angustatae, apiculo sublaterali provisae, hyalinae, laeves,  $8-9 \times 3.5 \mu$ . Differt a typo dimensionibus et sporis majoribus.

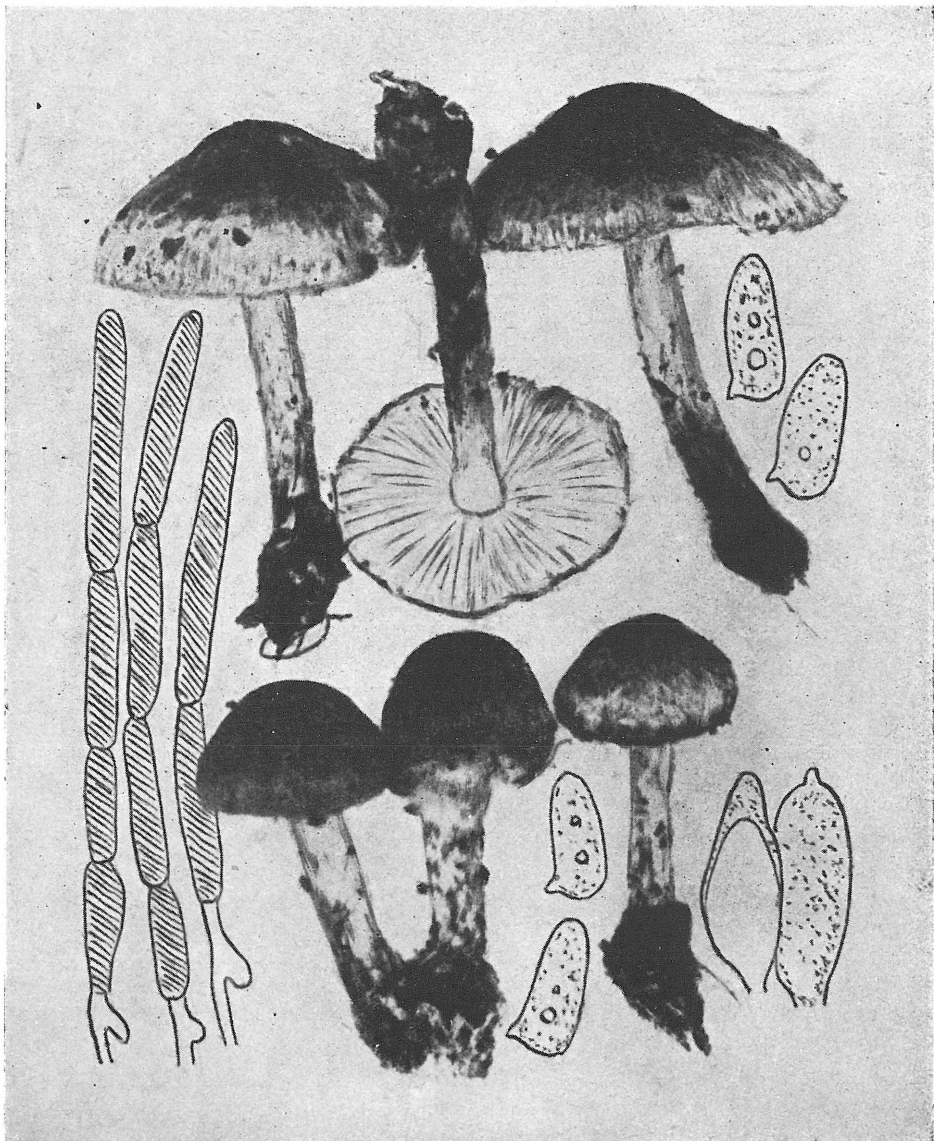
### *Lepiota castanea* Quélet.

Fig. 1.

Pileus 25—40 mm diam., e late conico expansus et adultus umbone lato planoque notatus, squamulis distinctis, laete rufo-ferrugineis, acutis et adpressis, ad cacuminem confertis, ad marginem sparsioribus, ad carnem albidam iacentibus instructus. Margo pilei tenuis, lamellas aliquantum superans.

\*) A. Pilát: Hymenomycetes novi vel minus cogniti Čechoslovakiae I, *Studia Botanica Čechoslovaca* 12 : 1—72, Pragae 1951. — II. *Acta Musei Nationalis Pragae*, vo IXB. No. 2, pp. 1—109, tab. I—X, Pragae 1953.





1. *Lepiota castanea* Quél.

Praha-Kinského sady, 6. X. 1954, leg. Dr. Wichanský. Sinistra pili e squamulis; dextra spores et cheilocystidia. Foto A. Pilát.

Lamellae albae vel tinctu pallide lutescenti, liberae, acie concolores, haud denticulatae.

Stipes 35—45 × 2.5—4.5 mm, cylindraceus, rectus vel parte inferiori parum curvatus, basi subincrassatus, cavus, parte inferiori conferte rubro-ferrugineo-floccoso-squamulosus (reliquiae veli), absque anulo

distincto et absque limite distincto anulari, apice sericeus et cremeo-fuscidulus, basi funiculis mycelialibus tenuibus et albis instructus.

Caro albida vel minime fuscidula, odore et sapore haud amoenis. Basidia tetraspora. Cheilocystidia in acie lamellarum late clavata usque subglobosa vel sublageniformia, quam basidia crassiora, tenuiter tunicata, hyalina,  $27-37 \times 10-15 \mu$  magna. Squamula ferruginea in pilei superficie e pilis ferrugineis, tenuiter tunicatis,  $9-15 \mu$  crassis, septatis et e  $2-5$  cellulis compositis, rarius unicellularibus constant.

Sporae in cumulo albae, sub microscopio hyalinae, laeves, ellipsoideo-fusoideae, distincte calcaratae,  $8.5-9.5 \times 3.8-4.2 \mu$ .

Hab. ad terram in fruticetis in horto publico „Kinského sady“ dicto, Praegae, 15. X. 1954, leg. Dr. Wichanský. Duodecim exemplaria vidi.

Fungus pragensis descriptus colore cum *Lepiota ignicolori* Bresadola sensu Loquin 1945 (= *L. ignipes* Loquin), ut eam Kühner in Bulletin de la Société Mycologique de France, 53 : tab. 74—II, 1937 sub nomine *Lepiotae castaneae* Quéél. depinxit et Loquin in Bulletin de la Société Linnéenne de Lyon 14 : 59, 1945 descripsit, concordat. Idem convenit cum *Lepiota castanea* sensu Lange, Flora Agar. Danica, t. 12G, 1935, sed squamulas pilei e hyphis septatis habet, quos pilos Loquin, Kühner et Romagnesi pro *Lepiotam castaneam* typicam characteristicos esse putent. *Lepiota castanea* Quéél. typica sensu auctorum commemoratorum pileo magis sordide fusco discrepare solet. Sed iam Kühner et Romagnesi commemorant formas intermedias inter ambis „speciebus“. Haud dubito, quin *Lepiota ignipes* Loquin non species bona, sed solum forma laetius colorata *Lepiotae castaneae* sit. Pili unicellulares vel pluricellulares, e quibus squamae pilei constant, aegre characteres specifici sunt, nam numerus cellularum variat. Exemplaria nostra characteres ambarum „specierem“ unificant, nam pilos pluricellulares ut *Lepiota castanea* Quéél. et colorem laetiozem ut *Lepiota ignipes* Loquin habent.

### ***Lepiota cygneo-affinis* n. sp.**

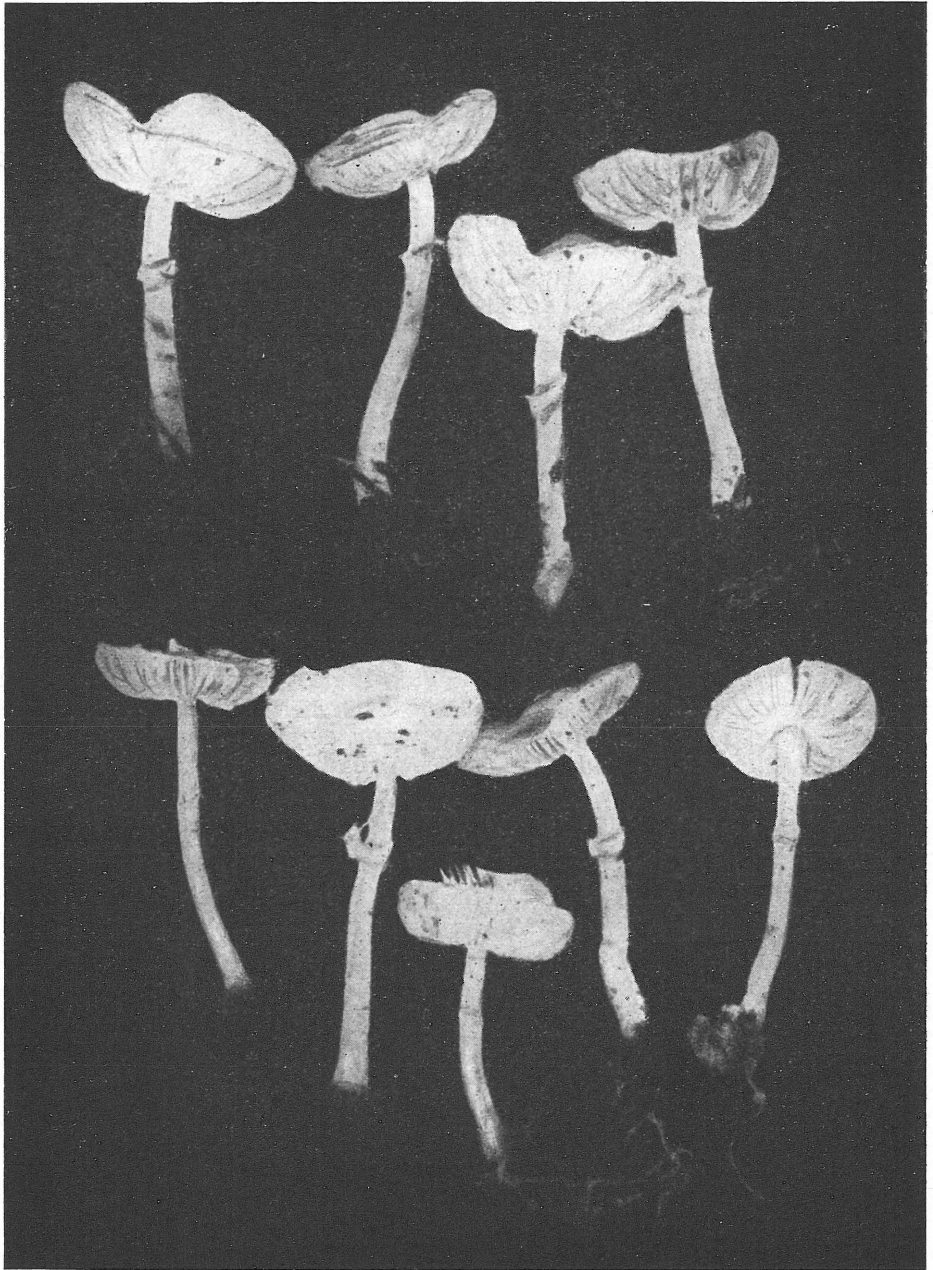
Fig. 2—3.

Pileus  $10-15$  mm diam., candidus, adultus tinctu debili subochraceo, glaber, esquamulosus, sericeo-fibrillosus et sericeo-lucidus, e convexo mox planus, adultus margine suberectus et paulum undulatus, centro depressus, sed cacumine umbone humili, distincto notatus. Fibrillae in pilei superficie parte marginali remotae, qua de causa cutis pilei marginalis sub lente radialiter subrimosa est.

Lamellae albae, 3 diversae longitudinis, ventricosae, liberae et ad stipitem rotundatae, parte tertia, stipiti proxima, latissimae, tenuissimae, basi  $150 \mu$  crassae, acie  $60 \mu$  crassae, cum trama parte basali  $100 \mu$  crassa et parte aciali solum  $30 \mu$  crassa.

Stipes cavus,  $20-27$  mm longus et  $1.5-2$  mm crassus, cylindraceus, laevis, albus, basi fere haud incrassatus, sericeo-fibrillosus, parte tertia superiori anulo membranaceo, colariformiter patente et suberecto, etiam statu adulto distincto, instructus.

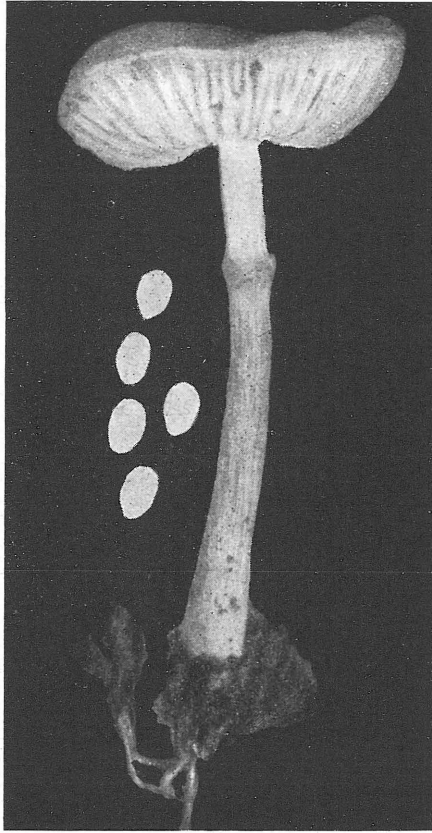
Caro alba, pilei tenuissima ( $150-200 \mu$ ), stipitis fibrillosa, odore fungineo, debili et sapore miti.



2. *Lepiota cygneo-affinis* Pilát.  
Praha-Kinského sady, 12. IX. 1954, leg. Dr. Wichanský. Foto A. Pilát.

Cystidia nulla. Basidia tetrasterigmatica, globoso-clavata,  $10-12 \times 5-5.5 \mu$ .

Hyphae tramae lamellarum hyalinae, tenuiter tunicatae, in acie lamellarum  $2-3.5 \mu$  crassae, in pileo irregulariter coralliformiter ra-



3. *Lepiota cygneo-affinis* Pilát.

Praha-Kinského sady, 12. IX. 1954, leg.

Dr. Wichanská. Specimen magnif.

Dr. Wichanský. Specimen magnif.

Foto A. Pilát.

mosae, e cellulis brevibus compositae et contextum fere pseudoparenchymaticum formantes. Hic contextus ex parte usque in tramam lamellarum penetrat. Trama lamellarum e cellulis magis elongatis et aciem versus tenuioribus constat.

Sporae ovoideo-ellipsoideae, hyalinae, laeves, apiculo parvo minitae,  $3.5-4.5 \times 2-2.5 \mu$  magnae.

Hab. in fruticetis ad terram in horto publico „Kinského sady“ dicto, Praegae, solo calcifero, 12. IX. 1954, cel. Dr. Wichanský legit.



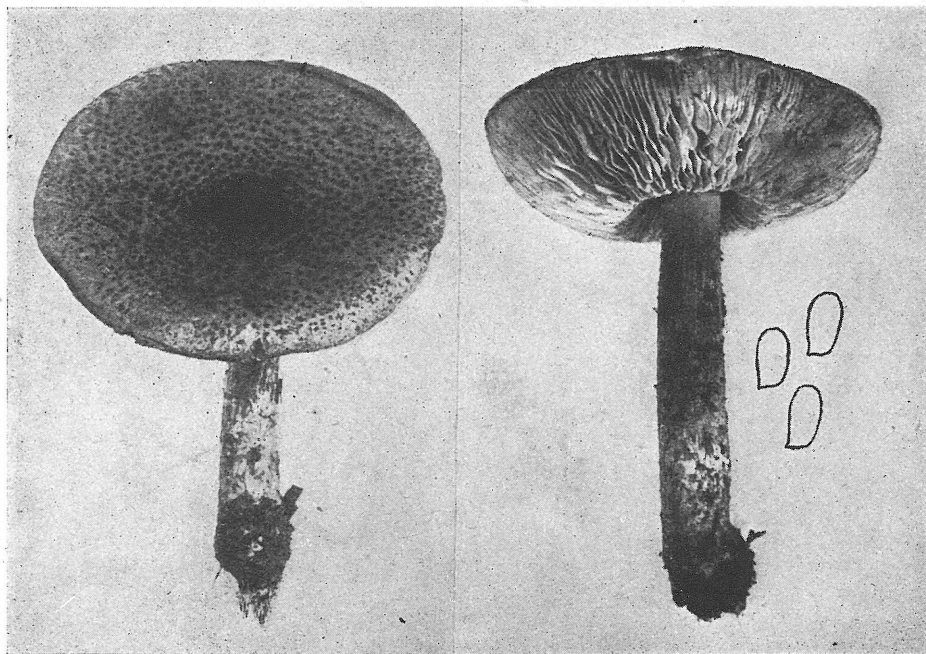
Species parva, sed conspecta, *Lepioteae cygnea* Lange (Fl. Agar. Danica, 1 : 35, t. 13A, 1953) proxime affinis. A specie commemorata, quam etiam Huysman in Medd. Nederl. Mycol. Ver. 28 : 51, 1943 describit, praecipue sporis conspecte minoribus discrepat. *Lepiota cygnea* teste Huysman sporas 5.8—6.9×3.5—4.1, teste Lange l. c. 6.5×3.5  $\mu$  magnas habet. Etiam forma pilei, stipite relativiter longiori et absentia cheilocystidiorum in acie lamellarum species nostra nova dignoscitur. Typus in herbario Musei Nationalis Pragae asservatur.

***Lepiota echinacea* Lange.**

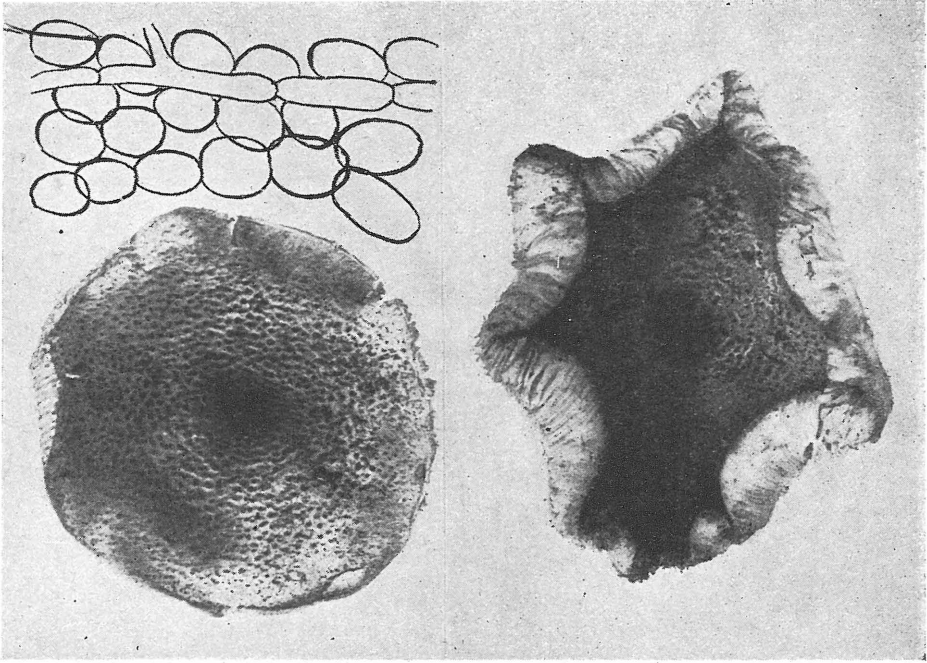
Fig. 4—6.

Carposomata copiosa huius speciei 16. IX. 1954, Pragae, in horto publico „Kinského sady“ dicto Dr. Wichanský legit. Specimina pragensia cum icone et descriptione Langei in Flora Agaricina Dannica 1 : 26, t. 10D, 1935 bene concordant.

Species mediocris. Pileus 4—7 cm diam., e convexo explanatus, maturus margine suberectus et subflexuosus, verrucis conicis, acutis confertis et deterrentibus dense ornatus. Haec verrucae castaneae obscurius coloratae sunt, quam cutis pilei, quae rubrofusca est et in squamas



4. *Lepiota echinacea* Lange.  
Praha-Kinského sady, 16. IX. 1954, leg. Dr. Wichanský. Duo carposomata adulta. Dextra sporae. Foto A. Pilát.



5. *Lepiota echinacea* Lange.

Praha-Kinského sady, 16. IX. 1954, leg. Dr. Wichanský. Superficies pilei duorum carpomatomum adultorum. Sinistra hyphae e verrucis in pilei superficie. Foto A. Pilát.

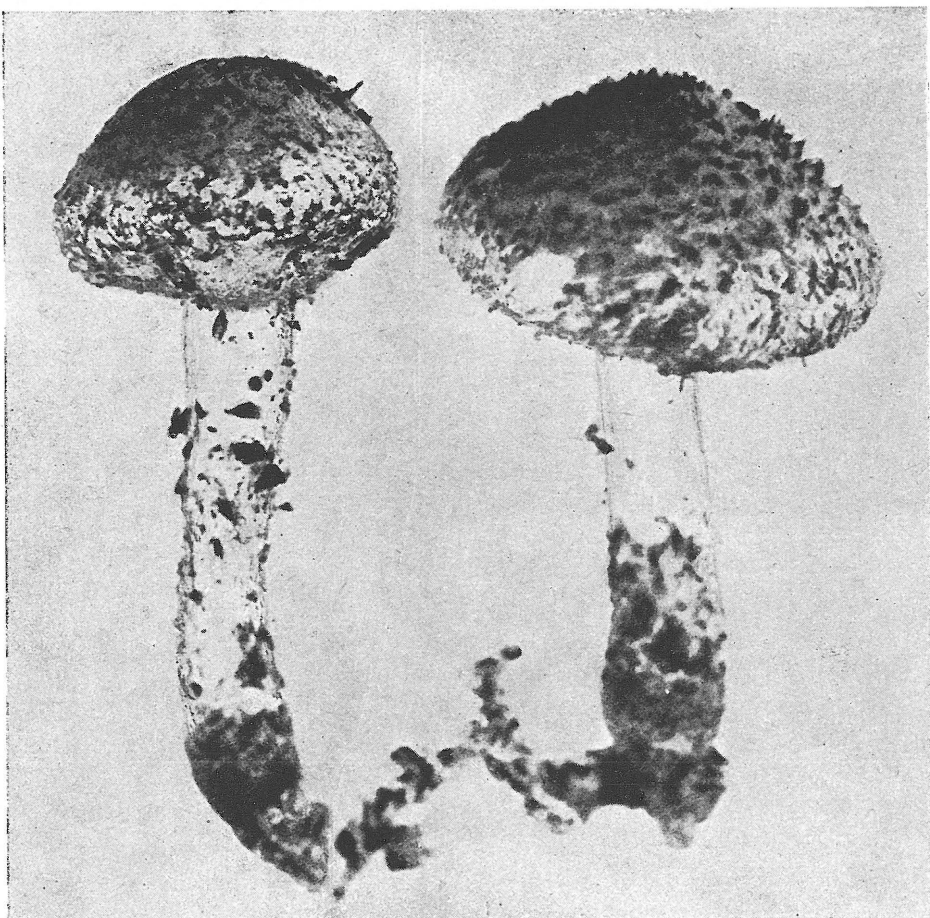
sericeo-fibrillosas, adressas solvitur. Inter quamula fundamentum pallidius rubrofuscum visibile est.

Lamellae confertae, ventricosae, convexae, liberae, aetate paulum undulatae, albae, acie glabrae, haud flocculosae, nam cheilocystidia desunt. Stipes 40—50×5—6 mm, cylindraceus, basi leniter et parum incrassatus, imma basi haud raro funiculis albis mycelialibus provisus, albidus, dein sordide rubrofuscus, fibrillosus, pilei pallidior. Anulus indistinctus, mox evanescens, in fragmenta albida, maxima ex parte in pilei margine adhaerentia, dirruptus. Pars stipitis infraannularis squamis rubrobrunneis, e velo ortis, sparse ornata, maturitate fere esquamosa. Caro pilei et stipitis alba, sapore miti, odore debili saponaceo. Verrucae in pilei superficie e cellulis fuscis, globosis vel globoso-ovoideis, membrana tenui provisis, compositae. In hoc contextu pseudoparenchatico sparsae hyphae normales e cellulis cylindraceis, fuscis compositae, inveniuntur. Aliquantum pallidius coloratae sunt, quam hyphae pseudoparenchymaticae et eiam epicutem pilei component. Sporae hyalinae, ellipsoideae, oblique apiculatae, 5.5—6.5×2.7—3.3  $\mu$ .

*Lepiota Grangei* Eyre f. *brunneo-olivacea* f. n.

Fig. 7—8.

Pileus 20—25 mm diam., e convexo explanatus, plus minusve umbonatus, tenuiter carnosus, fragilis, siccus, squamulis brunneo-olivaceis,



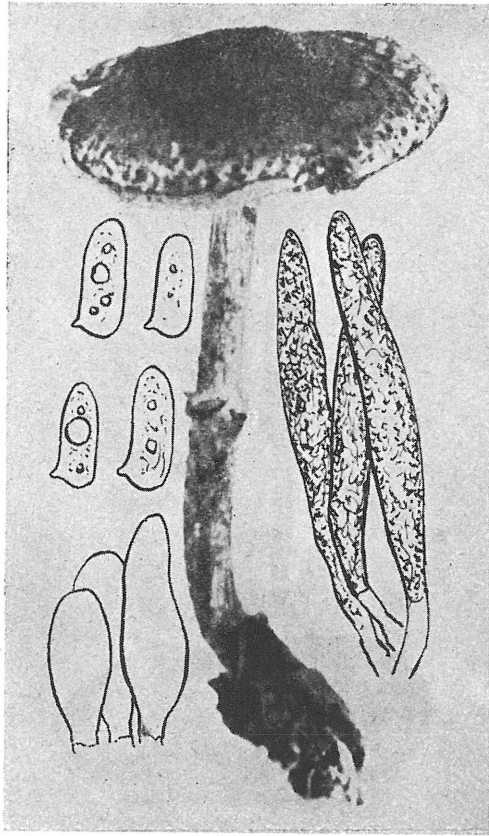
6. *Leptota echinacea* Lange.  
 Praha-Kinského sady, 16. IX. 1954, leg. Dr. Wichanský. Duo carposomata juvenilia.  
 Foto A. Pilát.

obscuris conferte ornatus, cacumine compacte brunneo-olivaceus, marginem versus ad fundamentum albido-lutescentem remotius squamosus, margine ex incurvo expanso.

Lamellae tenues, confertae, ventricosae, parte media ca 3 mm latae, albae tinctu lutescenti, dein sordide lutescentes, liberae, sed a stipite haud remotae, acie concolores et floccosae.

Stipes cylindraceus, basi minime incrassatus, 30—40 × 2—3 mm, a pileo secedens, e farcto cavus, fibroso-carnosus, siccus lanato-fibrillosus, squamulis superficialibus plus minusve fugacibus atro-fuscis vel atro-olivaceis sub anulo variegatus, parte supraanulari albidus. Anulus floccosus, albidus, evanescens.

Caro pilei alba, stipitis grisea, basi haud ignea, odore debili et sapore miti.



7. *Lepiota Grangei* Eyre f. *brunneo-olivacea*  
Pilát.

Praha-Kinského sady, 16. IX. 1954, leg. Dr.  
Wichanský. Carposoma adultum. Sinistra spo-  
rae et cheilocystidia, dextra pili e squamulis  
in pilei superficie. Foto A. Pilát.

Squamulae in pilei superficie e pilis obtusis, unicellularibus, plasma colorata, brunneo-olivacea repletis. Cheilocystidia in acie lamellarum globoso-clavata, hyalina, tenuiter tunicata.

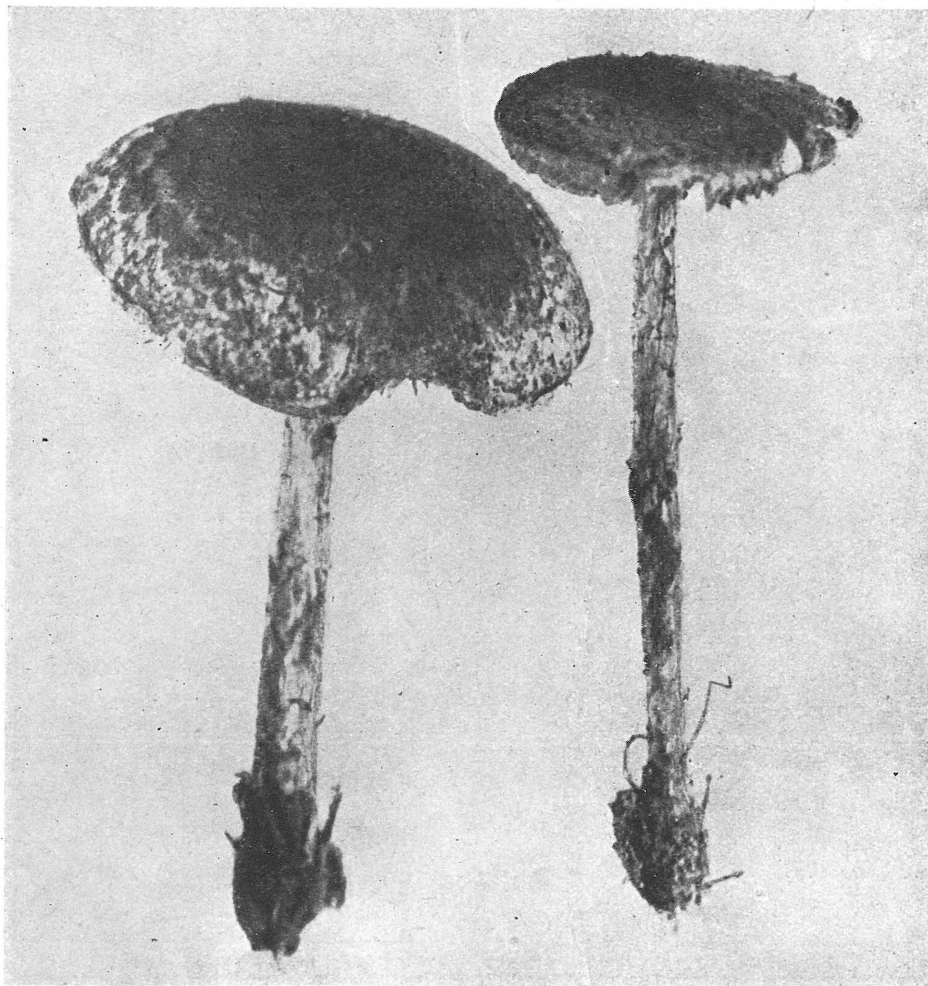
Sporae hyalinae, elongato-ellipsoideae, conspecte calcaratae,  $9-10 \times 3.5-38 \mu$ .

A *Lepiota Grangei* typica differt praesertim colore pilei obscure brunneo-olivaceo.

Hab. Ad terram in horto publico „Kinského sady“ dicto, Praegae, 16. IX. 1954, Dr. Wichanský legit.

Fungus pragensis *Lepiotae griseo-virenti* R. Maire (Bulletin de la Société Mycologique de France, 44 : 37, 1928) e Algeria descriptae affinis





8. *Lepiota Grangei* Eyre f. *brunneo-olivacea* Pilát.  
Praha-Kinského sady, 16. IX. 1954, leg. Dr. Wichanský. Duo carposomata semiadulta.  
Foto A. Pilát.

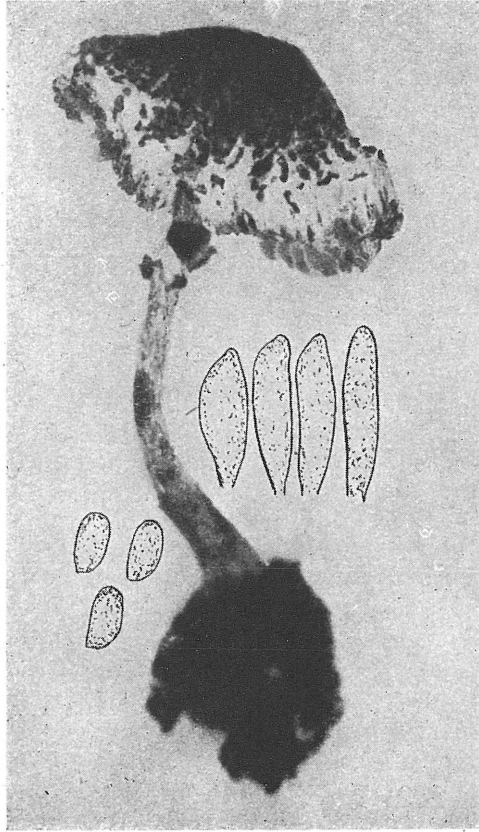
videtur, sed sporis angustioribus et longioribus et carne stipitis parte basali haud ignea discrepat.

Typus in herbario Musei Nationalis Pragae asservatur.

***Lepiota micropholis*** B. et Br., Journ. Linn. Soc. XI : 505. — Saccardo, S. F. 5 : 61, 1887. — Cooke, Ill. Br. F. 943a. — Lange Fl. Ag. Dan. 1 : 34, t. 13D.

Unum specimen, quod Dr. Miloš Deyl Prague XIX, 17. IX. 1954, ad terram in olla cum *Clivia miniata* legit, in fig. 9, p. 13, arte photographica depicta, illustravimus. — Fig. 9.

Pileus 10 mm diam., late conice convexus, obtuse umbonatus, adultus margine paulum undulatus, squamulis densis, praecipue centro erectis, granulosis, sordide obscure fulligineo-fuscis, cacumine fere stratum continuum formantibus, ornatus et marginem versus squa-



9. *Lepiota micropholis* B et Br.

Praha XIX, in domo ad terram in olla cum  
Clivia miniata, 16. IX. 1954. leg. Dr. M. Deyl.

Sinistra sporae, dextra cheilocystidia.

Foto A. Pilát.

mulis remotis, ad fundamentum album sedentibus, instructus. Lamellae albae, liberae.

Stipes 10—15 mm longus et ca 1 mm crassus, cylindraceus, pallide carneus, albide floccosus, anulo distincto, membranaceo, supra albo, infra atrofusco instructus.

Cheilocystidia in acie lamellarum parum conspecta, clavata usque subfusioidea, tenuiter tunicata, plasma granulosa instructa. Basidia te-

traspóra. Sporae ovoideo-ellipsoideae, uno latere applanatae, laeves, hyalinae,  $5.5-6 \times 3-3.3 \mu$ .

Habitu et magnitudine fungus noster cum descriptione originali *Lepiotae micropholis* B. et Br. l. c. bene concordat et idem cum icone Cookei (t. 943a) et icone Langei (1 : 34, t. 13D) optime convenit. Berkeley et Broome *Lepiotam micropholidem* e speciminibus, quae cel. Thwaites in insula Ceylon legit, descripserunt. Posterius in tepidariis varim in Europa hic fungus lectus est et id praecipue in olis cum plantis tropicis (Brittania, Dania).

*Lepiota micropholis* B. et Br. probabiliter species tropica est, quae *Lepiotae lilaceae* Bres., europaeae, proxime affinis est. Differt imprimis dimensionibus minoribus et characteribus oecologicis. Kühner et Romagnesi nostram speciem cum *L. lilacea* Bres. synonymisant.

Loquin in Bulletin de la Société Linnéenne de Lyon, 14 : 52, speciem generis *Lepiota* describit, quae, ut auctor confirmat, probabiliter cum *Lepiota micropholide* sensu Cooke identica sit. Fungus Loquini indumentum pilei hymeniforme habet, huc illuc cum pilis elatis, subcrasse tunicatis et aureoluteis,  $3 \times 56-100 \mu$  magnis, squamulas griseas, griseo-brunneas usque obscure fuligineas (ut in *Lepiota lilacea* sensu Kühner et Romagnesi) et sporas  $5-6 \times 3.5-4 \mu$  habet. Eodem ephemeride p. 62 Loquin *Lepiotam sulcatam* describit, quae habitu, sporis et anulo *Lepiotam lilaceam* et *Lepiotam micropholidem* valde in mentem revocat, sed indumento pilei e hyphis confertis,  $4-7 \mu$  crassis, saepe capitatis, basi fibulosis, e cellulis magnis, lageniformibus vel subclavatis composito et huc illuc pilis elatis, coloratis, crasse tunicatis et conspcte lucem frangentibus intermixtis, discrepat. Sporas habet  $5-5.5 \times 3.5-4 \mu$  magnas.

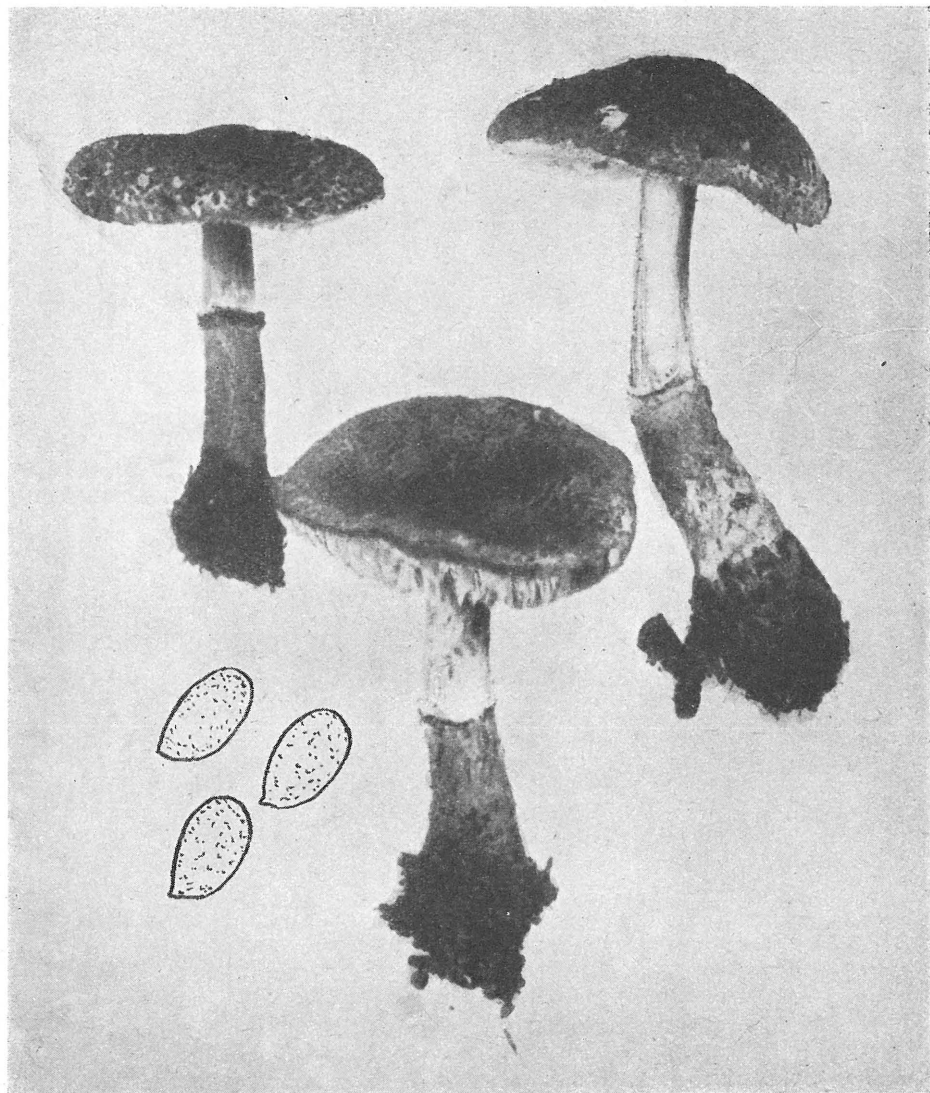
Non dubito, quin fungus Cookei, depictus sub nomine *Lepiotae micropholidis* B. et Br., cum fungo Langei et nostro identicus sit, — et idem probabiliter fungus originalis ceylanicus.

Haec *Lepiota* parvissima probabiliter species tropica est, quae in zona temperata solum in tepidariis occurit. *Lepiota lilacea* Bres. dimensionibus majoribus et occurrentia sub Iove locis graminosis in zona temperata differt.

### ***Lepiota pseudo-helveola* Kühner.**

Fig. 10.

Species mediocris. Pileus 2—5 cm diam., e convexo explanatus, umbone lato ornatus, cacumine fuscus et continue hirsuto-velutinus, ad marginem ad fundamentum album vel albidum in floccas squamiformes vel frustulas irregulares, saepe confluentes, solutus. Lamellae albae. Stipes 30—55 mm longus et 3—5 mm crassus, subcylindraceus, deorsum leniter incrassatus, apice cremeus vel cremeo-fuscidulus, deorsum sordide rosaceo-fuscus, basi saepe albo-gossypinus, apice sericeus, ceterum glabratus vel subarachnoideus, anulo etiam in statu adulto distincto, saepe ochreiformi, tinctu rosaceo et floccis sordide



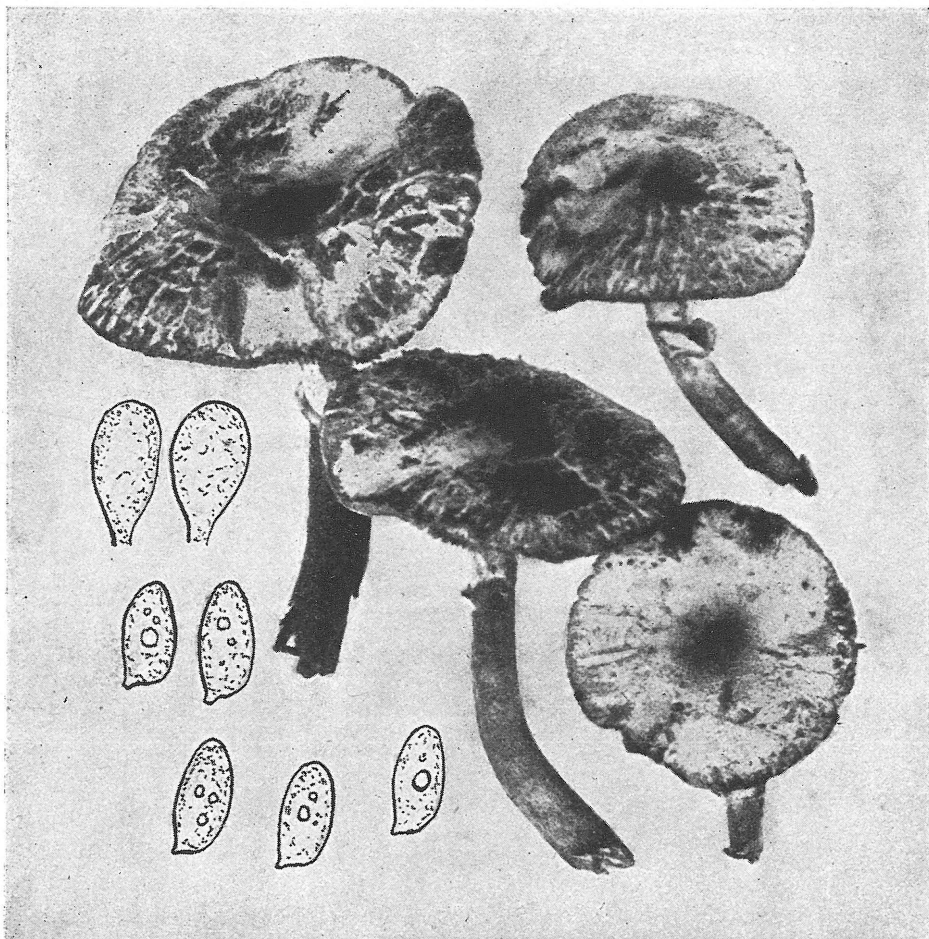
10. *Lepiota pseudo-helveola* Kühn er.

Praha-Kinského sady, 9. X. 1954, leg. Dr. Wichanský. Tria carposomata adulta et sporae.  
Foto A. Pilát.

fuscis vel griseo-fuscis, subtilibus ornatus. Caro alba vel tinctu rosaceo, odore debili, subamoeno.

Sporae ovoideo-ellipsoideae, hyalinae, parum distincte apiculatae, 9—10 X 5—5.5  $\mu$ .

Hab. ad terram humosam in horto publico „Kinského sady“ dicto, Pragae, sub arboribus frondosis, 9. X. 1954, Dr. Wichanský legit.



11. *Lepiota rufovelutina* Vel. var. *sanguinescens* Pilát.

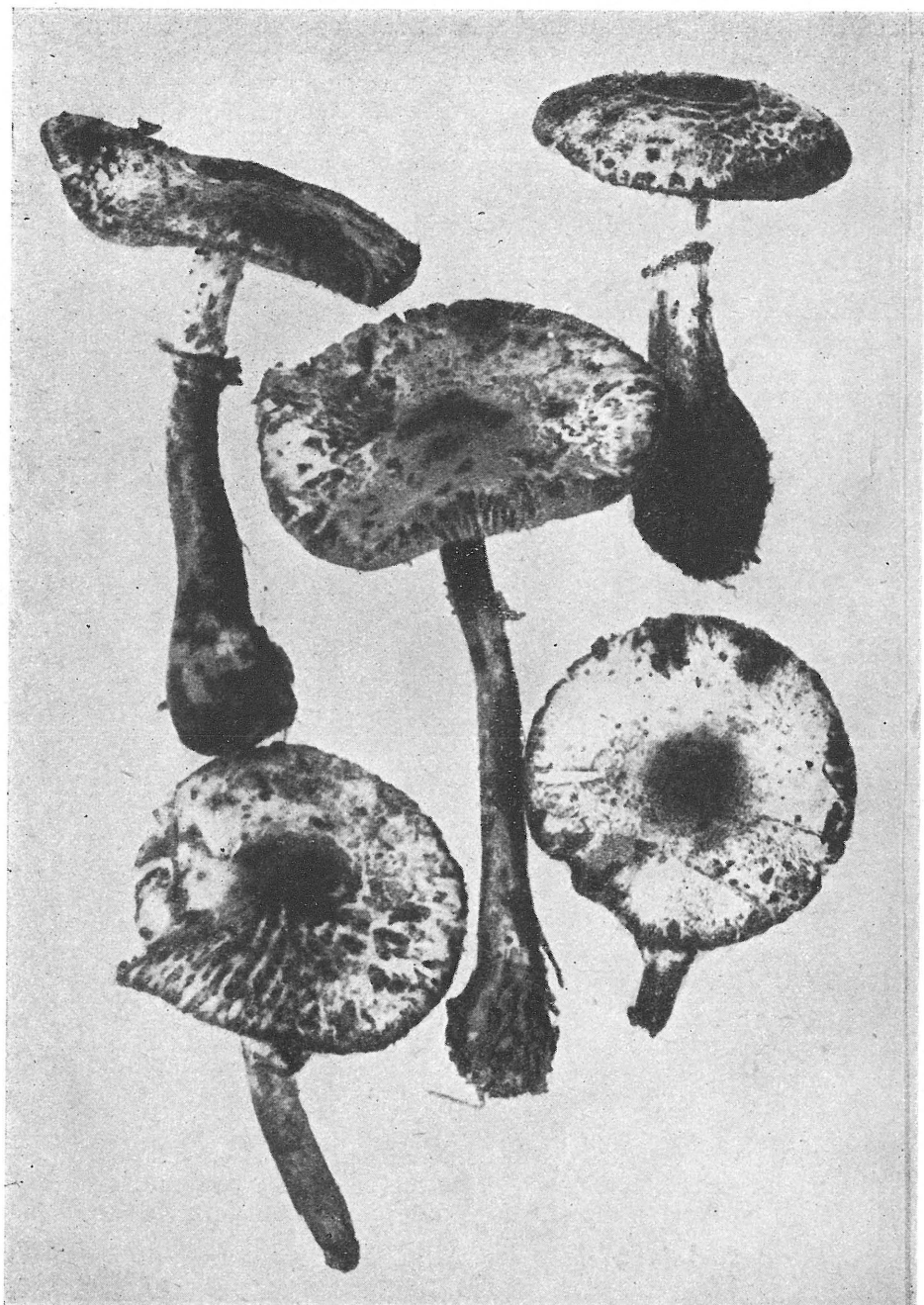
Ad terram in Pineti margine sub fruticetis frondosis prope Solopisky haud procul Pragae, Bohemiae, 10, X. 1954, leg. Dr. Wichanský. Cheilocystidia et sporae. Foto A. Pilát.

***Lepiota rufovelutina* Velenovský var. *sanguinecens* n. var. Fig. 11—12.**

Habitu et magnitudine *Lepiotae rufovelutinae* Vel. similis. Pileus 45—55 mm diam., superficie velutino-setulosus, sed in squamas magnas, areolatas solutus. Omnis fungus vivus albus, cacumine excepto, ubi colore sordide brunneo vel fulgineo notatus est. Tritus vel aetate spontanee pileus sordide brunnescit, qua de causa squamae magnae in fungo adulto colore pallide sordide fulgineo insignes sunt et ad fundamentum album sedent.

Lamellae albae, tactu rubescentes et acie brunnescentes. Cheilocystidia in acie lamellarum sparsa, crasse clavata, saepe fuscidula, nam

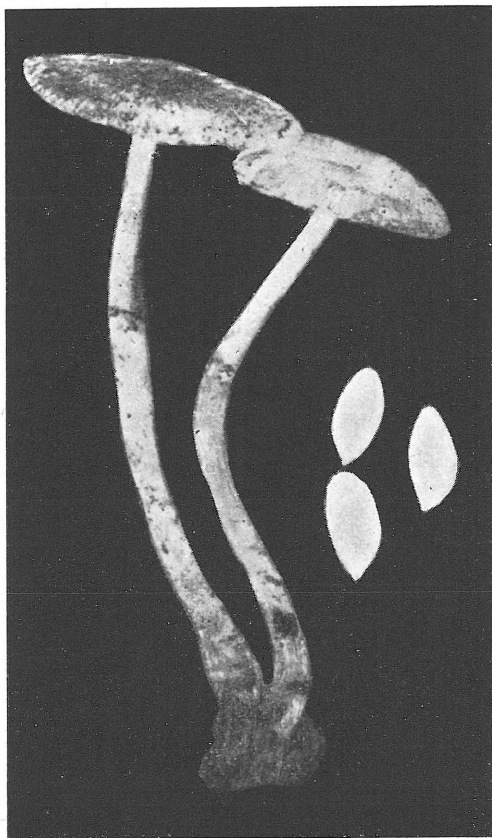




12. *Lepiota rufovelutina* Vel. var. *sanguinescens* Pilát.  
Ad terram in Pineti margine sub fruticetis frondosis prope Solopisky haud procul Pragae,  
Bohemiae, 10. X. 1954, leg. Dr. Wichanský. Quinque carposomata adulta. Foto A. Pilát.

succus fungi ea modo sat intensivo tinctu fuscidulo vel brunneo colorat, — similiter ut etiam membranas sporarum.

Stipes cylindraceus, basim versus ut in *Lepiota rufovelutina* typica clavato-incrassatus. Pars stipitis supraanularis arachnoideo-sericeo-



13. *Lepiota sericata* Kühner et Romagnesi.

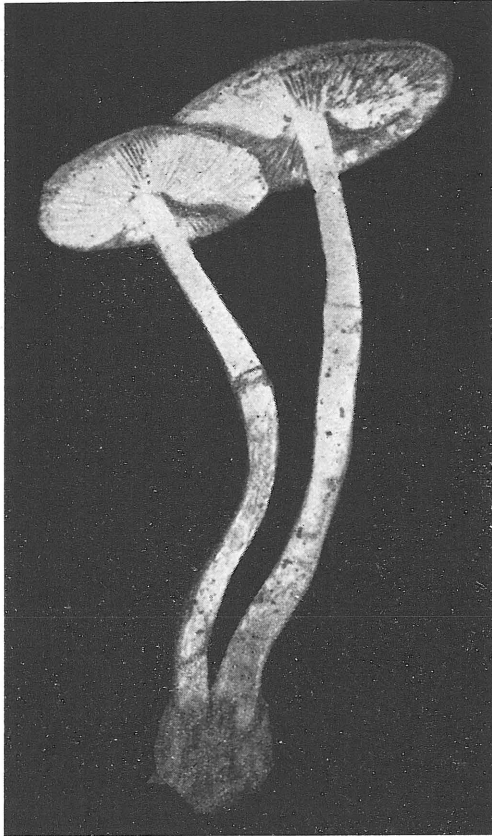
Praha-Kinského sady, 6. X. 1954, leg.  
Dr. Wichanský. Dextra sporae. Foto A. Pilát.

fibrillosa, infraanularis floccoso-squamulosa. Superficies stipitis primum alba est, trita sanguinescit et serius brunnescit. Sporae fere ut in typo, solum ad apicem magis angustatae et aliquantum majores,  $7.5-8 \times 3.6-4.5 \mu$  magnae (in *Lepiota rufovelutina* typica sporas  $7.3-7.8 \times 3.6-4 \mu$  observavi).

Hab. ad terram in Pineti margine sub fruticetis frondosis prope Solopisky, haud procul Pragam, 10. X. 1954, Dr. Wichanský legit. Fungus noster a *Lepiota rufovelutina* typica imprimis coloratione carnis in aëre celerius sanguinea, lamellis aetate acie fuscidulis vel rubrofuscis et

squamositate pilei areolata discrepat. *Lepiota rufovelutina* typica magis radialiter solvitur, qua de causa raro squamae areolate oriuntur.

Typus in herbario Musei Nationalis Pragae asservatur.



14. *Lepiota sericata* Kühner et Romagnesi.  
Praha-Kinského sady, 6. X. 1954, leg.  
Dr. Wichanský. Foto A. Pilát.

***Lepiota sericata*** Kühner et Romagnesi, *Flora anal.* p. 405, 1953. Synonymia: *Lepiota cristata* A. et S. var. *sericea* Cool, *Medd. Nederl. Myc. Ver.* 12, 1922. — *Lepiota sericea* (Cool) Huysman, *Medd. Nederl. Myc. Ver.* 28 : 44, 1943. — *Lepiota serena* sensu Lange, *Flora Agar. Danica* 1 : 29, t. 11B, 1935.

Fig. 13—14.

Pileus 20—35 mm diam., e glanduliformi mox plane expansus, umbone plano humilique notatus, lacteo-albus, centro (umbone) statu adulto fuscidulus, glaber et sericeus, margine adultus rimosus, tenuis-



sime carnosus, solum sericeus, vix adpresse fibrilloso-floccosus, haud squamulosus.

Lamellae confertae, liberae, albae, dein subcremeae, humiles, parum ventricosae, ad stipitem acie sub lente minime pilosulae. Stipes longus, tenuis, elatus, 50—70 × 2—4 mm magnus, cylindraceus, basim versus minime incrassatus, intus fistuloso-cavus, albus, glaber et laevis, anulo membranaceo, angusto, subinfundibuliformi, dein flaccido et stipite agglutinato, sed plerumque distincto, rarius statu adulto evanescenti, ornatus.

Caro alba, sapore et odore inconspicuis.

Basidia tetraspora, 20—23 × 6—7.5  $\mu$  magna. Cheilocystidia in acie lamellarum copiosa, fusoido-lageniformia, sursum plerumque modo diverso angustata, 45—65  $\mu$  longa, parte latissima 7—15  $\mu$  crassa, tenuiter tunicata et hyalina. Hyphae cutis pilei 13—18  $\mu$  crassae, tenuiter tunicatae, hyalinae.

Sporae ellipsoideae, apicem versus magis angustatae, apiculo parum excentrico instructae, laeves, hyalinae, 9—10 × 4.5—5  $\mu$ .

Hab. in fruticetis in horto publico „Kinského sady“ dicto, Praegae, 6. X. 1954, Dr. Wichanský legit.

Quinque exemplaria adulta vidi! Fungus pragensis optime cum icone Langei (Fl. Agar. Dan. 11B, 1935) nomine *Lepiotae serena* designato concordat et idem cum descriptione cel. Huysman (1943 l. c.) sub nomine *Lepiotae sericeae* Coll., e Hollandia, convenit. Auctor ultime commemoratus solum cheilocystidia paulisper crassiora describit (40—80 × 12—20  $\mu$ ).

*Lepiota serena* Fr. sensu Huysman (1943) et Kühner (Bull. Soc. Myc. de France 52 : 213, 1936) species simillima est, quae solum stipite basim versus magis incrassato et cheilocystidiis clavatis, apice latissimis obtusisque (13—16  $\mu$ ), anulo distinctiori et magis infundibuliformi discrepat.

Fungus noster pragensis adhuc in Čechoslovakia non observatus est et prius solum e Dania et Hollandia notatus est.

### **Agaricus maiusculus n. sp.**

Fig. 15—16.

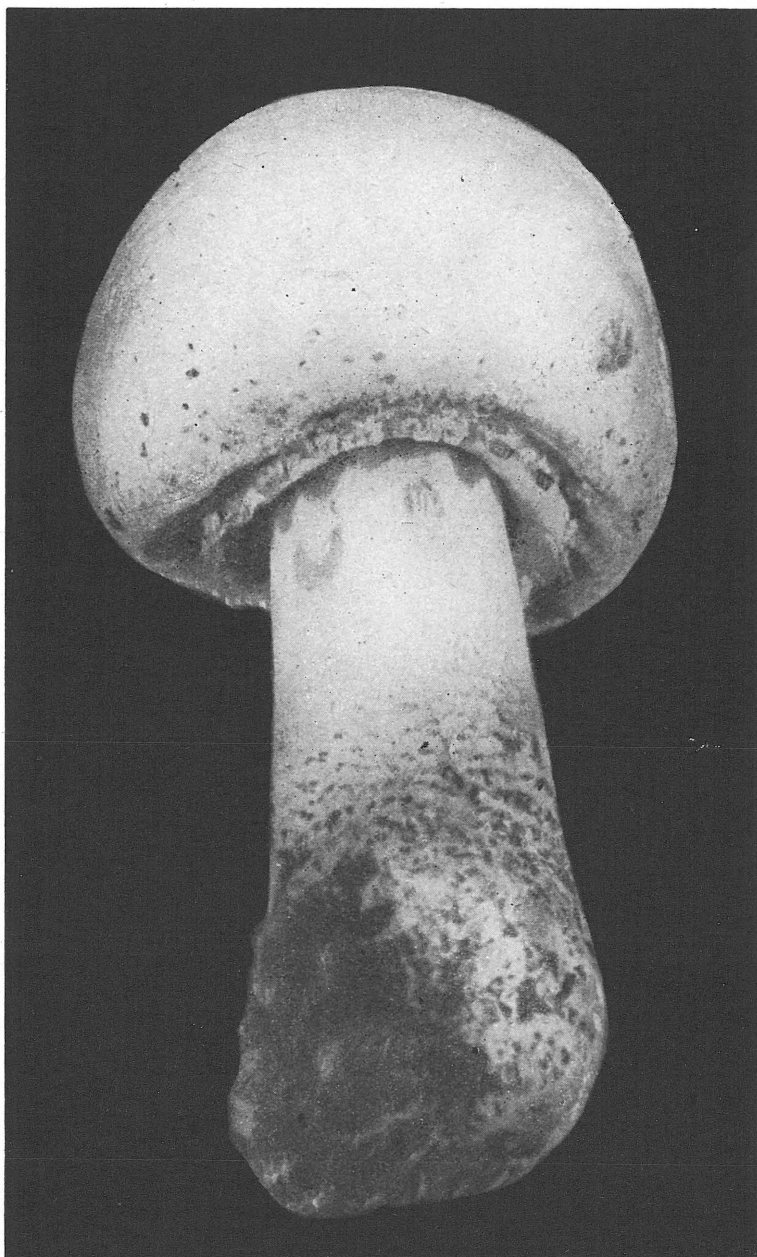
Species e proxima affinitate *Agarici Beneši* Pilát, a quo imprimis sporis majoribus, 6—7.5 × 4—4.5  $\mu$  magnis, dignoscitur. *Agaricus Beneši* Pilát habet sporas solum 5—5.5 × 3.5—4.5  $\mu$  magnas. Caro aëre rubescit, sed minus quam in *Agarico Beneši* Pilát.

Fungus candidus, pileo adpresse subtiliter squamuloso, primum subgloboso, dein hemisphaerico vel hemisphaerico-campanulato.

Stipes cylindraceus, basi minime incrassatus, iuvenilis candidus, deorsum subtiliter adpresse squamulosus, anulo magno, bistratoso, instructus, tritus superficiei sordide salmoneo-rubescens.

Lamellae iuveniles roseae.

Caro pilei secta leniter rubescens, stipitis in dimidio inferiori e pallide rosaceo-aurantiaco in sordide salmoneum coloratur. Odor



15. *Agaricus maiusculus* Pilát.  
Karlštejn prope Pragam, Bohemiae, 12. X. 1954, leg. A. Pilát.



16. *Agaricus maiusculus* Pilát.  
Karlštejn prope Pragam, Bohemiae, 12. X. 1954, leg. A. Pilát.

haud aniseus, parum conspectus, debilis, fungineus, potius paulum inamoenus.

Basidia tetraspora. Sporae ovoideae, uni-vel pluriguttulatae, apiculo excentrico provisae,  $6-7.5 \times 4-4.5 \mu$  magnae. Cheilocystidia in acie lamellarum parum conspecta, late clavata, subpyriformia,  $7-13 \mu$  crassa. Hab. in silva mixta solo calcareo ad Královská studánka haud procul Karlštejn, Bohemiae centralis, 12. X. 1954, unum carposoma iuvenile, adhuc clausum, legi et vivum arte photographica depinxi (cf. fig. ). Ad hanc speciem etiam carposomata, quae sub nomine *Agarici Beneši* Pilát in tractatu meo „The Bohemian Species of the Genus *Agaricus*“ (Acta Musei Nationalis Pragae VIIB, No. 1, p. 58, 1951 descripsi et in figura photographica No. 24 illustravi, pertinent. Specimina commemorata eodem loco 1. X. 1950 lecta sunt).

Typus in herbario Musei Nationalis Pragae asservatur.

**Agaricus Maškae** Pilát in *Česká Mykologie* 8 : 159—165, 1954.

Specimina nova huius speciei e proxima affinitate *Agarici macrospori* M. et S. a cel. Dr. J. Maška e localitate classica obtinui. Haec species praecipue sporis minoribus ab *Agarico macrosporo* M. et S. discrepat. In eodem loco graminoso solo calcareo devonico extra silvam inter Petrovice et Sloup Moraviae specimina nova huius speciei 1. Octobris 1954 lecta sunt. Sporas in cumulo et unum exemplar exsiccatum modo microscopico examinavi. Maxima pars sporarum cum dimensionibus in diagnose originali concordat ( $7.2-7.8 \times 3.8-4.3 \mu$ ). Sed etiam nonnullas sporas majores observavi, nam dimensiones sporarum sat variant:  $7.4-9 \times 5.4-6 \mu$ . Sed etiam haec spora maximae quam spora *Agarici macrospori* M. et S. distincte minores sunt.

**Clavaria rosea** Fr. var. *subglobosa* Corner.

Fig. 17.

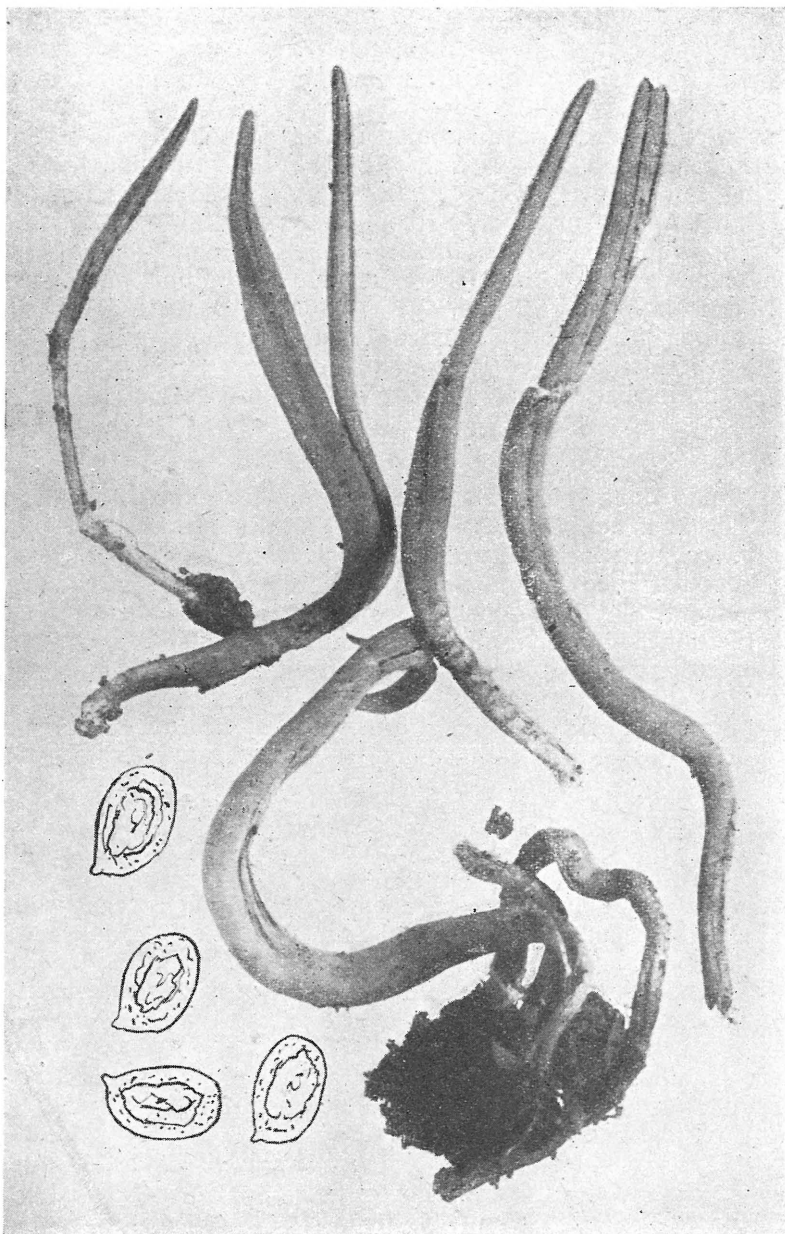
Carpomata solitaria vel subcaespitosa, pallide rosaceo-salmonea, simplicia, cylindracea, apice subangustata, dein saepe cylindraceo-subfusoida, saepe curvata, 50—70 mm longa et 3—5 mm lata, laevia, parte basali indistincte stipitiformia, pallidius colorata, sed haud hirsuta, fragillima, plerumque tota longitudine compressa et rimo longitudinali provisiva.

Caro fragilis, concolor, sapore odoreque haud conspectis.

Basidia tetraspora, ca  $45 \times 6-8 \mu$  magna. Hyphae tramae tenuiter tunicatae, haud fibulatae,  $9-14 \mu$  crassae.

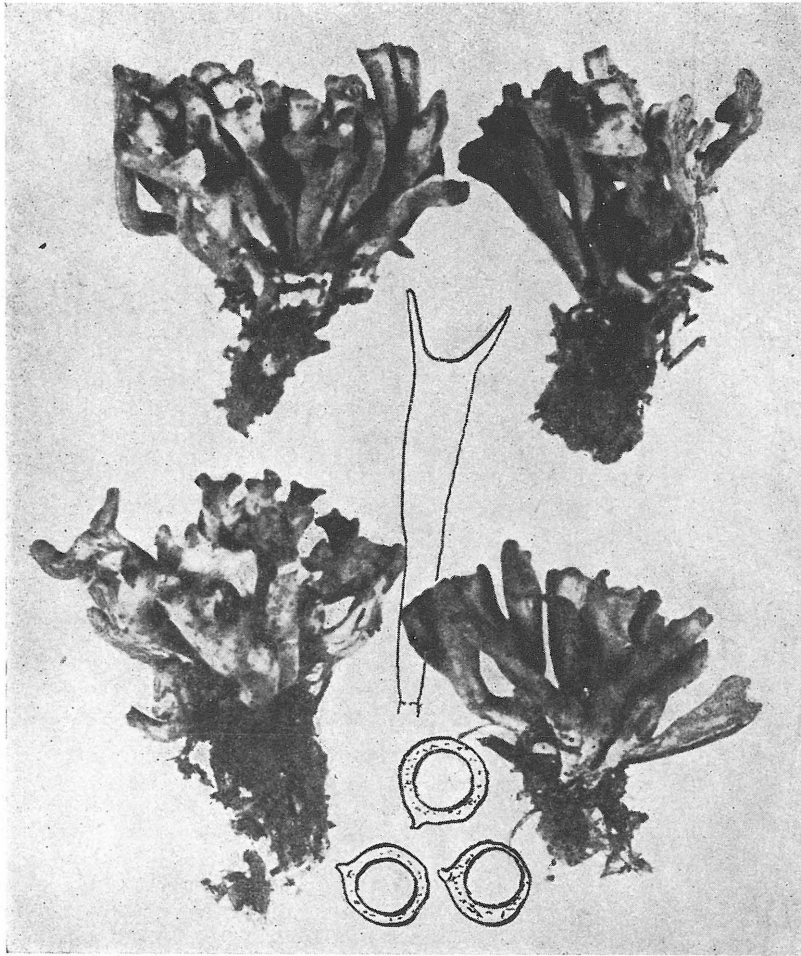
Sporae globoso-ovoideae, apiculatae, hyalinae, laeves,  $7-8 \times 5.5 \mu$ . Hab. ad terram in gramine in horto publico „Kinského sady“ dicto, Pragae, 12. IX. 1954, Dr. Wichanský legit.

Typus huius speciei rarae teste Corner sporas  $5-8 \times 2.5-3.5 \mu$  magnas habet et adhuc in Suecia, Britannia, America boreali (New York, Colorado) lectus est. Varietas *subglobosa* Corner, quae cum *Clavaria rosea* sensu Bresadola, Rea et Ricken identica est, sporas habet globoso-ovoideas vel late ellipsoideas et e Gallia, Britannia et Germania adhuc indicatur.



17. *Clavaria rosea* Fr. var. *subglobosa* Corner.  
Praha-Kinského sady, 12. IX. 1954, leg. Dr. Wichanský. Foto A. Pilát.





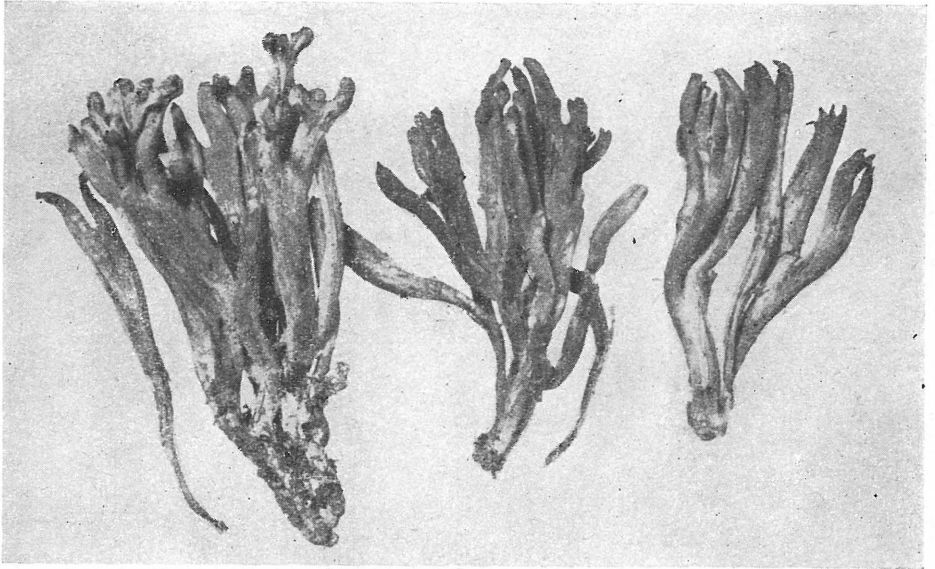
18. *Clavulinopsis corniculata* (Fr.) Corner f. *bispora* Corner.

Ad terram loco graminoso in horto publico Kinského sady dicto Pragae 28. XI. 1954, Dr. Wichanský legit. Quatuor specimina, basidium et sporae. Photo et del. A. Pilát.

*Clavulinopsis corniculata* (Fr.) Corner f. *bispora* Corner in litt. Cel. Dr. Wichanský 28. XII. 1954 quatuor caespites fungi, in icone arte photographica depicto illustratum, loco graminoso ad terram in horto publico, Kinského sady dicto, Pragae, legit.

Fig. 18—20.

Carposomata sat dense caespitosa et subfirma, basi coniuncta vel concreta 15—25 mm alta, subrecta vel marginalia lunulato-flexuosa, aureolutea vel vitellina, solida, ad apicem clavata et ibi 2—4 mm crassa, apice plerumque in ramos abortivos et obtusos modo subdichotomico



19. *Clavulinopsis corniculata* (Fr.) Corner.

In prato in gramine ad silvae marginem prope Roblín, Bohemiae centralis, 12. XI. 1950, Ivan Charvát legit. Photo A. Pilát.

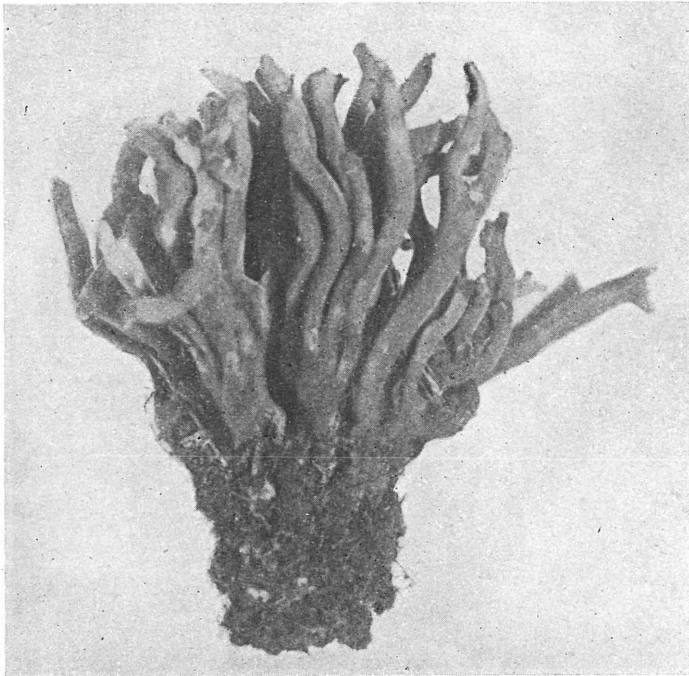
divisa et ibi dilatata, haud raro apice subtruncata, deorsum angustata in stipitem basalem parvam et ibi saepe albo-tomentosa, exsiccata apice paulisper rugosa.

Basidia bispora, ca  $27 \times 7.5 \mu$ , rarius tri-vel tetraspora. Sporae globosae, laeves, distincte apiculatae, plasma saepe pallide lutescenti et gutta oleosa magna, hyalina instructae,  $6.5-8 \mu$  diam. metientes.

Hunc fungum ut *Clavulinopsis fusiformis* (Fr.) Corner var *ceranoides* W. G. Sm. determinavi, sed haud certus fui hanc determinationem aptam esse. Qua de causa iconem photographicum et specimina exsiccata cel. Corner, in Cambridge misi, qui mihi 3. I. 1951 de hoc fungo in epistula scripsit: "At first I was inclined to agree with your identification, but macroscopically I would have identified it as a form of *Clavulinopsis corniculata* (Fr.). Most of the basidia are 2-spored, as you say, and this would accord for the larger spores ( $6-8 \mu$ ) as in *C. fusiformis*. I saw a few 3-spored and one or two 4-spored basidia.

If *Clavulinopsis fusiformis* and *C. corniculata* could hybridize, this would be the result. On the whole I include to identify it as *Clavulinopsis corniculata* (Fr.), 2-spored, because of the thinner fruitbodies with a tendency to repeat dichotomy."

Formam typicam tetrasporicam huius speciei cum sporis minoribus, globosis,  $5-6 \mu$  diam., plasma lutescenti et una gutta oleosa magna et hyalina instructis, odore distincte farinoso, loco arido, graminoso prope Bohnice, Pragae, 15. XI. 1944 B. Vytouš legit. Specimen hoc in figura 24 arte photographica depictum est.



20. *Clavulinopsis corniculata* (Fr.) Corner.

Loco arido graminosoque ad terram prope Bohnice, Pragae,  
15. XI. 1944, B. Vytouš legit. Photo A. Pilát.

Specimina similia idem Ivan Charvát 12. XI. 1950 in prato ad silvae marginem prope Roblín, Bohemiae centralis legit. Cf. figuram 22.

**Cyphella stepposa** Pilát in Actis Musei Nationalis Pragae, IXB, No. 2, p. 84—85, fig. 85—86. 1953.

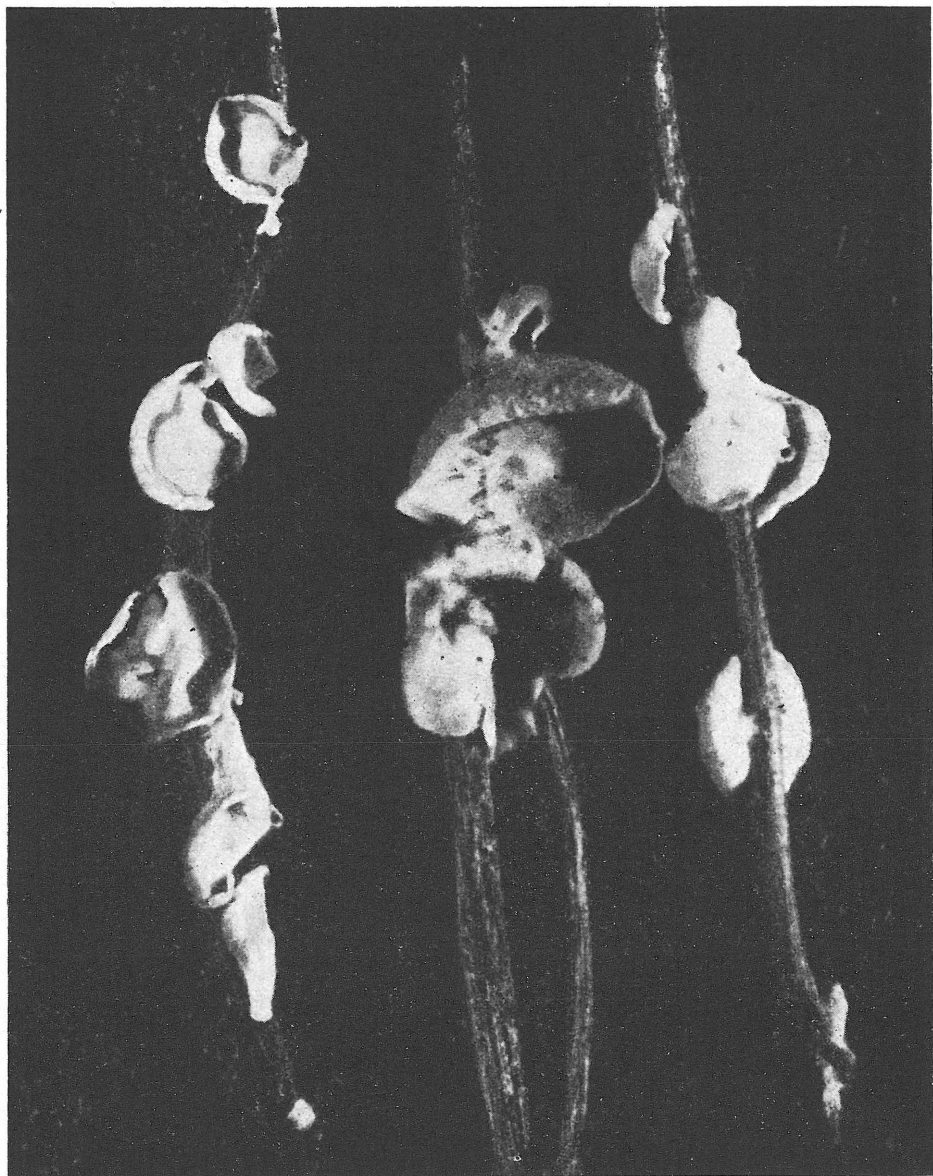
Fig. 21—24.

Haec species admirabilis locis stepposis ad residua plantarum dycotyledonearum et etiam monocotyledonearum (ex. gr. *Stipae capillatae*) in vicinitate urbis Pragae in collibus calcareis devonicis haud rara est. Specimina pulchra et copiosa in valle St. Prokopii prope Řeporyje, haud procul Pragam, 12. XII. et 16. XII. 1953, locis duobus cel. Fr. Kotlaba et. Z. Pouzar legerunt. Cf. fig. 18—21.

Haec species forma carposomatum coloreque et praesertim occurrentia serotina mensibus Novembre et Decembre species nonnullas parvas generis *Leptoglossum* Karst. in mentem revocat.

Carposomata viva sat hygrophana sunt, qua de causa color eorum exsiccatione sat variat. Hymenium madidum conspecte griseum est, dein exsiccando decoloratur et mox colore albido vel cremeo insigne

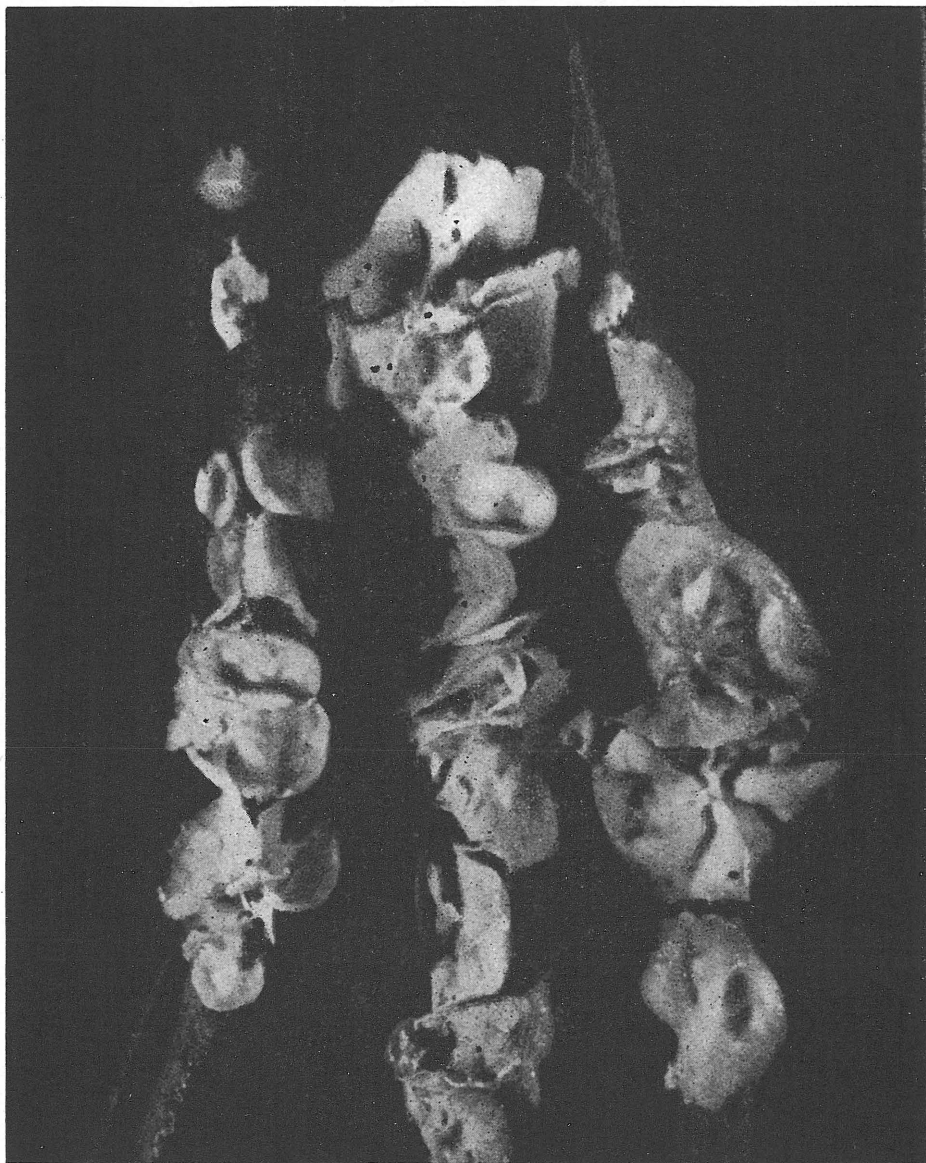




21. *Cyphella stepposa* Pilát.

Prokopské údolí prope Pragam, ad folia emortua *Stipae capillatae*, 16. XII. 1954,  
leg. Dr. F. Kotlaba. Foto A. Pilát.

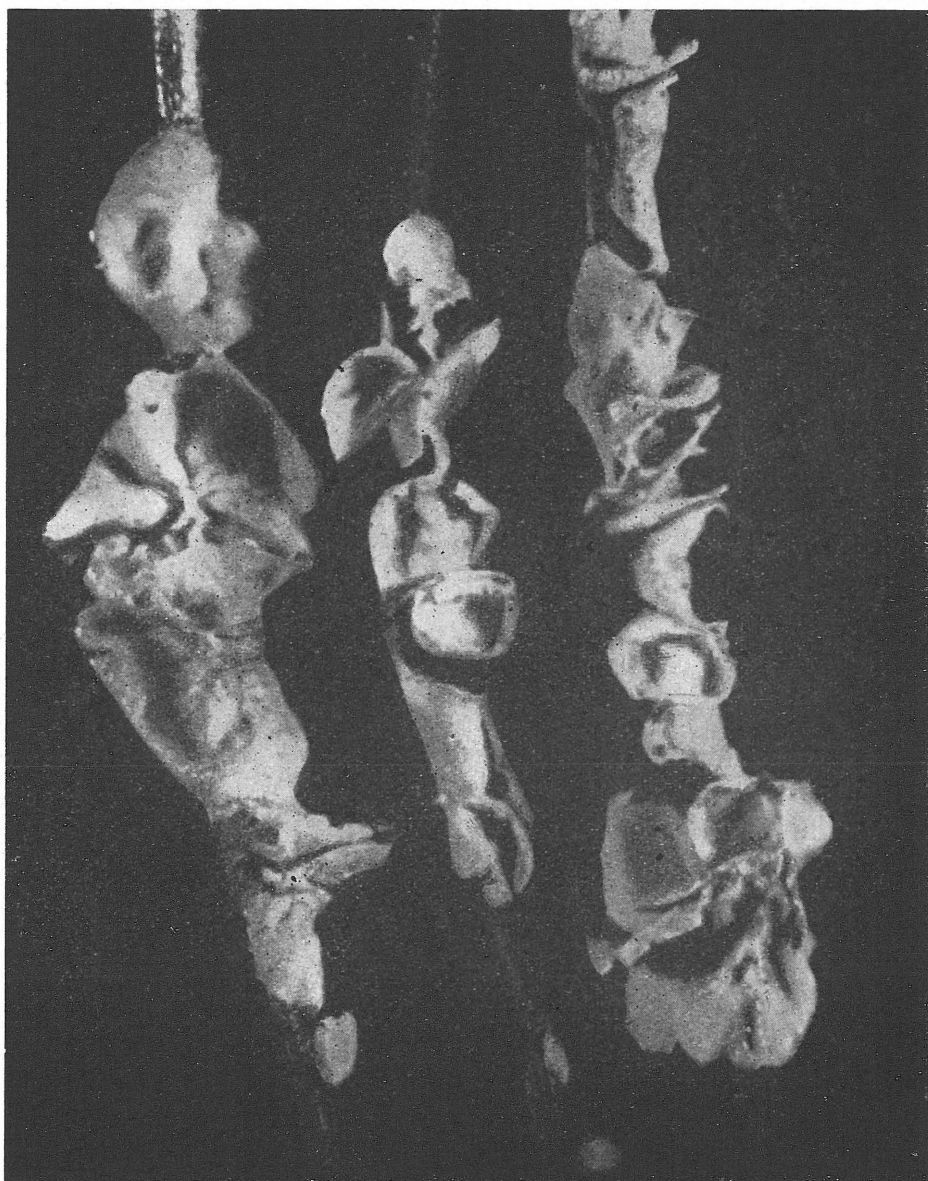
est. Specimina viva et madida primum fere semiglobosa et ambitu rotundata inveniuntur, adulta tamen patellariter explanata et praecipue in positione verticali evoluta sat assymetrica, cuculata vel subeffuso-



22. *Cyphella stepposa* Pilát.

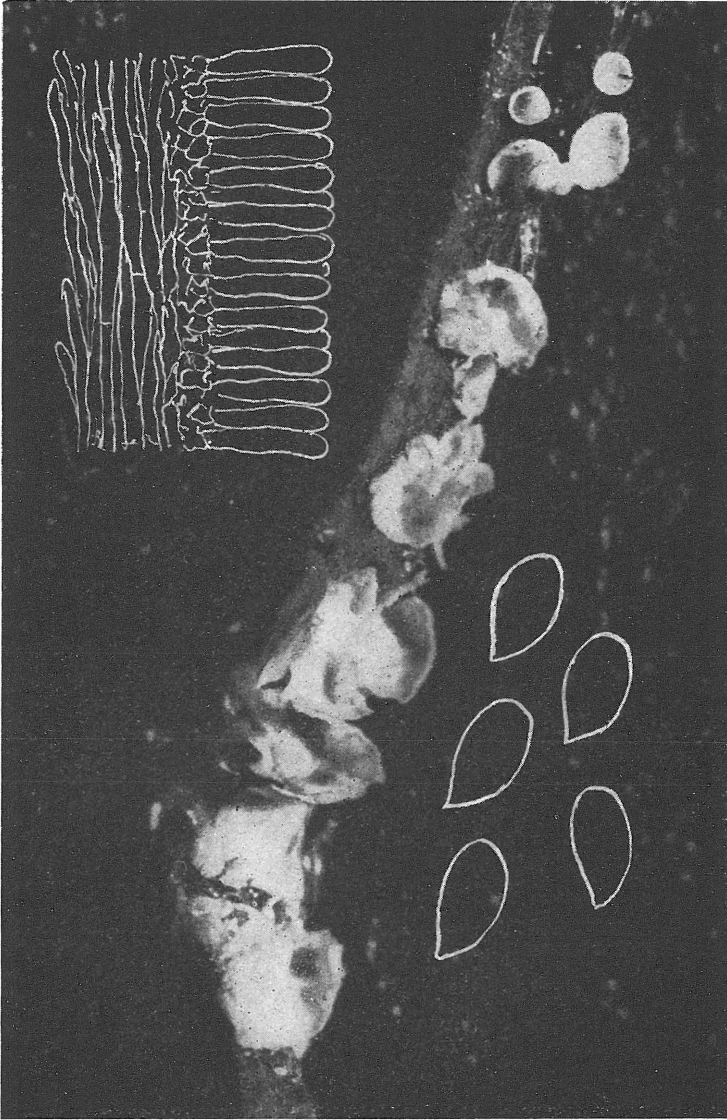
Prokopské údolí prope Pragam, ad folia emortua *Stipae capillatae*, 16. XII. 1954,  
leg. Dr. F. Kotlaba. Foto A. Pilát.

reflexa vel irregulariter lobata sunt. Hymenium in speciminibus adultis vix planum est, saepius irregulariter flexuosum vel rugosum. Paries carposomatis tenuissimus est, tenuiter membranaceus, coniunctim cum hymenio ca 40—60  $\mu$  crassus. Margo cupulae exsiccando mox defor-



23. *Cyphella stepposa* Pilát.  
Prokopské údolí propé Pragam, ad folia emortua Stipae capillatae, 16. XII. 1954,  
leg. Dr. F. Kotlaba. Foto A. Pilát.

matur, involvitur etc., qua de causa specimina semisicca a madidis forma et colore sat discrepant. Latus cupulae externus glaber est vel subglaber, haud lucidus, adpresse brevissime sericeo-tomentosus, sed haud pilosus. Specimina iuvenilia vix 1 mm lata sunt, adulta tamen haud raro



24. *Cyphella stepposa* Pilát.

Prokopské údolí prope Pragam, ad folia emortua Potentillae sp.,  
16. XII. 1954, leg. Dr. F. Kotlaba. Foto A. Pilát. Sinistra paries cupulae  
sectus, dextra sporae.

usque 2 mm diam. metiuntur. Hyphae tenuiter tunicatae, haud copiosae,  
4—6  $\mu$  crassae, rarius plus quam 10  $\mu$ . Basidia breviter clavata, 18—22  $\times$   
7—9  $\mu$ . Sporae hyalinae, ellipsoideae vel ovoideo-ellipsoideae, basi api-  
culo conspecto et magno, paulum excentrico provisae, 7.5—9  $\times$  4—5  $\mu$   
magnae.



SBORNÍK NÁRODNÍHO MUSEA V PRAZE - ACTA MUSEI NATIONALIS PRAGAE

XI. (1955) - B (PŘÍRODOVĚDNÝ) No. 2. - BOTANICA No. 1.

REDAKTOR IVAN KLÁŠTERSKÝ

Albert Pilát:

HYMENOMYCETES NOVI VEL MINUS COGNITI ČECHOSLOVAKIAE III.

V květnu 1955 vydalo svým nákladem v počtu 1100 výtisků Národní museum v Praze  
Vytiskl Knihkisk, n. p., základní záv. 01 v Praze - Cena brožovaného výtisku 11,80 Kčs

A-18734