



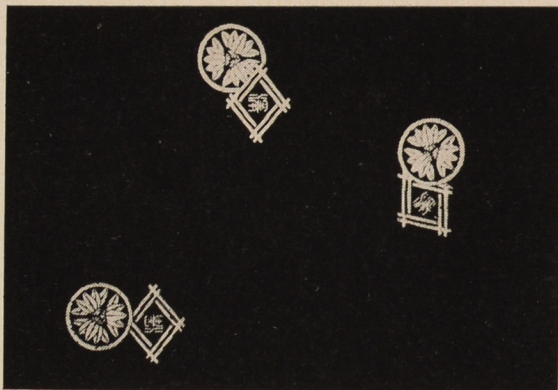
JAPANESE STENCILS IN THE NÁPRSTEK MUSEUM COLLECTION

LIBUŠE BOHÁČKOVÁ

Part IV. *Chūgata* Patterns of *jizomari* Type (II)*

7. Designs Containing Family Crests and/or Ideograms

- 578 Type: *jizomari*
sasa (*Bambusa nipponica*) *mon* and
 double lozenge encircling
 the character "taku" (abundance)
 Technique: *tsukibori*; *itoire*
 42,8 × 53 cm (28,7 cm)**
 Inv. No. A 10.764

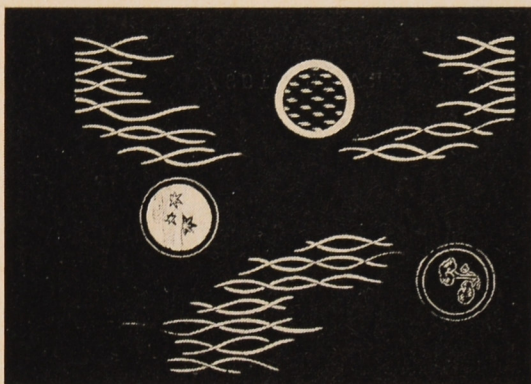


- 579 Type: *jizomari*
 Various family crests (*mon*)
 Technique: *tsukibori*; *itoire*
 24,7 × 41,1 cm (13,8 cm)
 Inv. No. A 10.220



* For the introductory essay, bibliography and the first part of the catalogue (*komon* patterns) see Annals of the Náprstek Museum XI/1983, pp. 9–75, for the second part (*jishiro* type) and index of Japanese terms see Annals of the Náprstek Museum XII/1984, pp. 9–69 and for the third part Annals of the Náprstek Museum XIII/1985, pp. 9–79.

** The bracketed numbers indicate *okuri*, the width of the perforated part of the stencil.



580 Type: *jizomari*

Fragments of wickerwork, circular medallions with *reishi* mushrooms, maple leaves in waves and a simple *kasuri* motif

Technique: *tsukibori*; *itoire*
39,8 X 52 cm [30 cm]

Inv. No. A 10.714



581a Type: *jizomari*

Old fans with *matsukawabishi* encircling ivy leaf and *kumiawase masu* encircling *futatsutomoe*, wooing sparrow and triple rice measure (*mitsuire masu*), *genjiko* symbol, cube with *genjiko*, a chrysanthemum *mon* and fan with oak leaves

Technique: *tsukibori*; *itoire*
42 X 54,7 cm [34,3 cm]

Inv. No. A 10.662

581b The same design as No. 581a

42 X 54,7 cm [34,3 cm]

Inv. No. A 10.752



582 Type: *jizomari*

Various crests [*futatsutomoe*, *mitsuire masu*, character "two", cranes], cube with the character "good" or "lucky", mandarin orange, peony, maple leaves and balance weight (*jundō*)

Technique: *tsukibori*; *itoire*
25,4 X 41,1 cm [14,6 cm]

Inv. No. A 10.160



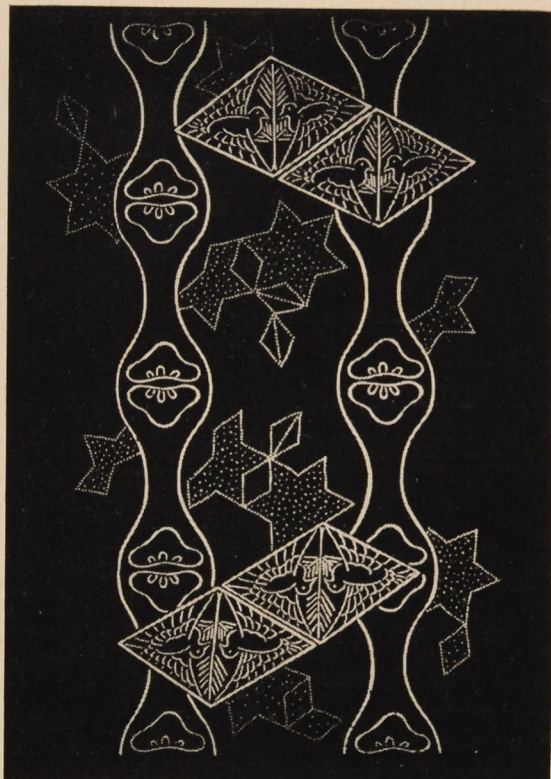
583 Type: *jizomari*

Medallions composed of two cranes with chrysanthemum and *genjiko* symbols; bamboo grass between *tatewaku* lines made of bamboo stalks

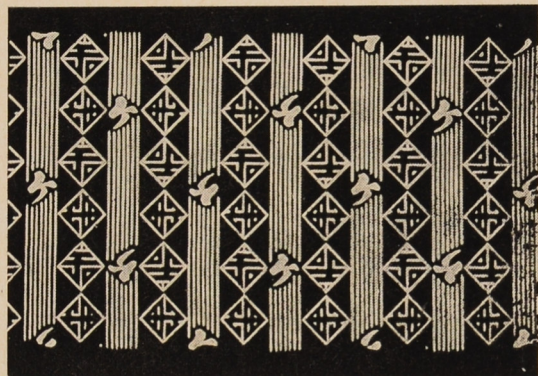
Technique: *tsukibori*; *itoire*
30 X 40 cm [21 cm]

Inv. No. A 10.316

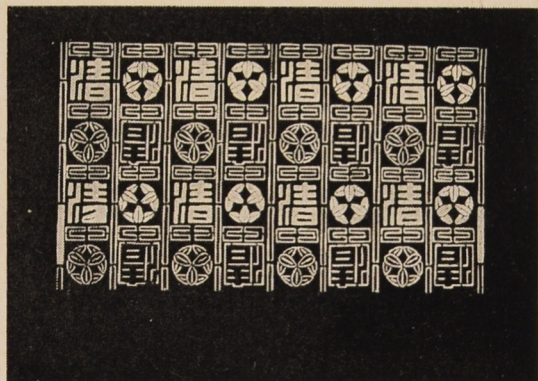
- 584 Type: *jizomari*
tatewaku stripes encircling
 conventionalized pine heads, lozenges
 composed of cranes and pine twig,
 fragmentary star design
 Technique: *kiribori*; *tsukibori*
 40,7 X 63,6 cm (28, 3cm)
 Inv. No. 3.942

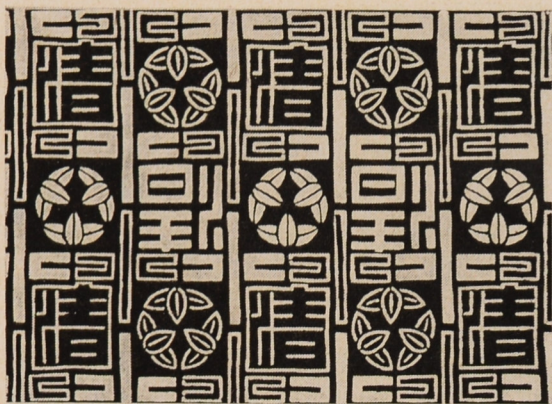


- 585 Type: *jizomari*
 Linear stripes with *katakana* "ke"
 syllable and sequence of alternating
 lozenge-shaped characters (*kotobuki?*)
 Technique: *hikibori*, *tsukibori*; *itoire*
 31,3 X 42,4 cm (19,3 cm)
 Inv. No. A 10.453

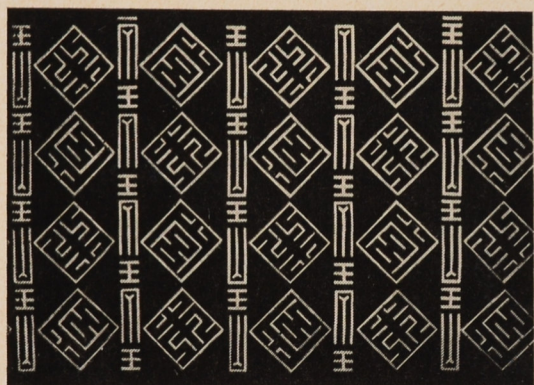


- 586 Type: *jizomari*
 The character "kiyoi" (pure) and
 a crest composed of nine *sasa* leaves
 (*kyūmai sasa*)
 Technique: *tsukibori*; *itoire*
 32,1 X 41,2 cm (18,6 cm)
 Inv. No. A 10.410

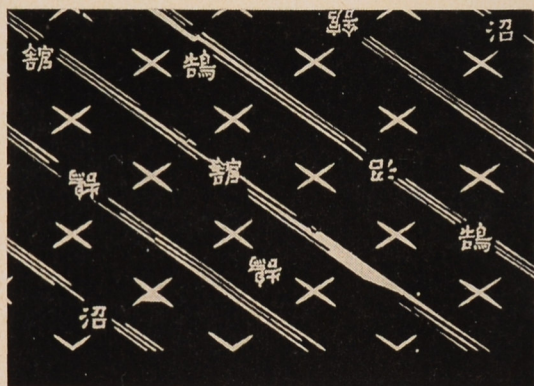




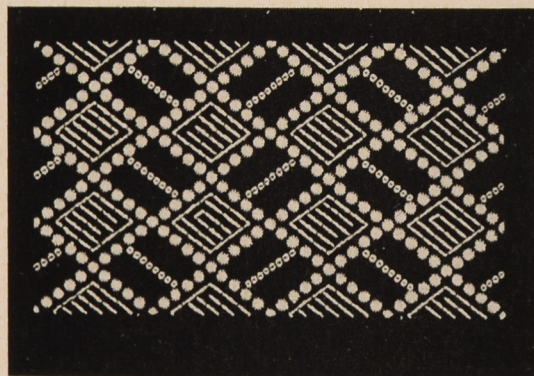
587 Type: *jizomari*
 The same design as No. 586 but for alternating positive and negative complementary linear elements
 Technique: *tsukibori*
 31,4 × 40,1 cm (16,8 cm)
 Inv. No. A 10.101



588 Type: *jizomari*
 Columns of two (?) characters dividing a chequer made up of alternating two other characters
 Technique: *tsukibori*; *itoire*
 32 × 43,6 cm (19,5 cm)
 Inv. No. A 10.418



589 Type: *jizomari*
 Oblique stripes of lines and crosses, characters "numa" (marsh), "kōnotori" (stork) and "yakata" (palace, lodging place)
 Technique: *tsukibori*
 38,2 × 20,4 cm (17 cm)
 Inv. No. A 3.686

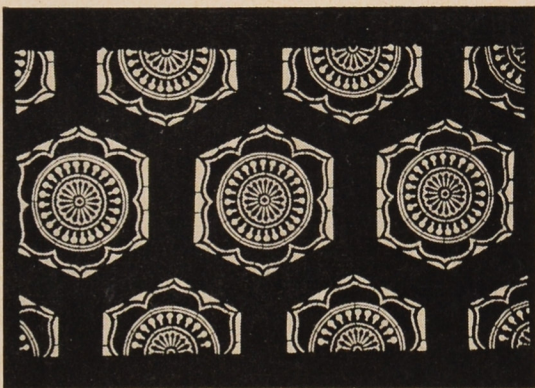


590 Type: *jizomari*
 Lozenge chequer with *genjikō* symbols
 Technique: *dōgubori*, *tsukibori*
 28,8 × 38,2 cm (18,9 cm)
 Inv. No. A 10.355

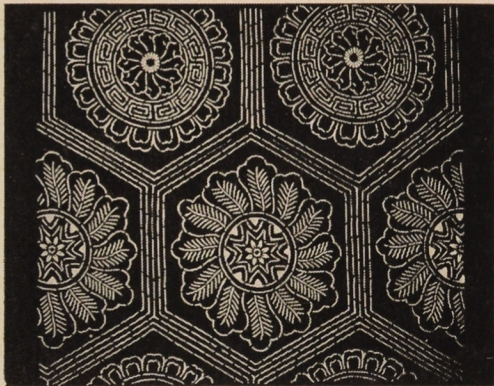
8. Patterns in "Chinese" Style

a) "Brocade" Patterns

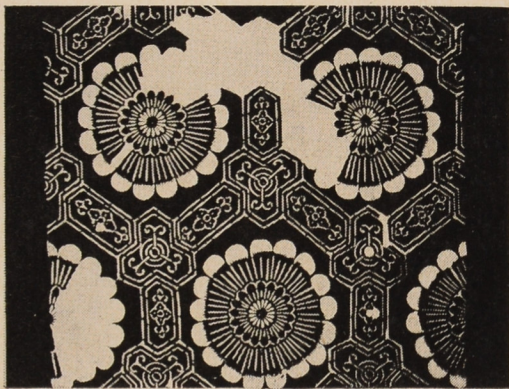
- 591 Type: *jizomari*
kikkō pattern with clematis medallions
encircling conventionalized
chrysanthemums
Technique: *ichimaizuki*, *tsukibori*,
dōgubori
31,6 × 41,3 cm (20,4 cm)
Inv. No. A 10.456



- 592 Type: *jizomari*
kikkō diaper with two kinds
of medallions composed of leafy,
floral and geometric elements
Technique: *tsukibori*
41,5 × 42,8 cm (33,8 cm)
Inv. No. A 10.647



- 593 Type: *jizomari*
kikkō diaper composed of *karahana*
and *karakusa* elements encircling
triple chrysanthemums
Technique: *tsukibori*, *dōgubori*,
ichimaizuki
Damaged
Inv. No. A 10.691



- 594 Type: *jizomari*
kikkō elements with *hōō* birds and
irregular medallions with floral and
geometric elements
Technique: *tsukibori*, *dōgubori*, *kiribori*
Damaged
40,9 × 52 cm (33,2 cm)
Inv. No. A 10.719

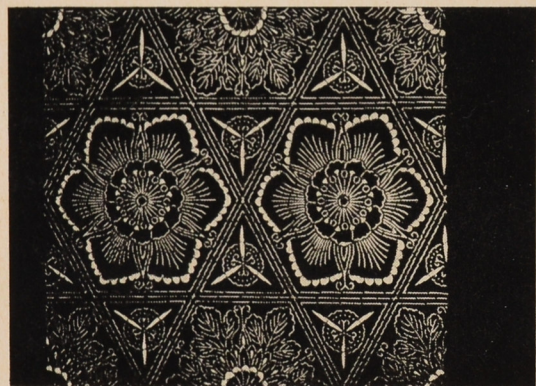




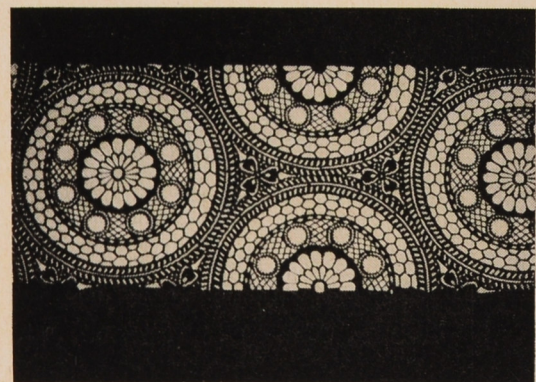
595 Type: *jizomari*
kikkō made up of chain with
 "lion fur" motif, chrysanthemums
 Technique: *tsukibori*, *kiribori*, *ichimaizuki*
 24,3 × 40,5 cm (16,1 cm)
 Inv. No. A 10.133



596 Type: *jizomari*
 Hexagonal and lozenge diaper with
 conventionalized flowers
 Technique: *tsukibori*, *dōgubori*
 40,3 × 48,7 cm (33,7 cm)
 Inv. No. A 10.709



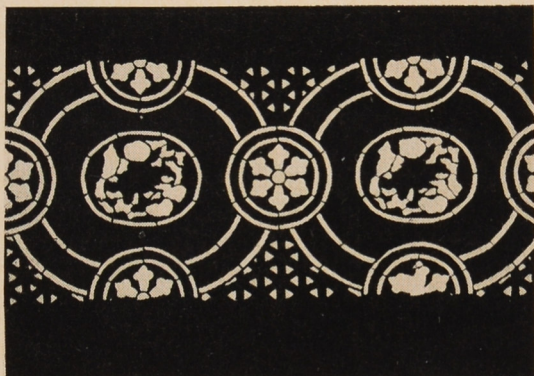
597 Type: *jizomari*
 Hexagonal and triangle diaper
 encircling conventionalized
 chrysanthemums and clematis
 Technique: *tsukibori*, *dōgubori*, *kiribori*
 40,8 × 49 cm (34,3 cm)
 Inv. No. A 10.641



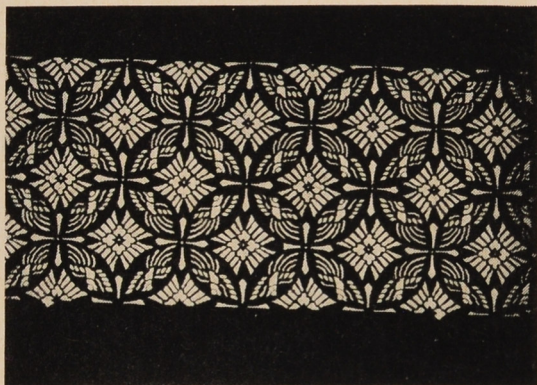
598a Type: *jizomari*
 Circular medallions composed
 of geometric and floral elements
 Technique: *tsukibori*, *kiribori*, *dōgubori*
 25,5 × 41,8 cm (12,3 cm)
 Inv. No. A 10.170

598b The same pattern as No. 598a
 25,2 × 41 cm (12,3 cm)
 Inv. No. A 10.422

- 599 Type: *jizomari*
 Triple oval medallions joint by
 smaller double circles with cloves
 arranged in flower form
 Technique: *tsukibori*
 40,9 × 24,1 cm (15,5 cm)
 Inv. No. A 3.689



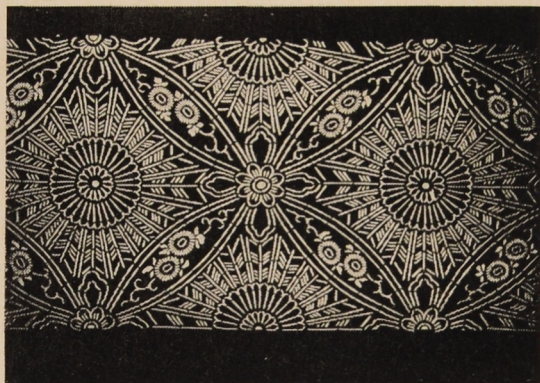
- 600 Type: *jizomari*
shippō pattern with *hōō* birds,
karahana and crosses composed
 of sword blades
 Technique: *tsukibori*, *dōgubori*, *kiribori*
 26,3 × 42 cm (13,8 cm)
 Inv. No. A 10.260

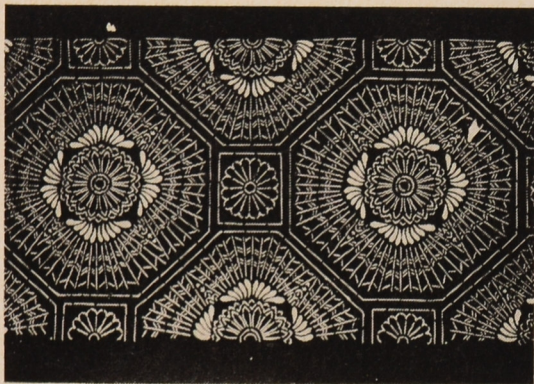


- 601 Type: *jizomari*
shippō pattern with conventionalized
 chrysanthemum, *karahana* and
 paulownia
 Technique: *tsukibori*
 42,2 × 47,3 cm (34,5 cm)
 Inv. No. A 10.716

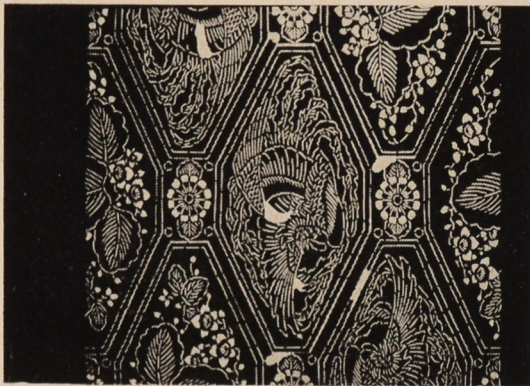


- 602 Type: *jizomari*
shippō pattern with chrysanthemums
 and arrows
 Technique: *tsukibori*, *ichimaizuki*,
dōgubori
 26 × 41,8 cm (15,2 cm)
 Inv. No. A 10.129





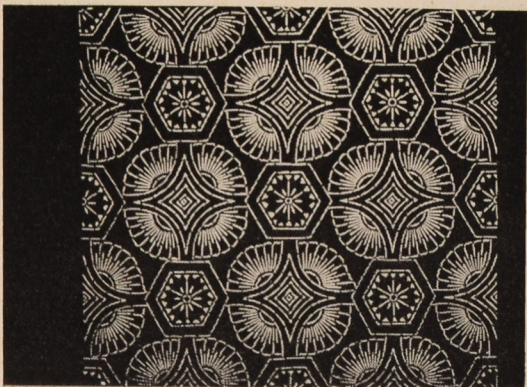
603 Type: *jizomari*
shokkō pattern (system of octagons
 and rectangles) with conventionalized
 chrysanthemums and arrows
 Technique: *tsukibori*, *ichimaizuki*
 24,3 × 40,3 cm (17,2 cm)
 Inv. No. A 10.208



604 Type: *jizomari*
shokkō pattern with *hōō* birds,
 paulownia and chrysanthemums
 Technique: *tsukibori*
 Damaged
 41,8 × 48,1 cm (33,5 cm)
 Inv. No. A 10.749



605 Type: *jizomari*
 Pattern of double squares joint
 by circles with chrysanthemum motifs
 Technique: *tsukibori*, *dōgubori*
 40 × 49,2 cm (33 cm)
 Inv. No. A 10.724



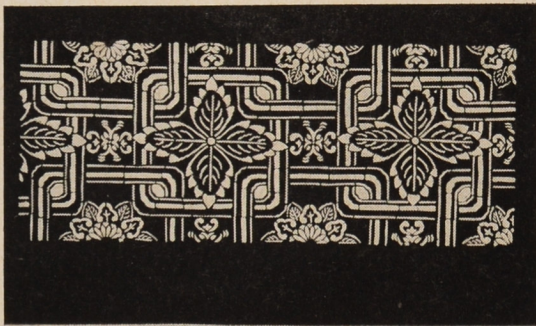
606 Type: *jizomari*
 Larger *shippō* and smaller *kikkō* diapers
 with geometric and floral motifs
 Technique: *tsukibori*, *dōgubori*
 41,5 × 51,8 cm (35 cm)
 Inv. No. A 10.711

607 Type: *jizomari*

Chain of squares (Rokuyata *kōshi*)
encircling leaves and flower motifs

Technique: *tsukibōri*
23,5 × 41,3 cm (14 cm)

Inv. No. A 10.301



608 Type: *jizomari*

fundō pattern with cranes, tortoises,
dragons and chrysanthemums

Technique: *tsukibōri*
41,8 × 48,6 cm (34,5 cm)

Inv. No. A 10.758



609 Type: *jizomari*

fundō pattern with *hōō* birds, *karakusa*
and conventionalized chrysanthemums

Technique: *tsukibōri*
40,7 × 45,3 cm (34 cm)

Inv. No. A 10.653



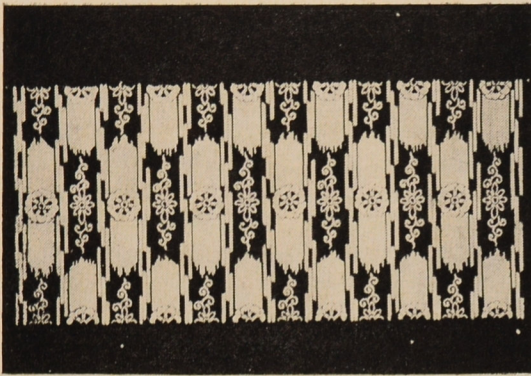
610 Type: *jizomari*

Stripes of geometric and floral elements
alternating with flower medallion
and paulownia

Technique: *tsukibōri*
25,3 × 40,9 cm (15 cm)

Inv. No. A 10.295



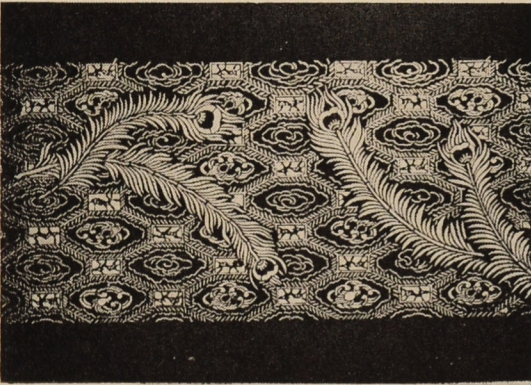


- 611 Type: *jizomari*
 Stripes with flower and *karakusa* scroll
 alternating with the *rimbō* wheel;
kasuri effect
 Technique: *tsukibori*
 26,9 × 41,3 cm (16,3 cm)
 Inv. No. A 10.446

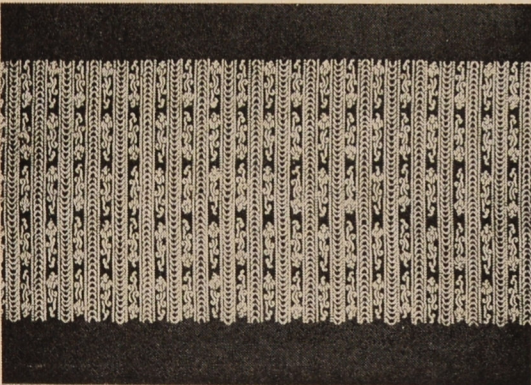


b) Patterns with Dragon
 Motifs

- 612 Type: *jizomari*
 Stripes of various motifs of Chinese
 character: dragons and magic pearl,
 lightning, dragon and *hōō* bird
 medallions and clouds, *karakusa* scrolls
 Technique: *tsukibori*, *kiribori*
 32 × 44,4 cm (16,3 cm)
 Inv. No. A 10.768

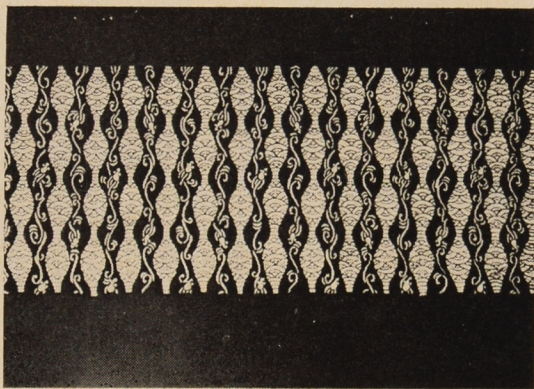


- 613 Type: *jizomari*
 Peacock *feathers* over *shokkō* pattern
 with clouds and *kirins*
 Technique: *tsukibori*, *kiribori*, *ichimaizuki*
 24,4 × 41,3 cm (14,3 cm)
 Inv. No. A 10.269

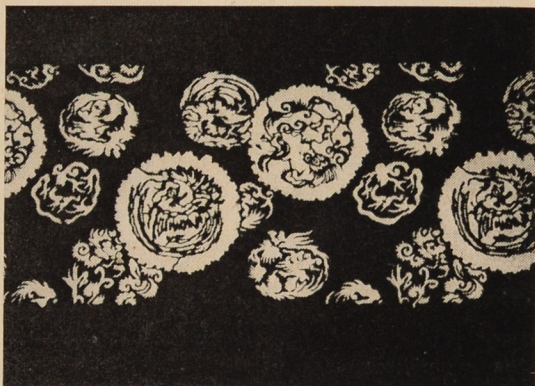


- 614 Type: *jizomari* (*komon?*)
 Stripes of conventionalized rain
 dragons and of water
 Technique: *ichimaiwa*, *tsukibori*, *kiribori*
 25,7 × 41,8 cm (15 cm)
 Inv. No. A 10.176

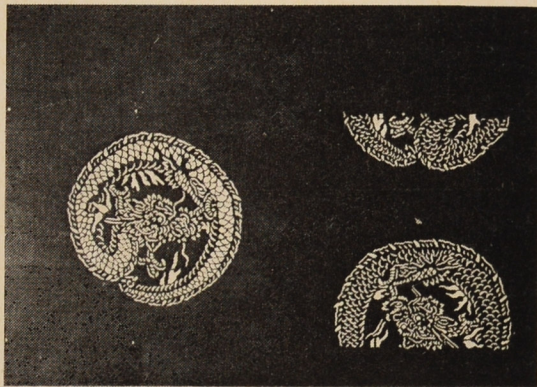
- 615 Type: *jizomari*
 Rain dragons and *seigaiha* waves
 in *tatewaku* system
 Technique: *tsukibori*
 25 × 43,3 cm (12,5 cm)
 Inv. No. A 10.280



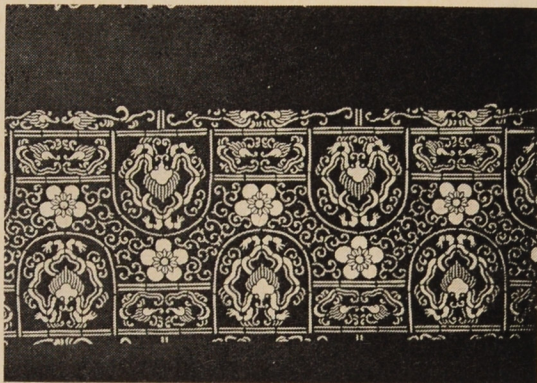
- 616 Type: *jizomari*
 Dragons and *hōō* birds in *mon*-like
 arrangement
 Technique: *tsukibori*; *itoire*
 24,6 × 41 cm (13,2 cm)
 Inv. No. A 10.225



- 617 Type: *jizomari*
 Dragon roundels
 Technique: *tsukibori*
 26,4 × 42,2 cm (15,3 cm)
 Inv. No. A 10.119



- 618 Type: *jizomari*
 Plaques with dragons, *karakusa*
 Technique: *tsukibori*
 24,5 × 41 cm (13,4 cm)
 Inv. No. A 10.145



c) Patterns with Bronze
Vessels, Plaques,
Seal-Script Characters



- 619 Type: *jizomari*
Bronze vessels, *karashishi* figure
on table, ancient seals
Technique: *tsukibori*; *itoire*
40,7 × 60,8 cm (31,3 cm)
Inv. No. 3.936

- 620a Type: *jizomari*
Bronze vessels and plaques with
inscriptions
Technique: *tsukibori*
24,8 × 41 cm (14,1 cm)
Inv. No. A 10.156

- 620b The same pattern as 620a
25,2 × 41,3 cm (14,5 cm)
Inv. No. A 10.157

- 621 Type: *jizomari*
karakusa and ancient seals
Technique: *tsukibori*
24,6 × 41 cm (14,2 cm)
Inv. No. A 10.347





622 Type: *jizomari*
 Stripe with *karahana* and gourd,
 ancient seals with signature of
 Hanabusa Itchō, Kanō Tanyū, Kōrin etc.
 Technique: *tsukibori*; *itoire*
 40,5 × 62,2 cm [34 cm]
 Inv. No. 3.927

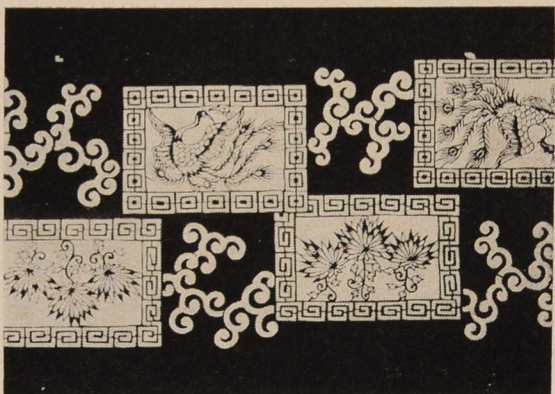


623 Type: *jizomari*
 The character "kotobuki" (longevity)
 in various script types
 Technique: *tsukibori*
 25,3 × 41,1 cm [15,2 cm]
 Inv. No. A 10.049

624 Type: *jizomari*
 Plaques with lucky symbols,
 lotus leaf medallions, *karakusa*
 Technique: *tsukibori*; *itoire*
 Inv. No. A 10.588



625 Type: *jizomari*
 Chinese plaques with peacocks
 or *hōō* birds, phantastic flowers
 of chrysanthemums, *kiri*, *karakusa*
 Technique: *tsukibori*
 25 × 41 cm [14,4 cm]
 Inv. No. A 10.111



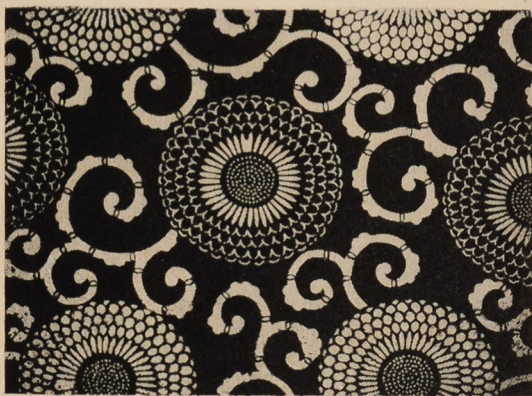


d) *karakusa* and other
Auspicious Motifs
(classical *katazome* patterns
for *futon*, *juroshiki* etc.)

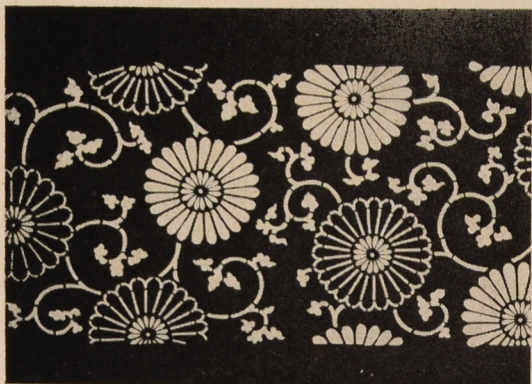
626 Type: *jizomari*
Chrysanthemums and *karakusa*
Technique: *tsukibori*
41,5 × 41,1 cm (34 cm)
Inv. No. A 10.019



627 Type: *jizomari*
Chrysanthemums and *karakusa*
Technique: *tsukibori*, *kiribori*; *itokake*
41,4 × 53,2 cm (35 cm)
Inv. No. A 10.018

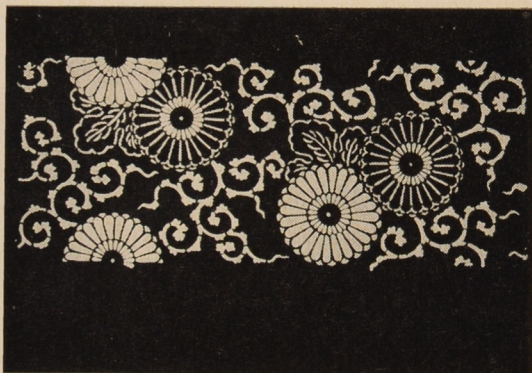


628 Type: *jizomari*
Chrysanthemums and *karakusa*
Technique: *tsukibori*, *ichimaizuki*
31,3 × 41,2 cm (22,8 cm)
Inv. No. A 10.775



629 Type: *jizomari*
Chrysanthemums and *karakusa*
Technique: *tsukibori*, *dōgubori*, *kiribori*
25,7 × 41,7 cm (14,3 cm)
Inv. No. A 10.253

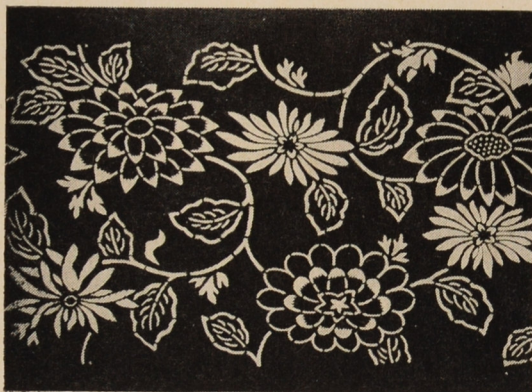
630 Type: *jizomari*
Chrysanthemums and *karakusa*
Technique: *tsukibori*, *ichimaizuki*,
dōgubori, *kiribori*
26,4 × 42,1 cm (14,5 cm)
Inv. No. A 10.312



631 Type: *jizomari*
Chrysanthemums and *karakusa*
Technique: *tsukibori*
24,7 × 40,7 cm (16,4 cm)
Inv. No. A 10.207



632 Type: *jizomari*
Chrysanthemums
Technique: *tsukibori*
25 × 41,5 cm (16,8 cm)
Inv. No. A 10.137



633 Type: *jizomari*
Peonies and *karakusa*
Technique: *tsukibori*, *dōgubori*
41,7 × 50,7 cm (34,3 cm)
Inv. No. A 10.702





634 Type: *jizomari*
Peonies and *karakusa*
Technique: *tsukibori*
31 × 41,4 cm (18,8 cm)
Inv. No. A 10.344



635 Type: *jizomari*
Peonies and *karakusa*
Technique: *tsukibori*
25,3 × 42 cm (17 cm)
Inv. No. A 10.234



636 Type: *jizomari*
Peonies and *karakusa*
Technique: *tsukibori*, *dōgubori*
42,2 × 51,8 cm (33,5 cm)
Inv. No. A 10.695



637 Type: *jizomari*
Peonies and *karakusa*
Technique: *tsukibori*
40,6 × 50,2 cm (33,3 cm)
Inv. No. A 10.648

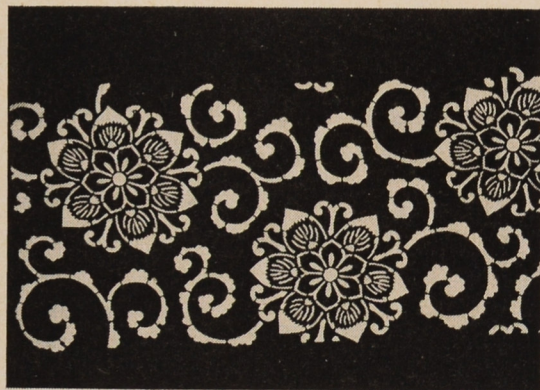
638 Type: *jizomari*
aoi leaves and *karakusa*
Technique: *tsukibori*
31 × 41,6 cm (20 cm)
Inv. No. A 10.378



639 Type: *jizomari*
aoi leaves and *karakusa*
Technique: *tsukibori*
25,6 × 41,7 cm (15,6 cm)
Inv. No. A 10.169



640 Type: *jizomari*
Conventionalized flowers and *karakusa*
Technique: *tsukibori*
26,6 × 42 cm (15,6 cm)
Inv. No. A 10.211



641 Type: *jizomari*
Clematis flowers and *karakusa*
with *aoi* leaves
Technique: *tsukibori*, *kiribori*
30,3 × 42,8 cm (19,4 cm)
Inv. No. A 10.401

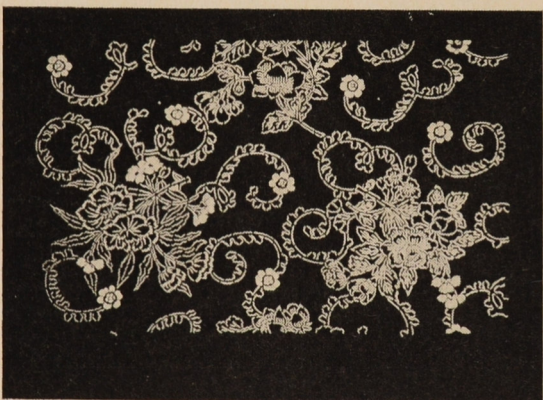




642 Type: *jizomari*
kikyō (Chinese bellflower)
and *karakusa*
Technique: *tsukibori*
32 × 42,1 cm (20,2 cm)
Inv. No. A 10.414



643 Type: *jizomari*
Phantastic flowers and *karakusa*
Technique: *tsukibori*
25,1 × 41,7 cm (15,7 cm)
Inv. No. A 10.474



644 Type: *jizomari*
Flowers and *karakusa*
Technique: *tsukibori*
30,2 × 41,5 cm (21,6 cm)
Inv. No. A 10.407



645 Type: *jizomari*
Butterflies and *karakusa*
Technique: *tsukibori*
26,3 × 41,6 cm (15,8 cm)
Inv. No. A 10.424

646 Type: *jizomari*
Fans and *karakusa*
Technique: *tsukibori*
26,2 × 42 cm (15,4 cm)
Inv. No. A 10.123



647 Type: *jizomari*
Paper butterflies and
karakusa-shaped *noshi* papers
Technique: *tsukibori*, *kiribori*
25,2 × 40,7 cm (16,1 cm)
Inv. No. A 10.142



648a Type: *jizomari*
hōō birds, paulownia and *karakusa*
Technique: *tsukibori*
43 × 53,3 cm (33,2 cm)
Inv. No. A 10.614

648b The same pattern as 648a
42,8 × 54 cm (33,2 cm)
Inv. No. A 10.705





649 Type: *jizomari*
hōō and paulownia medallions,
karakusa
 Technique: *tsukibori*
 42,8 × 53,4 cm (35 cm)
 Inv. No. A 10.642



650 Type: *jizomari*
 Cranes with pine and plum twigs,
 cloud-shaped *karakusa*
 Technique: *tsukibori*
 40,5 × 48,2 cm (33,6 cm)
 Inv. No. A 10.615



651 Type: *jizomari*
 Crane in clouds and tortoise in sea
 medallions, *karakusa*
 Technique: *tsukibori*
 41,4 × 46,5 cm (33,3 cm)
 Inv. No. A 10.655

652 Type: *jizomari*
Cranes and tortoises, cloud-karakusa
Technique: *tsukibori*, *kiribori*
33,5 × 42,5 cm (20,4 cm)
Inv. No. A 10.632



653 Type: *jizomari*
Cranes and tortoises, leafy karakusa
Technique: *tsukibori*
30,2 × 39,2 cm (19,5 cm)
Inv. No. A 10.765



654 Type: *jizomari*
Tortoises, scrolls, plum flowers,
cloud-shaped karakusa
Technique: *tsukibori*, *dōgubori*
41,1 × 48,7 cm (34,3 cm)
Inv. No. A 10.651



655 Type: *jizomari*
"Chinese lions" (*karashishi*)
and phoenixes (*hōō*), karakusa
Technique: *tsukibori*, *dōgubori*
25,7 × 41,3 cm (15,2 cm)
Inv. No. A 10.204





656 Type: *jizomari*
 Dragons and *karakusa*
 with magic pearls and mane
 Technique: *tsukibori*
 42,3 × 53,3 cm (33,3 cm)
 Inv. No. A 10.645

657a Type: *jizomari*
 Tortoises, cranes, bamboo leaves,
 clouds with geometric designs
 Technique: *tsukibori*, *kiribori*
 42,8 × 53 cm (34 cm)
 Inv. No. A 10.760

657b The same pattern as 657a
 41,6 × 51,6 cm (32,8 cm)
 Inv. No. A 10.654



658 Type: *jizomari*
hagoromo (the heavenly maiden's gown
 of feathers) and clouds
 Technique: *tsukibori*
 42,2 × 52,7 cm (33,7 cm)
 Inv. No. A 10.712



659 Type: *jizomari*
Cranes and clouds
Technique: *tsukibori*
35,6 × 44,3 cm (22,7 cm)
Inv. No. A 10.697



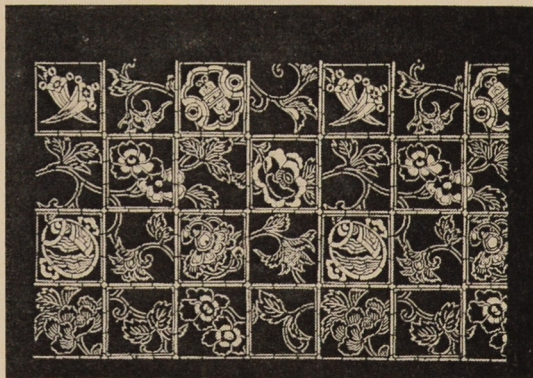
660 Type: *jizomari*
hōō birds and clouds
Technique: *tsukibori*, *ichimaizuki*; *itoire*
Trade mark "Bizenya"
40,3 × 50 cm (34 cm)
Inv. No. A 10.678



661 Type: *jizomari*
Chinese fan and hat, *noshi* bundles,
oranges
Technique: *tsukibori*
39,8 × 50,3 cm (32,5 cm)
Inv. No. A 10.723



662 Type: *jizomari*
Symbols of good fortune and
flowering *karakusa* tendrils
in square lattice
Technique: *tsukibori*
30,9 × 40,6 cm (21,9 cm)
Inv. No. A 10.001



9. Motifs Taken from Nature

a) Flora in more or less
Realistic Representation



663 Type: *jizomari*
Chrysanthemums
Technique: *tsukibori*
25,2 × 41,2 cm (14 cm)
Inv. No. A 10.138



664 Type: *jizomari*
Chrysanthemums
Technique: *tsukibori*
25,6 × 41,4 cm (13,8 cm)
Inv. No. A 10.497

665 Type: *jizomari*
Chrysanthemums
Technique: *tsukibori*; *itoire*
41 × 63,3 cm (33,7 cm)
Inv. No. 3.906



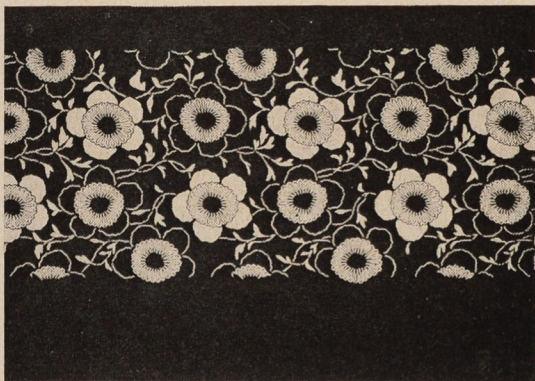
666 Type: *jizomari*
Irises
Technique: *tsukibori*; *itoire*
26,4 × 41,8 cm (22,2 cm)
Inv. No. A 10.041



667 Type: *jizomari*
Cherry twigs
Technique: *tsukibori*
25,2 × 40,8 cm (14,2 cm)
Inv. No. A 10.043



668 Type: *jizomari*
Blooming tendrils
Technique: *tsukibori*
25,9 × 41,6 cm (13,4 cm)
Inv. No. A 10.254

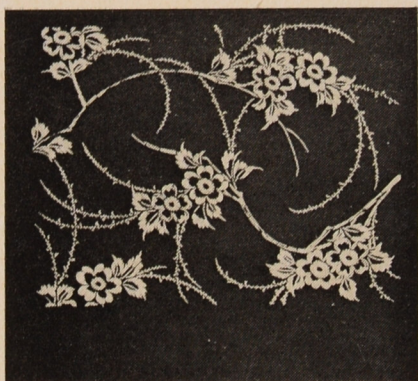


669 Type: *jizomari*
Twigs with leaves and fruits
Technique: *tsukibori*; *itoire*
25,2 × 41,1 cm (14,7 cm)
Inv. No. A 10.223

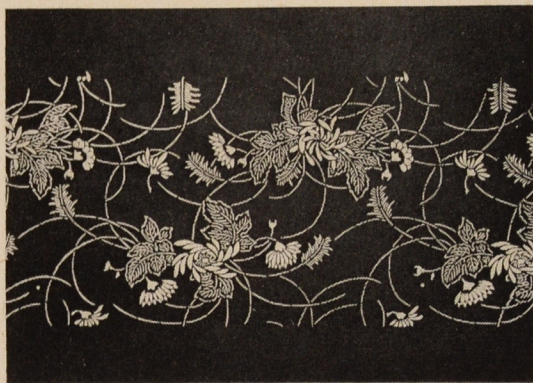


670 Type: *jizomari*
hagi (*Lespedeza bicolor*) and *susuki*
(*Miscanthus sinensis*)
Technique: *tsukibori*
39,2 × 41,5 cm (26,5 cm)
Inv. No. A 10.671

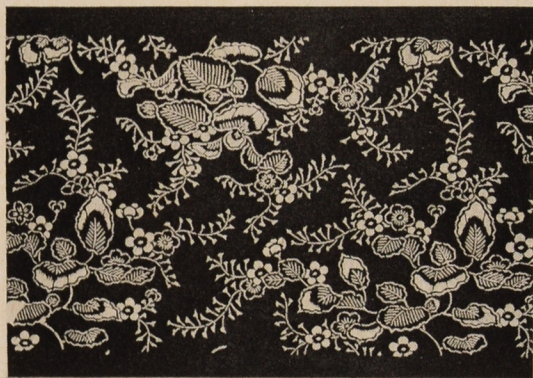




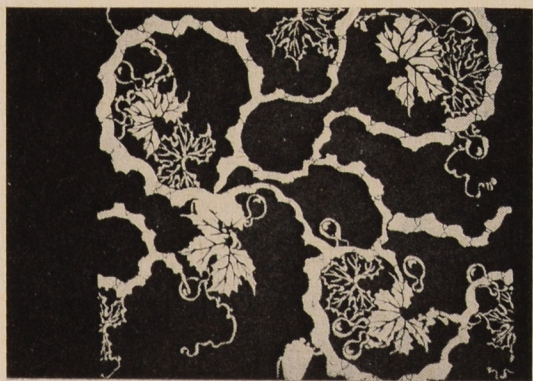
671 Type: *jizomari*
Blooming cherry twigs
Technique: *tsukibori*
39,1 X 42,2 cm (26,1 cm)
Inv. No. A 10.611



672 Type: *jizomari*
Chrysanthemums and grass
Technique: *tsukibori*
25,7 X 41,6 cm (13,7 cm)
Inv. No. A 10.042

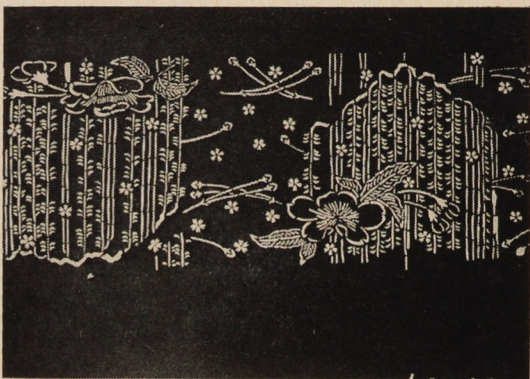


673 Type: *jizomari*
Paulownia twigs
Technique: *tsukibori*
21,8 X 38,7 cm (14,7 cm)
Inv. No. A 10.029

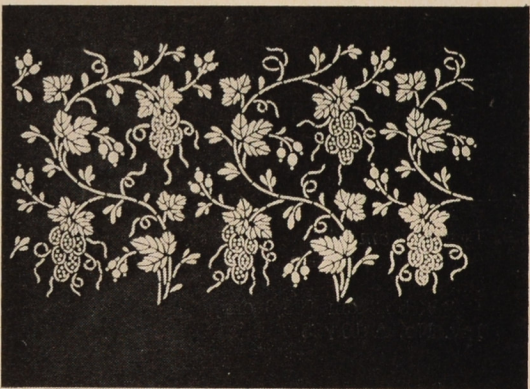


674 Type: *jizomari*
Gourds
Technique: *tsukibori*; *itoire*
40,2 X 44 cm (32,8 cm)
Inv. No. A 10.689

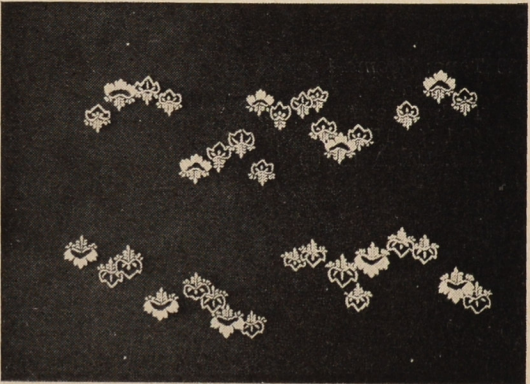
675 Type: *jizomari*
Cherry and pine needles
Technique: *tsukibori, dōgubori*
24,1 × 41,3 cm (11,7 cm)
Inv. No. A 10.267



676 Type: *jizomari*
Vine
Technique: *tsukibori, kiribori*
29,5 × 43,2 cm (18,6 cm)
Inv. No. A 10.324



677 Type: *jizomari*
Paulownia
Technique: *tsukibori*
31 × 43,2 cm (19 cm)
Inv. No. A 10.357





678 Type: *jizomari*
 Radish and turnip
 Damaged
 42,2 × 54,8 cm (33,3 cm)
 Inv. No. A 10.738



679 Type: *jizomari*
 Bamboo
 Technique: *tsukibori*
 41 × 63 cm (34,7 cm)
 Inv. No. 3.896

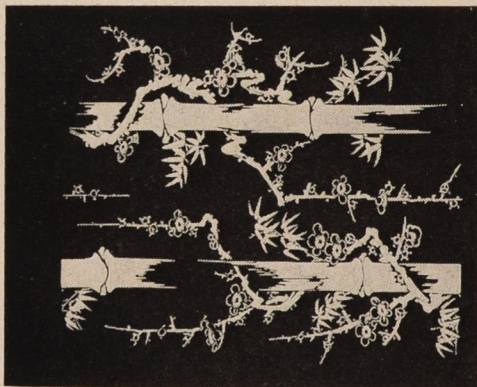
680 Type: *jizomari*
 Bamboo
 Technique: *tsukibori; itoire*
 40,1 × 40,5 cm (31,6 cm)
 Inv. No. A 10.669



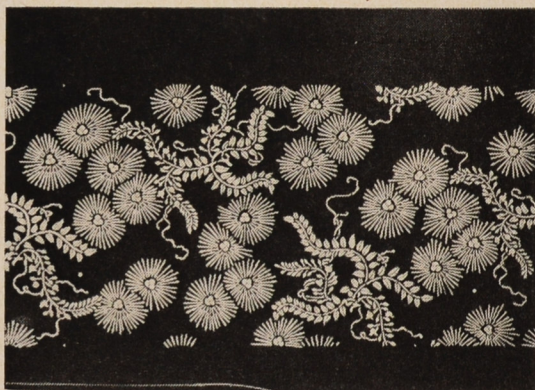
681 Type: *jizomari*
 Snow-laden bamboo
 Technique: *tsukibori; itoire*
 Damaged
 41,6 × 64,8 cm (32,5 cm)
 Inv. No. A 10.644



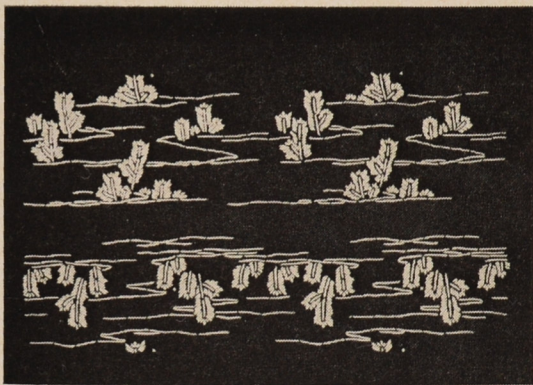
682 Type: *jizomari*
Bamboo and plum
Technique: *tsukibori*; *itoire*
40,8 X 47,2 cm (31,6 cm)
Inv. No. A 10.610



683 Type: *jizomari*
Pine and wistaria
Technique: *tsukibori*
25 X 41,1 cm (14 cm)
Inv. No. A 10.136



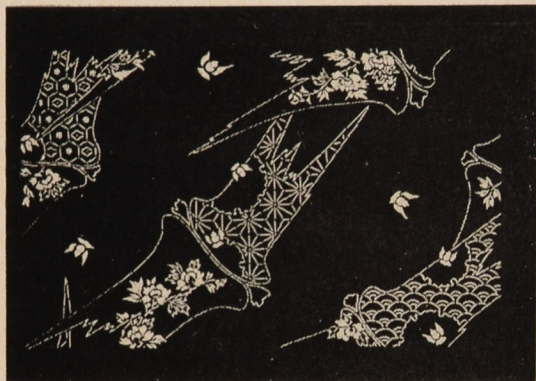
684 Type: *jizomari*
Young pines
Technique: *tsukibori*
30 X 41,3 cm (20 cm)
Inv. No. A 10.348



b) Vegetative Motifs
with Geometric Designs

685 Type: *jizomari*
Gourd and *seigaiha* ornament
Technique: *tsukibori*; *itotake*
30 X 40,3 cm (21 cm)
Inv. No. A 10.434





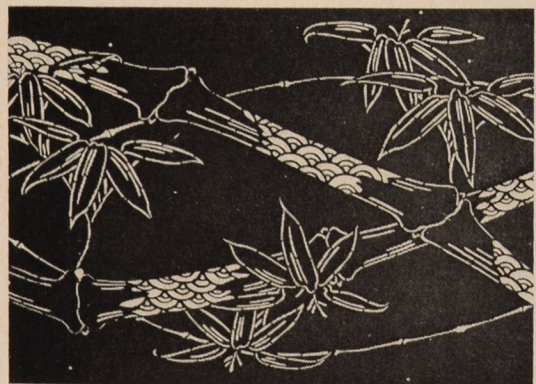
686 Type: *jizomari*
 Bamboo and sparrows, peonies,
kikkō, *asanoha* and *seigaiha* diapers
 Technique: *tsukibori*
 31 × 40 cm [21,2 cm]
 Inv. No. A 10.336



687 Type: *jizomari*
 Bamboo, plum, fern, *seigaiha*
 and *kikkō* diapers
 Technique: *tsukibori*
 30,6 × 41,6 cm [20,1 cm]
 Inv. No. A 10.433



688 Type: *jizomari*
 Paulownia, bamboo, *asanoha* diaper
 Technique: *kiribori*, *tsukibori*, *dōgubori*
 31 × 40,5 cm [22,5 cm]
 Inv. No. A 10.481



689 Type: *jizomari*
 Bamboo and *seigaiha* pattern
 Technique: *tsukibori*
 31,3 × 41,5 cm [19,5 cm]
 Inv. No. A 10.075

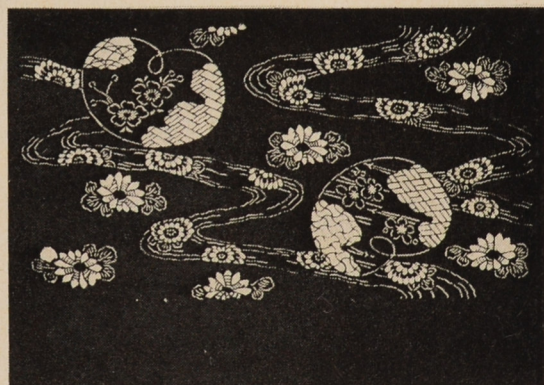
- 690 Type: *jizomari*
 Cherry, key fret design
 Technique: *tsukibori*; *itoire*
 30,2 X 41,5 cm (19,7 cm)
 Inv. No. A 10.313



- 691 Type: *jizomari*
 sakura blossoms and *shōchikubai* design:
 plum in *matsukawabishi* medallions
 and *sasa* leaves
 Technique: *tsukibori*, *kiribori*, *dōgubori*
 25,8 X 41,4 cm (14,4 cm)
 Inv. No. A 10.270

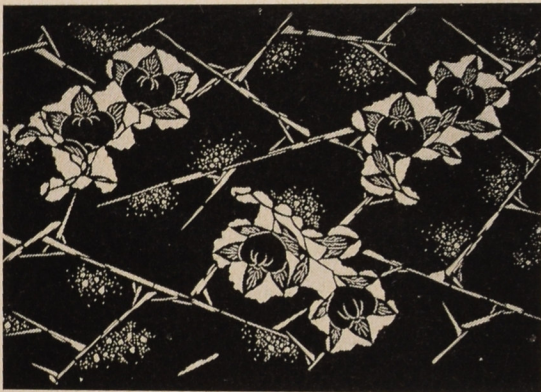


- 692 Type: *jizomari*
 Water stream with chrysanthemum
 flowers, lotus-leaf medallions
 with *sakura*, *fundō* and *shōchikubai*:
 plum blossoms, pine needle, *ajiro* and
higaki weave (for bamboo)
 Technique: *tsukibori*
 30 X 41,1 cm (18,8 cm)
 Inv. No. A 10.441



- 693 Type: *jizomari*
 Chrysanthemums and maple leaves
 with *asanoha* diaper
 Technique: *tsukibori*
 29,8 X 42 cm (19,7 cm)
 Inv. No. A 10.372





694 Type: *jizomari*
Mandarin orange (*tachibana*, *Citrus nobilis*) and irregular lattice
Technique: *tsukibori*, *kiribori*
30,8 X 41,6 cm (19,6 cm)
Inv N.o. A 10.593



695 Type: *jizomari*
Clematis, *hagi*, wild geese and reeds,
chain design
Technique: *tsukibori*
29 X 41 cm (18,5 cm)
Inv. No. A 10.448

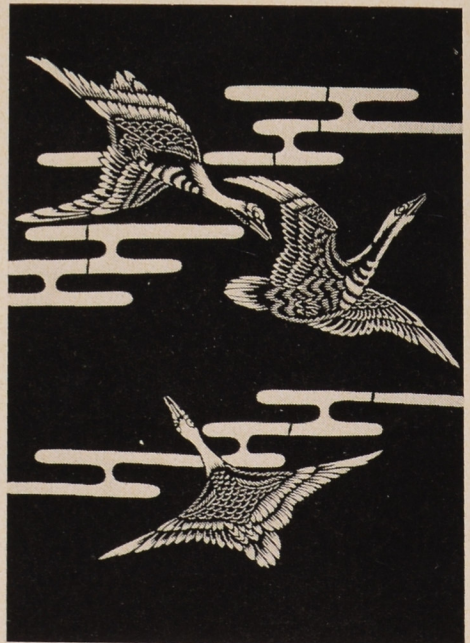
696 Type: *jizomari*
Tigers and bamboo (*take ni tora*)
Technique: *tsukibori*; *itoire*
40,8 X 63,3 cm (33 cm)
Inv. No. 3.950



c) Fauna, Human Figures

697a Type: *jizomari*
Wild geese and clouds
Technique: *tsukibori*; *itoire*
40 X 50,7 cm (33,6 cm)
Inv. No. A 10.733

697b The same design as 697a
42,8 X 52 cm (34,6 cm)
Inv. No. A 10.666



698a Type: *jizomari*
Wild geese, reeds and clouds
Technique: *tsukibori*; *itoire*
41,6 × 51,3 cm (34,2 cm)
Inv. No. A 8.692



698b The same design as 698a
40,7 × 64,5 cm (34,5 cm)
Inv. No. 3.952

699 Type: *jizomari*
Wild geese and clouds
Technique: *tsukibori*; *itoire*
24 × 41 cm (15,2 cm)
Inv. No. A 10.403

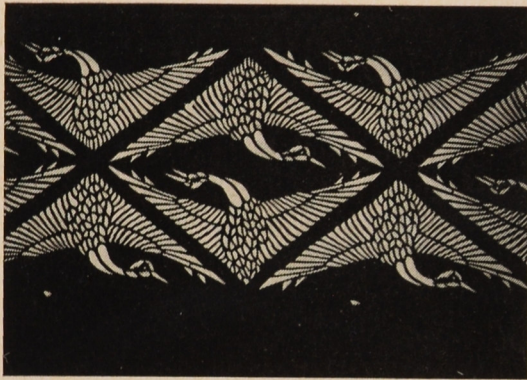


700 Type: *jizomari*
Cranes and bamboo
Technique: *tsukibori*; *itoire*
Trade mark "Osamu", "Keisakuchō"
31 × 41,8 cm (21,4 cm)
Inv. No. 16.440

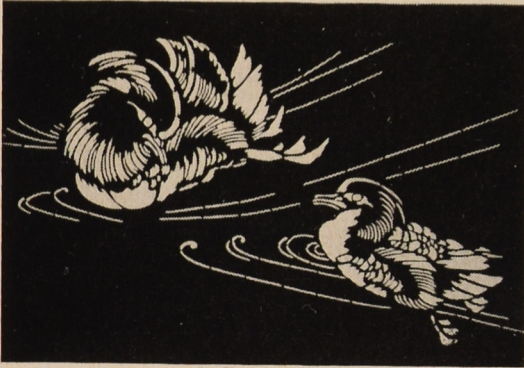


701 Type: *jizomari*
Cranes and pines
Technique: *tsukibori*
33,3 × 41,1 cm (18,6 cm)
Inv. No. A 10.097





702 Type: *jizomari*
Cranes in heraldic arrangement
Technique: *tsukibori*
26,5 × 42 cm (13 cm)
Inv. No. A 10.397



703 Type: *jizomari*
Pair of mandarin ducks (symbol
of matrimonial happiness)
Technique: *tsukibori*
20,9 × 37,1 cm (17 cm)
Inv. No. 33.782

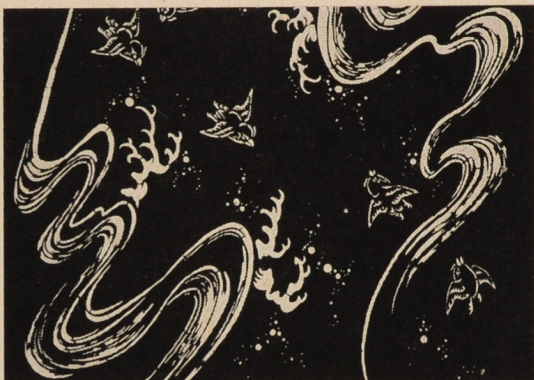


704 Type: *jizomari*
Plovers and waves (*nami ni chidori*)
Technique: *tsukibori*
31 × 40,7 cm (22,2 cm)
Inv. No. A 10.583



705 Type: *jizomari*
Plovers and willow twigs (algae?)
Technique: *tsukibori*
31,6 × 41,7 cm (22,6 cm)
Inv. No. 35.523

706 Type: *jizomari*
Plovers and waves
Technique: *tsukibori*; *itoire*
41 X 49,6 cm (35,1 cm)
Inv. No. A 10.607



707 Type: *jizomari*
Wooing sparrows (*jukurasuzume*)
and rice sheaves
Technique: *tsukibori*
31 X 41,2 cm (22,1 cm)
Inv. No. A 10.663



708 Type: *jizomari*
Wooing sparrows and *hagi*
Technique: *tsukibori*
28,7 X 40,6 cm (18,6 cm)
Inv. No. A 10.087



709 Type: *jizomari*
Bats, *susuki* grass and *hagi*
in *kasuri* effect
Technique: *tsukibori*, *kiribori*
29,9 X 41,3 cm (20,5 cm)
Inv. No. 35.521





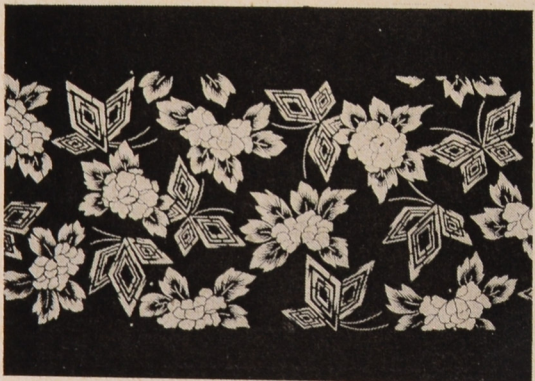
710 Type: *jizomari*
Butterflies with flower motifs
and paulownia twigs
Technique: *tsukibori*
30,3 × 41,3 cm (20,5 cm)
Inv. No. A 10.352



711 Type: *jizomari*
Butterflies and maple
Technique: *tsukibori*
30,2 × 41,6 cm (20,7 cm)
Inv. No. A 10.319

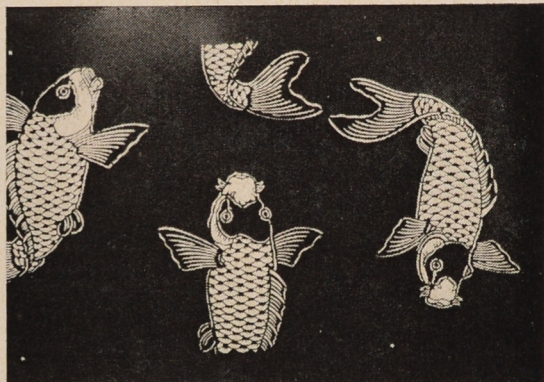


712 Type: *jizomari*
origami butterflies with wistaria
and *seigaiha* motifs, bamboo
Technique: *tsukibori*; *itoire*
30 × 40,3 cm (21,2 cm)
Inv. No. A 10.077

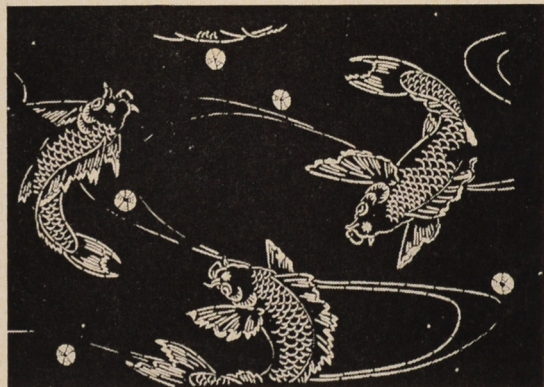


713 Type: *jizomari*
Butterflies and peonies
Technique: *tsukibori*; *itoire*
25,3 × 41 cm (14,3 cm)
Inv. No. A 10.278

714 Type: *jizomari*
Carps
Technique: *tsukibori; itoire*
24,5 × 41 cm (16,5 cm)
Inv. No. A 10.134



715 Type: *jizomari*
Frolicking carps
Technique: *tsukibori, dōgubori*
29,7 × 40,3 cm (19,6 cm)
Inv. No. A 10.068



716 Type: *jizomari*
Lobsters
Technique: *tsukibori; itoire*
31 × 21 cm (21,8 cm)
Inv. No. 35.520



717 Type: *jizomari*
Iris, crab (*kani*) and the word "*kani*"
in Roman letters
Technique: *tsukibori*
25,6 × 41,8 cm (16,2 cm)
Inv. No. A 10.291





718 Type: *jizomari*
 Street scenes
 Technique: *tsukibori*
 25,5 X 40, 7cm (13,8 cm)
 Inv. No. 35.526



d) Water

719 Type: *jizomari*
 Stormy waves
 Technique: *tsukibori; itoire*
 39,3 X 41,3 cm (29,2 cm)
 Inv. No. A 10.679



720 Type: *jizomari*
 Stormy waves
 Technique: *tsukibori; itoire*
 39,5 X 41,6 cm (28,9 cm)
 Inv. No. A 10.643

721 Type: *jizomari*
 Whirlpool
 Technique: *tsukibori; itoire*
 52,5 × 41,7 cm (31 cm)
 Inv. No. A 10.734

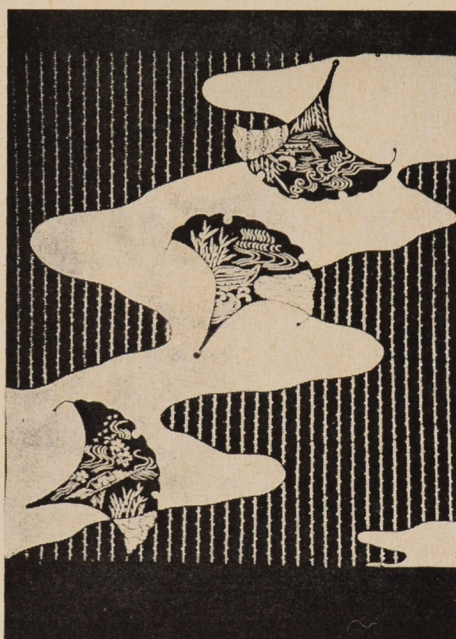


e) "Water Stream" Making
 Part of Background

722 Type: *jizomari*
 Shells with beach scenery, background
 of stripes with trefoils
 Technique: *tsukibori, kiribori; itoire*
 41,8 × 53,5 cm (35 cm)
 Inv. No. A 10.677



723 Type: *jizomari*
 Gingko leaves with river scenery
 and geometric motifs;
 background of regular tendril stripes
 Technique: *tsukibori, kiribori; itoire*
 42,6 × 53 cm (33 cm)
 Inv. No. A 10.761



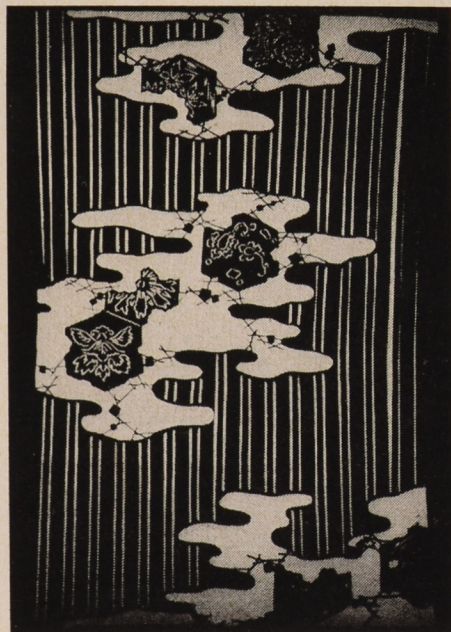


724 Type: *jizomari*
 Irregular medallions with *hōō* bird,
 tea ceremony utensils, flowers etc.,
 background of waves
 Technique: *tsukibori*, *kiribori*; *itoire*
 43,6 × 53,5 cm (34,8 cm)
 Inv. No. A 10.715



725 Type: *jizomari*
 Lacquer boxes decorated with various
 motifs: geese flying over waves, pine,
shōchikubai etc., twigs of willow
 in the background
 Technique: *tsukibori*; *itoire*
 43,4 × 52,5 cm (34,3 cm)
 Inv. No. A 10.673

726 Type: *jizomari*
 "Clouds" or "pools" with fragmentary
 hexagons and floral motifs over
 double stripes
 Technique: *tsukibori*, *hikibori*; *itoire*
 41,5 × 63,4 cm (32,3 cm)
 Inv. No. 3.946

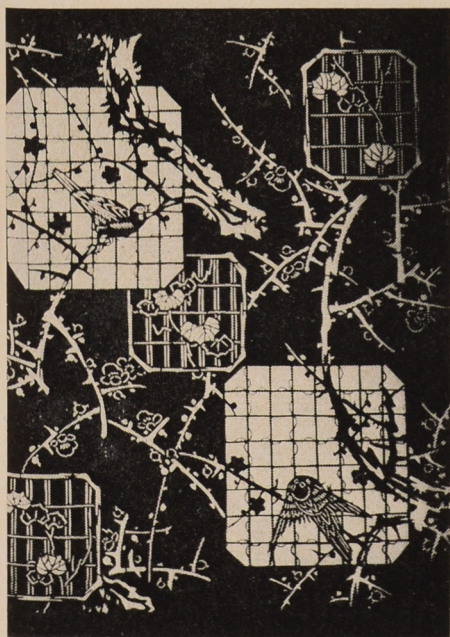


f) Designs Containing
Medallions with Positive
(*jishiro*) Motifs

727 Type: *jizomari*
Plum tree and bush warbler
Technique: *tsukibori*; *itoire*
39,2 × 53 cm (32,5 cm)
Inv. No. A 10.728



728 Type: *jizomari*
Plum and bush warbler, ivy
Technique: *tsukibori*; *itoire*
41,5 × 50,3 cm (34,2 cm)
Inv. No. A 10.684

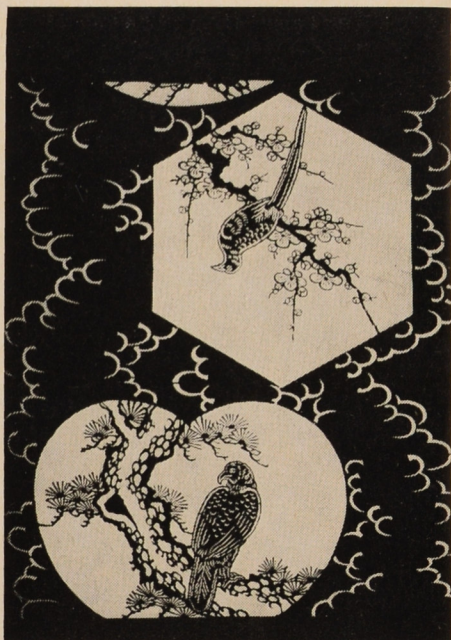


729 Type: *jizomari*
shōchikubai (bamboo, plum, pine),
medallions shaped as Daikoku's mallet
and *fundō*
Technique: *tsukibori*; *itoire*
39,3 × 51,5 cm (32,9 cm)
Inv. No. A 10.696





730 Type: *jizomari*
 Bamboo and plum in haze-shaped
 medallions
 Technique: *tsukibori*; *itoire*
 41,7 × 50,8 cm [34,3 cm]
 Inv. No. A 10.707



731 Type: *jizomari*
 Hawk on pine tree in lotos-leaf
 medallions, cuckoo (*hototogisu*)
 on plum tree in hexagon, waves
 in background
 Technique: *tsukibori*; *itoire*
 41,4 × 51,8 cm [32,2 cm]
 Inv. No. A 10.668

732 Type: *jizomari*
 Fans with pine branches
 Technique: *tsukibori*; *itoire*
 42,4 × 60,9 cm [34,3 cm]
 Inv. No. A 8.690



733 Type: *jizomari*
hagi and medallions with floral
 and other motifs
 Technique: *tsukibori*; *itoire*
 41,9 × 63 cm [33,6 cm]
 Inv. No. 3.922





734 Type: *jizomari*
 Water plantain and waves,
 conventionalized "Chinese" motifs
 Technique: *tsukibori*; *itoire*
 40,8 × 62,5 cm (34,2 cm)
 Inv. No. 3.953

736a Type: *jizomari*
 Pines, waves and books with umbrellas
 and willows
 Technique: *tsukibori*; *itoire*
 41 × 53 cm (35,2 cm)
 Inv. No. A 10.757

736b The same design as 736a
 41 × 53 cm (34,2 cm)
 Inv. No. A 10.694



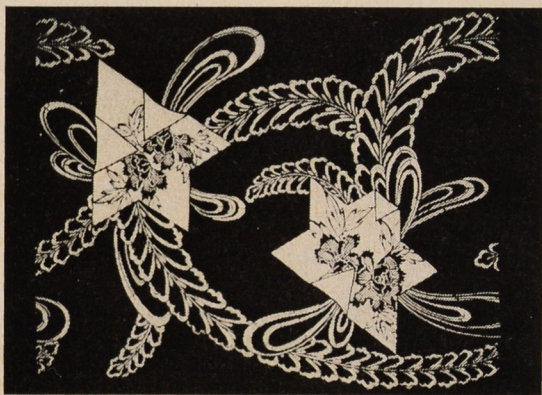
735 Type: *jizomari*
 Tortoises and lacquer boxes with
 plovers and waves, irises and pines
 motifs, in waves (Urashimatarō story ?)
 Technique: *tsukibori*; *itoire*
 38,6 × 52,8 cm (31,3 cm)
 Inv. No. A 10.701

737 Type: *jizomari*
 Cobweb, bats, ivy and old bamboo fence
 Technique: *tsukibori*; *itoire*
 42,5 × 49,2 cm (33,5 cm)
 Inv. No. A 10.681





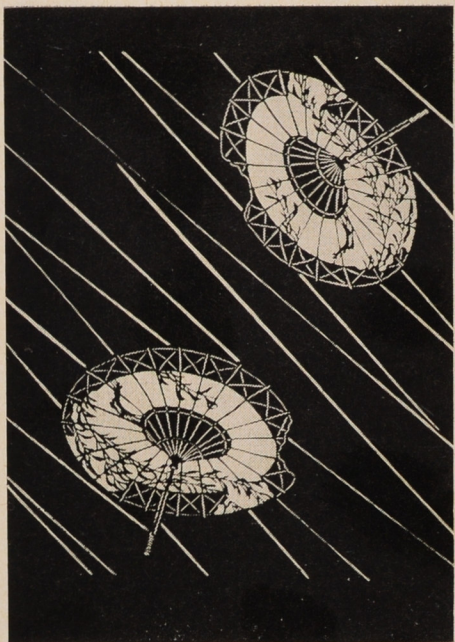
738 Type: *jizomari*
 Sparrows and bamboo, peonies,
 ornamental bands
 Technique: *tsukibori*; *itoire*
 38,9 x 53,2 cm (34,4 cm)
 Inv. No. A 10.665



739 Type: *jizomari*
 Peonies on *origami* papers, wistaria,
 ribbons
 Technique: *tsukibori*; *itoire*
 39,2 x 54,3 cm (31,4 cm)
 Inv. No. 3.898



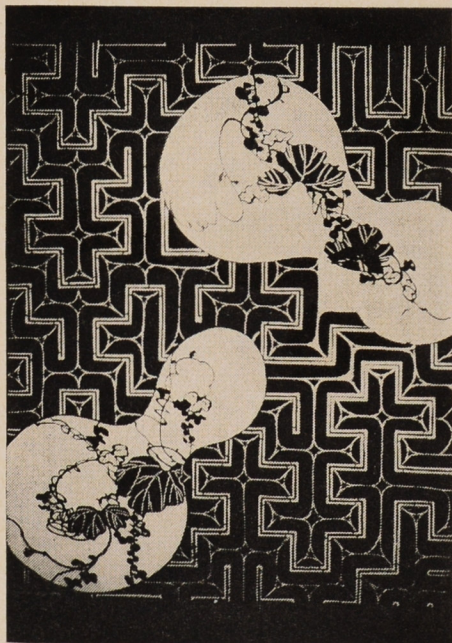
740 Type: *jizomari*
 Willow twigs, fan papers with human
 figures on a bridge, and with
 chrysanthemum, old manuscripts
 Technique: *tsukibori*; *itoire*
 42,3 x 49 cm (34,8 cm)
 Inv. No. A 10.744



741a Type: *jizomari*
 Old umbrellas with willow motif in rain
 Technique: *tsukibori, hikibori; itoire*
 41 × 51,2 cm (33,7 cm)
 Inv. No. A 10.751

741b The same design as 741a
 42,1 × 52,7 cm (34,8 cm)
 Inv. No. A 10.726

743 Type: *jizomari*
 Gourd-shaped medallions with vine
 over geometric background
 Technique: *tsukibori; itoire*
 41,1 × 54,2 cm (33,8 cm)
 Inv. No. A 10.759



742a Type: *jizomari*
 Weeping willow and umbrellas
 with peonies
 Technique: *tsukibori; itoire*
 40,3 × 51,3 cm (32 cm)
 Inv. No. A 10.670

742b The same design as 742a
 41,2 × 54,4 cm (33,4 cm)
 Inv. No. A 10.763

744 Type: *jizomari*
 Fan-paper medallions with *shōchikubai*
 design (plum, pine and *yakago* —
 bamboo embankment basket) and lamps,
 geometric background
 Technique: *tsukibori, kiribori; itoire*
 40,1 × 54 cm (33,5 cm)
 Inv. No. A 10.646



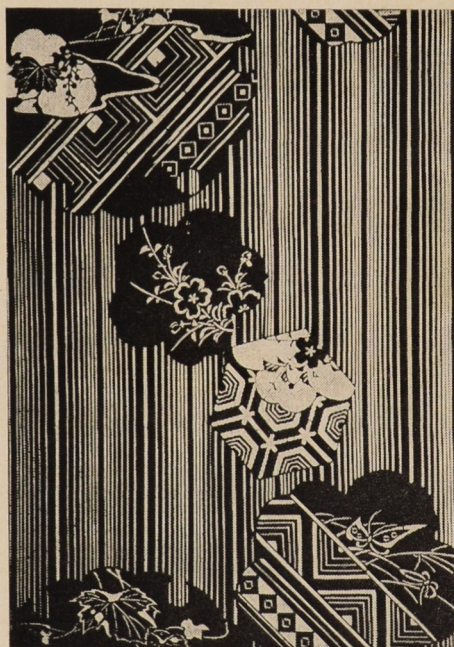


745 Type: *jizomari*
 Wooing sparrows and bamboo leaves
(take ni suzume), background
 of bamboo lattice and dispersed
 twig fragments
 Technique: *tsukibori, kiribori*
 29 X 41,5 cm (18,8 cm)
 Inv. No. A 10.377



746 Type: *jizomari*
 Wistaria over striped background
 Technique: *tsukibori, hikibori; itoire*
 41,1 X 60,5 cm (34,5 cm)
 Inv. No. 3.916

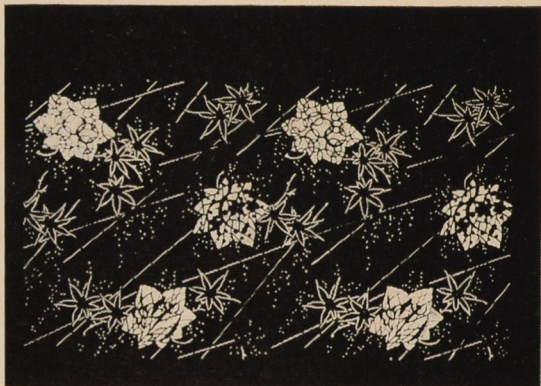
747 Type: *jizomari*
 Nature and geometric designs
 in floral and geometric medallions,
 striped ground
 Technique: *tsukibori, hikibori; itoire*
 40,6 X 55,3 cm (34,7 cm)
 Inv. No. A 10.699



- 748 Type: *jizomari*
 Sparrows and bamboo, irises and
 lotos leaves, striped ground
 Technique: *tsukibori*
 31,2 × 40,6 cm (20,3 cm)
 Inv. No. A 10.088



- 749 Type: *jizomari*
 Maple leaves in rain, plum, iris,
 irregular *shippō* motif
 Technique: *tsukibori*, *kiribori*
 30 × 41,3 cm (19,8 cm)
 Inv. No. A 10.315



- 750 Type: *jizomari*
 Chrysanthemums and paulownia
 Technique: *tsukibori*
 29,8 × 40,9 cm (20,3 cm)
 Inv. No. A 10.440





g) Scenery

- 751 Type: *jizomari*
 Buddhist temple in mountains
 Technique: *tsukibori*
 52,3 × 41 cm (34,5 cm)
 Inv. No. A 3.690



- 752 Type: *jizomari*
 Beach scenery with pines, sails,
 two huts, a rake and a broom
 (Takasago motif)
 Technique: *tsukibori*, *kiribori*
 46,8 × 27,3 cm (22 cm)
 Inv. No. A 3.693

- 753 Type: *jizomari*
 Scenery with a house, bamboo, pine,
 maple etc.
 Technique: *tsukibori*; *shabari*
 Modern *katagami* of late 60ties
 54,2 × 97,6 cm (34,2 cm)
 Inv. No. A 10.114

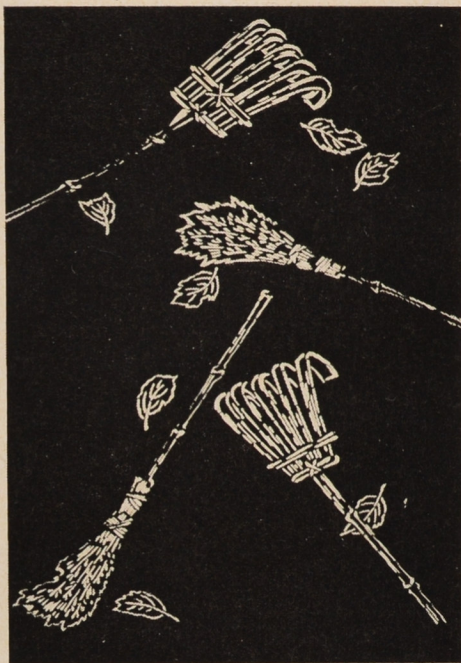


- 754 Type: *jizomari*
 Scenery with *sasa*, cliff, pine, maple,
 brook etc.
 Technique: *tsukibori*; *shabari*
 Modern *katagami* of late 60ties
 53,8 × 97,1 cm (33,7 cm)
 Inv. No. A 10.116



10. Inanimate Objects

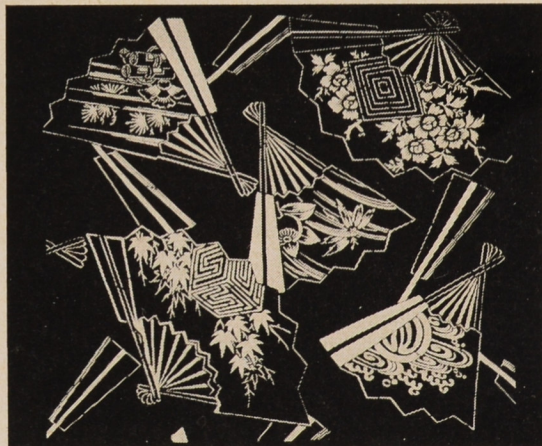
755 Type: *jizomari*
Rake, broom and leaves
(Takasago motif)
Technique: *tsukibori*
40,3 X 54,6 cm (34,3 cm)
Inv. No. A 10.625



756 Type: *jizomari*
Fans
Technique: *tsukibori*; *shabari*
Modern *katagami* from 50—60ties
37,2 X 45,1 cm (21,3 cm)
Inv. No. A 10.774

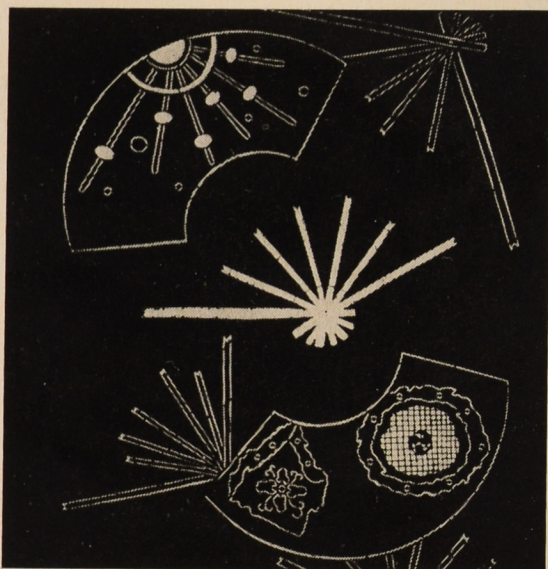


757 Type: *jizomari*
Fans with natural and geometric motifs
Technique: *tsukibori*
41,1 X 42 cm (32 cm)
Inv. No. A 10.624





758 Type: *jizomari*
Fans with maple leaves and waves,
crane and clover mon, etc.
Technique: *tsukibori*; *itoire*
30,1 × 42 cm [20,4 cm]
Inv. No. A 10.496



759 Type: *jizomari*
Fan papers and fan frames
Technique: *tsukibori*; *itoire*, *itokake*
42 × 60 cm [34,2 cm]
Inv. No. 3.933



760 Type: *jizomari*
tanzaku papers with floral motifs
Technique: *kiribori*, *tsukibori*
32,2 × 40,8 cm [21,3 cm]
Inv. No. A 10.447

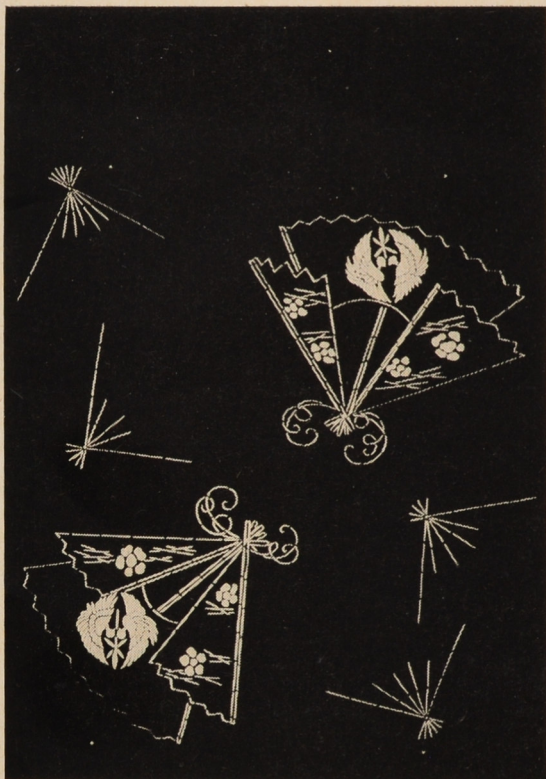
761 Type: *jizomari*

Fan-butterflies with crane *mon*, plum
and pine needle, bamboo frames
(*shōchikubai*)

Technique: *tsukibori*

42 × 51,2 cm (31,3 cm)

Inv. No. A 10.616



11. Inanimate Objects Combined
with Motifs Taken
From Nature

762 Type: *jizomari*

Wistaria tendrils and fans the frame
of which is composed of cranes

Technique: *tsukibori*

30,8 × 40,5 cm (21,5 cm)

Inv. No. A 10.052



762 Type: *jizomari*

Water stream, Chinese bell flowers
and baskets (?) with grass motif

Technique: *tsukibori*

30,5 × 41,7 cm (20,2 cm)

Inv. No. A 10.373





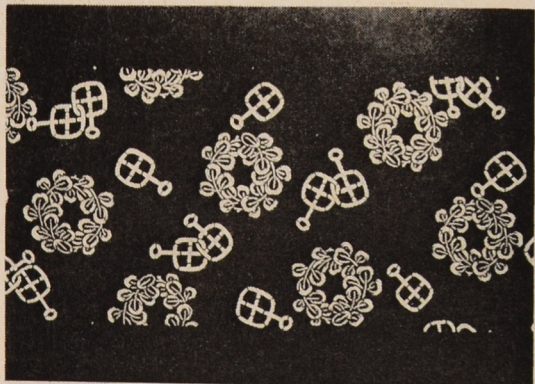
764 Type: *jizomari*
Pines and *noshi* bundles
Technique: *tsukibori*
25 × 41 cm (17,1 cm)
Inv. No. A 10.423



765 Type: *jizomari*
Cherry twigs and fans
Technique: *tsukibori*
30,7 × 41,7 cm (22 cm)
Inv. No. A 10.379

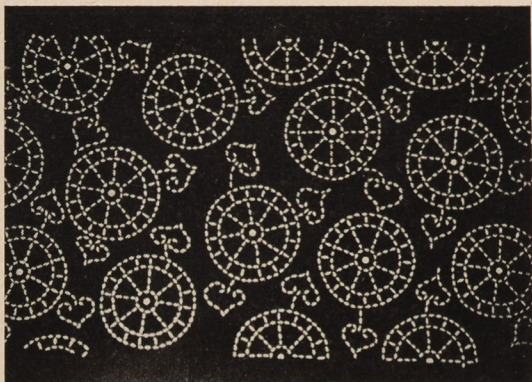


766 Type: *jizomari*
Chrysanthemums and fans
Technique: *tsukibori*, *kiribori*
32,5 × 41,8 cm (19,7 cm)
Inv. No. A 10.320

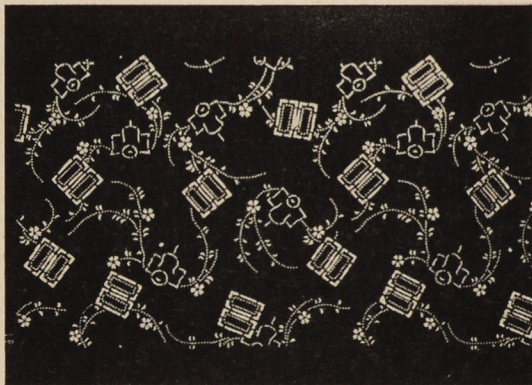


767 Type: *jizomari*
hagi wreaths and horse bits
Technique: *tsukibori*
25,5 × 41 cm (13,8 cm)
Inv. No. A 10.277

- 768 Type: *jizomari*
aoi leaves and wheels
 [Aoi festival symbols]
 Technique: *tsukibori*, *dōgubori*
 27,7 × 41,8 cm (17,8 cm)
 Inv. No. A 10.264



- 769 Type: *jizomari*
 Yajirōbei doll with *sakura* twigs
 instead hands, *ajiro* weave elements
 Technique: *kiribori*, *dōgubori*, *tsukibori*
 25 × 41 cm (16,5 cm)
 Inv. No. A 10.266



- 770 Type: *jizomari*
koto (cither) and chrysanthemums
 Technique: *tsukibori*
 31,2 × 40,7 cm (21,5 cm)
 Inv. No. A 10.053

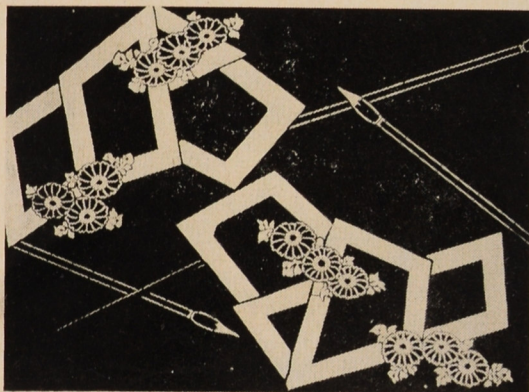


- 771 Type: *jizomari*
 Bamboo and fan papers
 Technique: *tsukibori*
 42,8 × 51,5 cm (34,8 cm)
 Inv. No. A 10.773

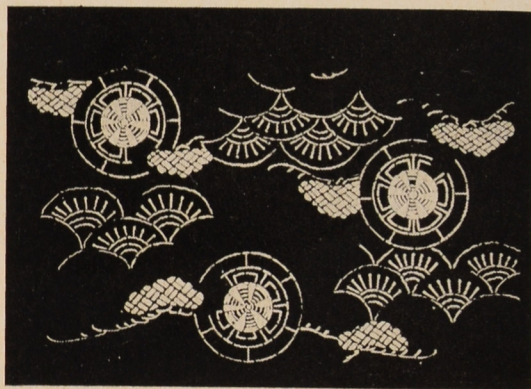




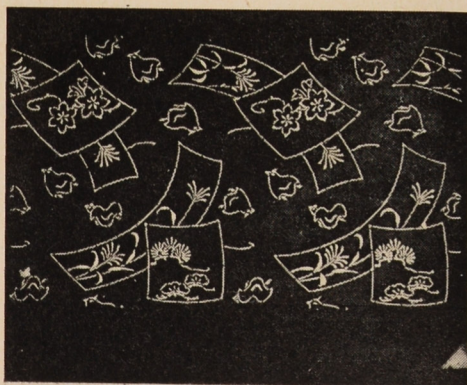
772 Type: *jizomari*
 Japanese and European cups
 and *sakura* twigs
 Technique: *tsukibori*; *itoire*
 24,8 × 41 cm (14,7 cm)
 Inv. No. A 10.159



773 Type: *jizomari*
 Folded letters, writing brushes
 and chrysanthemums
 Technique: *tsukibori*; *itokake*
 31,2 × 41,4 cm (21 cm)
 Inv. No. A 10.102



774 Type: *jizomari*
 Wheels in waves and pine with
ajiro diaper
 Technique: *tsukibori*
 30,3 × 40,6 cm (20 cm)
 Inv. No. A 10.455



775 Type: *jizomari*
 Plovers and papers with clematis,
susuki grass and pine
 Technique: *tsukibori*
 30 × 40,9 cm (19,9 cm)
 Inv. No. A 10.438

776 Type: *jizomari*

Bamboo and papers with *shōchikubai*,
chrysanthemums and *hagi*

Technique: *tsukibori*; *itoire*

42 × 64 cm (34 cm)

Inv. No. 3.945



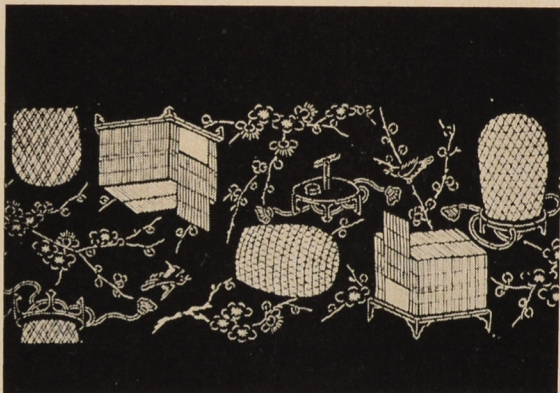
777 Type: *jizomari*

Bird cages, plum twigs and little birds

Technique: *tsukibori*

25,5 × 41,5 cm (12,6 cm)

Inv. No. A 10.048



778 Type: *jizomari*

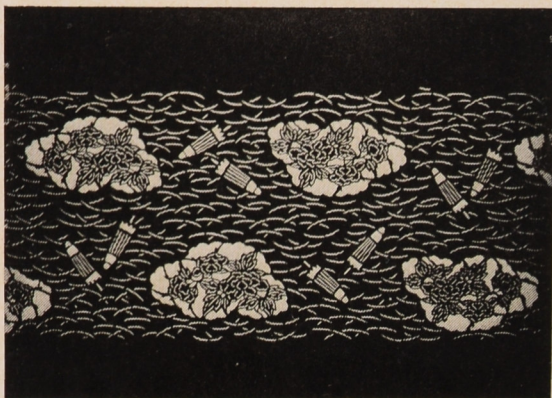
Old woven screens, *susuki* grass,
ominaeshi (*Patrinia scabiosaefolia*)
and Chinese bell flower

Technique: *tsukibori*

41,4 × 57,3 cm (33,2 cm)

Inv. No. A 10.750



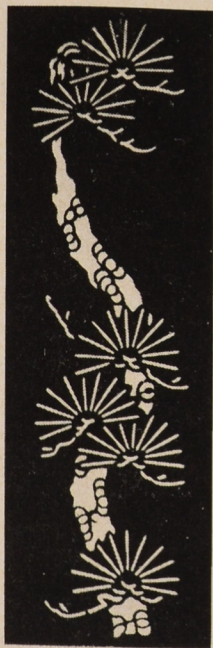


779 Type: *jizomari*
 Closed umbrellas, pine needles
 and peonies
 Technique: *tsukibori*
 25,6 X 42,2 cm (12,3 cm)
 Inv. No. A 10.226



780 Type: *jizomari*
 Fan papers and *sakura* flowers in waves
 Technique: *tsukibori*, *kiribori*
 30,2 X 41 cm (20,2 cm)
 Inv. No. A 10.431

781 Type: *jizomari*
 Pine
 Technique: *tsukibori*
 6,2 X 21,1 cm



782 Type: *jizomari*
 Pine
 Technique: *tsukibori*
 8,6 X 11,9 cm
 Inv. No. A 11.198



12. Small Stencils



783 Type: *jizomari*
Bamboo
Technique: *tsukibori*
8,5 × 12,3 cm
Inv. No. A 11.200



784 Type: *jizomari*
Chrysanthemum
8,6 × 12 cm
Inv. No. 16.438

785 Type: *jizomari*
Drooping *sakura*
and butterfly
Technique: *tsukibori*,
dōgubori
10,2 × 26 cm
Inv. No. 35.492



786 Type: *jizomari*
Water stream, maple
leaves, *sakura* flowers,
swallows
Technique: *tsukibori*
9 × 24,7 cm
Inv. No. 35.493



787 Type: *jizomari*
Chrysanthemum
Technique: *tsukibori*
9,6 × 24 cm
Inv. No. 35.494





788 Type: *jizomari*
Chrysanthemum
and butterfly
Technique: *tsukibori*
9,5 × 24 cm
Inv. No. 35.496



789 Type: *jizomari*
Maple twig
Technique: *tsukibori*
9,3 × 24,8 cm
Inv. No. 35.497



790 Type: *jizomari*
Maple twigs
and trailing haze
Technique: *tsukibori*
9,3 × 21,6 cm
Inv. No. 35.505

791 Type: *jizomari*
Grass and butterflies
Technique: *tsukibori*
9,3 × 21,8 cm
Inv. No. 35.507



792 Type: *jizomari*
Gourd
Technique: *tsukibori*
9,3 × 22,7 cm
Inv. No. 35.508



793 Type: *jizomari*
hagi and butterfly
Technique: *tsukibori*,
kiribori
9,3 × 25,5 cm
Inv. No. 35.509





794 Type: *jizomari*
Willow and swallows
Technique: *tsukibori*
Damaged
9 × 23,5 cm
Inv. No. 35.512



795 Type: *jizomari*
sakura twig
Technique: *tsukibori*
9,5 × 21,8 cm
Inv. No. 35.513



796 Type: *jizomari*
sakura twig
Technique: *tsukibori*
9,5 × 22,8 cm
Inv. No. 35.514

797 Type: *jizomari*
Bamboo fences,
plum trees
and *origami* cranes
Technique: *tsukibori*
9,3 × 24,5 cm
Inv. No. 35.495



798 Type: *jizomari*
Kite and maple leaves
Technique: *tsukibori*
9,3 × 23,5 cm
Inv. No. 35.501



799 Type: *jizomari*
Fan and chrysanthemum
Technique: *tsukibori*
9,3 × 23,6 cm
Inv. No. 35.515





800 Type: *jizomari*
Chrysanthemum and *seigaiha* waves
Technique: *tsukibori*
9,3 × 22 cm
Inv. No. 35.510



801 Type: *jizomari*
sakura tree and conventionalized
snow flake
Technique: *tsukibori*
9 × 23,5 cm
Inv. No. 35.511

802 Type: *jizomari*
Slow flakes and *shōchikubai* (bamboo,
pine crown and pine needles and
ume blossoms)
Technique: *tsukibori*
9,2 × 22,5 cm
Inv. No. 35.506



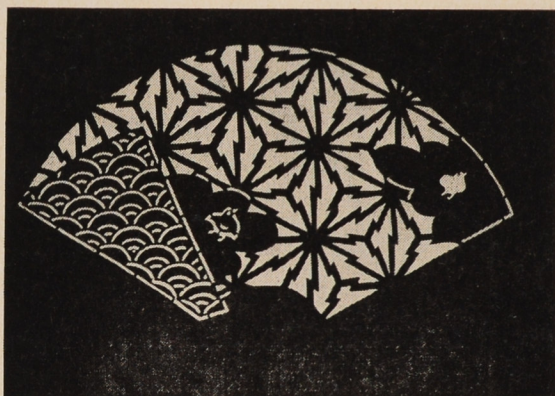
803 Type: *jizomari*
Bamboo blinds and *sakura* twigs
Technique: *tsukibori*, *hikibori*, *kiribori*
13,5 × 18,6 cm
Inv. No. 35.503



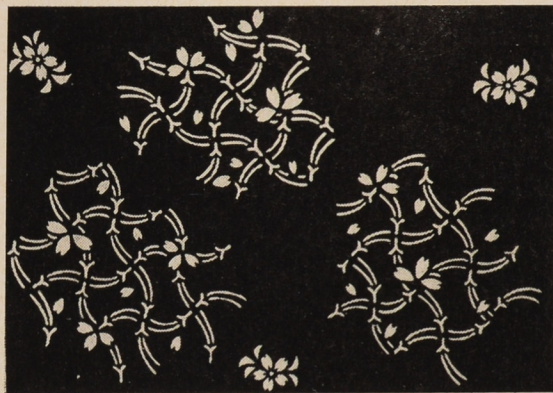
- 804 Type: *jizomari*
 Fan and *sakura* petals
 Technique: *tsukibori*, *kiribori*
 14,1 × 20 cm
 Inv. No. 35.498



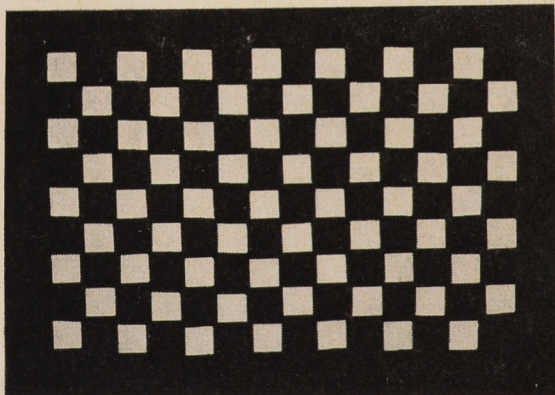
- 805 Type: *jizomari*
 Fan paper with plovers and *seigaiha*
 waves and hemp-leaf (*asanoha*) diaper
 in zigzag lines
 Technique: *tsukibori*
 14,3 × 21 cm
 Inv. No. 35.504



- 806 Type: *jizomari*
tatewaku net composed of pine needles
 and *sakura* flowers
 Technique: *tsukibori*, *dōgubori*
 13,8 × 19,5 cm
 Inv. No. 35.500

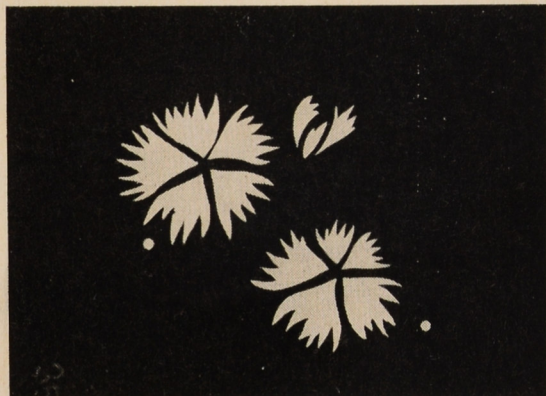


- 807 Type: *jizomari*
 Chequer design (*Ichimatsu mon*)
 Technique: *tsukibori*
 10 × 13,5 cm
 Inv. No. 35.485



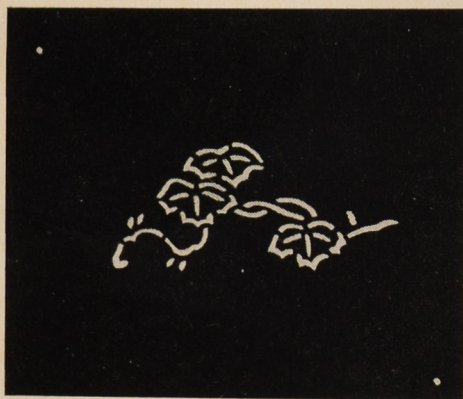


808 Type: *jizomari*
Stalk of *nadeshiko* flower
[to be combined with *katagami* No. 809]
Technique: *tsukibori*
9,1 X 9 cm
Inv. No. A 11.199

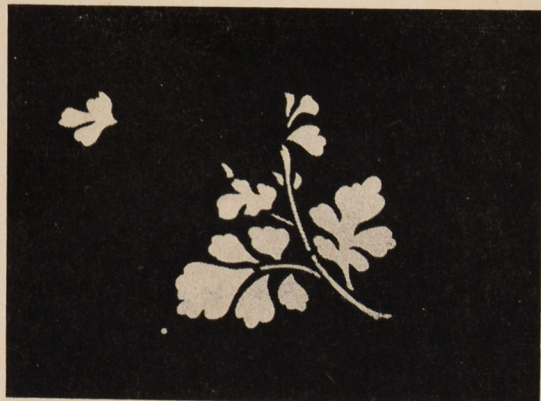


809a Type: *jizomari*
nadeshiko flowers
(to be combined with *katagami* No. 808)
Technique: *tsukibori*
9,1 X 9 cm
Inv. No. A 11.199

809b The same pattern as 809a
9 X 9 cm
Inv. No. 35. 489

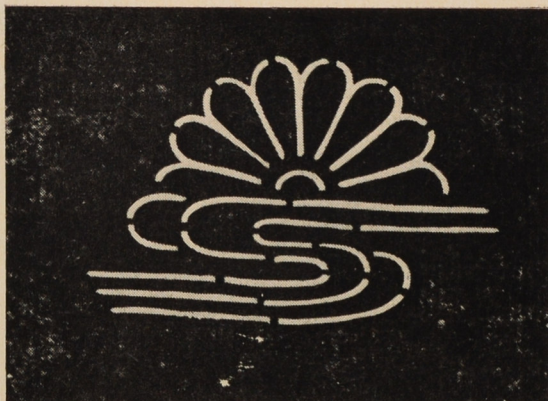


810 Type: *jizomari*
Ivy
Technique: *tsukibori*
7,5 X 9 cm
Inv. No. 35.484

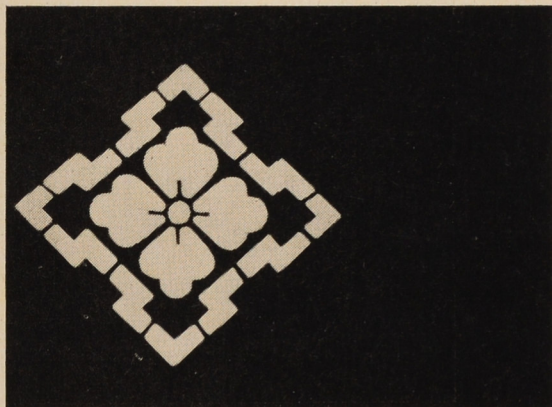


811 Type: *jizomari*
Chrysanthemum stalk
Technique: *tsukibori*
9 X 9 cm
Inv. No. A 11.201

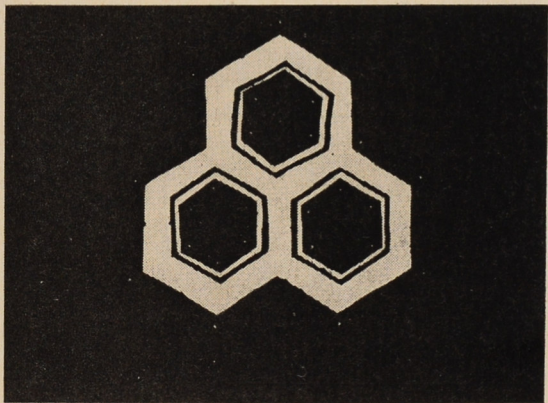
812 Type: *jizomari*
Chrysanthemum flower
in water stream (*mon*)
Technique: *tsukibori*
6,5 × 7,5 cm
Inv. No. 35.486



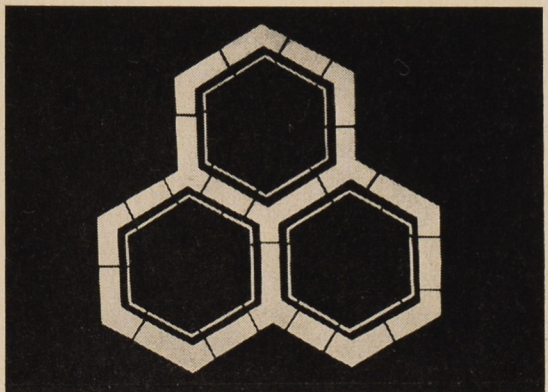
813 Type: *jizomari*
karahana mon
Technique: *tsukibori*
8 × 8,4 cm
Inv. No. 35.487



814 Type: *jizomari*
kikkō design
Technique: *tsukibori*; *itokake*
10 × 9,7 cm
Inv. No. 35.488

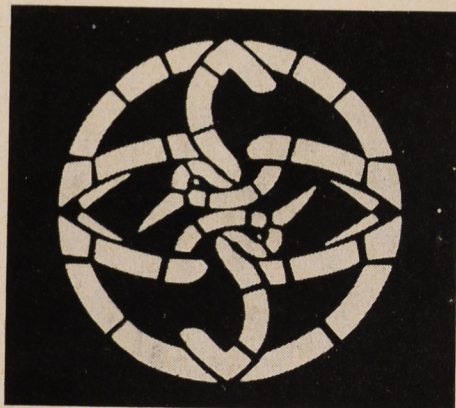


815 Type: *jizomari*
kikkō design
Technique: *tsukibori*
12,8 × 13,5 cm
Inv. No. 35.499

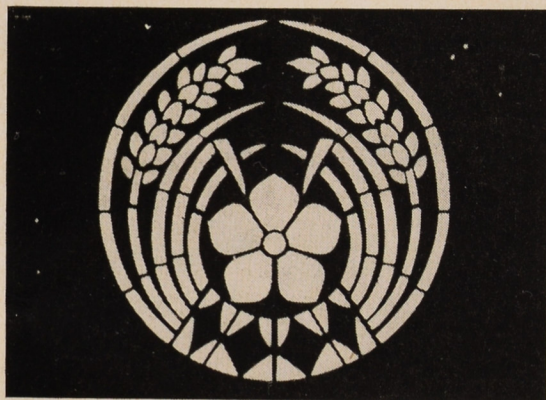




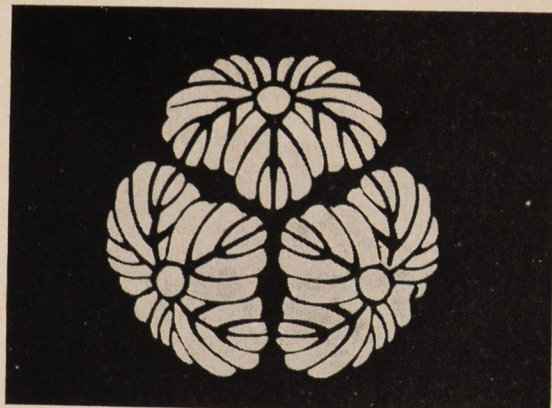
816 Type: *jizomari*
Ivy leaf (*mon*)
Technique: *tsukibori*
7,5 × 7,5 cm
Inv. No. 35.490



817 Type: *jizomari*
mon composed of two cranes
Technique: *tsukibori*
6,5 × 7 cm
Inv. No. 35.483



818 Type: *jizomari*
Rice and *kikkyō* flower (*mon*)
Technique: *tsukibori*
7 × 8 cm
Inv. No. 35.482



819 Type: *jizomari*
Three ivy leaves (*mon*)
Technique: *tsukibori*
8 × 7,8 cm
Inv. No. 35.481